

- Well location
- Drill Deeper
- Redrill
- Abandonment

5-7-74
~~DEBON CORPORATION~~

SURVEY - W.S. GRAVELY - DEC. 22, 1961 - NOTE BOOK No. 88 PAGE 40

Company COMMONWEALTH GAS CORPORATION
 Address P.O. Box 1433 CHARLESTON, W.VA.
 Farm JAY P. SMITH
 Tract Acres 40 Lease No. 1983
 Well (Form) No. 1 Serial No. 688
 Elevation (Spirit Level) 692.74'
 Quadrangle LOUISA N.E.
 County WAYNE District BUTLER
 Engineer E.H. Hall
 Engineer's Registration No. 2602
 File No. _____ Drawing No. _____
 Date Dec. 22, 1961 Scale 1" = 400'

STATE OF WEST VIRGINIA
 DEPARTMENT OF MINES
 OIL AND GAS DIVISION
 CHARLESTON

WELL LOCATION MAP

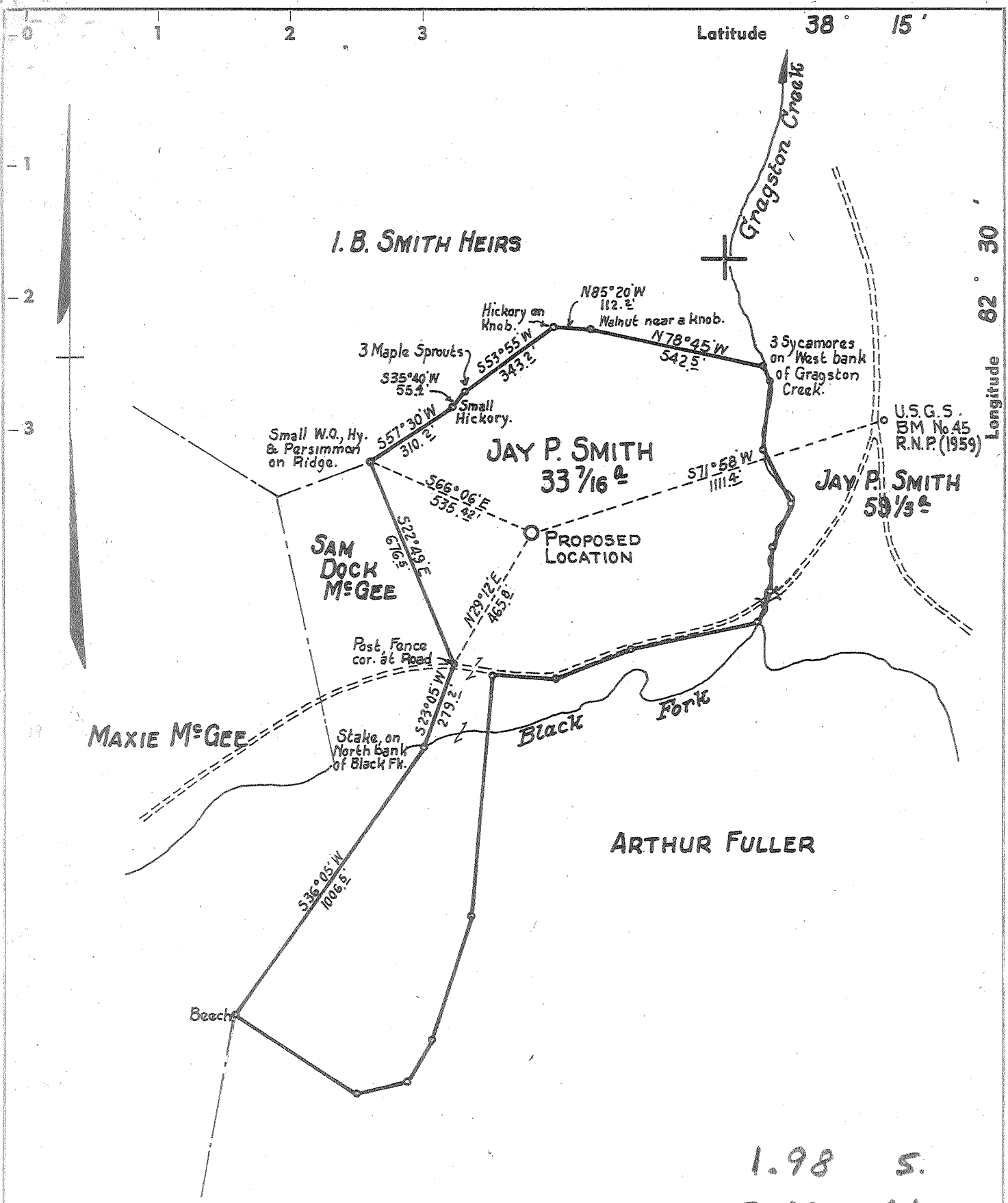
FILE NO. WAY-1393-P

+ Denotes location of well on United States Topographic Maps, scale 1 to 62,500, latitude and longitude lines being represented by border lines as shown.

— Denotes one inch spaces on border line of original tracing.

Deep Well

JUN 5 1974



1.98 S.
2.12 W.
1-C (K-1)

- New Location .
- Drill Deeper
- Redrill
- Abandonment

SURVEY - W.S. GRAVELY - DEC. 22, 1961 - NOTE BOOK No. 88 PAGE 40

Company	COMMONWEALTH GAS CORPORATION		
Address	P.O. Box 1433 CHARLESTON, W. VA.		
Farm	JAY P. SMITH		
Tract	Acres	40	Lease No. 1983
Well (Farm) No.	1	Serial No.	688
Elevation (Spirit Level)	692.74'		
Quadrangle	LOUISA-N.E.		
County	WAYNE	District	BUTLER
Engineer	G.H. Hall		
Engineer's Registration No.	2602		
File No.	Drawing No.		
Date	DEC. 22, 1961	Scale	1" = 400'

STATE OF WEST VIRGINIA
DEPARTMENT OF MINES
OIL AND GAS DIVISION
CHARLESTON

WELL LOCATION MAP

FILE NO. WAY-1393

+ Denotes location of well on United States Topographic Maps, scale 1 to 62,500, latitude and longitude lines being represented by border lines as shown.

— Denotes one inch spaces on border line of original tracing.

No Samples

6-6-229

Deep Well



STATE OF WEST VIRGINIA
DEPARTMENT OF MINES
OIL AND GAS DIVISION 4/

Quadrangle Louisa N. E.

WELL RECORD

Permit No. Way 1393

Oil or Gas Well Gas
(KIND)

Company COMMONWEALTH GAS CORPORATION
Address P. O. Box 1433, Charleston, W. Va.
Farm Jay P. Smith Acres 40
Location (waters) Black Fork of Gragston Creek
Well No. 688 Elev. 692.74'
District Butler County Wayne
The surface of tract is owned in fee by Jay P. Smith
Route #2 Address Prichard, W. Va.
Mineral rights are owned by Same
Address _____

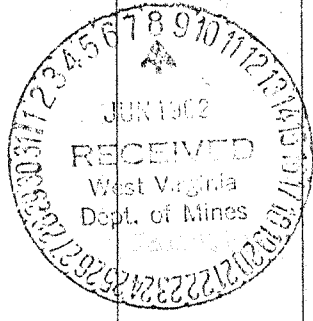
Casing and Tubing	Used in Drilling	Left in Well	Packers
Size			Kind of Packer
16			Comb. W & A
13	20	20	Size of
10	393'8"	393'8"	Depth set <u>3449'</u>
8 1/4	1947'1"		Tubing cage set at
6 3/4	3242'8"	3242'8"	Perf. top <u>3617'</u>
5 3/16			Perf. bottom <u>3640'</u>
3			Perf. top _____
2	3657'8"	3657'8"	Perf. bottom _____
*Liners Used 5"	107'3"	107'3"	Perf. top _____
			Perf. bottom _____
Top of Liner at <u>3586'</u>			

Drilling commenced January 8, 1962
Drilling completed May 14, 1962
Date Shot 5-11 & 10-62 From 3565 To 3635
With 1st shot 600# gel. 2nd shot 5800# gel.
Open Flow /10ths Water in _____ Inch
/10ths Merc. in _____ Inch
Volume 139,000 Cu. Ft.
Rock Pressure 463 lbs. 65 hrs.
Oil _____ bbls., 1st 24 hrs.
WELL ACIDIZED _____
WELL FRACTURED _____

CASING CEMENTED 7" SIZE No. Ft. 4-10-62 Date
15 sacks behind 7" casing
COAL WAS ENCOUNTERED AT _____ FEET _____ INCHES
_____ FEET _____ INCHES FEET _____ INCHES
_____ FEET _____ INCHES FEET _____ INCHES

RESULT AFTER TREATMENT _____
ROCK PRESSURE AFTER TREATMENT _____
Fresh Water 95' 110' 195' Feet Salt Water 860' Feet

Formation	Color	Hard or Soft	Top	Bottom	Oil, Gas or Water	Depth	Remarks
Surface			0	10			
Yellow Clay			10	19			
Sand Rock			19	75			
Blue Mud			75	120	Water	95	1 bailer per hr
Sand			120	130			
Slate			130	165	Water	110	2 bailers per hr
Sand			165	210	Water	195	3 bailers per hr
Slate			210	240			
Sand			240	253			
Slate			253	355			
Sand			355	395			
Slate			395	480			
Broken Sand			480	500			
Slate			500	545			
Sand			545	595			
Blue Slate			595	673			
Sand			673	697			
Slate			697	720			
Broken Sand			720	765			
Slate			765	845			
SALT SAND			845	935	Water	860	Hole full
Slate			935	1005			
SALT SAND			1005	1025			
Slate & Shells			1025	1040			
Sand			1040	1070			
Slate			1070	1105			
LITTLE LIME			1105	1116			
BIG LIME			1116	1275			
KWONER SAND			1275	1288	Gas	1280-1287	Smell



Formation	Color	Hard or Soft	Top 4/1	Bottom	Oil, Gas or Water	Depth Found	Remarks
INJUN SAND			1288	1406			
Blue Slate			1406	1428			
Sand			1428	1492			
Shell			1492	1497		1494	HalliburtonSLM
Slate Shells			1497-	1892			
Brown Shale			1892	1915		1915	HallibrutonSLM
BEREA SAND			1915	1920	Oil	1916-1920	Show
Shell			1920	1925			
Slate			1925	1933			
Shells			1933	1938			
White Slate			1938	1960			
Gitty Shells			1960	1985	Oil	1970-1977	Show
Slate			1985	2000			
BROWN SHALE			2000	2135			
Slate			2135	2280			
BROWN SHALE			2280	2380			
White Slate			2380	2420			
BROWN SHALE			2420	2700			
White Slate			2700	2885			
BROWN SHALE			2885	2924		2934	S.L.M.
CORNIFEROUS LIME			2924	3625	Black Water	3085 - 3094	1/3 bailer per hour
BIG SIX SAND			3625	3650	Black water	3104-3117	1/2 bailer "hr.
					Black water	3368-3373	1/3 bailer ea. 3 hrs.
Slate			3650	3653	Gas	3605-3613	14/10 W 1" = 39 m
					Gas	3613-3617	14/10 W 1" 24 hr. gauge 12/10 W 1"
			TOTAL DEPTH	3653			
							33 hr. gauge - 12/10 W 1" 36 M cu. ft. Filled with rock from total depth 3653 to 3635 and shot from 3635 to 3585'. (See shot record on reverse side of sheet.)

2924
693

2231

Date June 8, 1962

APPROVED COMMONWEALTH GAS CORPORATION, Owner

By [Signature] Land & Eng. Dept.
(Title)