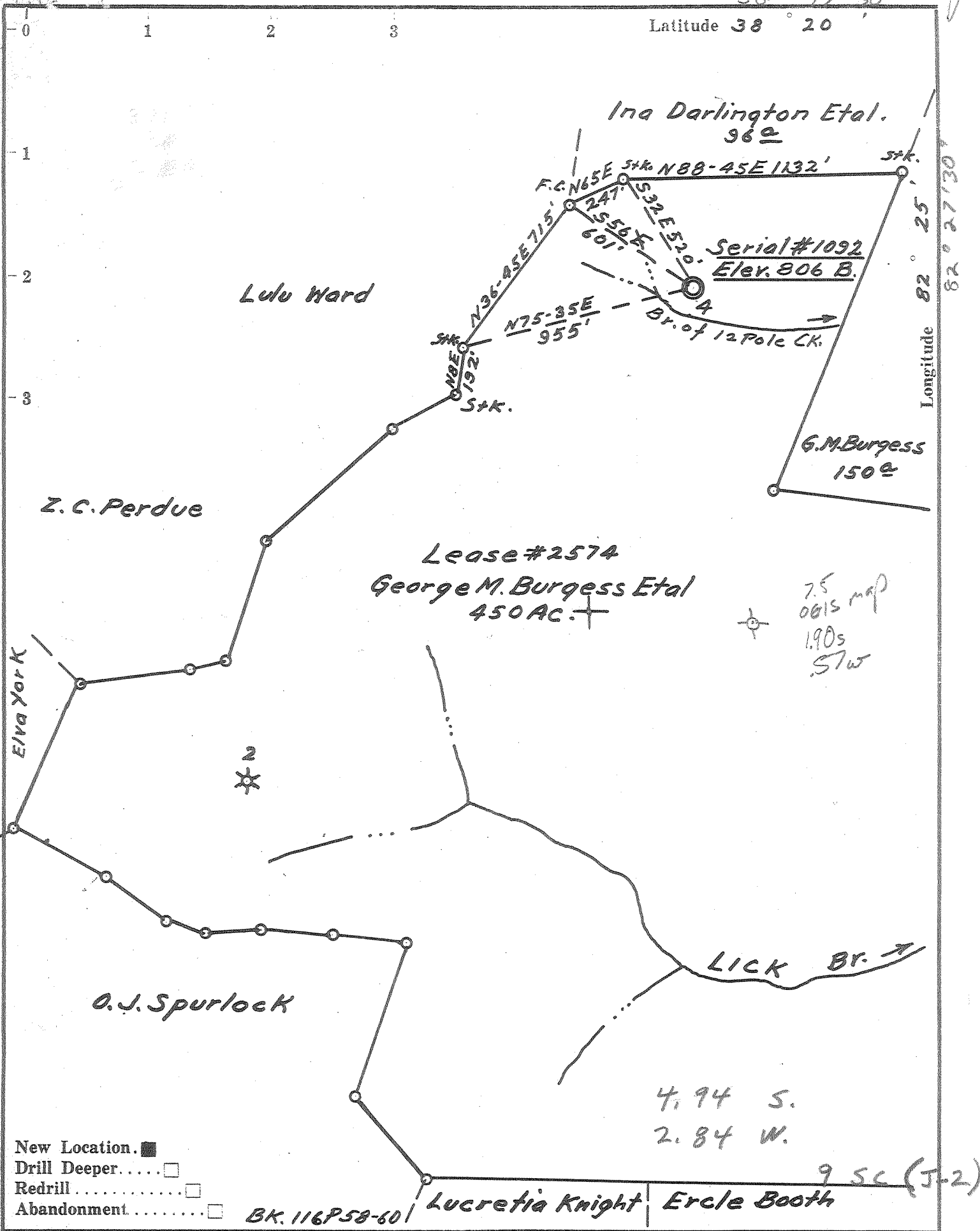


38° 17' 30"

Latitude 38° 20'

Longitude 82° 27' 30"



7.5
0615 map
1905
SW

4.94 S.
2.84 W.

- New Location.
- Drill Deeper.
- Redrill
- Abandonment

BK. 116P58-60

95C (J-2)

Company Owens, Libbey-Owens Gas Dept.
 Address Box 4168 Charleston 4 W. Va.
 Farm George M. Burgess Etal
 Tract _____ Acres 450 Lease No. 2574
 Well (Farm) No. 4 Serial No. 1092
 Elevation (Spirit Level) 806 Bar. 836'
 Quadrangle Guyandot SW
 County Wayne District Union
 Engineer T.S. Flournoy
 Engineer's Registration No. 269
 File No. _____ Drawing No. _____
 Date Jan. 8, 1960 Scale 1" = 500'

STATE OF WEST VIRGINIA
 DEPARTMENT OF MINES
 OIL AND GAS DIVISION
 CHARLESTON

WELL LOCATION MAP
 FILE NO. WAY-1282

+ Denotes location of well on United States Topographic Maps, scale 1 to 62,500, latitude and longitude lines being represented by border lines as shown.
 — Denotes one inch spaces on border line of original tracing.

No Samples

6-6 229

Deep Well



STATE OF WEST VIRGINIA
DEPARTMENT OF MINES
OIL AND GAS DIVISION 17

Quadrangle Guyandot

WELL RECORD

Permit No. Way-1282

Oil or Gas Well GAS
(KIND)

Company OWENS, LIBBEY-OWENS GAS DEPARTMENT
Address P. O. Box 4168, Charleston 4, W. Va.
Farm G. M. Burgess Acres 450
Location (waters) _____
Well No. 4 (Serial No. 1092) Elev. 806. 836
District Union County Wayne
The surface of tract is owned in fee by _____
Address _____
Mineral rights are owned by G. M. Burgess et al
Address Wayne, W. Va.

Drilling commenced 7-1-60
Drilling completed 10-7-60
Date Shot 10-12-60 From 3970 To 3996
10-17-60 From 3970 To 3998
With (Lat Shot) 175% Gelatin
(2nd Shot) 100% Trojan Powder
Open Flow _____ /10ths Water In _____ Inch
_____ /10ths Merc. in _____ Inch
Volume Big Six Sand 323 M Cu. Ft.
Rock Pressure 990 lbs. 68 hrs.
Oil _____ bbls., 1st 24 hrs.
Fresh water 530 feet
Salt water 1145 feet

Casing and Tubing	Used in Drilling	Left in Well	Packers
Size			
16" 10-3/4	361'7"	361'7"	Parmaco Bottom Hole
13" 8-5/8	1402'	Pulled	Kind of Packer
10" 8-5/8	1415'9"	Pulled	5 1/2 x 7 x 16
8 1/2" 7	2260'3"	Pulled	3769 - 3772
6 3/4" 7	2279'	2279'	Size of
5 3/8/10" 5 1/2	3757'11"	Pulled	Larkin Upside Down
3" 5 1/2	3770'1"	3770'1"	3 1/2 x 5 1/2 x 16
2" 3 1/2	---	3967'2"	Depth set
Liners Used			3871 - 3877
			Perf. top 3955
			Perf. bottom 3967
			Perf. top
			Perf. bottom

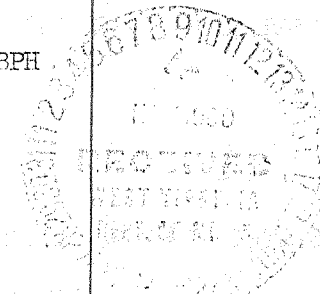
CASING CEMENTED _____ SIZE _____ No. Ft. _____ Date _____
COAL WAS ENCOUNTERED AT 283 FEET 36 INCHES
407 FEET 36 INCHES FEET INCHES
FEET INCHES FEET INCHES

Formation	Color	Hard or Soft	Top	Bottom	Oil, Gas or Water	Depth Found	Remarks
Surface	Blue	Soft	0	15			
Slate	White	Soft	15	25			
Sand	White	Soft	25	52			
Sand	Blue	Soft	52	65			
Red Rock	Red	Soft	65	80			
Slate	White	Soft	80	145			
Sand	White	Soft	145	160			
Slate	Blue	Soft	160	197			
Sand, Bro.	White	Soft	197	225			
Red Rock	Red	Soft	225	230			
Slate	White	Soft	230	271			
Slate	Blue	Soft	271	283			
Coal	Blue	Soft	283	286			
Slate	Blue	Soft	286	321			
Sand	White	Soft	321	330			
Slate	Black	Soft	330	407			
Coal	Black	Soft	407	410			
Slate	Grey	Soft	410	450			
Slate	Blue	Soft	450	485			
Sand	White	Soft	485	512			
Slate	White	Soft	512	523			
Slate	Blue	Soft	523	601			
Salt Sand	White	Soft	601	642			
Slate	Black	Soft	642	668			
Salt Sand	White	Soft	668	892			
Salt Sand	Blue	Soft	892	959			
Salt Sand	White	Soft	959	1018			
Salt Sand	Blue	Soft	1018	1079			
Salt Sand	White	Soft	1079	1140			
Maxton Sand	Blue	Soft	1140	1158			
Maxton Sand	White	Hard	1158	1258			
Lime Shell	Blue	Hard	1258	1294			
Shells	Blue	Hard	1294	1350			
Little Lime	Blue	Med.	1350	1362			
Little Lime	Blue	Hard	1362	1371			

7-7-60
Installed 10-3/4" casing at 361'

Water at 530', 1 BPH

Water 1145', hole full



Formation	Color	Hard or Soft	Top	Bottom	Oil, Gas or Water	Depth Found	Remarks
Slate	Blue	Soft	1371	1376			
Big Lime	White	Hard	1376	1417	SIM 1376 = Sand IM 1376		
					7-25-60		Installed 8-5/8" csg. at 1403' on shoe
							Testing at 1417' showed csg. leaking
					7-30-60		
Big Lime	White	Hard	1415	1553			
					8-1-60		Pulled 8-5/8" casing
							Re-installed 8-5/8" casing at 1415'9" on shoe
Injun Sand	Grey	Med.	1553	1591			
Injun Sand	Grey	Soft	1591	1658			
Slate	White	Soft	1658	1695			
Stray Sand	Grey	Soft	1695	1733			
Slate	White	Soft	1733	1734			
					8-11&12-60		Water test 1734', 15 1/2 Bbls. in 24 Hrs.
Shells	Grey	Med.	1734	1764			
Slate	Grey	Soft	1764	2191			
Br. Shale	Brown	Soft	2191	2214			
Berea	Grey	Med.- Hard	2214	2237			
Berea	Grey	Hard	2237	2248			
Slate	White	Soft	2248	2263			
Shells	Grey	Hard	2263	2275			
					8-22-60		Installed 7" csg. at 2264' on shoe and 2 casing centralizers
Slate	White	Soft	2275	2279			
					8-25-60		At 2278', 5 gal. water in 24 Hrs.
							Pulled 7" casing
Shells	Blue	Hard	2279	2294			
					8-27-60		Re-ran 7" casing at 2281' with 2 centralizers set at 2272'6" & 2233'1"
Shells	Grey	Hard	2294	2305			
Slate	White	Soft	2305	2311			
Sl & Shls	Grey	Soft	2311	2347			
Br. Shale	Brown	Soft	2347	2433			
Slate	White	Soft	2433	2453			
Shells	Blue	Hard	2453	2468			
Slate	White	Soft	2468	2564			
Br. Shale	Brown	Soft	2564	2723			
Slate	White	Soft	2723	2750			
Br. Shale	Brown	Soft	2750	3072	SIM 2802 = Sand IM 2800		
					Gas 2812'		387 cu.ft.
					Gas 2938'		612 cu.ft.
					Test 3039'		520 cu.ft.
					Gas 3051'		587 cu.ft.
Slate	White	Soft	3072	3271	Test 3269'		520 cu.ft.
Br. Shale	Brown	Soft	3271	3301	Gas 3281'		785 cu.ft.
Corn. Lime	White	Hard	3301	3770	Test 3325'		612 cu.ft.
					Gas 3332'		648 cu.ft.
					Black water at 3470'		
					Test 3580'		574 cu.ft.
					Gas 3604'		714 cu.ft.
					9-23-60		
							Installed 5 1/2" casing at 3762' with Parmaco Bottom Hole Packer and 2 centralizers at 3749' & 3713'2"
					SIM 3770 = Sand IM 3770		
					9-26-60		
							Pulled 5 1/2" casing
Corn. Lime	White	Hard	3770	3824			
					9-27-60		
							Re-installed 5 1/2" casing at 3772' with Parmaco Bottom Hole Packer set 3769' to 3772'
							Put 55 gal. Kontol & 220 gal. water between 7" and 5 1/2" casings.

3301
807
2494

Date October 31, 19 60

APPROVED OWENS, LIBBEY-OWENS GAS DEPARTMENT, Owner

By A. H. Smith
A. H. Smith, Mgr. (Title) Land, Engrg. & Geol.



STATE OF WEST VIRGINIA
DEPARTMENT OF MINES
OIL AND GAS DIVISION 17 A

Quadrangle Guyandot

Permit No. Way-1282

WELL RECORD
(CONTINUED)

Oil or Gas Well GAS
(KIND)

Company OWENS, LIBREY-OWENS GAS DEPARTMENT
Address P. O. Box 4168, Charleston 4, W. Va.
Farm G. M. Burgess Acres 450
Location (waters) _____
Well No. 4 (Serial No. 1092) Elev. 806. 936'
District Union County Wayne
The surface of tract is owned in fee by _____
Address _____
Mineral rights are owned by _____
Address _____

Casing and Tubing	Used in Drilling	Left in Well	Packers
Size			Kind of Packer
16			
18			Size of
10			
8 3/4			Depth set
6 3/4			
5 3/16			Perf. top
3			Perf. bottom
2			Perf. top
Liners Used			Perf. bottom

Drilling commenced _____
Drilling completed _____
Date Shot _____ From _____ To _____
With _____
Open Flow /10ths Water in _____ Inch
/10ths Merc. in _____ Inch
Volume _____ Cu. Ft.
Rock Pressure _____ lbs. _____ hrs.
Oil _____ bbls., 1st 24 hrs.
Fresh water _____ feet _____ feet
Salt water _____ feet _____ feet

CASING CEMENTED _____ SIZE _____ No. Ft. _____ Date _____
COAL WAS ENCOUNTERED AT _____ FEET _____ INCHES
_____ FEET _____ INCHES FEET _____ INCHES
_____ FEET _____ INCHES FEET _____ INCHES

Formation	Color	Hard or Soft	Top	Bottom	Oil, Gas or Water	Depth Found	Remarks
Corn. Lime	White	Hard	3770	3970	Gas 3977'		112 MCF
Big Six Horizon	White	Hard	3970	3996	Gas 3984 1/2'		117 MCF
					Gas 3989'		150 MCF
(NOTE: Driller's log showed no Big Six Field reported Lime gritty from 3970')							
			Total Depth 3996 1/2		10-8-60		
					Pulled 8" casing		
					10-12-60		
					92 Hr. test, 13 gal. Salt water at 3996'		
					Shot with 175# Gelatin from 3970' to 3996' (2:21 P.M.)		
					Test Before Shot:		120 MCF
					" 15 Min. After Shot:		257 MCF
					" 1 Hr. " " "		226 MCF
					" 68 Hrs. " " "		196 MCF
					SIM 4000 = Sand IM 3996		
					10-17-60		
					Shot well with 1100# Trojan Powder from 3970 to 3998' (3:26 P.M.)		
					Test Before Shot:		191 MCF
					Test 1 Hr. After Tamp Out:		479 MCF
					Test 10 Hrs. " " "		386 MCF
					10-20-60		
					Installed 3 1/2" tubing at 3967' with Larkin Upside Down Packer set from 3871 to 3877'		
					Final Open Flow:		
					Big Six Sand		323 MCF
					Shut-in in 3 1/2" tubing 9:22 P.M. 3 days after shot.		

