

Latitude 38° 15'

Longitude 82° 25'

C.W. Ferguson
142^a

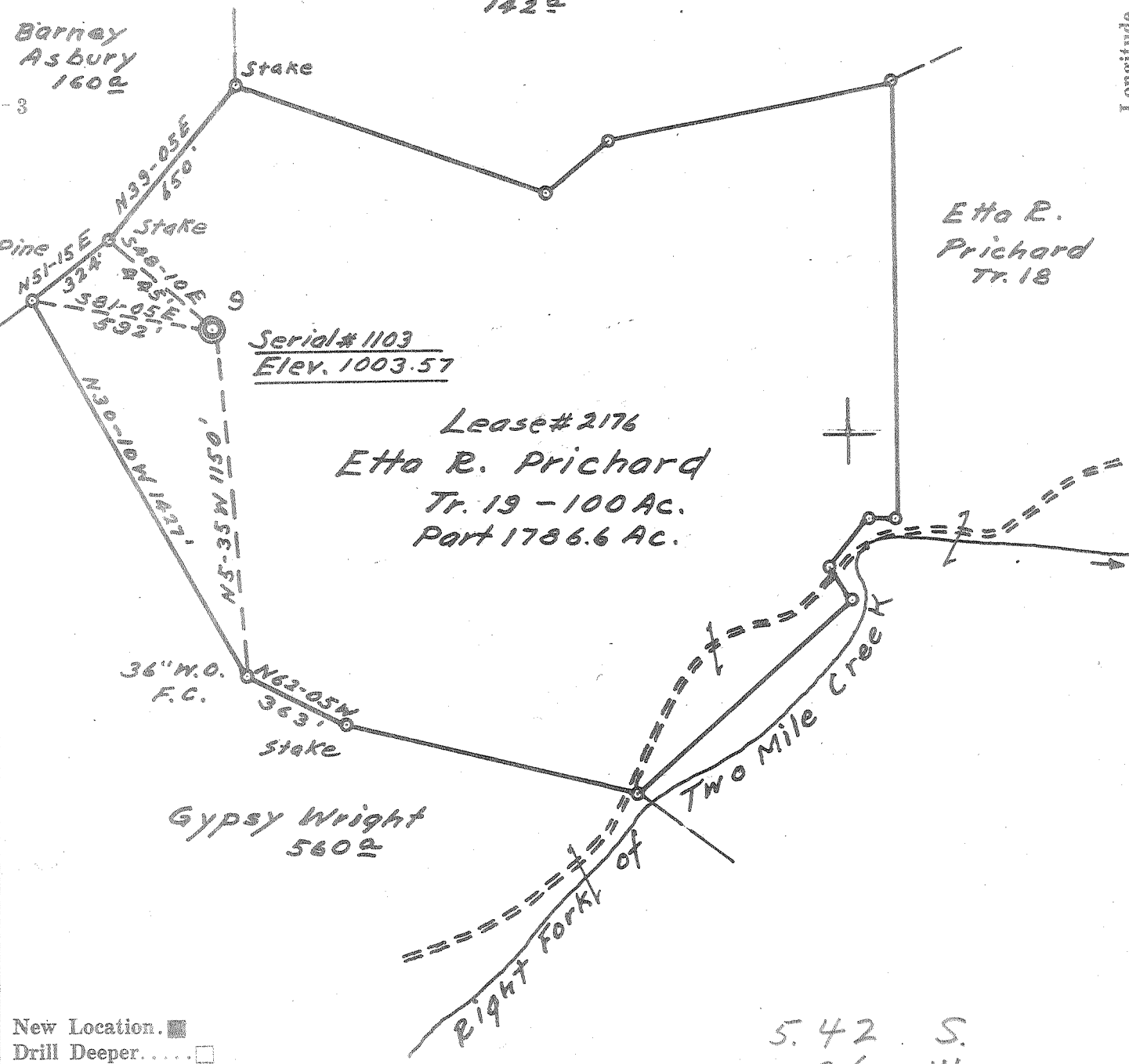
Barney
Asbury
160^a

Etta R.
Prichard
Tr. 18

Serial # 1103
Elev. 1003.57

Lease # 2176
Etta R. Prichard
Tr. 19 - 100 Ac.
Part 1786.6 Ac.

Gypsy Wright
560^a



- New Location.
- Drill Deeper.
- Redrill.
- Abandonment.

5.42 S.
1.96 W.
3 SC (H-2)

Company Owens, Libbey-Owens Gas Dept
 Address Box 4168 Charleston W. Va.
 Farm Etta R. Prichard
 Tract 19 Acres 100 Lease No. 2176
 Well (Farm) No. 9 Serial No. 1103
 Elevation (Spirit Level) 1003.57
 Quadrangle Wayne-NW
 County Wayne District Stonewall
 Engineer T.S. Flournoy
 Engineer's Registration No. 269
 File No. _____ Drawing No. _____
 Date Mar. 28, 1960 Scale 1" = 500 Ft.

STATE OF WEST VIRGINIA
DEPARTMENT OF MINES
OIL AND GAS DIVISION
CHARLESTON

WELL LOCATION MAP
FILE NO. WAY-1276

+ Denotes location of well on United States Topographic Maps, scale 1 to 62,500, latitude and longitude lines being represented by border lines as shown.

— Denotes one inch spaces on border line of original tracing.

No. Sumner 6-6 (353) Deep Well



STATE OF WEST VIRGINIA
DEPARTMENT OF MINES
OIL AND GAS DIVISION 16

Quadrangle Wayne

WELL RECORD

Permit No. Way-1276

Oil or Gas Well GAS
(KIND)

Company OWENS, LIBBEY-OWENS GAS DEPARTMENT
Address P. O. Box 4168, Charleston 4, W. Va.
Farm Etta R. Pritchard Acres 100
Location (waters) _____
Well No. 9 (Serial No. 1103) Elev. 1003.57
District Stonewall County Wayne

The surface of tract is owned in fee by _____
Address _____

Mineral rights are owned by Etta R. Pritchard Estate
c/o R. G. Pritchard Address Wayne, W. Va.

Drilling commenced 6-9-60

Drilling completed 9-21-60

Date Shot 9-27-60 From 4064 To 4078
10-5-60 From 4064 To 4078

With 91-2/3# Gelatin & 666-2/3# Trojan Powder
(1st Shot) (2nd Shot)

Open Flow _____ /10ths Water in _____ Inch

_____ /10ths Merc. in _____ Inch

Volume Big Six Sand 90 M Cu. Ft.

Rock Pressure 1190 lbs. 69 hrs.

Oil _____ bbls., 1st 24 hrs.

Fresh water 460-470 feet _____ feet

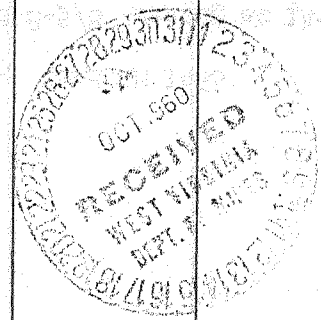
Salt water 1105 feet 1862 feet

Casing and Tubing	Used in Drilling	Left in Well	Packers
Size			Kind of Packer
16			
13			Larkin Upside-down
10 3/4	663'9"	663'9"	Size of
8 1/2 5/8	1462'8"	Pulled	3 1/2 x 5 1/2 x 16
6 1/2 7"	1920'9"	1920'9"	Depth set
5 3/16 1/2	3864'7"	3864'7"	4023 - 4029
3 1/2		4060'11"	Perf. top 4050
2			Perf. bottom 4061
Liners Used			Perf. top
			Perf. bottom

CASING CEMENTED _____ SIZE _____ No. Ft. _____ Date _____

COAL WAS ENCOUNTERED AT 222 FEET 24 INCHES
546 FEET 36 INCHES 622 FEET 48 INCHES
FEET INCHES FEET INCHES

Formation	Color	Hard or Soft	Top	Bottom	Oil, Gas or Water	Depth Found	Remarks
Surface	Red	Soft	0	6			
Sand	Yellow	Med.	6	31			
Sand	Grey	Hard	31	46			
Shale	Blue	Soft	46	60			
Slate	Blue	Soft	60	85			
Sand	Grey	Med.	85	90			
Slate	White	Soft	90	98			
Red Rock	Red	Soft	98	106			
Slate	White	Soft	106	127			
Sand	Grey	Hard	127	141			
Sand	Light	Hard	141	147			
Slate	Dark	Soft	147	175			
Sand	Light	Hard	175	186			
Slate	White	Soft	186	204			
Sand	White	Hard	204	212			
Slate	Dark	Soft	212	222			
Coal	Black	Soft	222	224			
Slate	White	Soft	224	267			
Sand	Light	Hard	267	279			
Slate	Light	Soft	279	290			
Slate	Black	Soft	290	325			
Sand	White	Hard	325	340			
Sand, Bro.	White	Med.	340	365			
Slate	Light	Soft	365	368			
Sand	White	Hard	368	546			
Coal	Black	Soft	546	549			Water 460-470', 2 BPH
Shale	Dark	Soft	549	560			
Sl & Shls	Light	Med.	560	592			
Sl & Shls	Light	Soft	592	602			
Sand	White	Hard	602	618			
Slate	Light	Soft	618	622			
Coal	Black	Soft	622	626			
Slate	Light	Soft	626	664			
Slate	Dark	Soft	664	686			7-5-60 Installed 10-3/4" casing at 664'



Formation	Color	Hard or Soft	Top 26	Bottom	Oil, Gas or Water	Depth Found	Remarks
Sl & Shls	Dark	Soft	686	740			
Sand	White	Med.	740	760			
Sl & Shls	Dark	Soft	760	796			
Sl & Shls	White	Soft	796	857			
Sl & Shls	Dark	Soft	857	897			
Salt Sand	White	Hard	897	912			
Sand	White	Hard	912	942			
Slate	White	Soft	942	948			
Sand	White	Hard	948	963			
Slate	Dark	Soft	963	1016			
Sand	White	Hard	1016	1358	Water 1105', hole full		
Slate	Dark	Soft	1358	1363			
Sand	White	Hard	1363	1367			
Shell	Light	Hard	1367	1369			
Red Rock	--	Soft	1369	1374			
Slate	Dark	Soft	1374	1400			
Red Rock	--	Soft	1400	1406			
Slate	Dark	Soft	1406	1428			
Little Lime	Black	Hard	1428	1433			
Little Lime	Dark	Hard	1433	1450			
Big Lime	White	Hard	1450	1473	SIM 1466 = Sand IM 1468 7-21-60 Installed 8-5/8" casing at 1466' on shoe.		
Big Lime	Grey	Hard	1473	1496			
Big Lime	White	Hard	1496	1629			
Sand	Grey	Hard	1629	1637			
Red Rock	--	--	1637	1662			
Injun Sand	--	--	1662	1669			
Sand	Grey	Med.	1669	1791			
Sand, Bro.	Dark	Med.	1791	1862	Water, 1/3 BPH		
Sl & Shls	Dark	Soft	1862	1919			
Slate	Dark	Soft	1919	1922			
Shells	Dark	Hard	1922	1926			
				1924			
Shells	Dark	Hard	1924	1931	8-1-60 Installed 7" casing at 1931' with Baker Model "G" casing centralizer and shoe.		
Sl & Shls	Dark	Med.	1931	2125			
Sl & Shls	Light	Med.	2125	2171	Packer shells 2163 - 2189		
Shells	Dark	Hard	2171	2189			
Shale	Dark	Soft	2189	2233			
Berea	Grey	Hard	2233	2250	Gas 2250'		5.1 MCF
Slate	White	Soft	2250	2251			
Berea	Grey	Hard	2251	2263	SIM 2263 = Sand IM 2263		
Shells	Light	Hard	2263	2312			
Sl & Shls	White	Hard	2312	2349			
Sl & Shls	Light	Hard	2349	2369			
Shale	Dark	Med.	2369	2403			
Shale	Brown	Med.	2403	2443			
Slate	White	Med.	2443	2466			
Sl & Shls	White	Med.	2466	2517			
Slate	White	Shelly	2517	2610			
Br. Shale	Brown	Shelly	2610	2780			
Br. Shale	Brown	Gritty	2780	2824			
Br. Shale	Brown	Soft	2824	2859			
Br. Shale	Brown	Shelly	2859	2904			
Br. Shale	Brown	Soft	2904	3124	Test 3040'		3. MCF
Slate	White	Soft	3124	3270	Gas 3125'		3.8 MCF
Shale	White	Soft	3270	3336			
Br. Shale	Brown	Soft	3336	3370			
Corn. Lime	Dark	Hard	3370	4050	Test 3391' Gas-? 3419' Black water 3470 - 3476 Test 3674'		3. MCF 3.4 MCF 2.8 MCF

Date October 24, 1960

APPROVED OWENS, LIBBEY-OWENS GAS DEPARTMENT, Owner

By A. H. Smith
A. H. Smith, Mgr. (Title) Land, Engrg. & Geol.



STATE OF WEST VIRGINIA
DEPARTMENT OF MINES
OIL AND GAS DIVISION 26A

Quadrangle Wayne

Permit No. Way-1276

WELL RECORD
(CONTINUED)

Oil or Gas Well GAS
(KIND)

Company OWENS, LIBBEY-OWENS GAS DEPARTMENT
Address P. O. Box 4168, Charleston 4, W. Va.
Farm Etta R. Pritchard Acres 100
Location (waters) _____
Well No. 9 (Serial No. 1103) Elev. 1003.57
District Stonewall County Wayne
The surface of tract is owned in fee by _____
Address _____
Mineral rights are owned by _____
Address _____

Drilling commenced _____
Drilling completed _____
Date Shot _____ From _____ To _____
With _____
Open Flow _____ /10ths Water in _____ Inch
_____ /10ths Merc. in _____ Inch
Volume _____ Cu. Ft.
Rock Pressure _____ lbs. _____ hrs.
Oil _____ bbls., 1st 24 hrs.
Fresh water _____ feet _____ feet
Salt water _____ feet _____ feet

Casing and Tubing	Used in Drilling	Left in Well	Packers
Size			Kind of Packer
16			
13			
10			Size of
8 3/4			
6 3/4			Depth set
5 3/16			
3			Perf. top
2			Perf. bottom
Liners Used			Perf. top
			Perf. bottom

CASING CEMENTED	SIZE	No. Ft.	Date
COAL WAS ENCOUNTERED AT _____ FEET _____ INCHES			
_____ FEET	_____ INCHES	_____ FEET	_____ INCHES
_____ FEET	_____ INCHES	_____ FEET	_____ INCHES

Formation	Color	Hard or Soft	Top	Bottom	Oil, Gas or Water	Depth Found	Remarks
					Gas-? 3741' 9-6-60		3 MCF
					Installed 5 1/2" casing at 3870' with Parmaco Bottom Hole Packer & 55 gal. Kontol & 2 gal. water between 7" and 5 1/2" casing. 9-8-60		
Big Six Sand	Dark	Hard	4050	4122	Pulled 8-5/8" casing. Gas 4070' Gas 4074'		27.3 MCF 35.9 MCF
Slate	Dark	Soft	4122	4129	SIM 4129 = Sand IM 4127 9-27-60		
			Total Depth	4129			
					Shot with 91-2/3# Gelatin from 4064 to 4078' (12:30 P.M.) Test Before Shot: 10-5-60		22.9 MCF
					Test 142 Hrs After Tamp Out: Shot well with 666-2/3# Trojan Powder from 4064 to 4078' (2:32 P.M.) Test Before Shot: Test 26 Hrs.		62.7 MCF 62.7 MCF 112 MCF
					10-11-60 Installed 3 1/2" tubing at 4061' with Larkin Upside-down Packer set from 4023 to 4029'		
					Final Open Flow: Big Six		90 MCF
					10-11-60 Shut-in in 3 1/2" tubing at 6:42 P.M. 6 days after 2nd shot.		