

- New Location.
- Drill Deeper.
- Redrill
- Abandonment 10/8/77

BK. 116 P. 61

Company	Mills Drilling Company Inc
Address	1402 E. LYNN RD WAYNE 25570
Farm	O. J. Spurlock
Tract	Acres 533 Lease No. 2584
Well (Farm) No.	5 Serial No. 1093
Elevation (Spirit Level)	824.80
Quadrangle	Wayne NW
County	Wayne District Union
Engineer	T. S. Flournoy
Engineer's Registration No.	269
File No.	Drawing No.
Date	Mar 8, 1960 Scale 1" = 600 Ft.

STATE OF WEST VIRGINIA
DEPARTMENT OF MINES
OIL AND GAS DIVISION
CHARLESTON

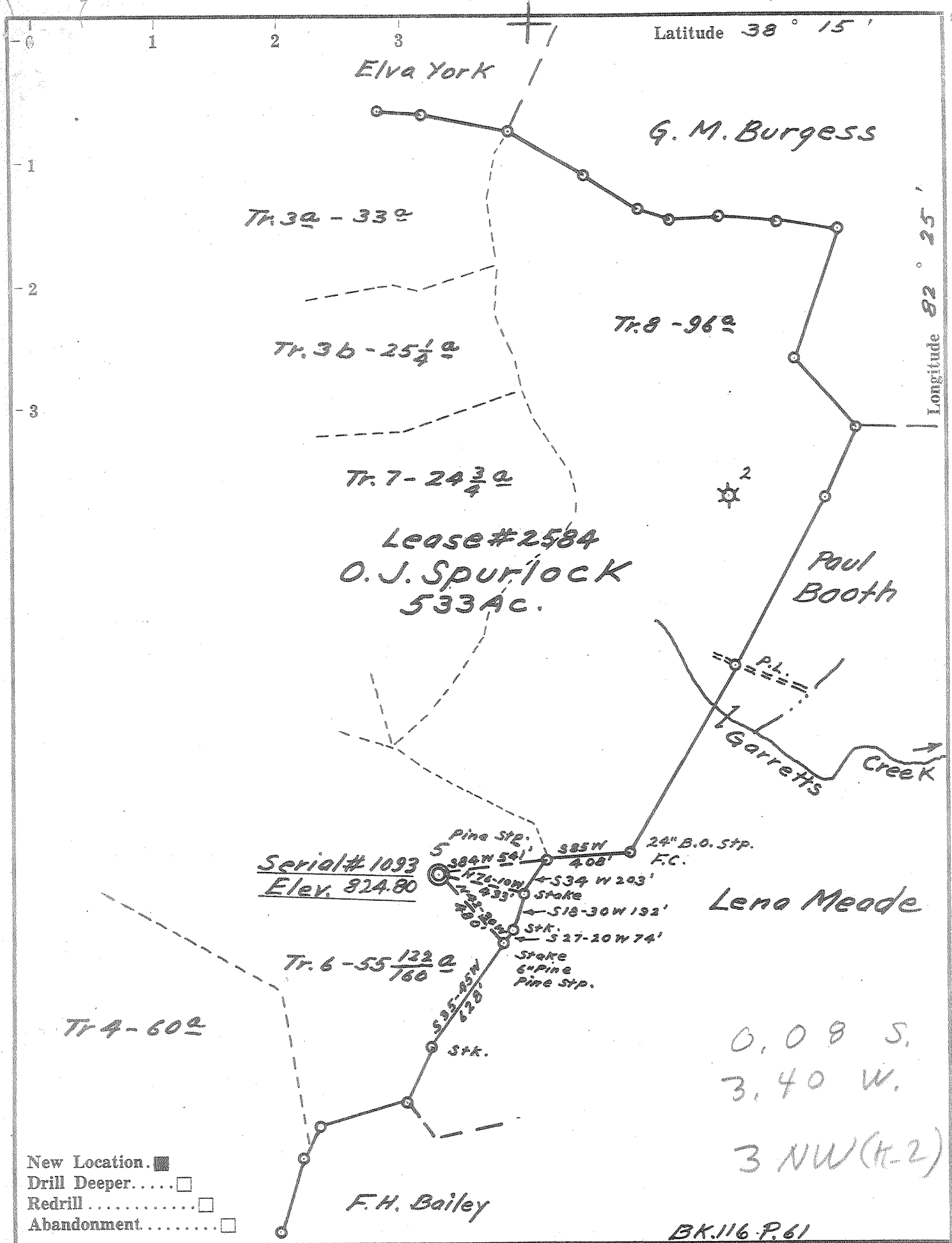
WELL LOCATION MAP
FILE NO. WAY-1269-P

+ Denotes location of well on United States Topographic Maps, scale 1 to 62,500, latitude and longitude lines being represented by border lines as shown.

— Denotes one inch spaces on border line of original tracing.

Deep Well

47-099 OCT 7 1977



Company Owens, Libbey-Owens Gas Dept.
 Address Box 4168 Charleston 4 W. Va.
 Farm O. J. Spurlock
 Tract _____ Acres 533 Lease No. 2584
 Well (Farm) No. 5 Serial No. 1093
 Elevation (Spirit Level) 824.80
 Quadrangle Wayne-NW
 County Wayne District Union
 Engineer T. S. Flournoy
 Engineer's Registration No. 269
 File No. _____ Drawing No. _____
 Date Mar. 8, 1960 Scale 1" = 600 Ft.

STATE OF WEST VIRGINIA
 DEPARTMENT OF MINES
 OIL AND GAS DIVISION
 CHARLESTON

WELL LOCATION MAP
 FILE NO. WAY-1269

+ Denotes location of well on United States Topographic Maps, scale 1 to 62,500, latitude and longitude lines being represented by border lines as shown.

— Denotes one inch spaces on border line of original tracing.

No Samples

Deep Well



STATE OF WEST VIRGINIA
DEPARTMENT OF MINES
OIL AND GAS DIVISION / 0

Quadrangle Wayne

Permit No. Way-1269

WELL RECORD

Oil or Gas Well GAS
(KIND)

Company OWENS, LIBBEY-OWENS GAS DEPARTMENT
Address P. O. Box 4168, Charleston 4, W. Va.
Farm O. J. Spurlock Acres 533
Location (waters) _____
Well No. 5 (Serial No. 1093) Elev. 824.8
District Union County Wayne
The surface of tract is owned in fee by _____
Address _____
Mineral rights are owned by Mr. O. J. Spurlock
P. O. Box 9027 Address Huntington, W. Va.

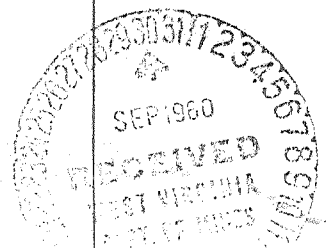
Drilling commenced 3-31-60
Drilling completed 7-3-60
1st. 7-13-60 From 3850 To 3892
Date Shot 8-2-60 From 3850 To 3890
3rd. 8-26-60 From 3850 To 3889
With 266-2/3# Gelatin; 3500# Trojan Powder; and
Open Flow 10ths Water on 5033-1/3# Trojan Powder

_____ /10ths Merc. in _____ Inch
Volume Big Six Sand 51 M Cu. Ft.
Rock Pressure 725 lbs. 47 hrs.
Oil None bbls., 1st 24 hrs.
Fresh water 45; 634 feet 690 feet
Salt water 1011; 1042; feet 2141 feet

Casing and Tubing	Used in Drilling	Left in Well	Packers
Size			
16: 10-3/4	356'8"	356'8"	Parmaco Csg. Anchor 5 1/2 x 14 x 7 @ 3312- Kind of Packer --3315 (Pulled)
13: 8-5/8	1306'2"	Pulled	Parmaco Bottom Hole 5 1/2 x 14 x 7 @ 3647- Size of (Pulled) --3650
10: 7	2133'4"	Pulled	Parmaco Bottom Hole Depth set 5 1/2 x 14 x 7 @ 3647 - 3650
8 1/2: 7	2143'10"	2143'10"	
6 1/2: 5-1/2	3607'7"	Pulled	
5 3/16: 5-1/2	3653'7"	Pulled	
3: 5-1/2	3652'9"	3652'9"	
2: 3-1/2	-----	3824'5"	Perf. bottom
Liners Used			Perf. top
			Perf. bottom

CASING CEMENTED _____ SIZE _____ No. Ft. _____ Date _____
COAL WAS ENCOUNTERED AT 303 FEET 48 INCHES
_____ FEET _____ INCHES _____ FEET _____ INCHES
_____ FEET _____ INCHES _____ FEET _____ INCHES

Formation	Color	Hard or Soft	Top	Bottom	Oil, Gas or Water	Depth Found	Remarks
Clay	Red	Soft	0	20			
Slate	Blue	Soft	20	38			
Red Rock	Red	Soft	38	45	Water at 45', 50 gal. per Hour		
Slate	Blue	Soft	45	56			
Sand	White	Soft	56	66			
Slate	Blue	Soft	66	126			
Slate	White	Soft	126	176			
Sand	Grey	Soft	176	186			
Slate	Blue	Soft	186	228			
Sand	White	Soft	228	240			
Slate	White	Soft	240	265			
Sand	Grey	Soft	265	275			
Slate	Blue	Soft	275	303			
Coal	Blue	Soft	303	307			
Slate	Blue	Soft	307	334	4-2-60		
Sand	Blue	Medium	334	382	Installed 10-3/4" casing at 356' on shoe		
Slate	Blue	Soft	382	446			
Sand	Grey	Medium	446	496			
Sand, Bro.	Grey	Soft	496	508			
Sand	White	Soft	508	551			
Slate	White	Soft	551	573			
Sand	Grey	Medium	573	585			
Slate	Black	Soft	585	628			
Salt Sand	White	Medium	628	639	Water at 634', 1 BPH		
Salt Sand	White	Soft	639	670			
Slate	Blue	Soft	670	679			
Sand	White	Hard	679	696	Water at 690', 2 BPH		
Salt Sand	White	Medium	696	712			
Slate	Black	Soft	712	726			
Sand	Grey	Medium	726	754			
Slate	White	Soft	754	768			
Salt Sand	White	Hard	768	814			
Sl & Shls	Dark	Medium	814	850			
Salt Sand	White	Hard	850	863			
Slate	Blue	Soft	863	900			



Formation	Color	Hard or Soft	Top /0	Bottom	Oil, Gas or Water	Depth Found	Remarks
Lime Shls.	Blue	Hard	900	971			
Lime	Grey	Hard	971	1001			
Salt Sand	White	Med.	1001	1011	Water at 1011, hole filling		
Sand	White	Hard	1011	1073	Water at 1042', hole full		
Slate	Grey	Soft	1073	1077			
Sand	White	Medium	1077	1094			
Sand	White	Hard	1094	1126			
Slate	Grey	Soft	1126	1145			
Lime	Blue	Hard	1145	1168			
Lime	White	Soft	1168	1172			
Sand	White	Hard	1172	1185			
Red Rock	Red	Soft	1185	1190			
Gritty Lime	Grey	Hard	1190	1203			
Lime Shells	White	Hard	1203	1211			
Slate	Blue	Soft	1211	1221			
Sl & Shls	Blue	Medium	1221	1229			
Red Rock	Red	Soft	1229	1234			
Slate	Blue	Soft	1234	1255			
Little Lime	Grey	Hard	1255	1262			
Slate	Grey	Soft	1262	1265			
Little Lime	Grey	Hard	1265	1290			
Slate	Light	Soft	1290	1293			
Big Lime	White	Hard	1293	1471	SLM 1293 = Sand IM 1293 4-20-60 Installed 8-5/8" casing at 1307'6" on shoe		
Big Injun	Blue	Soft	1471	1648			
Sl & Shls	Blue	Soft	1648	1663			
Lime Shells	Dark	Hard	1663	1685			
Sl & Shls	Blue	Medium	1685	1702			
Slate	Blue	Soft	1702	1717			
Shells	Blue	Medium	1717	1724			
Slate	Blue	Soft	1724	1762			
Sl & Shls	Blue	Soft	1762	1802			
Shells	Blue	Medium	1802	1817			
Sl & Shls	Blue	Soft	1817	1822			
Sl & Shls	Blue	Medium	1822	1877			
Sl & Shls	Grey	Soft	1877	1898			
Lime Shls	Grey	Hard	1898	1935			
Slate	White	Soft	1935	1991			
Shells	Dark	Hard	1991	2001			
Lime Shells	Grey	Hard	2001	2025			
Sl & Shls	Light	Soft	2025	2059			
Slate	Brown	Soft	2059	2078			
Berea	Grey	Medium	2078	2110	Gas 2090'		245 cu.ft.
Shells	Grey	Hard	2110	2133	5-5-60 Installed 7" casing at 2133' on shoe		
Shells	Blue	Hard	2133	2141	5-6-60 Test; 5 bailers water at 2141'		
Shells	Grey	Hard	2141	2144	5-9-60 Pulled 7" casing 5-11-60 Installed 7" casing at 2144'		
Lime Shells	Grey	Hard	2144	2151			
Slate	Light	Soft	2151	2157			
Shells	Grey	Hard	2157	2185			
Slate	Blue	Soft	2185	2206			
Br. Shale	Brown	Soft	2206	2255			
Slate	Grey	Soft	2255	2265			
Br. Shale	Brown	Soft	2265	2361	SIM 2316 = Sand IM 2316		
Sl & Shls	Blue	Medium	2361	2406			
Slate	Grey	Soft	2406	2437			
Br. Shale	Brown	Soft	2437	2451			
Sl & Shls	Grey	Soft	2451	2460			
Br. Shale	Brown	Soft	2460	2521			
Br. Shale	Dark	Medium	2521	2559			

Date September 21, 1960, 19

APPROVED OWENS, LEBBEY-OWENS GAS DEPARTMENT, Owner

By A. H. Smith
A. H. Smith, Mgr. (Title) Engng. & Geol.



STATE OF WEST VIRGINIA
DEPARTMENT OF MINES
OIL AND GAS DIVISION 10A

Quadrangle Wayne

WELL RECORD

Permit No. Way-1269

CONTINUED

Oil or Gas Well GAS
(KIND)

Company OWENS, LIBBEY-OWENS GAS DEPARTMENT
Address P. O. Box 4168, Charleston 4, W. Va.
Farm O. J. Spurlock Acres 533
Location (waters) _____
Well No. 5 (Serial No. 1093) Elev. 824.8
District Union County Wayne
The surface of tract is owned in fee by _____
Address _____
Mineral rights are owned by _____
Address _____
Drilling commenced _____
Drilling completed _____
Date Shot _____ From _____ To _____
With _____
Open Flow _____ /10ths Water in _____ Inch
_____ /10ths Merc. in _____ Inch
Volume _____ Cu. Ft.
Rock Pressure _____ lbs. _____ hrs.
Oil _____ bbls., 1st 24 hrs.
Fresh water _____ feet _____ feet
Salt water _____ feet _____ feet

Casing and Tubing	Used in Drilling	Left in Well	Packers
Size			
16			Kind of Packer
13			
10			Size of
8 1/4			
6 3/8			Depth set
5 3/16			
3			Perf. top
2			Perf. bottom
Liners Used			Perf. top
			Perf. bottom

CASING CEMENTED _____ SIZE _____ No. Ft. _____ Date _____
COAL WAS ENCOUNTERED AT _____ FEET _____ INCHES
_____ FEET _____ INCHES FEET _____ INCHES
_____ FEET _____ INCHES FEET _____ INCHES

Formation	Color	Hard or Soft	Top	Bottom	Oil, Gas or Water	Depth Found	Remarks
Br. Shale	Brown	Soft	2559	2716			
Slate	Light	Soft	2716	2732			
Slate	White	Medium	2732	2748			
Br. Shale	Brown	Soft	2748	2934			
Slate	White	Soft	2934	3106			
Slate	Grey	Soft	3106	3134			
Br. Shale	Brown	Soft	3134	3174			
Corn. Lime	Dark	Hard	3174	3207			
Corn. Lime	Light	Hard	3207	3226			
Corn. Lime	Grey	Hard	3226	3244			
Corn. Lime	Light	Hard	3244	3364			
Corn. Lime	Dark	Hard	3364	3416			
Corn. Lime	Blue	Hard	3416	3443			
Corn. Lime	Dark	Hard	3443	3609			
							3174 825 2349
							Sulfur gas at 3374', also black water
							6-28-60
							Installed 5-1/2" casing at 3609' with Parmaco Bottom Hole Packer and Parmaco Casing Anchor Packer.
							108 gal. K-141 Kontol mixed with 270 gal. water between packers.
Corn. Lime	Grey	Hard	3609	3612			
Corn. Lime	White	Hard	3612	3653			48 Hr. test, 3613' 20 gal. water
							6-10-60
							Pulled 5-1/2" casing
Corn. Lime	Grey	Hard	3653	3656			
							6-13-60
							Installed 5-1/2" casing at 3650' with Parmaco Casing Anchor Packer set from 3312 to 3315 and Parmaco Bottom Hole Packer set from 3647 to 3650.
							Put in 110 gal. Kontol mixed with 275 gal. water between packers.
Corn. Lime	Light	Hard	3656	3768			
							6-18-60
							Pulled 8-5/8" casing
Corn. Lime	Dark	Hard	3768	3809			
Corn. Lime	White	Hard	3809	3819			
Corn. Lime	Dark	Hard	3819	3866			Gas 3861'

(Over)

SEP 1960
7.5 MCF

Formation	Color	Hard or Soft	Top /oA	Bottom	Oil, Gas or Water	Depth Found	Remarks
Gritty Lime	Grey	Hard	3866	3869	Gas 3868		20.3 MCF
Corn. Lime	Dark	Hard	3869	3882	Test 3872		18.8 MCF
					Gas 3875		22.9 MCF
Sand.	Light	Hard	3882	3886			
Sand	Grey	Hard	3886	3892	7-1-60		
					45 gal. Black water		
Sand	Light	Hard	3892	3924			
Sand	Grey	Hard	3924	3930			
Red Rock	Red	Soft	3930	3940	SIM 3940	Sand IM 3940	
			Total Depth 3940		7-6-60		
					Bottom packer presumed to be leaking pulled 5-1/2" casing.		
					7-7-60		
					Re-installed 5-1/2" casing at 3650' with one packer. Used Parmaco Bottom Hole Packer.		
					Test 3940		12.9 MCF
					7-13-60		
					Test Before Shot: 16. MCF		
			Filled hole to 3892		Shot well with 266-2/3# Gelatin from 3850 to 3892. Tamped with 45' pea gravel.		
					7-14-60		
					Drilled out tamp 8 P. M.		
					8-1-60		
					Test		21.2 MCF
					8-2-60		
					Shot well with 3500# Trojan Powder from 3850 to 3890' (7:34 P.M.)		
					Tamped with 100' pea gravel		
					Time Bomb set for 3 Hrs.		
					Test Before Shot:		21.2 MCF
					Shot shut off gas		
					8-5-60		
					Tamp drilled out at 3 P.M.		
					8-6-60		
					Test 32 Hrs. After Tamp Out: 62.2 MCF		
					8-25-60		
					Test		33.2 MCF
					8-26-60		
					Shot 3rd time with 5033-1/3# Trojan Powder from 3850 to 3889' (10:06 P.M.)		
					Tamped with 118' pea gravel		
					Time Bomb set for 2 Hrs.		
					Test Before Shot:		34.1 MCF
					Tamp did not move		
					Shot shut off gas		
					9-1-60		
					Drilled out tamp at 2:50 P.M.		
					Test 15 Hrs. After Tamp Out: 66. MCF		
					9-2-60		
					Installed 3-1/2" tubing at 3824' on Larkin Upside Down Packer set 3694 to 3700'		
					Final Open Flow 30 Hrs. After Tamp Out: Big Six Sand 51. MCF		
					Shut-in in 3-1/2" tubing (8:30 P.M.) 7 days after 3rd shot.		

Date September 21, 1960

APPROVED OWENS, LIBBY-OWENS GAS DEPARTMENT, Owner

By A. H. Smith
A. H. Smith, (Title) Land, Parg. & Geol.