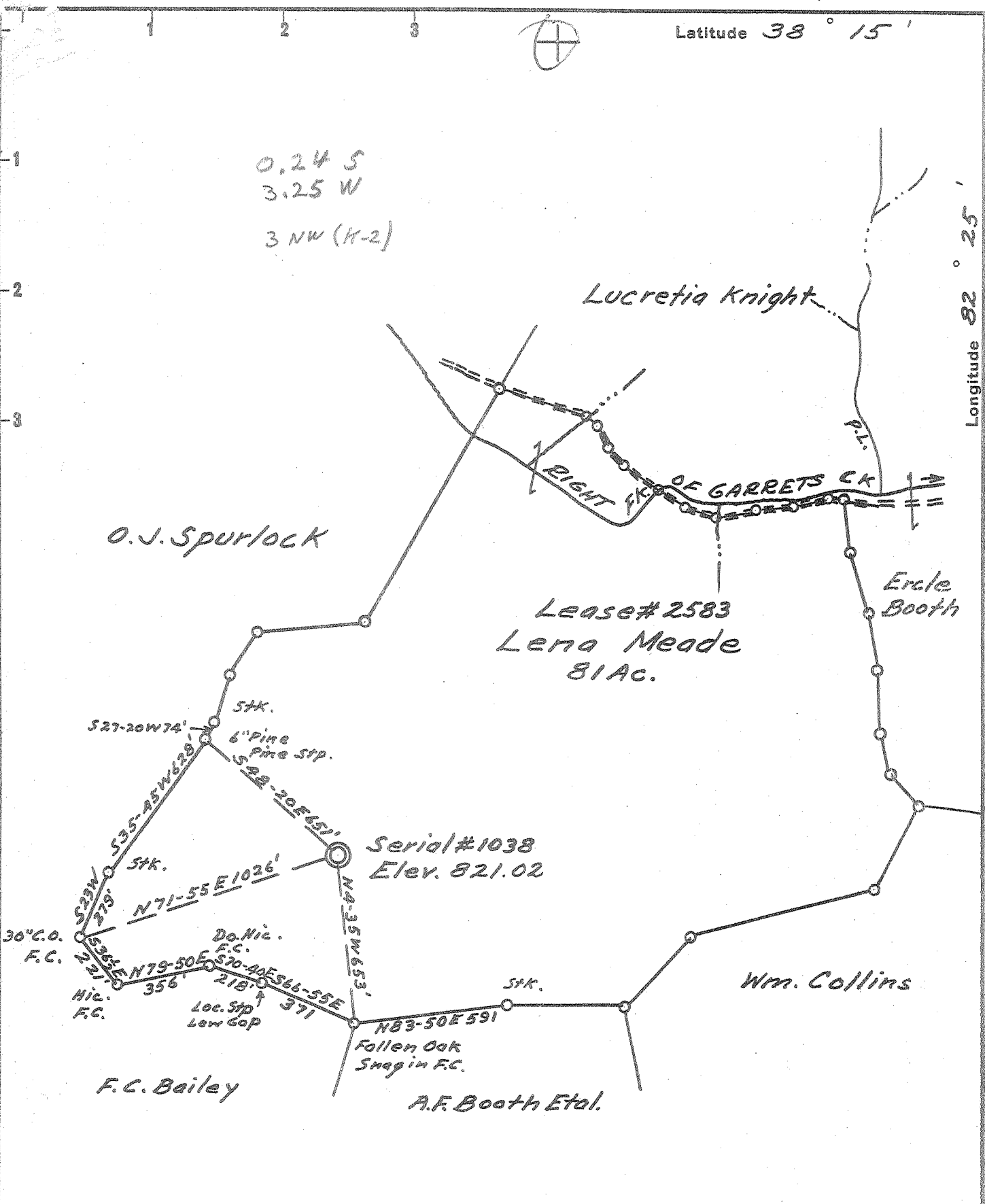


Latitude 38° 15'

Longitude 82° 25'



- New Location...
- Drill Deeper.....
- Abandonment.....

BK. 112 P68-71

Company Owens, Libbey-Owens Gas Dept
 Address Box 4158 Charleston 4 W.Va.
 Farm Lena Meade
 Tract _____ Acres 81 Lease No. 2583
 Well (Farm) No. 1 Serial No. 1038
 Elevation (Spirit Level) 821.02
 Quadrangle Wayne 35 0.23 "N 3.26" NW
 County Wayne District Union
 Engineer T.S. Flournoy
 Engineer's Registration No. 269
 File No. _____ Drawing No. _____
 Date April 3, 1958 Scale 1" = 500 Ft.

STATE OF WEST VIRGINIA
 DEPARTMENT OF MINES
 OIL AND GAS DIVISION
 CHARLESTON

WELL LOCATION MAP
 FILE NO. WAY-1083

+ Denotes location of well on United States Topographic Maps, scale 1 to 62,500, latitude and longitude lines being represented by border lines as shown.

= Denotes one inch spaces on border line of original tracing.

6-0 229
 Deep Well



STATE OF WEST VIRGINIA
DEPARTMENT OF MINES
OIL AND GAS DIVISION 12

Quadrangle Wayne

Permit No. Way-1083

WELL RECORD

Oil or Gas Well DRY HOLE
(KIND)

Company OWENS, LIBBEY-OWENS GAS DEPARTMENT
Address P. O. Box 4158, Charleston 4, W. Va.
Farm Lena Meade Acres 81

Location (waters) _____
Well No. 1 (Serial No. 1038) Elev. 821.02
District Union County Wayne

The surface of tract is owned in fee by _____
Address _____

Mineral rights are owned by Lena Meade & A. M. Meade,
R.F.D. 1, Box 40 Address Wayne, W. Va.

Drilling commenced 5-1-58
Drilling completed 8-6-58

Date Shot _____ From _____ To _____
With _____

Open Flow /10ths Water in _____ Inch
/10ths Merc. in _____ Inch

Volume _____ Cu. Ft.

Rock Pressure _____ lbs. _____ hrs.

Oil _____ bbls., 1st 24 hrs.

WELL ACIDIZED _____

WELL FRACTURED _____

RESULT AFTER TREATMENT _____

ROCK PRESSURE AFTER TREATMENT _____

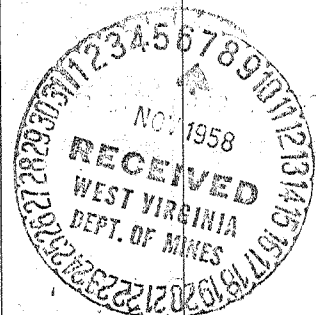
Fresh Water 310, 695, Feet _____ Salt Water 970 Feet _____

Casing and Tubing	Used in Drilling	Left in Well	Packers
Size			
16			Kind of Packer _____
13			Comb. Lead & Rubber _____
10 3/4"	425' 11"	425' 11"	Size of _____ Shoe _____
8 5/8"	1299' 7"	1299' 7"	8-5/8"
6 7/8"	2120	2120	Depth set _____ 1299'
5 3/16			
3			Perf. top _____
2			Perf. bottom _____
Liners Used _____			Perf. top _____
			Perf. bottom _____

CASING CEMENTED _____ SIZE _____ No. Ft. _____ Date _____

COAL WAS ENCOUNTERED AT 109 FEET 48 INCHES
316 FEET 48 INCHES FEET INCHES
FEET INCHES FEET INCHES

Formation	Color	Hard or Soft	Top	Bottom	Oil, Gas or Water	Depth	Remarks
Surface	Yellow	Soft	0	14			
Red Clay	Red	Soft	14	24			
Slate	Grey	Soft	24	37			
Slate	Black	Soft	37	71			
Red Rock	Red	Soft	71	91			
Slate	Grey	Soft	91	109			
Coal	Black	Soft	109	113			
Slate	Grey	Soft	113	119			
Slate	Light	Soft	119	149			
Red Rock	Red	Soft	149	164			
Slate	Light	Soft	164	226			
Sand	Grey	Soft	226	241			
Slate	Light	Soft	241	266			
Sand	Dark	Soft	266	281			
Slate	Light	Soft	281	283			
Slate	Light	Soft	283	310			
Shells	Light	Hard	310	316			
Coal	Black	Soft	316	320			
Slate	Light	Soft	320	322			
Sand	Light	Med.	322	363			
Slate	Grey	Soft	363	370			
Sand	Light	Med.	370	375			
Slate	Grey	Soft	375	390			
Slate	Light	Soft	390	426			
Slate	Light	Soft	426	431			
Sand	Light	Med.	431	452			
Sand	Light	Soft	452	500			
Slate	Grey	Soft	500	508			
Sand	Light	Soft	508	531			
Slate	Light	Soft	531	551			



Water at 310', 1 B. in 48 hours.

5-6-58 Ran 103/4" casing on shoe at 425' 11"

Formation	Color	Hard or Soft	Top <i>12</i>	Bottom	Oil, Gas or Water	Depth Found	Remarks
Sand	Light	Soft	551	579			
Slate	Light	Soft	579	615			
Sand	Light	Soft	615	632			
Sand	Light	Med.	632	647			
Slate	Grey	Soft	647	681			
Sand	Light	Soft	681	696	Water at 695', 1 B.P.H.		
Slate	Dark	Soft	696	721			
Sand	Light	Soft	721	736			
Slate	Dark	Soft	736	763			
Sand	Light	Soft	763	769			
Slate	Light	Soft	769	786			
Sand	Dark	Soft	786	807			
Slate	Dark	Soft	807	830			
Sand	Light	Med.	830	855			
Slate	Dark	Soft	855	857			
Slate	Light	Soft	857	897			
Sand	Light	Soft	897	907			
Slate	Light	Soft	907	920			
Sand	Light	Med.	920	964			
Sand	White	Hard	964	976	Water at 970', 4 B.P.H.		
Sand	Light	Med.	976	1118	Water level 290' at 1082'		
Slate	Light	Soft	1118	1123			
Sand	Light	Hard	1123	1222			
Slate	Light	Soft	1222	1233			
Red Rock	Red	Soft	1233	1240			
Slate	Light	Soft	1240	1242			
Slate	Light	Soft	1242	1254	Ran 8-5/8" csg. at 1242 set in red mud		
Little Lime	White	Hard	1254	1287			
Big Lime	White	Hard	1287	1463	SIM 1311 = Sand IM 1308		
Grey Injun	Grey	Hard	1463	1503			
Slate	Light	Soft	1503	1523	Pipe dropped 11 ft. 5-24-58 Pulled 8-5/8" casing with hydraulic jack 5-27-58 Reaming bad hole Ran 8-5/8" casing on shoe at 1255-1/2". Pulled 8-5/8" casing. 6-28, 29, 6-2, 3 Reaming hole & running straightener. 6-4-58 Ran 8-5/8" casing on lead & rubber shoe at 1299'7" 6-5-58 Water coming from Injun Sand; test at 1523', 2-1/2 gal. per hour. 30 Min. tests; 1305 - no water. Water at 1525', 2 gal. per hour.		
Gritty Lime	Grey	Med.	1523	1569			
Sand	Grey	Soft	1569	1603			
Sand	Grey	Med.	1603	1638			
Slate & Shells	Light	Soft	1638	2018	Water at 1638', 1 B.P.H.		
Lime	Grey	Med.	2018	2044			
Sl. & Shls.	Grey	Soft	2044	2060			
Black Slate	Black	Soft	2060	2068			
Sl. & Shls.	Dark	Med.	2068	2090			
Coffee Shale	Brown	Soft	2090	2093	SIM 2093 = Sand IM 2093		
Berea	Grey	Hard	2093	2106			
Sl. & Shls.	Dark	Soft	2106	2112			
Shells	Grey	Hard	2112	2114	6-17, 23 Reaming & bailing water. Making Birdwell Survey. SIM 2113 7-1-58 Ran 7" casing on shoe at 2112'6" Tools would not drill ahead 7-2-58 Pulled 7" casing & shoe at 2110'8" Filled hole with limestone & tin; will drill out to straighten hole. 7-7, 8, 9, 10, 11 Reaming 8" hole.		
Shells	-	-	2113	2118			
Sl. & Shls.	Grey	Hard	2119	2127	7-18-58 SIM 2119 Ran 7" casing on shoe at 2119'		
Lime	Light	Hard	2127	2130			

Date November 6, 19 58

APPROVED OWENS, LIBBEY-OWENS GAS DEPARTMENT, Owner

By *A. H. Smith* (Title) Geologist



STATE OF WEST VIRGINIA
DEPARTMENT OF MINES
OIL AND GAS DIVISION 12A

Quadrangle Wayne
Permit No. Way-1083

WELL RECORD

Oil or Gas Well DRY HOLE
(KIND)

Company OWENS, LIBBEY-OWENS GAS DEPARTMENT
Address P. O. Box 4158, Charleston 4, W. Va.
Farm Lena Meade Acres 81
Location (waters) _____
Well No. 1 (Serial No. 1038) Elev. 821.02
District Union County Wayne
The surface of tract is owned in fee by _____
Address _____
Mineral rights are owned by _____
Address _____
Drilling commenced _____
Drilling completed _____
Date Shot _____ From _____ To _____
With _____
Open Flow /10ths Water in _____ Inch
/10ths Merc. in _____ Inch
Volume _____ Cu. Ft.
Rock Pressure _____ lbs. _____ hrs.
Oil _____ bbls., 1st 24 hrs.
WELL ACIDIZED _____
WELL FRACTURED _____

Casing and Tubing	Used in Drilling	Left in Well	Packers
Size			Kind of Packer _____
16			
13			Size of _____
10			
8 1/4			Depth set _____
6 5/8			
5 3/16			Perf. top _____
3			Perf. bottom _____
2			Perf. top _____
Liners Used			Perf. bottom _____

CASING CEMENTED _____ SIZE _____ No. Ft. _____ Date _____

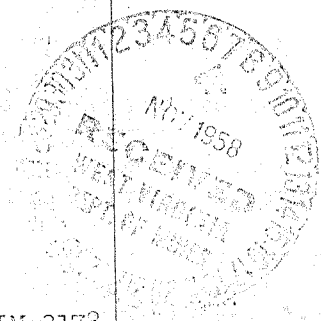
COAL WAS ENCOUNTERED AT _____ FEET _____ INCHES
_____ FEET _____ INCHES FEET _____ INCHES
_____ FEET _____ INCHES FEET _____ INCHES

RESULT AFTER TREATMENT _____
ROCK PRESSURE AFTER TREATMENT _____
Fresh Water _____ Feet Salt Water _____ Feet

Formation	Color	Hard or Soft	Top	Bottom	Oil, Gas or Water	Depth	Remarks
Continued from previous page:							
Sl. & Shls.	Light	Med.	2130	2149			
Slate	Light	Med.	2149	2155			
Shells	Light	Hard	2155	2158			
Lime Shells	Grey	Hard	2158	2177			
Sl. & YShls.	Grey	Soft	2177	2206			
Sl. & Sha.	Grey	Soft	2206	2223			
Brown Shale	Brown	Soft	2223	2246			
Sha. & Shls.	Brown	Soft	2246	2266			
Sl. & Shls.	Grey	Soft	2266	2338			
Lime Shells	Grey	Hard	2338	2342			
Sl. & Shls.	Grey	Soft	2342	2361			
Sl. & Shls.	Light	Soft	2361	2404			
Lime Shells	Light	Hard	2404	2410			
Sl. & Shls.	Light	Soft	2410	2446			
Sl. & Shls.	Grey	Soft	2446	2481			
Sl. & Shls.	Light	Soft	2481	2511			
Br. Shale	Brown	Soft	2511	2590			
Sl. & Shls.	Light	Soft	2590	2630			
Br. Shale	Brown	Soft	2630	2728			
Sl. & Shls.	Light	Soft	2728	2768			
Br. Shale	Brown	Soft	2768	2835			
Sl. & Shls.	Light	Soft	2835	2851			
Br. Shale	Brown	Soft	2851	2948			
Slate	Light	Soft	2948	3101			
Slate	Light	Soft	3101	3133			
Br. Shale	Brown	Soft	3133	3169			
Lime Shells	Dark	Hard	3169	3178			
Corn. Lime	Dark	Hard	3178	3186			

SIM 2481 = Sand IM 2482
Started using Linco at 2481'

SIM 3178 = Sand IM 3178



Formation	Color	Hard or Soft	Top / ^{ft} A	Bottom	Oil, Gas or Water	Depth Found	Remarks
Corn. Lime	Grey	Hard	3186	3196			
" "	Light	Hard	3196	3224			8-6, 7, 8, 9 Fishing for 6" bit. 8-12-58 Birdwell taking pictures. 8-14, 15, 18, 19 Fishing for bit. 8-26, 27, 28, 29 Tried to mill pin on bit. 9-4, 5, 6 Trying to drill by 6" bit. 9-9-58 Shot with 100# Detonite from 3221-1/2 to 3211-1/2' 9-10-58 Shot with 350# Detonite from 3219 to 3181' 9-11, 12 Cleaned out to top of bit; drilling by. 9-18-58 Birdwell making pictures. 9-22, 23, 24, 25, 26, 27, 29, 30 Fishing for bit. 10-2-58 Used 4 bags cement at 3227 to secure bit in hole. 10-7, 8, 9 Drilling out cement to 3227' 10-10-58 Filled hole with cast iron to 3225 and drilled out. 10-13, 14, 21, 22, 23, 24 Drilling by. 10-28-58 Shot with 500# Gelatin from 3175 to 3225 ft. Test in 15 Min. - No gas. 10-29-58 Cleaning out on top of bit. Tools would not run on bottom. 10-31-58 Set rock bridge from 2950-3000' Shot from 2510 to 2950 - No gas. Will plug well.

Date November 6, 19 58

APPROVED OWENS, LIBBEY-OWENS GAS DEPARTMENT, Owner

By *A. H. Smith*
A. H. Smith (Title) Geologist

