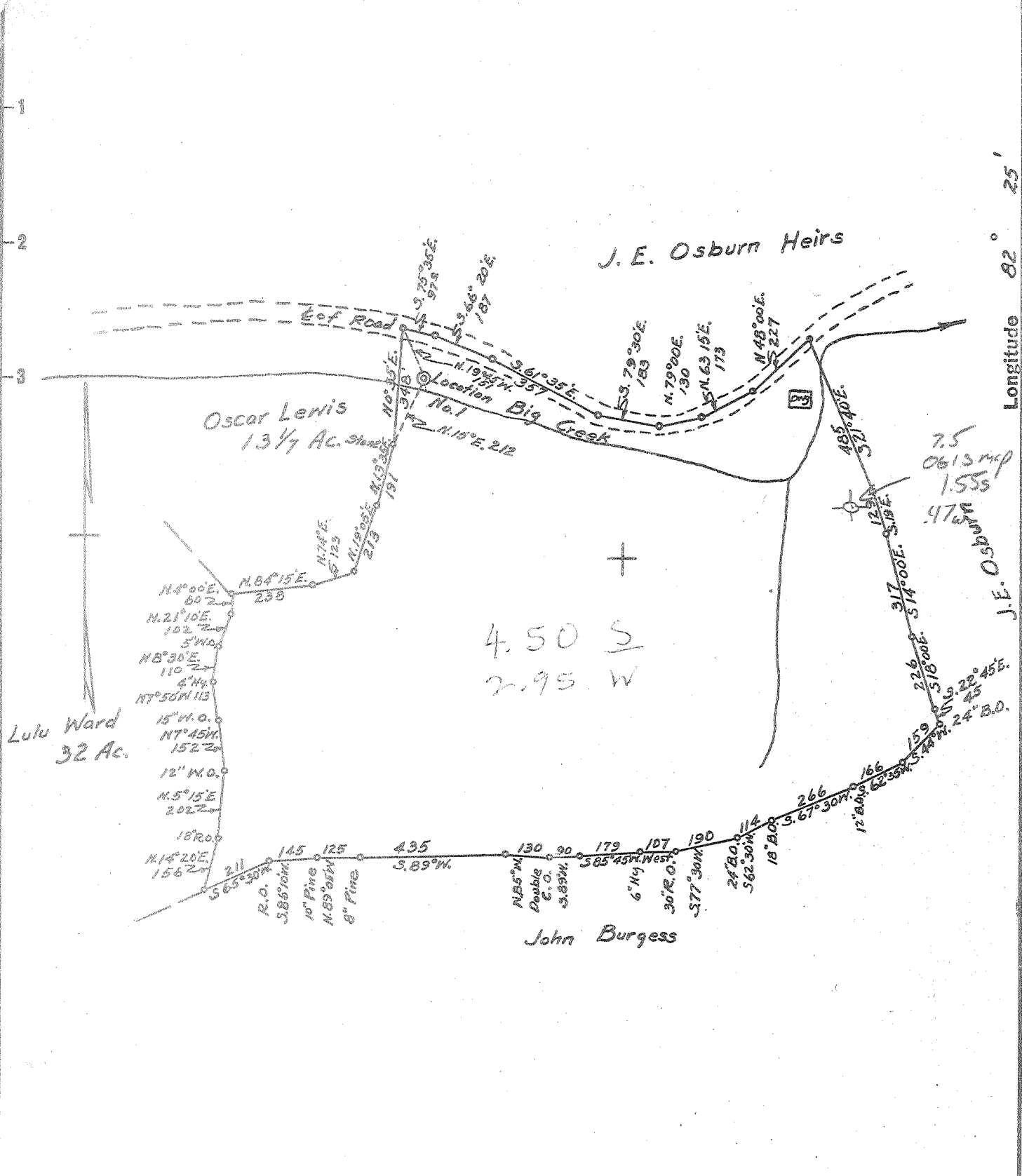


P 38° 17' 30"
Latitude 38° 20'



New Location
 Drill Deeper
 Abandonment

Company	WEDSTER MYERS
Address	HUNTINGTON, W. VA.
Farm	INA DARLING, ETAL.
Tract	Acres 96.6 Lease No.
Well (Farm) No.	1 Serial No.
Elevation (Spirit Level)	620
Quadrangle	GUYANDOT - S.W.
County	WAYNE District UNION
Engineer	E. G. Ewing
Engineer's Registration No.	309
File No.	Drawing No.
Date	4-18-57 Scale 1" = 400

STATE OF WEST VIRGINIA
 DEPARTMENT OF MINES
 OIL AND GAS DIVISION
 CHARLESTON

WELL LOCATION MAP
 FILE NO. WAY-1049

+ Denotes location of well on United States Topographic Maps, scale 1 to 62,500, latitude and longitude lines being represented by border lines as shown.

- Denotes one inch spaces on border line of original tracing.

6-3-229 Deep Well



STATE OF WEST VIRGINIA
DEPARTMENT OF MINES
OIL AND GAS DIVISION

WELL RECORD

Quadrangle Guyardot

Permit No. Way 1049

Oil or Gas Well Gas
(KIND)

Company Webster Myers (Darling Gas Company)
 Address 1614 7th Ave., Huntington, W. Va.
 Farm Ina Darling et al Acres 96.6
 Location (waters) Big Creek
 Well No. 1 Elev. 620
 District Union County Wayne
 The surface of tract is owned in fee by Ina Darling et al.
1731 Poplar St Address Kenova, W. Va.
 Mineral rights are owned by Ina Darling et al.
Same Address _____
 Drilling commenced April 28, 1957
 Drilling completed August 28, 1957
 Date Shot 8/29/57 From 3876-3813
9/16/57 From 2482 To 2882
 With 1st-500 lbs 2nd shot 4000 lbs Gas Well Exp
 Open Flow no increase from 1st shot Inch
 /10ths Merc. in _____ Inch
 Volume 43 M Cu. Ft.
 Rock Pressure 350 lbs. 60 hrs.
 Oil _____ bbls., 1st 24 hrs.
 Fresh water 30 feet
 Salt water 980 feet

Casing and Tubing	Used in Drilling	Left in Well	Packers
Size			Bottom hole
16			Kind of Packer
18	45	45	
10	310	Pulled	Size of <u>6-5/8" x 8 1/4"</u>
8 1/4	1205	Pulled	<u>x 16"</u>
6 1/2	2137	2137	Depth set <u>2137</u>
5 3/16			
3			Perf. top
2			Perf. bottom
Liners Used			Perf. top
			Perf. bottom

CASING CEMENTED none SIZE _____ No. Ft. _____ Date _____
 COAL WAS ENCOUNTERED AT none FEET _____ INCHES _____
 FEET _____ INCHES _____ FEET _____ INCHES _____
 FEET _____ INCHES _____ FEET _____ INCHES _____

Formation	Color	Hard or Soft	Top	Bottom	Oil, Gas or Water	Depth Found	Remarks
Surface			0	10			
Sand & Gravel			10	27	Hydrogen Sulphide gas at 3315		
Red Rock			27	40	Small amount of water 3315		
Blue Mud			40	65	No gas in Big Six Well plugged		
Red Rock			65	95	back and shot in Shale		
Blue Mud			95	125	Set at 3766 Wood Plug-Cement		
Slate			125	190	on top of plug-filled with		
Sand			225	255	clay to 3295-Set in lead & Rubb		
Slate			250	375	er Parmaco plug-put 20 ft of		
Sand			375	450	cement on top of plug-Tested		
Slate			450	550	72 hours for leaks- filled		
Sand			550	635	hole to 3104 with Clay-Bridged		
Slate & Shells			635	920	hole at 2932 and filled with		
Salt Sand			920	1020	slag to 2882-Well shot from		
Slate			1020	1130	2882 to 2482 with 4000 lbs		
Maxon Sand			1130	1185	gas after shot 43 MCF		
Little Lime			1185	1200	Shut in in 7" Casing		
Big Lime			1200	1320	8" Casing 1205		
Keener Sand			1320	1355			
Injun Sand			1355	1450			
Slate & Shells			1450	1985			
Coffie Shale			1985	2005			
Berea Sand			2005	2020			
Shells			2020	2113			
Brown Shale			2113	2210	7" Casing 2137		
Slate			2210	2460			
Brown Shale			2460	2670			
slate			2670	2680			
Brown Shale			2680	2870			
Slate			2870	3060			
Brown Shale			3060	3104			
Corniferous Lime			3104	3786			
Big Six			3786	3813			
Slate			3813	3833	Total depth		

3104
620
2484

