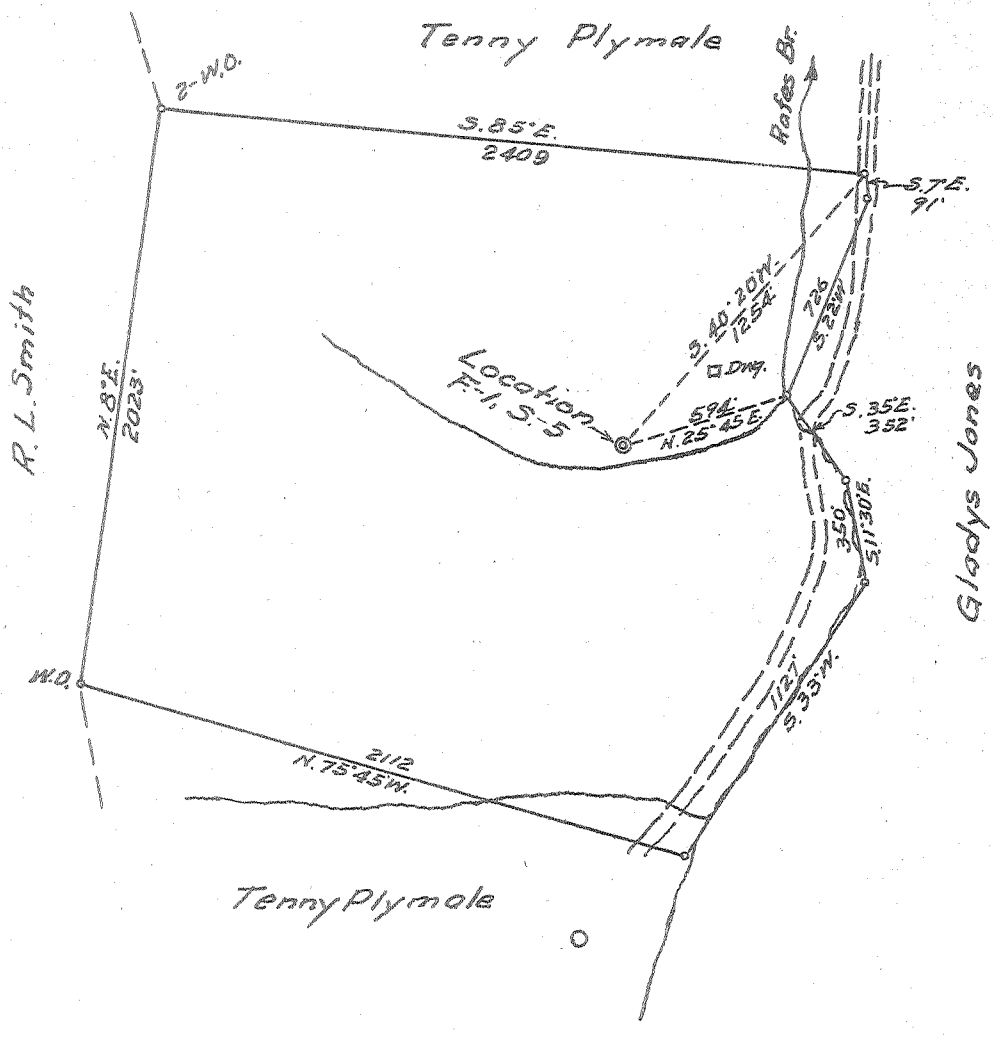


Latitude $38^{\circ} 20'$
 7.5
 0515 map
 03
 1505

Longitude $82^{\circ} 30'$



New Location...
 Drill Deeper.....
 Abandonment.....

| | |
|-----------------------------|--|
| Company | <u>GENEVA GAS CO.</u> |
| Address | <u>HAMLIN, W. VA.</u> |
| Farm | <u>HAROLD PLYMALE</u> |
| Tract | Acres <u>121.4</u> Lease No. _____ |
| Well (Farm) No. | <u>1</u> Serial No. <u>5</u> |
| Elevation (Spirit Level) | <u>620</u> |
| Quadrangle | <u>CEREDO</u> |
| County | <u>WAYNE</u> District <u>UNION</u> |
| Engineer | <u>E. G. Ewing</u> |
| Engineer's Registration No. | <u>309</u> |
| File No. | Drawing No. _____ |
| Date | <u>12-10-54</u> Scale <u>1" = 660'</u> |

STATE OF WEST VIRGINIA
 DEPARTMENT OF MINES
 OIL AND GAS DIVISION
 CHARLESTON

WELL LOCATION MAP
 FILE NO. WAY-970

+ Denotes location of well on United States Topographic Maps, scale 1 to 62,500, latitude and longitude lines being represented by border lines as shown.

- Denotes one inch spaces on border line of original tracing.

6-6 230 Deep well

DEPARTMENT OF MINES
OIL AND GAS DIVISION

WELL RECORD

Permit No. *6ends*
Way-970

Oil or Gas Well *Gas*
(KIND)

Company *Geneva Gas Company*
Address *Hamlin, W. Va.*
Farm *Harold Plymale* Acres *121.4*
Location (waters) *Twelve Pole Creek*
Well No. *5* Elev. *630'*
District *Union* County *Wayne*
The surface of tract is owned in fee by *Harold Plymale*
Address *Rt. #1, Kenova, W. Va.*
Mineral rights are owned by *Same*
Address
Drilling commenced *December 28, 1954*
Drilling completed *February 19, 1955*
Date Shot *Feb. 21, 55* From To
With
Open Flow *2* /10ths Water in *2* Inch
/10ths Merc. in Inch
Volume *67 M.* Cu. Ft.
Rock Pressure *525* lbs. *72* hrs.
Oil bbls., 1st 24 hrs.
Fresh water feet feet
Salt water feet feet

| Casing and Tubing | Used in Drilling | Left in Well | Packers |
|-------------------|---------------------|--------------|--------------------------|
| Size | | | <i>Spang 3 Step Cone</i> |
| 16. | | | Kind of Packer. |
| 13. | | | |
| 10. | | <i>27</i> | Size of. |
| 8 3/4. | | <i>228</i> | |
| 6 5/8. | | | Depth set <i>2070</i> |
| 5 3/16. | | <i>2038</i> | |
| 3. | | <i>692</i> | Perf. top. |
| 2. | <i>Upset Tubing</i> | <i>2070</i> | Perf. bottom. |
| Liners Used | | | Perf. top. |
| | | | Perf. bottom. |

CASING CEMENTED SIZE No. Ft. Date
COAL WAS ENCOUNTERED AT FEET INCHES
FEET INCHES FEET INCHES
FEET INCHES FEET INCHES

| Formation | Color | Hard or Soft | Top | Bottom | Oil, Gas or Water | Depth Found | Remarks |
|----------------|-------|--------------|------|--------|-------------------|-------------|---------|
| Blue Slate | | | 0 | 240 | | | |
| Sand | | | 240 | 360 | | | |
| Slate | | | 360 | 590 | | | |
| Sand | | | 590 | 620 | | | |
| Slate | | | 620 | 975 | | | |
| Salt Sand | | | 975 | 1080 | | | |
| Slate | | | 1080 | 1090 | | | |
| Sand | | | 1090 | 1122 | | | |
| Little Lime | | | 1122 | 1128 | | | |
| Big Lime | | | 1128 | 1298 | | | |
| Sand | | | 1298 | 1340 | | | |
| Slate & Shells | | | 1340 | 1600 | | | |
| Slate | | | 1600 | 1860 | | | |
| Slate & Shells | | | 1860 | 1928 | | | |
| Brown Shale | | | 1928 | 1956 | | | |
| Berea Sand | | | 1956 | 1963 | | | |
| Slate & Shells | | | 1963 | 2030 | | | |
| Brown Shell | | | 2030 | 2105 | | | |
| Slate | | | 2105 | 2550 | | | |
| Brown Shale | | | 2550 | 2655 | | | |
| Slate | | | 2655 | 2675 | | | |
| Brown Shale | | | 2675 | 2755 | | | |
| White Slate | | | 2755 | 2940 | | | |
| Brown Shale | | | 2940 | 2975 | | | |
| Lime | | | 2975 | 2992 | | | |
| Total Depth | | | | 2992 | | | |

