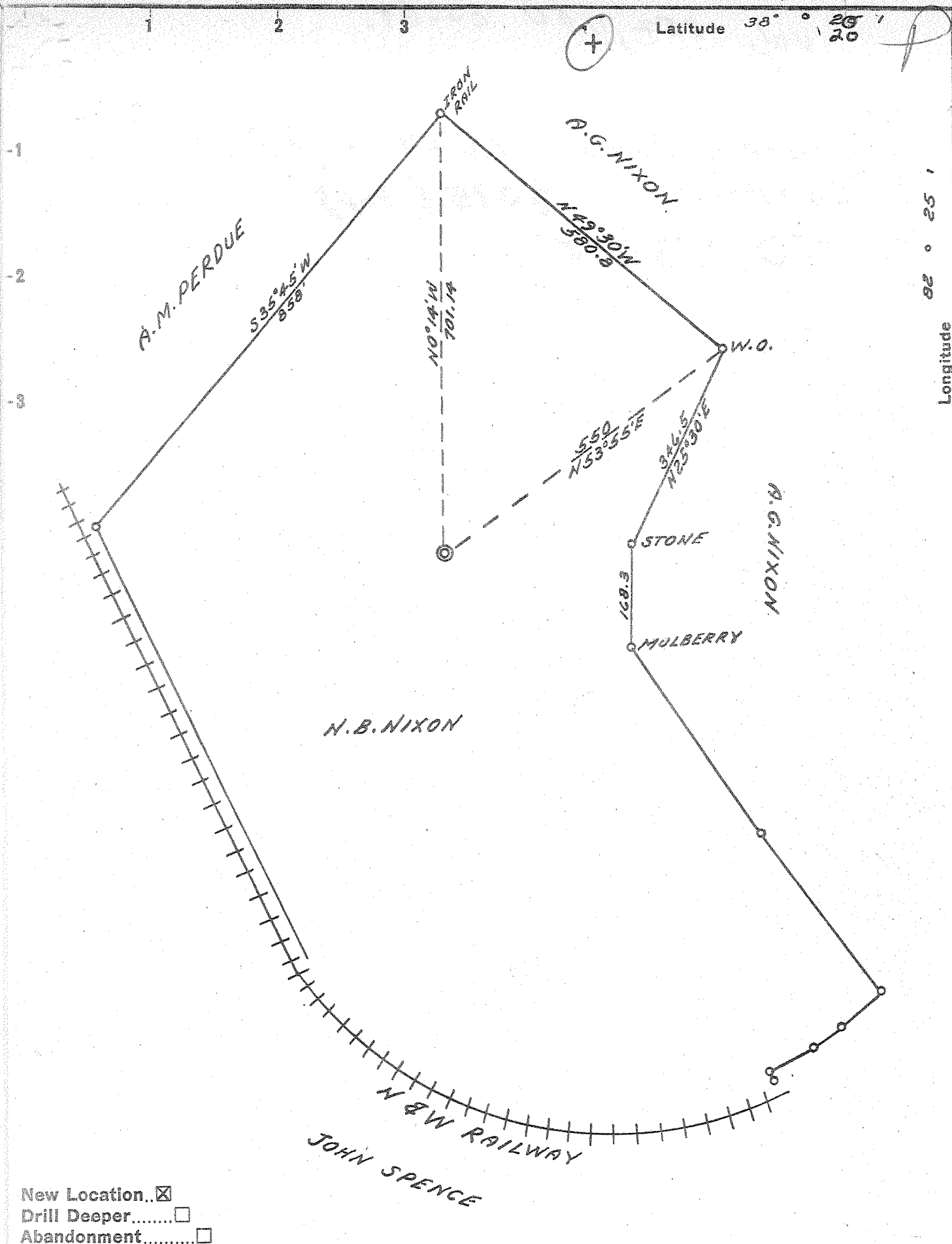


Latitude 38° 26' 20"



Longitude 82° 25'

- New Location..
- Drill Deeper.....
- Abandonment.....

Company NORMAN GAS COMPANY  
 Address 916 - 5TH AVE HUNTINGTON, W.VA.  
 Farm N.B. NIXON  
 Tract \_\_\_\_\_ Acres 22 ± Lease No. \_\_\_\_\_  
 Well (Farm) No. 1 Serial No. \_\_\_\_\_  
 Elevation (Spirit Level) 662  
 Quadrangle GUYANDOT SW  
 County WAYNE District Union  
 Engineer T.J. Banting  
 Engineer's Registration No. 439  
 File No. \_\_\_\_\_ Drawing No. \_\_\_\_\_  
 Date JAN. 20, 1955 Scale 1" = 200'

STATE OF WEST VIRGINIA  
 DEPARTMENT OF MINES  
 OIL AND GAS DIVISION  
 CHARLESTON

**WELL LOCATION MAP**  
 FILE NO. WAY-955

+ Denotes location of well on United States Topographic Maps, scale 1 to 62,500, latitude and longitude lines being represented by border lines as shown.

- Denotes one inch spaces on border line of original tracing.

6-6 229

Deep well



O. 30 S. 38° 20'  
 2.85 W. 82° 25'

P

STATE OF WEST VIRGINIA  
 DEPARTMENT OF MINES  
 OIL AND GAS DIVISION

*Guyardot*

Quadrangle ~~SHAND~~  
 Permit No. WAY-955

WELL RECORD

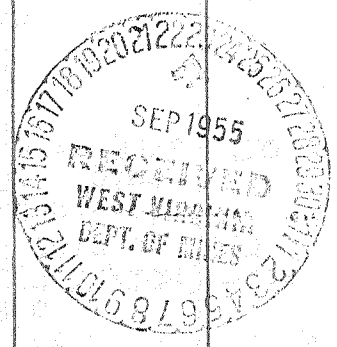
Oil or Gas Well Gas  
 (KIND)

Company Norman Gas Company  
 Address Hines Bldg Room 312 Hgtn W Va  
 Farm Norman Nixon Acres 22  
 Location (waters) Twelve Pole Creek  
 Well No. One Elev. 662'  
 District Union County WAYNE  
 The surface of tract is owned in fee by Norman Nixon  
 Address Shoals W Va  
 Mineral rights are owned by Same  
 Address \_\_\_\_\_  
 Drilling commenced March 31 1955  
 Drilling completed May 25 1955  
 Date Shot May 28 From 3105 To 2550  
 With Gelefin  
 Open Flow 13 /10ths Water in 2" Inch  
 \_\_\_\_\_ /10ths Merc. in \_\_\_\_\_ Inch  
 Volume 152000 Cu. Ft.  
 Rock Pressure 425 lbs. \_\_\_\_\_ hrs.  
 Oil None bbls., 1st 24 hrs.  
 Fresh water 98 feet \_\_\_\_\_ feet  
 Salt water 1015' feet Hole Full feet

Casing and Tubing	Used in Drilling	Left in Well	Packers
Size			Kind of Packer
16			
13			
10 26'6"		26'6"	Size of
8 3/4 305'		305'	
6 5/8 1230'		Pulled	Depth set
5 3/16 2086'		2086'	<u>Shoe</u>
3			Perf. top
2 2863'		2863'	Perf. bottom
Liners Used			Perf. top
<u>Comb. and Hook Wall 2" Pac</u>			Perf. bottom

CASING CEMENTED None SIZE \_\_\_\_\_ No. Ft. \_\_\_\_\_ Date \_\_\_\_\_  
 COAL WAS ENCOUNTERED AT None FEET \_\_\_\_\_ INCHES  
 \_\_\_\_\_ FEET \_\_\_\_\_ INCHES FEET \_\_\_\_\_ INCHES  
 \_\_\_\_\_ FEET \_\_\_\_\_ INCHES FEET \_\_\_\_\_ INCHES

Formation	Color	Hard or Soft	Top	Bottom	Oil, Gas or Water	Depth Found	Remarks
Surface			0	2			
Soap Stone			2	30			
Sand			30	35			
Slate			35	75			
Red Rock			75	95			
Sand			95	118			
Black Slate			118	120			
Red Rock			120	127			
Slate & Shells			127	263			
Slate, White			263	276			
Sand			276	294			
Slate, White			294	346			
Dark Slate			346	350			
Sand			350	388			
Slate, White			388	465			
Sand			465	484			
Slate			484	583			
Sand			583	611			
Slate			611	632			
Sand			632	688			
Slate			688	740			
Sand			740	808			
Slate			808	968			
Sand			968	992			
Slate			992	998			
Sand			998	1073			
Slate			1073	1079			
Sand			1079	1100			
Slate Black			1100	1166			
Maxon Sand			1166	1185			
Slate			1185	1192			
Sand Lime			1192	1226			
Big Lime			1226	1394			
Injun Sand			1394	1490			
Slate Shells			1490	1947			



Dept Meter Reading for 7"  
 Casing point 1,230 ft  
 Show of Gas 1419 in Unjun Sand  
 Gas at 1454

Dept Meter reading 26 Apr 1947

(Over)

Deep Well

Formation	Color	Hard or Soft	Top $\frac{1}{2}$	Bottom	Oil, Gas or Water	Depth Found	Remarks
Coffee Shale			2004	2024	Increase of water	1530	
Burear Sand			2024	2037	Show of gas	2026	
Slate			2037	2040	Dept Meter reading for 5"		
Shell			2040	2057	Casing 2086 Sand line 2081		
Slate			2057	2070	Show gas 2800	4/10 w 3/8 pipe	
Shell			2070	2098			
Slate & Shells			2098	2118			
Black Shale			2118	2227			
Slate & Shells			2227	2357	Packer Shell 2233 to 2239		
Slate Dark			2357	2369			
Slate Dark			2369	2379	Show of gas 2800	4/10" 3/8 pipe	
Slate White			2379	2423	Sandy Lime		
Slate Dark			2423	2527	Gas at 2832	12/10" pipe	
Slate White			2527	2546	Hard from 2819 to 2830		
Shale light			2546	2644	2862	1 1/2" w 1/2" pipe	
Slate light			2644	2674	2977	2/10" w 1 pipe	
Shale brown			2674	2740	2/10 increase	3052 4/10 w 1 pipe	
Shale brown							
Slate white			2740	2772			
Slate brown			2772	2868			
Slate white			2868	3050	May 25th		
Shale brown			3050	3095	Dept Meter Ran To Bottom of		
Gornif Lime			3095		Hole 3105		
					Gas test 3/10 water 1"	5/25/55	
					2" combination Hook & Wall Packer		
					Neck measurement 3 1/2"	Length 6'	
					Dept Meter May 30,	2873	

Date \_\_\_\_\_, 19\_\_\_\_

APPROVED \_\_\_\_\_, Owner