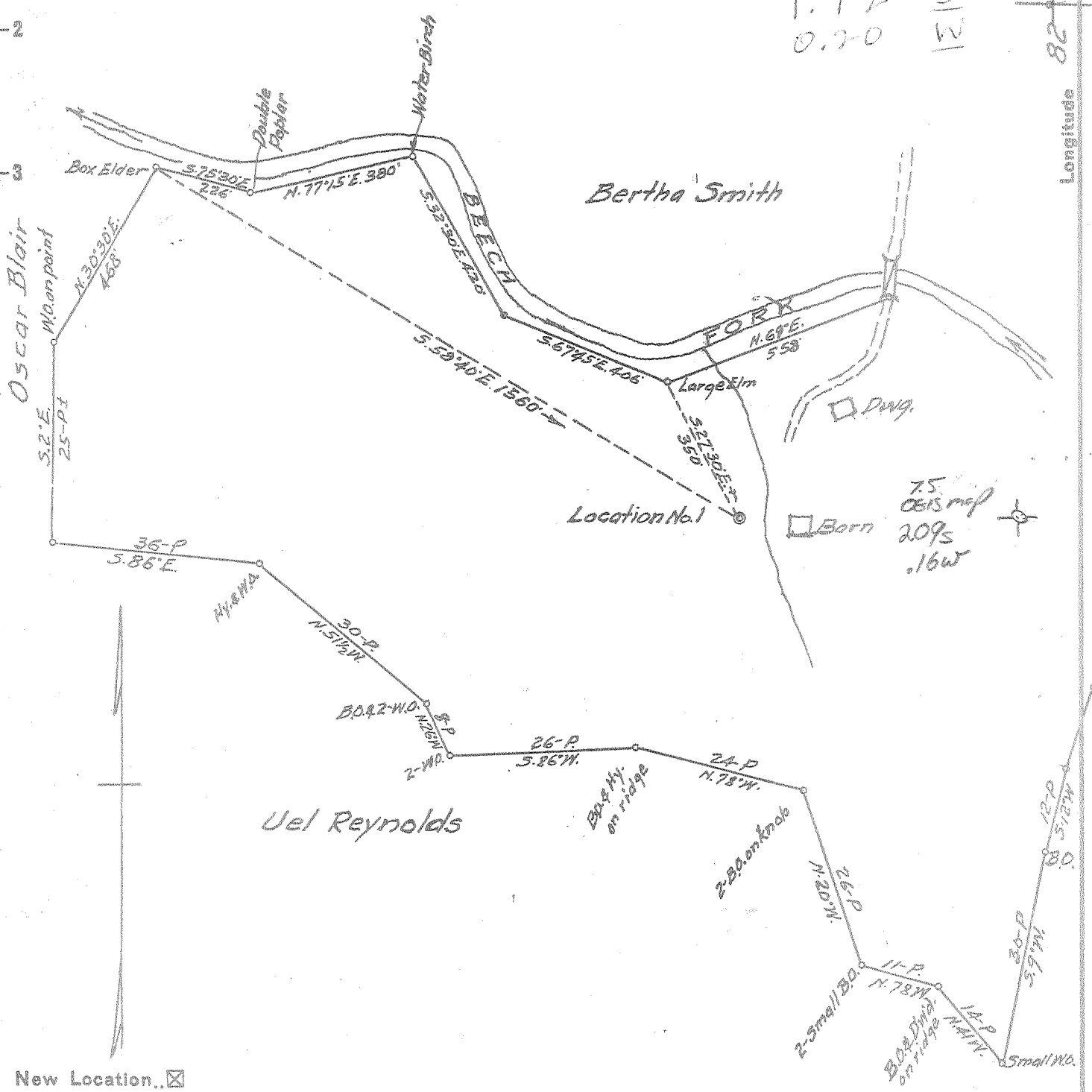


Latitude 38° 20' P

Longitude 82° 25'

1.92 S  
0.70 W



- New Location...
- Drill Deeper.....
- Abandonment.....

Company E. L. LUSHER  
 Address KENOVA, W. VA.  
 Farm FRANK SMITH  
 Tract \_\_\_\_\_ Acres 60 Lease No. \_\_\_\_\_  
 Well (Farm) No. 1 Serial No. \_\_\_\_\_  
 Elevation (Spirit Level) 580  
 Quadrangle GUYANDOT SW  
 County WAYNE District UNION  
 Engineer G. E. Ewing  
 Engineer's Registration No. 309  
 File No. \_\_\_\_\_ Drawing No. \_\_\_\_\_  
 Date 10-25-54 Scale 1"=330'

STATE OF WEST VIRGINIA  
 DEPARTMENT OF MINES  
 OIL AND GAS DIVISION  
 CHARLESTON

**WELL LOCATION MAP**

FILE NO. WAY-945

*not needed*

+ Denotes location of well on United States Topographic Maps, scale 1 to 62,500, latitude and longitude lines being represented by border lines as shown.

- Denotes one inch spaces on border line of original tracing.

60 250

Deep Well



STATE OF WEST VIRGINIA  
DEPARTMENT OF MINES  
OIL AND GAS DIVISION

WELL RECORD

*Guyardot*  
Permit No. Way-945

Oil or Gas Well Oil  
(MINE)

Company E. L. Lusher  
Address Kenova, W. Va. Route 1  
Farm Frank Smith Acres 100  
Location (waters) Beech Fork  
Well No. 1 Elev. 580  
District Union County Wayne  
The surface of tract is owned in fee by Frank Smith  
Lavalette Address \_\_\_\_\_  
Mineral rights are owned by Same  
Address \_\_\_\_\_  
Drilling commenced Nov. 10, 1954  
Drilling completed Jan. 21, 1955  
Date Shot 2/8/55 From 3247 To 2623  
With 5833 1/3 lbs. Gellatin  
Open Flow 6 /10ths Water in 1 Inch  
/10ths Merc. in \_\_\_\_\_ Inch  
Volume 29 M Cu. Ft.  
Rock Pressure \_\_\_\_\_ lbs. \_\_\_\_\_ hrs.  
Oil \_\_\_\_\_ bbls., 1st 24 hrs.  
Fresh water 100 feet \_\_\_\_\_ feet  
Salt water 920 feet \_\_\_\_\_ feet

Casing and Tubing	Used in Drilling	Left in Well	Packers
Size			Kind of Packer
16			
18	<u>34-4</u>	<u>34-4</u>	
10	<u>155-4</u>	<u>155-4</u>	Size of
8 3/4	<u>1273-2</u>	<u>-----</u>	
6 3/4	<u>2104-8</u>		Depth set
5 3/16			
3			Perf. top
2			Perf. bottom
Liners Used			Perf. top
			Perf. bottom

CASING CEMENTED \_\_\_\_\_ SIZE \_\_\_\_\_ No. Ft. \_\_\_\_\_ Date \_\_\_\_\_  
COAL WAS ENCOUNTERED AT None FEET \_\_\_\_\_ INCHES  
\_\_\_\_\_ FEET \_\_\_\_\_ INCHES FEET \_\_\_\_\_ INCHES  
\_\_\_\_\_ FEET \_\_\_\_\_ INCHES FEET \_\_\_\_\_ INCHES

Formation	Color	Hard or Soft	Top	Bottom	Oil, Gas or Water	Depth Found	Remarks
Surface			0	37			
Bro Sand			37	60			
late			60	200			
ed Rock			200	205			
late Shells			205	330			
late			330	345			
oal			345	450			
lack Slate			450	465			
and			465	490			
late			490	503			
and			503	523			
late			523	670			
and			670	720			
late			720	760			
late & Shells			670	812			
ate			812	890			
late Sand			890	1048			
late & Shells			1048	1096			
axon			1096	1170			
ime Sh			1170	1236			
late Green			1236	1240			
ig Lime			1240	1410			
late			1410	1415			
enner Sand			1415	1435			
late & Shells			1435	1475			
njun Sand			1475	1500			
late & Shells			1500	2050			
rown Shale			2050	2060			
regr Sand			2060	2072			
lack Slate			2072	2115			
ed Rock			2115	2150			
rown Shale			2150	2240			
hite Slate			2240	2420			
ight Shale			2420	2750			
hite Slate			2750	2765			
rown Shale			2765	3015			
hite Slate			3015	3183			
rown Shale			3183	3235			
onf. Lime			3235	-----			

*3235*  
*580*  
*-----*  
*2655*

731415  
1955  
MAY 11 1955  
MINE DIVISION  
STATE OF WEST VIRGINIA

Bottom of hole 3247 (Over) -----