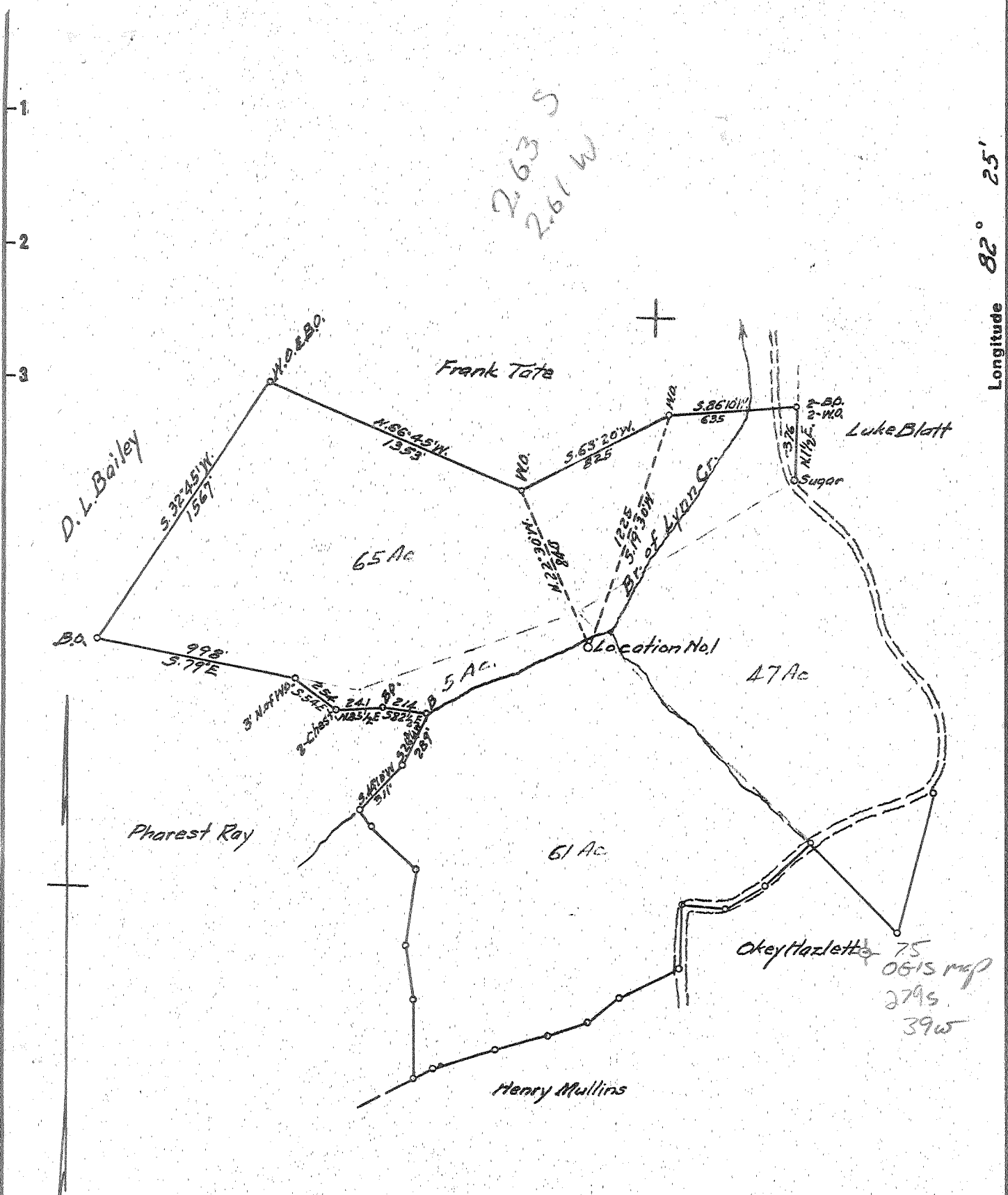


Latitude 36° 20'

Longitude 82° 25'

82° 27' 30"

7.63 S  
2.61 W



- New Location...
- Drill Deeper.....
- Abandonment.....

Company	<b>WEBSTER MYERS</b>		
Address	<b>HUNTINGTON, W. VA.</b>		
Farm	<b>O.M. PERDUE</b>		
Tract	Acres <b>178</b>	Lease No.	
Well (Farm) No.	<b>1</b>	Serial No.	
Elevation (Spirit Level)	<b>640</b>		
Quadrangle	<b>GUYANDOT SW</b>		
County	<b>WAYNE</b>	District	<b>UNION</b>
Engineer	<b>G. E. Ewing</b>		
Engineer's Registration No.	<b>309</b>		
File No.	Drawing No.		
Date	<b>1-21-54</b>	Scale	<b>1" = 660'</b>

STATE OF WEST VIRGINIA  
DEPARTMENT OF MINES  
OIL AND GAS DIVISION  
CHARLESTON

**WELL LOCATION MAP**  
FILE NO. WAY-906

+ Denotes location of well on United States Topographic Maps, scale 1 to 62,500, latitude and longitude lines being represented by border lines as shown.

-- Denotes one inch spaces on border line of original tracing.

Sample - MF 211 - (300-300) Dep Well

O. M. PERDUE NO. 1 WELL.

Union District, Wayne County, W. Va.

By Webster Myers, 1614 7th St., Huntington, W. Va.

Located 2.63 mi. S. of 38° 20' and 2.61 mi. W. of 82° 25' - SW - Guyandot  
Quadrangle.

Permit Way-906.

Elevation, 640' L.

Samples examined by Russell R. Flowers.

Record from Flowers July 7, 1954.

Top.	Bottom.	Thickness.	HELDERBERG FORMATION, 10+ FEET	
3210	- 3220	10	Limestone, light-gray to brownish-gray, some brownish-black, some dark-gray (shale), cherty	
3220	- 3245	25	No sample (GAYUGAN GROUP, 630? FEET)	
3245	- 3255	10	Limestone, light-gray to brownish-gray, highly dolomitic	
3255	- 3315	60	Not described	
3315	- 3335	20	Dolomite, dark yellowish brown to brownish-gray, some brownish-black, calcareous, somewhat cherty (oil and gas show, 3315-25')	
3335	- 3345	10	Dolomite, dark yellowish brown to brownish-gray and brownish-black; moderate amount of clear, coarsely crystalline gypsum and anhydrite	
3345	- 3355	10	Dolomite, as above, with a large amount of translucent to white gypsum and anhydrite	
3355	- 3807	452	Not described	
SIM?	3807	- 3820	13	Dolomite, brownish-gray to dark-gray and brownish-black, finely crystalline, some medium crystals (transparent); gas pay, 3817-3820'
3820	- 3829	9	Dolomite, brownish-gray to brownish-black, finely crystalline; some at top and a large amount at the bottom of transparent, medium to coarse, crystalline dolomite	
3829	- 3835	6	Dolomite, light- to medium-gray, some dark-gray, argillaceous, finely crystalline, sandy (very fine grained) and silty (coarse), some fine to medium (rounded) grains, slightly argillaceous	
3735	- 3852	17	Dolomite, brownish-gray, very fine to crystalline, very sandy (very fine grained); some light-gray, very fine grained, dolomitic sandstone at top	
3852	- 3865	13	Sandstone (very fine) to siltstone, light- to medium light gray, some medium-gray, highly dolomitic; some medium dark to dark-gray, silty shale at top and bottom	
3865	- 3875	10	Siltstone, medium-gray, dolomitic; shale, medium dark to dark-gray	



STATE OF WEST VIRGINIA  
DEPARTMENT OF MINES  
OIL AND GAS DIVISION 7

WELL RECORD

Permit No. WV 906

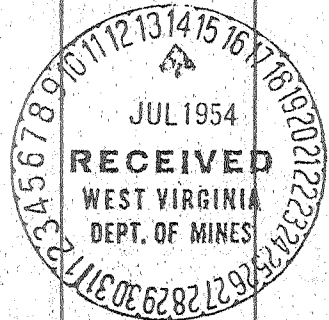
Oil or Gas Well Gas  
(KIND)

Company Webster Myers (Lynn Creek Gas Co.)  
Address 1614 7th Ave, Huntington, W. Va.  
Farm O.M. Perdue Acres 178  
Location (waters) Lynn Creek  
Well No. 1 Elev. 640  
District Union County Wayne  
The surface of tract is owned in fee by O.M. Perdue  
Dickinson, W. Va. Address \_\_\_\_\_  
Mineral rights are owned by Same Address \_\_\_\_\_  
Drilling commenced March 30, 1954  
Drilling completed June 25, 1954  
Date Shot not shot From \_\_\_\_\_ To \_\_\_\_\_  
With \_\_\_\_\_  
Open Flow 8/10ths Water in 2 Inch  
7/10ths Merc. in \_\_\_\_\_ Inch  
Volume 120 M Cu. Ft.  
Rock Pressure 950 lbs. 8 hrs.  
Oil \_\_\_\_\_ bbls., 1st 24 hrs.  
Fresh water 25 feet \_\_\_\_\_ feet  
Salt water 1195 feet \_\_\_\_\_ feet

Casing and Tubing	Used in Drilling	Left in Well	Packers
Size			Bottom Hole Anchor
18		31	Kind of Packer
19	154	31	7"x8 1/2"x16"
10			Size of
8 1/4	1229	Pulled	
6 3/4	2168	2168	Depth set 2146
5 3/16			3403
3	3890	3890	Perf. top 3870
2			Perf. bottom 5840
Liners Used	none		Perf. top
			Perf. bottom

CASING CEMENTED none SIZE \_\_\_\_\_ No. Ft. \_\_\_\_\_ Date \_\_\_\_\_  
COAL WAS ENCOUNTERED AT none FEET \_\_\_\_\_ INCHES \_\_\_\_\_  
FEET \_\_\_\_\_ INCHES FEET \_\_\_\_\_ INCHES  
FEET \_\_\_\_\_ INCHES FEET \_\_\_\_\_ INCHES

Formation	Color	Hard or Soft	Top	Bottom	Oil, Gas or Water	Depth Found	Remarks
Surface			0	15			
Slate			15	90			
Red Rock			90	140			
Slate			140	340			
Sand			340	360			
Slate			360	380			
Sand			380	390			
Hard Shell			390	395			
Slate			395	585			
Sand			585	625			
Slate			625	736			
Sand			736	750			
Slate			750	775			
Sand			775	785			
Slate			785	800			
Sand			800	825			
Slate			825	915			
Broken Sand			915	975			
Salt Sand (Some water)			975	1118			
Slate			1118	1195			
Water Sand			1195	1220			
White Slate			1220	1223			
Little Lime			1223	1242			
Pencil Cave			1242	1243			
Big Lime			1243	1395			
Injun Sand			1395	1510			
Slate			1510	1525			
Sand			1525	1532			
Slate			1532	1970			
Shell			1970	1995			
Slate			1995	2032			
Brown Shale			2032	2050			
Perea Sand			2050	2065			
Slate			2065	2068			
Shell			2068	2125			
White Slate			2125	2146			
Brown Shale			2146	2240			
Slate			2240	2412			



Over

Formation	Color	Hard or Soft	Top	Bottom	Oil, Gas or Water	Depth Found	Remarks
Brown Shale			2412	2560			
White Slate			2560	2620			
Brown Shale			2620	2690	16 MCF gas in Injun Sand		
Slate			2690	2735	at 1400 ft.		
Brown Shale			2735	2815	Show of oil and gas at 3325		
Slate			2815	2830	Gas at 3617 4/10 Water 1"		21 mcf
Brown Shale			2830	2920	Gas at 3820 8/10 water 2"		119 mcf
White Slate			2920	3100	Show of gas at 3848		
Brown Shale			3100	3140			
Corniferous Lime			3140	3665			
Lime Shells			3665	3817			
Big Six Sand			3817	3870			
Slate			3870	3875	Total depth		

Date July 13, 1954, 19

APPROVED \_\_\_\_\_, Owner  
 By *[Signature]*