

**#2394
MARION W. BURGESS "B"
86 ACRES**

OKLEY TALBERT
70A. SURF.

SERIAL # 879
ELEV. 784.44

5.56 S
3.61 W

7.5
0613 map
2.22 S
1.18 W

STATE OF WEST VIRGINIA
DEPARTMENT OF MINES
OIL AND GAS DIVISION
CHARLESTON

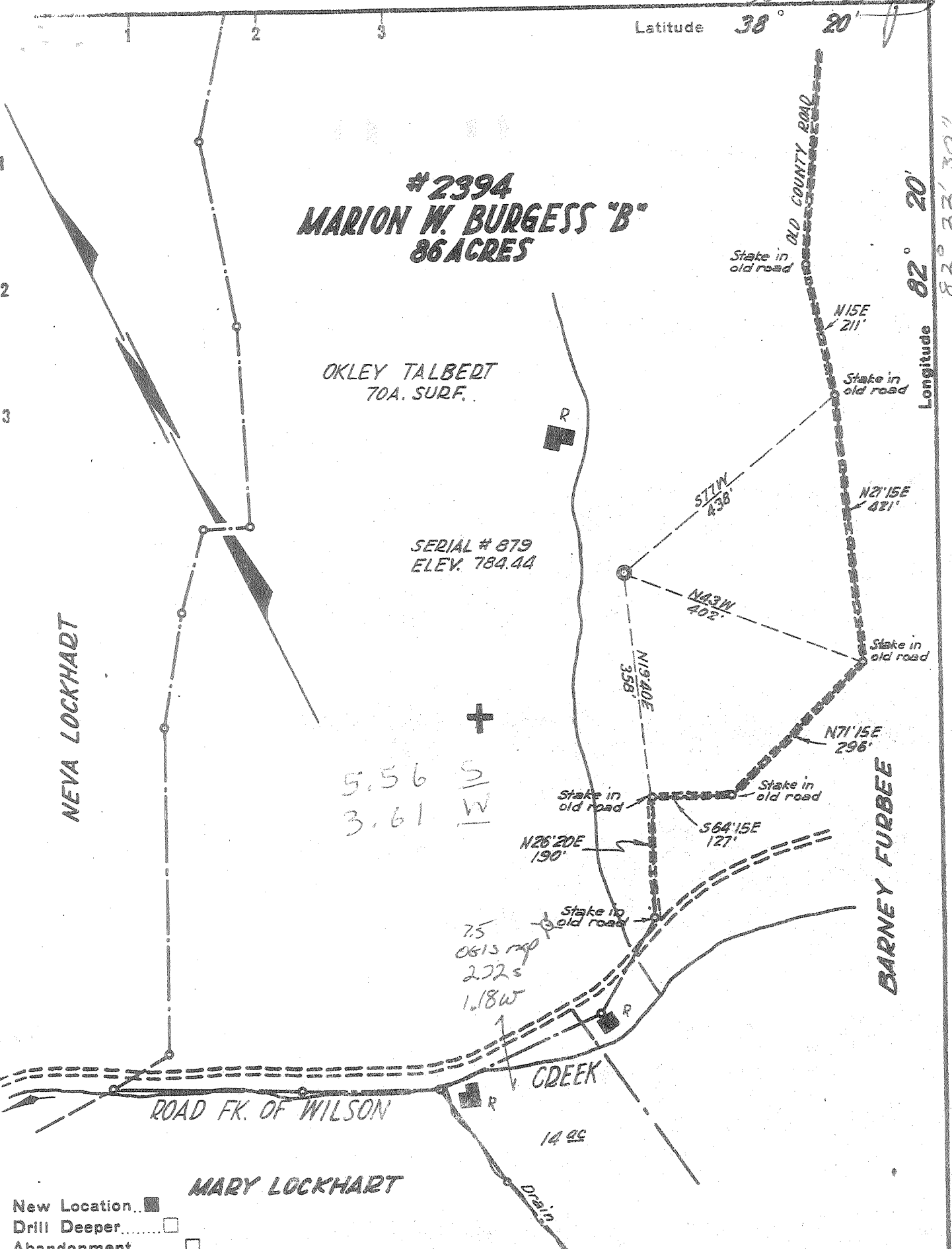
WELL LOCATION MAP
FILE NO. WAY - 874

+ Denotes location of well on United States Topographic Maps, scale 1 to 62,500, latitude and longitude lines being represented by border lines as shown.

- Denotes one inch spaces on border line of original tracing.

Company OWENS, LIBBEY-OWENS GAS DEPT.
Address BOX 4158 CHARLESTON W.VA.
Farm MARION W. BURGESS "B"
Tract _____ Acres 86 Lease No. 2394
Well (Farm) No. B-1 Serial No. 879
Elevation (Spirit Level) 784.44
Quadrangle GUYANDOT 8 S5.60° W3.66°
County WAYNE District UNION
Engineer T. S. FLOURNOY
Engineer's Registration No. 269
File No. _____ Drawing No. _____
Date MARCH 9, 1953 Scale 1" = 200'

New Location
Drill Deeper
Abandonment



Peep Well

STATE OF WEST VIRGINIA
DEPARTMENT OF MINES
OIL AND GAS DIVISION 8

Suzan dot

WELL RECORD

Oil or Gas Well Gas
(KIND)

Permit No. WAY-374

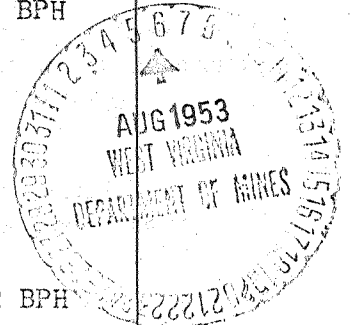
Company CWENS, LIBBEY-OWENS GAS DEPARTMENT
Address P. O. Box 4153, Charleston 4, W. Va.
Farm Marion Burgess "B" Acres 86
Location (waters) _____
Well No. 1 (Serial No. 379) Elev. 724-44
District Union County Wayne
The surface of tract is owned in fee by _____
Address _____
Mineral rights are owned by Marion Woods Burgess etals
309 Lock Lane Address Richmond, Virginia
Drilling commenced 5-22-53
Drilling completed 7-23-53
Date Shot 7-28-53 From 2329 To 3538
With 11,500 lbs. of Detonite.

Casing and Tubing	Used in Drilling	Left in Well	Packers
Size			
16			Kind of Packer "Oilwell"
18			Hookvall
10			Size of $3\frac{1}{2}$ " x 6-5/8"
$8\frac{1}{4}$ 5/8"	462' 6"	462' 6"	x 16
$6\frac{1}{2}$ 7"	1140' 11"	1149' 11"	Depth set 2240-2244
5 3/16			
3-1/2"		2244' 2"	Perf. top
2			Perf. bottom
Liners Used			Perf. top
			Perf. bottom

Open Flow /10ths Water in _____ Inch
/10ths Merc. in _____ Inch
Volume Br. Shale & Corniferous Lime 137 M Cu. Ft.
Rock Pressure 355 lbs. 46 hrs.
Oil _____ bbls., 1st 24 hrs.
Fresh water 90 feet 313 feet
Salt water 1034 feet _____ feet

CASING CEMENTED _____ SIZE _____ No. Ft. _____ Date _____
COAL WAS ENCOUNTERED AT 328 FEET 36 INCHES
_____ FEET _____ INCHES _____ FEET _____ INCHES
_____ FEET _____ INCHES _____ FEET _____ INCHES

Formation	Color	Hard or Soft	Top	Bottom	Oil, Gas or Water	Depth Found	Remarks
National Machine							
Surface			0	16			
Slate	Light	Soft	16	76			
Sand	Light	Med.	76	95	Water at 90	2 BPH	
Red Rock	Red	Soft	95	103			
Slate	Light	Soft	103	131			
Red Rock	Red	Soft	131	172			
Slate	Dark	Soft	172	188			
Slate	Light	Soft	188	202			
Sand	Light	Soft	202	242			
Slate	Light	Soft	242	279			
Sand	Light	Soft	279	284			
Slate	Light	Soft	284	328	Test at 313	2 BPH	
Coal	Black	Soft	328	331			
Sand	Light	Med.	331	356			
Slate	Light	Soft	356	466	SIM 461 = Sand LM 457		
Sand	White	Soft	466	517	Ran 3-5/8" csg. at 461,		Shoe on
Sand-broken	Dark	Soft	517	567	bottom.		
Slate	Dark	Soft	567	601	SIM 567 = Sand LM 567		
Sand	Light	Soft	601	621			
Slate	Dark	Soft	621	641			
Sand	Light	Soft	641	679			
Slate	Light	Soft	679	727			
Slate	Dark	Soft	727	792			
Sand	Light	Soft	792	815			
Slate	Dark	Soft	815	825			
Sand	Light	Soft	825	912			
Slate	Dark	Soft	912	967			
Sand	Light	Med.	967	997			
Sand	White	Soft	997	1046	Water at 1034, hole filling		
Sand	Light	Med.	1046	1068			
Sand	White	Soft	1068	1169	Water level 250' at 1169'		
Sand	White	Med.	1169	1247	SIM 1169 = Sand LM 1165		
Sand	Light	Soft	1247	1362			
Slate	Dark	Soft	1362	1368			
Line Shell	Grey	Hard	1368	1380			



(over)

(Over)

Formation	Color	Hard-Soft	Top	Bottom	Oil, Gas or Water	Depth Feet	Remarks
			8				
Slate	Light	Soft	1330	1305	Water level	250' at 1330	
Sand	Light	Med.	1335	1407			
Little Lime	Dark	Hard	1407	1427			
Pencil Cave	Dark	Hard	1427	1430	SIM 1430 = Sand LM 1430		
Big Lime	Light	Hard	1430	1616	Ran 7" csg. on shoe at 1449 ft.		
Big Injun	Grey	Med.	1616	1636	SIM 1449 = Sand LM 1447		
					Fished for bit at 1466		
					Show of gas at 1516		
					Show of oil at 1516		
					SIM 1516 = Sand LM 1516		
					SIM 1660 = Sand LM 1657		
Big Injun	Grey	Soft	1686	1711			
Big Injun	Grey	Med.	1711	1728			
Sl.&Shells	Dark	Soft	1728	1733	Shut down at 1733 & tested 24 hrs.		
Sl.&Shells	Grey	Med.	1733	1753	Big Injun Sand making 6 gal. per hr.		
Sl. & Shells	Black	Med.	1753	1781			
Sl. & Shells	Dark	Soft	1781	1943			
Sl.&Shells	Light	Med.	1943	2037			
Sl.&Shells	Light	Soft	2037	2058			
Shell	Grey	Hard	2058	2068			
Slate	White	Soft	2068	2093			
Sl.&Shells	Light	Med.	2093	2180	SIM 2180 = Sand LM 2177		
Slate	Light	Med.	2180	2213	Tested for water at 2228, BI		
Shale	Brown	Soft	2213	2228	making about 3 gal. per hour.		
Berea Sand	Grey	Hard	2228	2244	Oil 2235-40, Show		
Slate	Grey	Soft	2244	2247			
Shell	Grey	Hard	2247	2251			
Slate	Black	Med.	2251	2264			
Sl.&Shells	Light	Soft	2264	2278			
Sl.&Shells	Light	Med.	2278	2282			
Slate	Light	Soft	2282	2285	Test of water at 2304 feet.		
Sl.&Shells	Light-	Soft	2285	2333	about 2 gal. per hour.		
Br. Shale	Brown	Med.	2333	2406			
Sl.&Shells	Light	Soft	2406	2413			
Slate	White	Soft	2413	2553	SIM 2553 = Sand LM 2552		
					Tested Big Injun water before starting		
					up after week-end, 73 gal. in 48 hrs. =		
					1-1/2 gal. per hr.		
Slate	White	Med.	2553	2592			
Sl.&Shells	White	Soft	2592	2630			
Slate	White	Soft	2630	2686			
Sl.&Shells	Light	Soft	2686	2698			
Br. Shale	Brown	Soft	2698	2762			
Slate	White	Soft	2762	2797			
Br. Shale	Brown	Soft	2797	3072	SIM 3072 = Sand LM 3074		
					After 48 hour shut-down over weekend,		
					found 2/3 bbl. water in hole		
Br. Shale	Brown	Soft	3072	3164			
Slate	White	Soft	3164	3378			
Br. Shale	Brown	Soft	3378	3412			
Shell	Dark	Hard	3412	3419	SIM 3414 = Sand LM 3414		
Br. Shale	Brown	Soft	3419	3434	Show of gas at 3429-36 (2/10 W-1/8" = 173		
					c.f.)		
Shell	Dark	Hard	3434	3438	Show of oil at 3429-36, scum on water		
Corniferous	L. Dark	Hard	3438	3467	Test at 3442 = 173 c.f.		
"	" White	Hard	3467	3481	SIM 3467 = Sand LM 3467		
Gritty "	" White	Hard	3481	3483			
"	" Grey	Hard	3483	3484	At 3528', Stem showed oily - but no oil		
"	" White	Hard	3484	3539	was present in cuttings - probably from		
					Berea Sand.		
					Test 3539, only enough gas to shake		
					water in 1/8 inch plate.		
		Total Depth		3539			
	T. D. After Shot			3539			
			3438				
			784				
			2654				
					Shot 7-23-53		
					Before Shot: zero. 26 hours after: 137W		

Date August 5, 1953

APPROVED _____, Owner

By _____ (Title) Geolo