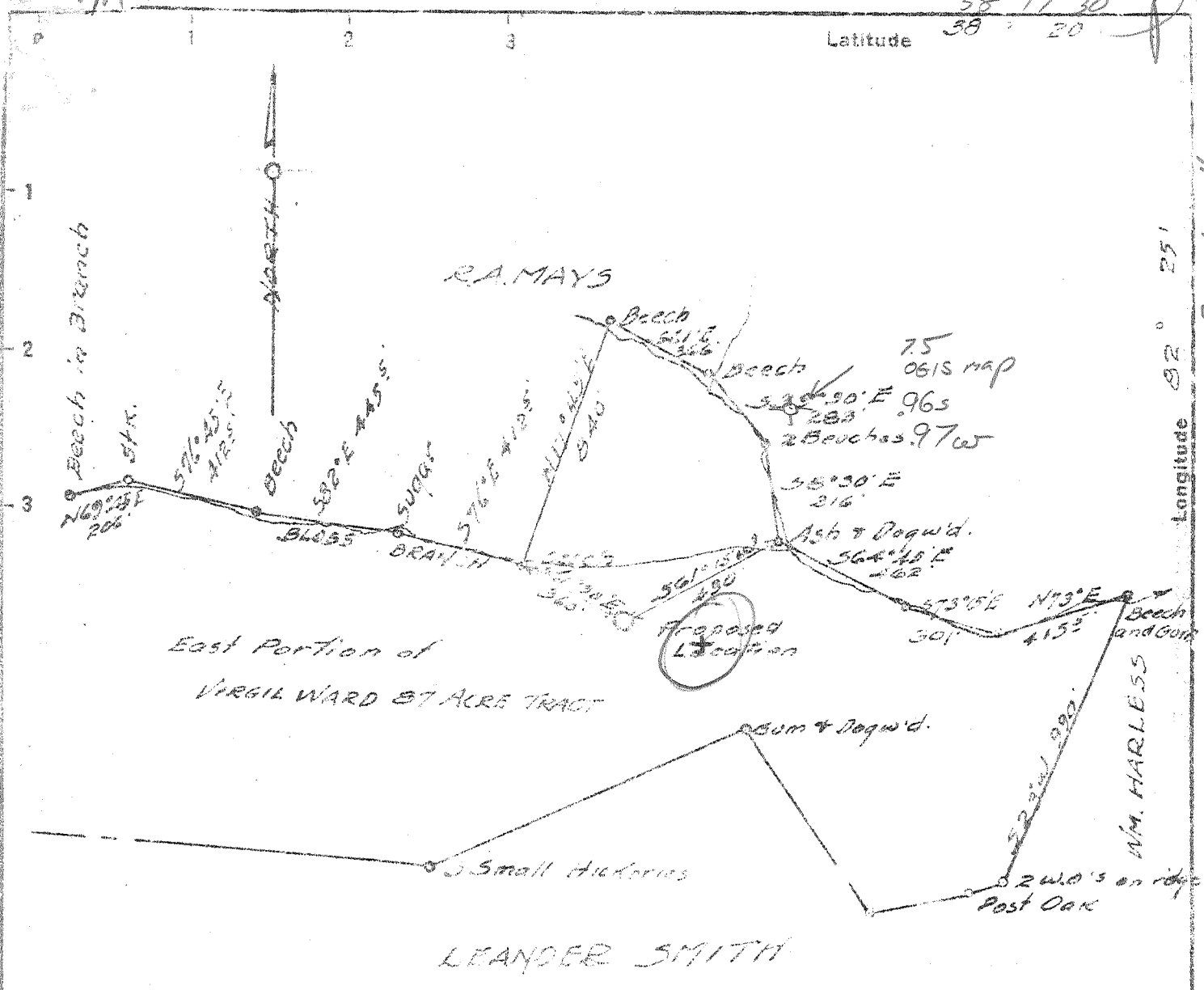


Latitude 38° 17' 30" / 38° 20"



Longitude 82° 25' / 82° 27' 30"

4.05 S  
3.14 W  
3

New Location   
 Drill Deener   
 Abandonment

Company Clifford Mills P.A. Co.  
 Address Wayne, W. Va.  
 Farm Virgil Ward  
 Tract \_\_\_\_\_ Acres 27 Lease No. \_\_\_\_\_  
 Well (Farm) No. 1 Serial No. \_\_\_\_\_  
 Elevation (Spirit Level) 670  
 Quadrangle Guyandot SW  
 County Wayne District Union  
 Engineer Paul A. Duncanson  
 Engineer's Registration No. 4169  
 File No. \_\_\_\_\_ Drawing No. \_\_\_\_\_  
 Date 3-6-50 Scale 1" = 500'

STATE OF WEST VIRGINIA  
 DEPARTMENT OF MINES  
 OIL AND GAS DIVISION  
 CHARLESTON

WELL LOCATION MAP  
 FILE NO. WAY-711

+ Denotes location of well on United States Topographic Maps, scale 1 to 62,500, latitude and longitude lines being represented by border lines as shown.  
 - Denotes one inch spaces on border line of original tracing.

6-6 230 Deep Well

WEST VIRGINIA DEPARTMENT OF MINES  
OIL & GAS DIVISION  
W E L L R E C O R D

Permit No. Way-717  
Guyandot

Gas Well

CASING & TUBING

Company	Clifford Mills & al			
Address	Wayne, W. Va.		10	20
Farm	Vigil Ward Acres 87		8-1/4	224
Location	Blass Branch		6-5/8	1288
Well No.	One Elev. 670'		Liners	1288
District	Union County Wayne		Used	600
Surface	Virgil Ward			600
Mineral	Same			
Commenced	3/20/50			
Completed	5/4/50			
Shot	May 8 from 3155 to 2605 With Gelatin			
Volume	50,000 c.f.			
Rock Pressure	580 lbs. 6 days			
Fresh water	48 feet			
Salt water	970 feet			

Surface	Yellow	Soft	0	10	Oil	2075	small
Slate	Blue	"	10	42	Gas	2114	"
Sand	White	"	42	50	"	2645	"
Slate	Blue	"	50	80			
Red Rock	Red	"	80	90			
Slate	Blue	"	90	188			
Sand	White	"	188	210			
Slate	Blue	"	210	270			
Sand	White	"	270	435			
Slate	Blue	"	435	605			
Sand	White	"	605	680			
Slate	Blue	"	680	720			
Sand	White	"	720	760			
Slate	Blue	"	760	938			
Salt Sand	White	Hard	938	1035			
Slate	Blue	Soft	1035	1040			
Sand	White	Hard	1040	1102			
Slate & Shells	Blue	Soft	1102	1230			
Little Lime	Blue	Hard	1230	1244			
Break	Blue	Soft	1244	1246			
Big Lime	White	Hard	1246	1425			
Injun Sand	Blue	Soft	1425	1590			
Slate & Shells	Blue	Soft	1590	1950			
Lime Shell	Blue	Hard	1950	1970			
Slate	Blue	Soft	1970	1980			
Shell	Blue	Hard	1980	2000			
Slate	Blue	Soft	2000	2048			
B. Shale	Brown	Soft	2048	2072			
Berea Sand	Grey	Hard	2072	2102			
Slate & Shells	Blue	Soft	2102	2162			
B. Shale	Brown	Soft	2162	2256			
Slate & Shells	Blue	Soft	2256	2379			
Lime Shell	Blue	Hard	2379	2395			
Slate	Blue	Soft	2395	2435			
Brown Shale	Brown	Soft	2435	2555			
Slate	Blue	Soft	2555	2605			
B. Shale	Brown	Soft	2605	2920			
Slate	Blue	Soft	2920	3115			
Brown Shale	Brown	Soft	3115	3154			
Coniferous	Black	Hard	3154	3155			