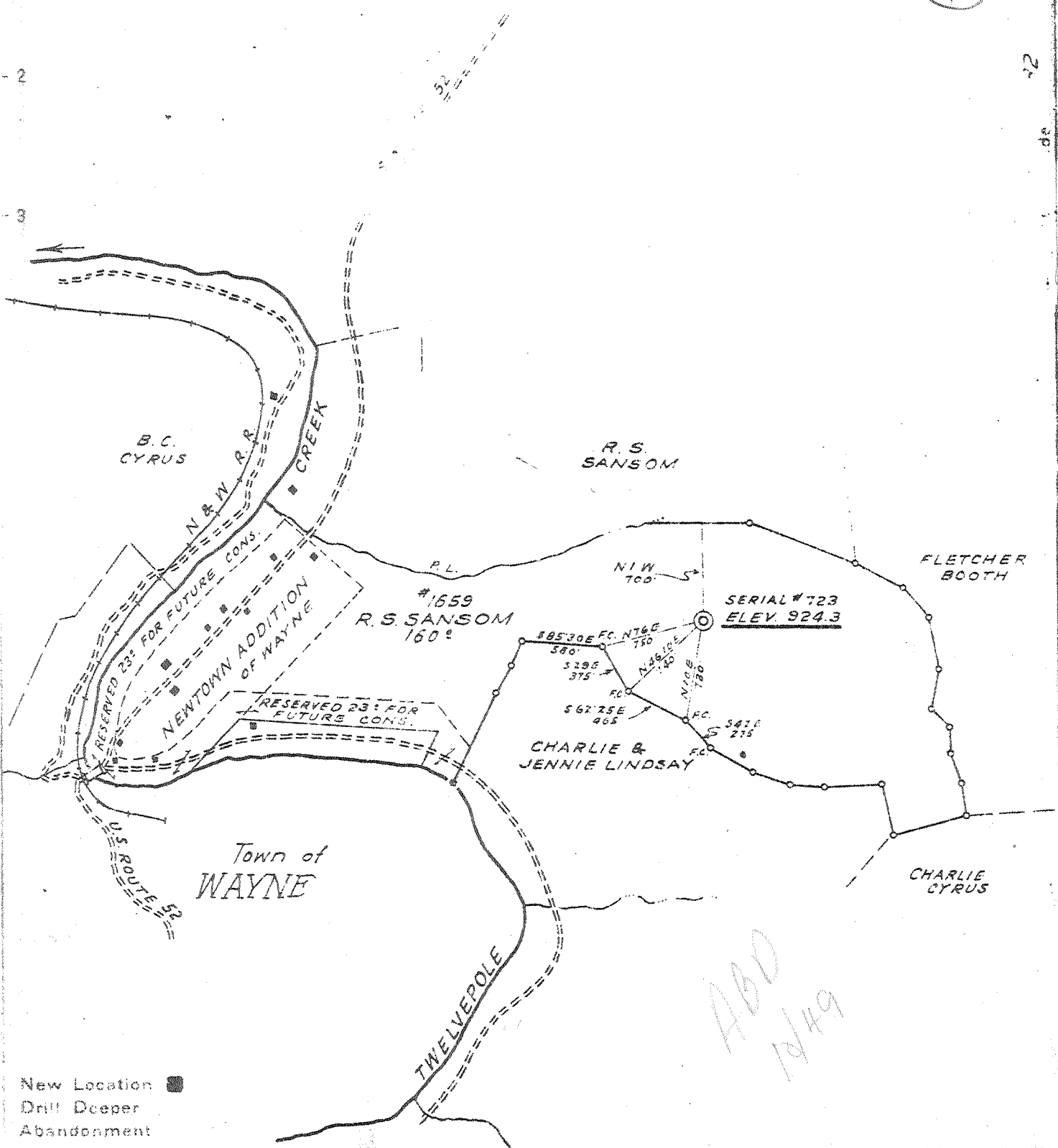




25
22
20



*ADD
1/14/49*

Company THE OWENS, LIBBEY-OWENS GAS DEPT.
 Address BOX 2111 CHARLESTON 28, W. VA.
 Farm R.S. SANSOM
 Tract _____ Acres 160 Lease No. 1659
 Well Farm No. ONE Serial No. 723
 Elevation (Spirit Level) 924.3
 Quadrangle WAYNE 3 S. 1.53" W. 0.75"
 County WAYNE District UNION
 Engineer T. S. Flournoy
 Engineer's Registration No. 269
 File No. _____ Drawing No. _____
 Date MAY 31, 1949 Scale _____

STATE OF WEST VIRGINIA
 DEPARTMENT OF MINES
 OIL AND GAS DIVISION
 CHARLESTON

WELL LOCATION MAP
 FILE NO. WAY-398

+ Denotes location of well on United States Topographic Map of scale 1:62,500. Latitude and longitude lines are represented by border lines as shown.

1/4 inch spaces on border line

IMPERIAL TRADING CLOTH
 4 1/2 x 11 1/2

Sansom 160 Acres (Drill on top of hill) **Deep Well**

WEST VIRGINIA DEPARTMENT OF MINES
OIL & GAS DIVISION
W E L L R E C O R D

Permit No. Way 398

Wayne County

Company The Owens, Libbey-Owens Gas Dept.
Address P.O. Box 2111, Charleston 28, W.Va.
Farm R.S. Sansom #1 Acres 160

Location

Well No. 723 Elev. 924.3

District Union Wayne County

Surface R.S. Sansom, Wayne, W.Va.

Mineral

Commenced 9-7-45

Completed 10-30-45

Date shot 10-30- Depth 2637 to 3373
with 7200# Detonite

Open fl w 22/10ths W 1 1/2" plate

Volume 83 MCF

Rock Pressure 504 lbs. 48 hrs.

Fresh Water 468-473

Salt Water 930; 984 Hole filling up

Gas Well

CASING & TUBING

8 5/8	382	382
7	1768	1768
3 1/2	3143	3143

O W Anchor Wall
Size 3 x 6 5/8 x 16
Depth 2128 - 2133

Perf. top	3086
" bot	3056
" top	2962
" bot	2993

Clay	Red	S	0	43	Slate & Shell	Dk	S	2600	2658
Slate	Wh	S	43	64	Brown Shale	Br	S	2658	2720
Clay	Red	S	64	140	Shell	Dk	M	2720	2740
Slate	Wh	S	140	170	Slate & Shell	Dk	M	2740	2756
Sand	Lt	S	170	201	Brown Shale	Br	S	2766	2855
Slate	Dk	S	201	243	Shale & Shell	Dk	S	2855	2961
Sand	Lt	S	243	258	Shale & Shell	Br	S	2961	3024
Slate	Dk	S	258	296	Shale	Br	S	3024	3093
Sand	Lt	S	296	316	Slate	Wh	S	3093	3297
Slate	Lt	S	316	349	Shale	Br	S	3297	3324
Sand	Wh	S	349	364	Shale & Shell	Br	S	3324	3352
Slate	Wh	S	364	379	Corniferous Lm	Dk	H	3352	3373
Sand	Lt	S	379	409	TOTAL DEPTH				3373
Slate	Lt	S	409	429	Gas 2195			3,970 C.F.	
Sand	Lt	S	429	540	Gas 3014			3,817 C.F.	
Slate	Dk	S	540	550					
Sand	Lt	S	550	701	Shot with 7200# Detonite			2637-3373	
Slate	Dk	S	701	713	Test B.S. 3 M				
Sand	Wh	S	713	733	15 Min A.S. 623 M				
Slate	Dk	S	733	748	1 hr. A.S. 230 M				
Sand	Wh	S	748	763	12 hr. A.S. 104 M				
Slate	Lt	S	763	838	24 hr. A.S. 89 M				
Sand	Lt	S	838	913	Test when tubed 83 M				
Slate	Lt	S	913	923					
Sand	Wh	S	923	1191					
Slate	Wh	S	1191	1197					
Sand	Wh	S	1197	1264					
Slate	Lt	S	1264	1268					
Sand	Wh	S	1268	1309					
Slate	Dk	S	1309	1315					
Shell	Lt	H	1315	1321					
Red Rock		S	1321	1326					
Slate	Dk	S	1326	1334					
Sand	Lt	H	1334	1356					
Slate	Dk	S	1356	1368					
Lime	Dk	H	1368	1384					
Slate	Lt	S	1384	1386					
Big Lime	Wh	H	1386	1575					
Big Injun	Gr	H	1575	1679					
Slate	Dk	S	1679	1684					
Sand	Gr	S	1684	1750					
Shell	Dk	H	1750	1774					
Slate & Shell	Dk	H	1774	1799					
Slate & Shell	Dk	S	1799	2108					
Shell	Dk	H	2108	2126					
Slate	Lt	S	2126	2143					
Slate	Dk	S	2143	2173					
Berea Sand	Gr	H	2173	2205					
Slate	Lt	M	2205	2215					
Shell	Lt	H	2215	2291					
Slate & Shell	Dk	S	2291	2318					
Shale	Dk	S	2318	2358					
Slate & Shell	Lt	S	2358	2600					

3352
924
2478

48 ho. rock pressure 504

268

273

124

1575
924
63

Gas 2195 3,970 C.F.