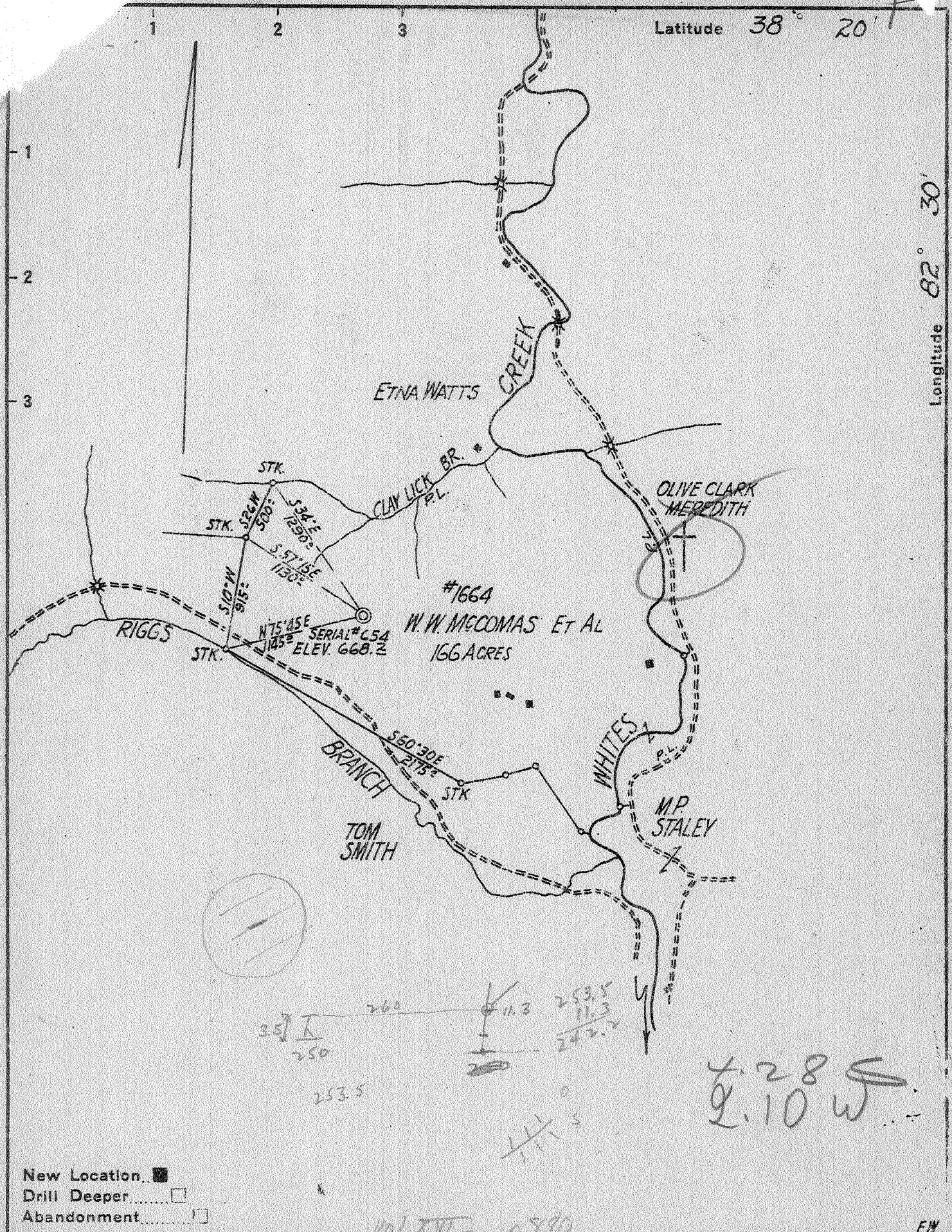


Latitude 38° 20'

Longitude 82° 30'



New Location

Drill Deeper

Abandonment

Company THE OWENS, LIBBEY-OWENS GAS DEPT.

Address BOX #111 CHARLESTON, W.VA.

Farm W. W. MCCOMAS ET AL

Tract          Acres 166 Lease No. 1664

Well (Farm) No. ONE Serial No. 654

Elevation (Spirit Level) 668.2

Quadrangle CEREDO SE

County WAYNE District CEREDO

Engineer T.S. FLOURNOY

Engineer's Registration No. 269

File No.          Drawing No.         

Date JANUARY 23, 1943 Scale 1" = 1000' T.

STATE OF WEST VIRGINIA  
DEPARTMENT OF MINES  
OIL AND GAS DIVISION  
CHARLESTON

**WELL LOCATION MAP**  
FILE NO. WAY - 277

+ Denotes location of well on United States Topographic Maps, scale 1 to 62,500, latitude and longitude lines being represented by border lines as shown.

- Denotes one inch spaces on border line of original tracing.

10-G  
Samples - MI - 128-155, 9579-4168  
Deets 8/11

W. W. McCOMAS NO. 1 (654) WELL.

Gereado District, Wayne County, W. Va.

By The Owens, Libbey-Owens Gas Dept., Charleston, W. Va.

Located 4.3 mi. S. of 38° 20' and 2.1 mi. W. of 82° 30' - SE - Gereado Quadrangle.

Elevation, 668.2' L.

Permit Way-277.

Commenced Aug. 2, 1943; completed Dec. 20, 1943.

Dry hole; plugged and abandoned.

Water, 45', 250', 2 bailers per hour; 485-504', hole filling up; water and oil, 1560', 10 gals. per hour; water, 3445', 2 gals. per hour.

Conductor, 14"; 10 $\frac{3}{4}$ " casing, 405'; 8 $\frac{3}{8}$ ", 1239'; 7", 2255'.

Section based on samples from 1208 to 1635' and 2029 to 2099', examined by J. H. C. Martens. Survey also has samples from 2374 to 4168'.

Record to RGT from Martens March 24, 1945.

Top. Bottom. Thickness.

1208 - 1223	15	Sandstone, white, fine
1223 - 1228	5	Shale, gray and green, soft, with siderite spherulites GREENBRIER LIMESTONE, 175 FEET
1228 - 1232	4	Limestone, light-brown, 60%; gray and green soft shale, 20%; siderite, 20%
1232 - 1403	171	Limestone, light-brown to nearly white POCONO FORMATION, 645 FEET
1403 - 1429	26	Siltstone, gray, highly calcareous and dolomitic (may belong with Greenbrier)
1429 - 1442	13	Siltstone, light-gray
1442 - 1457	15	Siltstone, and shale, gray
1457 - 1522	65	Siltstone, light-gray
1522 - 1608	86	Sandstone, light-gray, very fine; also a little shale and siltstone
1608 - 1635	27	Shale and siltstone, gray
1635 - 2029	394	No samples
2029 - 2041	12	Shale, very dark gray (Sunbury Shale; record gives "shale, 2027-2081")
2041 - 2048	7	Sandstone, nearly white, very fine, pyritic (Berea Sandstone, 2041-2057' in record) DEVONIAN SHALES, 965 FEET
2048 - 2099	51	Shale, gray, with some siltstone
3013		Top Corniferous Line in record
4168		Total depth



WEST VIRGINIA DEPARTMENT OF MINES  
OIL & GAS DIVISION  
W E L L R E C O R D

Permit No. Way 277  
Ceredo Quad.  
Company  
Address  
Farm  
Location  
Well No.  
District  
Surface  
Mineral  
Commenced  
Completed  
Volume  
Fresh Water

The Owens, Libbey-Owens Gas Dept.  
P.O. Box 2111, Charleston, 28, W.Va.  
W.W. McComas et al Acres 166  
Riggs Branch of Whites Creek  
654 Elev. 668.2'  
Ceredo Wayne County  
W.W. McComas et al, Whites Creek,  
Wayne Co., W.Va.  
Same  
July 28, 1943  
12/20/43  
Dry  
45'; 250' 2 bails per hr.; 485-504 Hole  
filling up  
3445' 2 gal. per hr.

Dry Hole  
CASING & TUBING

Cond. 14'  
10 405  
8 1/2 1239  
6 5/8 2255

Coal at 173' 36"

Surface	Lt	S	0	16	Slate	Gr	S	2818	2993	
Mud	Y	S	16	26	Shale	Br	S	2993	3013	
Sand	Gr	S	26	64	Corniferous	Dk	H	3013	3022	
Slate	Dk	S	64	103	Corniferous	Gr	H	3022	3201	
Slate	Lt	S	103	136	Corniferous	Dk	H	3201	3230	
Sand	Gr	S	136	173	Corniferous	Gr	H	3230	3244	
Coal	Bk	S	173	176	Corniferous	Dk	H	3244	3666	
Slate	Bk	S	176	241	Sand	Keifer	Gr	H	3666	3707
Sand	Gr	S	241	274	Slate	Dk	S	3707	3711	
Slate	Wh	S	274	334	Broken Lime	Dk	H	3711	3734	
Sand	Lt	S	334	349	Shells	Pink	S	3734	3755	
Slate	Gr	S	349	355	Slate & Shells	Dk	S	3755	3909	
Sand	Wh	S	355	405	Shell	Dk	H	3909	3915	
Slate	Lt	S	405	442	Slate & Shells	Dk	S	3915	3929	
Sand	Gr	S	442	405	Red Rock		S	3929	3943	
Settling Sand	Gr	S	485	504	Slate & Shells	Dk	S	3943	3973	
Sand	Wh	S	504	565	Shell	Lt	H	3973	3982	
Slate	Dk	S	565	629	Lime Shell	Dk	H	3982	3990	
Sand	Gr	H	629	651	Slate	Dk	S	3990	3994	
Slate	Dk	S	651	661	Shell	Dk	H	3994	4001	
Sand	Gr	S	661	693	Red Rock		S	4001	4011	
Slate	Wh	S	693	746	Slate	Dk	S	4011	4026	
Sand	Lt	S	746	769	Shell	Dk	H	4026	4038	
Slate	Dk	S	769	873	Slate	Dk	S	4038	4051	
Sand	Wh	S	873	909	Lime Shell	Dk	H	4051	4070	
Slate	Dk	S	909	1018	Slate & Shells	Dk	S	4070	4085	
Sand	Wh	S	1018	1090	Shell	Dk	H	4085	4090	
Slate	Wh	S	1090	1128	Slate	Dk	S	4090	4095	
Sand	Gr	H	1128	1166	Shells	Dk	H	4095	4105	
Slate	Dk	S	1166	1208	Slate & Shells	Dk	S	4105	4123	
Lime	Wh	H	1208	1216	Slate	Dk	S	4123	4136	
Sand	Lt	H	1216	1225	Lime	Dk	H	4136	4141	
Slate	Lt	S	1225	1230	Lime	R	H	4141	4168	
Big Lime	Wh	H	1230	1403	TOTAL DEPTH				4168	
Injun Sand	Gr	S	1403	1618						
Slate	Gr	S	1618	1715	Gas 480' 21 M					
Slate & Shells	Dk	S	1715	2027	Oil & Water 1560' 10 Gal. per hr.					
Shale	Br	S	2027	2041						
Berea Sand	Gr	H	2041	2057						
Slate	Dk	S	2057	2069						
Slate & Shells	Dk	S	2069	2091						
Slate & Shells	Wh	S	2091	2131						
Shale	Br	S	2131	2235						
Slate	Dk	S	2235	2373						
Shale	Br	S	2373	2393						
Slate	Dk	S	2393	2437						
Shale	Br	S	2437	2542						
Slate	Dk	S	2542	2596						
Shale	Br	S	2596	2621						
Slate	Gr	S	2621	2642						
Shale, broken	Br	S	2642	2688						
Slate & Shells	Br	S	2688	2718						
Slate	Gr	S	2718	2728						
Shale	Br	S	2728	2818						

4136  
668  
3468

3013  
668  
2345

1203  
668  
735

2041  
1230  
811