

New Location
 Drill Deeper
 Abandonment *lined 9-8-70*

Industrial Gas Corp.
 Company ~~THE OWENS-LIBBY-OWENS GAS DEPT.~~
 Address *BOX 1395 CHARLESTON W.VA., 25325*
 Farm *HOARD-BALDWIN*
 Tract _____ Acres *185* Lease No. *1459*
 Well (Farm) No. *27* Serial No. *640*
 Elevation (Spirit Level) *816.0*
 Quadrangle *WAYNE*
 County *WAYNE* District *Stonewall GRANT*
 Engineer *T.S. J. January*
 Engineer's Registration No. *289*
 File No. _____ Drawing No. _____
 Date *MAY 27, 1942* Scale *1" = 1000 FT.*

STATE OF WEST VIRGINIA
 DEPARTMENT OF MINES
 OIL AND GAS DIVISION
 CHARLESTON

WELL LOCATION MAP
 FILE NO. *WAY-269-P*

+ Denotes location of well on United States Topographic Maps, scale 1 to 62,500, latitude and longitude lines being represented by border lines as shown.

- Denotes one inch spaces on border line of original tracing.

"IMPERIAL" TRACING CLOTH
 K & E CO., N.Y.

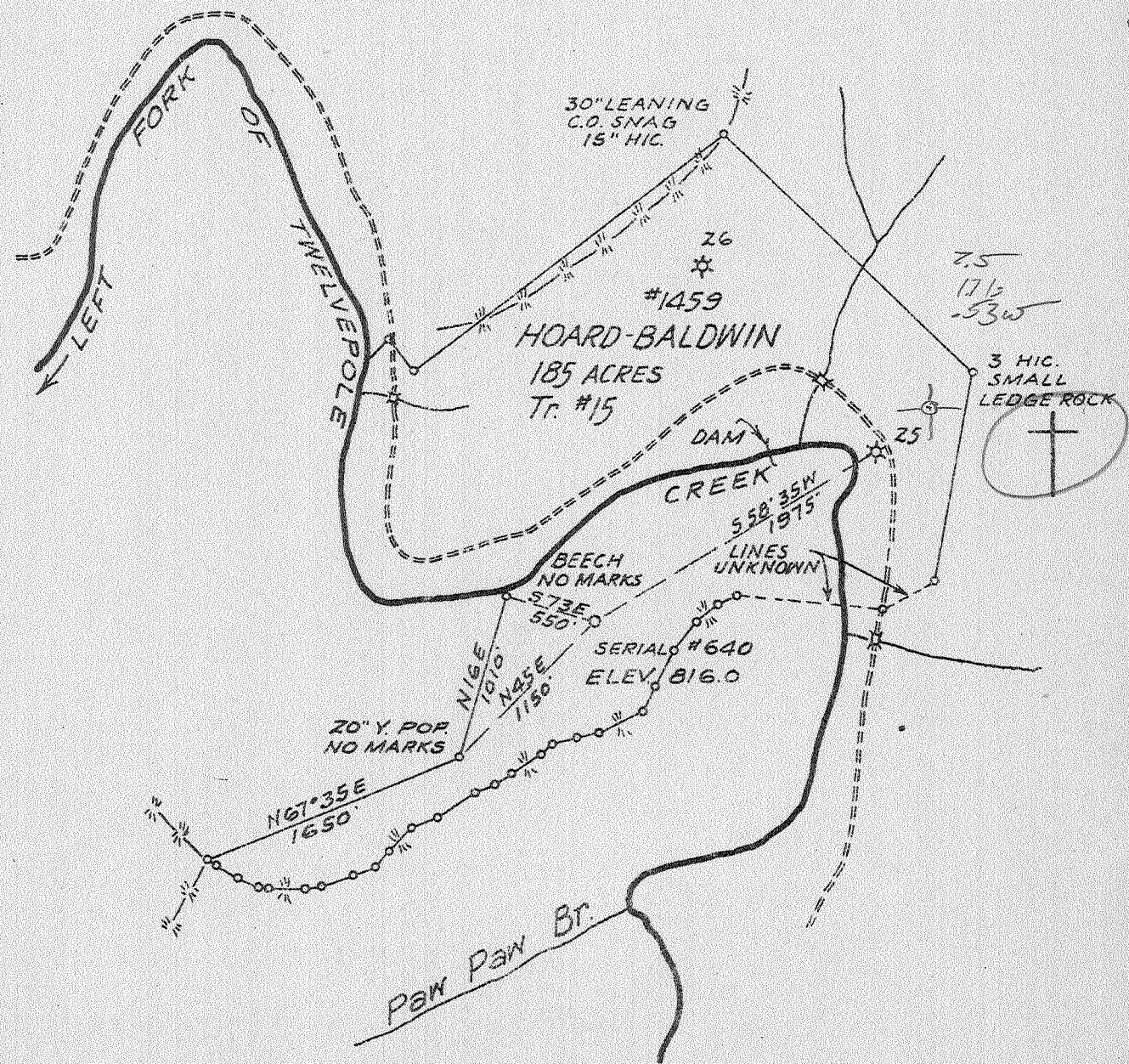
6-6-232

SEP 21 1970

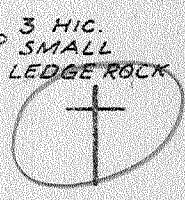
38° 7' 30"

Latitude 38° 10'

Longitude 82° 20'



2.5
17 1/2
-53W



4.63S
0.65W

Vol. XLV P. 675

- New Location
- Drill Deeper
- Abandonment

Company THE OWENS LIBBEY-OWENS GAS DEPT.
 Address BOX 1375 CHARLESTON W.VA.
 Farm HOARD-BALDWIN
 Tract _____ Acres 185 Lease No. 1459
 Well (Farm) No. 27 Serial No. 640
 Elevation (Spirit Level) 816.0
 Quadrangle WAYNE
 County WAYNE District GRANT
 Engineer T.S. Jamison
 Engineer's Registration No. 289
 File No. _____ Drawing No. _____
 Date MAY 27, 1942 Scale 1" = 1000 FT.

STATE OF WEST VIRGINIA
 DEPARTMENT OF MINES
 OIL AND GAS DIVISION
 CHARLESTON

WELL LOCATION MAP
 FILE NO. WAY-269

+ Denotes location of well on United States Topographic Maps, scale 1 to 62,500; latitude and longitude lines being represented by border lines as shown.

- Denotes one inch spaces on border line, of original tracing.

Deep Well

WEST VIRGINIA DEPARTMENT OF MINES
OIL & GAS DIVISION
W E L L R E C O R D

Permit No. Way 269	The Owens, Libbey-Owens Gas Dept.	Gas Well
Company	P.O. Box 2111, Charleston, W.Va.	CASING & TUBING
Address	Hoard-Baldwin Acres 5842	Wall Anchor OWS
Farm	Left Fork Twelvepole Creek	Packer
Location	640 Elev. 816'	Size 3x65/8x16
Well No	Grant Wayne County	Depth 1990-1996
District	John McClellan, Stillner, W.Va.	Perf. top 2857
Surface	The Owens, Libbey-Owens Gas Dept.	Perf. bot 2877
Oil & Gas	Box 2111, Charleston, W.Va.	Perf. top 2891
		Perf. bot 2911
Commenced	7-26-42	
Completed	9-7-42	Coal 108'---60"
Date Shot	9-6-42 Depth 2642 to 2936	137'---36"; 479'---48"
	with 2800# Detonite	
Volume	D.I. & Berea 18,000; Shale 39,000	
Rock Pressure	D.I. & Berea 430# 82 hrs.	
	Shale 622lbs. 82 hrs.	
Fresh Water	140' 1 bail pr. hr.;	
Salt Water	570' H.F.	

Surface	Y	S	0	10	Slate	Wh	S	2931	3151
Sand	Wh	S	10	45	Shale	Br	S	3151	3214
Slate	Wh	S	45	108	Shell	Dk	H	3214	3220
Coal	Dk	S	108	113	Shale	Br	S	3220	3253
Slate	Dk	S	113	137	Corniferous	Wh	H	3253	3256
Coal	Dk	S	137	140	TOTAL DEPTH	<i>Onondaga</i>			3256
Slate	Dk	S	140	180					
Sand	Wh	S	180	227	<u>Plugging Back</u>				
Slate	Dk	S	227	337	Cement			3246	3256
Slate	Wh	S	337	394	Permanent Bridge			2936	2983
Slate	Dk	S	394	479	Total Depth when tubed			2936	
Coal	Dk	S	479	483					
Slate	Dk	S	483	551	Gas 1386'	6,000 C.F.			
Salt Sand	Wh	S	551	759	Gas 1400'	10,000 C.F.			
Slate	Dk	S	759	771	Gas 1408'	23,000 C.F.			
Sand	Wh	S	771	1040	Gas 1957'	7,000 C.F.			
Slate	Dk	S	1040	1056	Gas 2804'	3,000 C.F.			
Sand	Wh	S	1056	1142					
Slate	Dk	S	1142	1145					
Little Limo	Dk	H	1145	1177					
Slate	Dk	S	1177	1179					
Big Limo	Wh	H	1179	1290					
Big Limo	Y	H	1290	1305					
Big Limo	Wh	H	1305	1323					
Big Limo	Y	H	1323	1339					
Big Limo	Wh	H	1339	1352					
Big Injun	Gr	H	1352	1429					
Slate & Shells	Gr	S	1429	1533					
Slate	Lt	S	1533	1626					
Slate & Shells	Gr	S	1626	1675					
Slate	Lt	S	1675	1844					
Slate & Shells	Gr	S	1844	1934					
Shale	Dk	S	1934	1949					
Berea Sand	Gr	H	1949	2003					
Slate	Lt	S	2003	2017					
Shells	Lt	H	2017	2023					
Slate	Dk	S	2023	2037					
Slate & Shells	Drk	S	2037	2088					
Slate	Gr	S	2088	2186					
Slate & Shells	Gr	S	2186	2285					
Slate	Lt	S	2285	2337					
Slate & Shells	Gr	S	2337	2388					
Slate	Gr	S	2388	2449					
Slate	Dk	S	2449	2476					
Slate	Gr	S	2476	2634					
Shale	Br	S	2634	2673					
Broken Shale	Dk	S	2673	2690					
Slate	Lt	S	2690	2720					
Shale	Br	S	2720	2869					
Shale & Shells	Br	S	2869	2911					
Shale	Br	S	2911	2931					

3253
816

2437