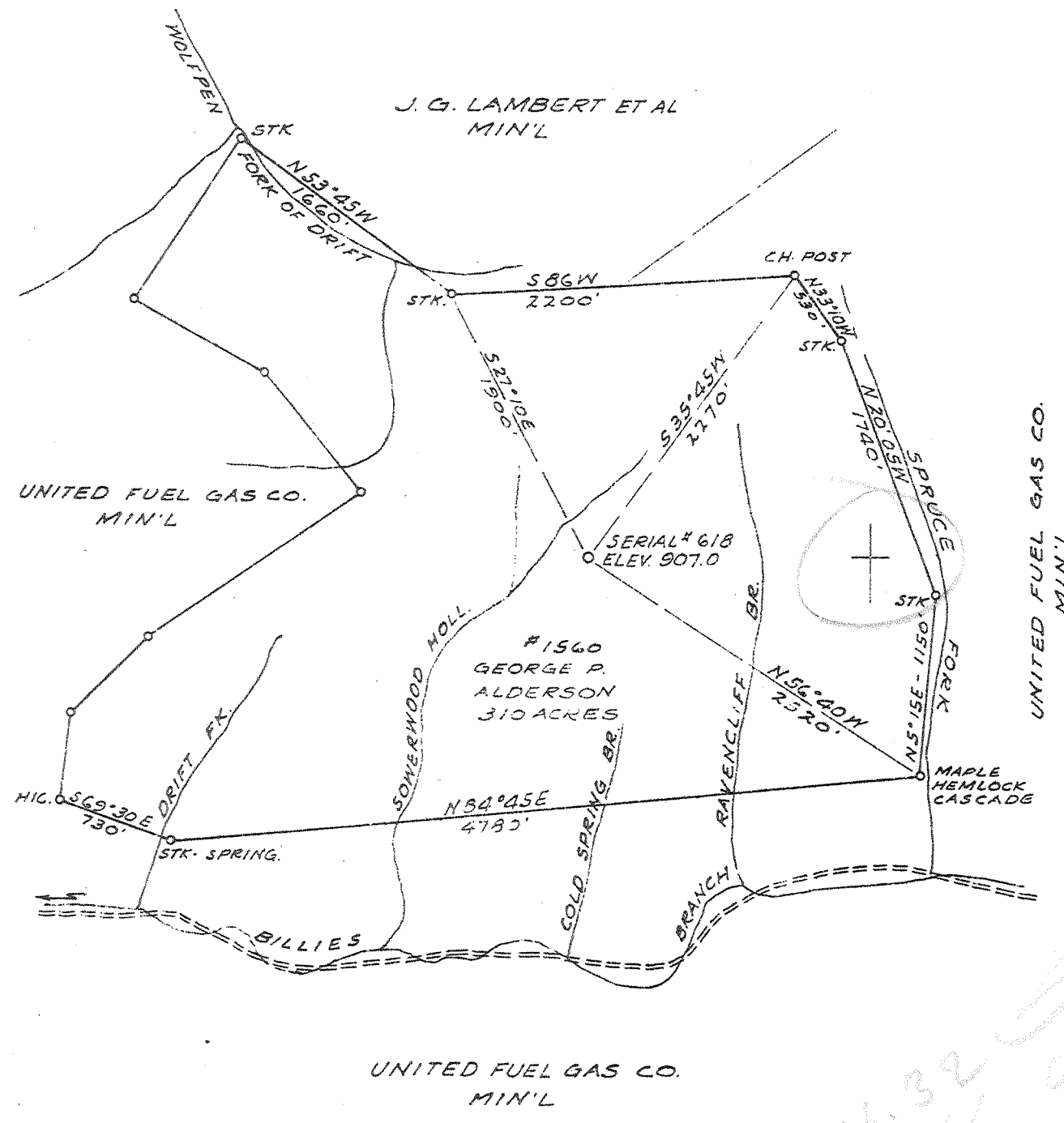


Latitude 38 10 Longitude 82 25



New Location
 Drill Deeper
 Abandonment

Vol. XVI, P. 675

Company THE OWENS LIBBEY-OWENS GAS DEPT
 Address BOX 1375 CHARLESTON, W. VA.
 Farm GEORGE P. ALDERSON.
 Tract _____ Acres 310 Lease No. 1560
 Well (Farm) No. ONE Serial No. 618
 Elevation (Spirit Level) 907.0
 Quadrangle WAYNE MC
 County WAYNE District LINCOLN
 Engineer T. S. Ramsey
 Engineer's Registration No. 269
 File No. _____ Drawing No. _____
 Date JULY 15 1941 Scale 1" = 1000 FT.

STATE OF WEST VIRGINIA
 DEPARTMENT OF MINES
 OIL AND GAS DIVISION
 CHARLESTON

WELL LOCATION MAP
 FILE NO. WAY-254

+ Denotes location of well on United States Topographic Maps, scale 1 to 62,500, latitude and longitude lines being represented by border lines as shown.
 - Denotes one inch spaces on border line of original tracing.

Deep Well

WEST VIRGINIA DEPARTMENT OF MINES
OIL & GAS DIVISION
W E L L R E C O R D

Permit No.	WV-254	Dry Hole
Company	The Owens, Libbey-Owens Gas Dept.	Casing & Tubing
Address	P.O. Box 1375, Charleston, W. Va.	3 1/4" 532'
Farm	George P. Alderson Acres 310	6 5/8" 1395'
Location	Billys Br. of 12 Pole Ck.	Coal encountered @ 316'
Well No.	613 Elev. 907'	24"; 446' 43"
District	Lincoln Wayne County	
Surface	Geo. P. Alderson, Lewisburg, W. Va.	
Mineral	Same	
Commenced	9-3-41	
Completed	10-13-41	
Shot	10-14-41	Depth of shot 2543-3023'
Volume	20,000 CF	
Fresh water	316' 1/2 bail per hr.; 440' 5 bails per hr.	
Salt water	909-952' HF	

Clay	Y.	S.	0	21	Slate	Gray	S.	3039	3118
Slate	Gray	S.	21	71	Sl. & Sh.	"	S.	3118	3200
Sand	"	S.	71	110	Slate	"	S.	3200	3260
Slate	Wh.	S.	110	140	Shale	Br.	S.	3260	3287
Sand	Wh.	S.	140	174	Cornif. Lime	Br.	H.	3287	3289
Slate	Gray	S.	174	182	Total Depth				3289
Sand	"	S.	182	238					
Slate	Dark	S.	238	314	Set bridge before shot			3128	3023
Coal	"	S.	314	316					
Sand	Gray	S.	316	322					
Slate	"	S.	322	372					
Sand	Wh.	S.	372	417					
Slate	Dark	S.	417	442					
Coal	Bk.	S.	442	446					
Slate	Dark	S.	446	487					
Sand	Wh.	S.	487	502					
Slate	Wh.	S.	502	517					
Sl. & Sh.	Dark	S.	517	569					
Slate	"	S.	569	642					
Slate	Light	S.	642	680					
Sand	"	S.	680	708					
Broken Sand	Dark	S.	708	758					
Slate	"	S.	758	857					
Salt Sand	Wh.	S.	857	1284					
Slate	Dark	S.	1284	1288					
Shell	Light	H.	1288	1296					
Slate	Dark	S.	1296	1299					
Lime Shell	"	H.	1299	1320					
Red Rock		S.	1320	1325					
Slate	Dark	S.	1325	1340					
Sand	Gray	S.	1340	1352					
Slate	Dark	S.	1352	1361					
Lime	"	H.	1361	1376					
Big Lime	Gray	H.	1376	1548					
Big Injun	"	H.	1548	1667					
Shell	Dark	H.	1667	1680					
Sl. & Sh.	"	H.	1680	1707					
Shell	"	H.	1707	1723					
Sl. & Sh.	"	S.	1723	1825					
Slate	"	S.	1825	1991					
Sl. & Sh.	"	S.	1991	2141					
Slate	"	S.	2141	2160					
Shale	Br.	S.	2160	2166					
Berea	Gray	H.	2166	2226	Oil 2200'	Show			
Slate	"	S.	2226	2236					
Shell	Light	H.	2236	2241					
Sl. & Sh.	Dark	S.	2241	2298					
Shale	Br.	S.	2298	2332					
Shell	Gray	H.	2332	2336					
Br. Shale	Br.	S.	2336	2371					
Sl. & Sh.	Gray	S.	2371	2418					
Lime Shells	"	H.	2418	2428					
Slate	Dark	S.	2428	2435					
Sl. & Sh.	Gray	S.	2435	2525					
Slate	Dark	S.	2525	2540					
Shale	Br.	S.	2540	3024					
Sl. & Sh.	Gray	S.	3024	3039					

3287
907

2380