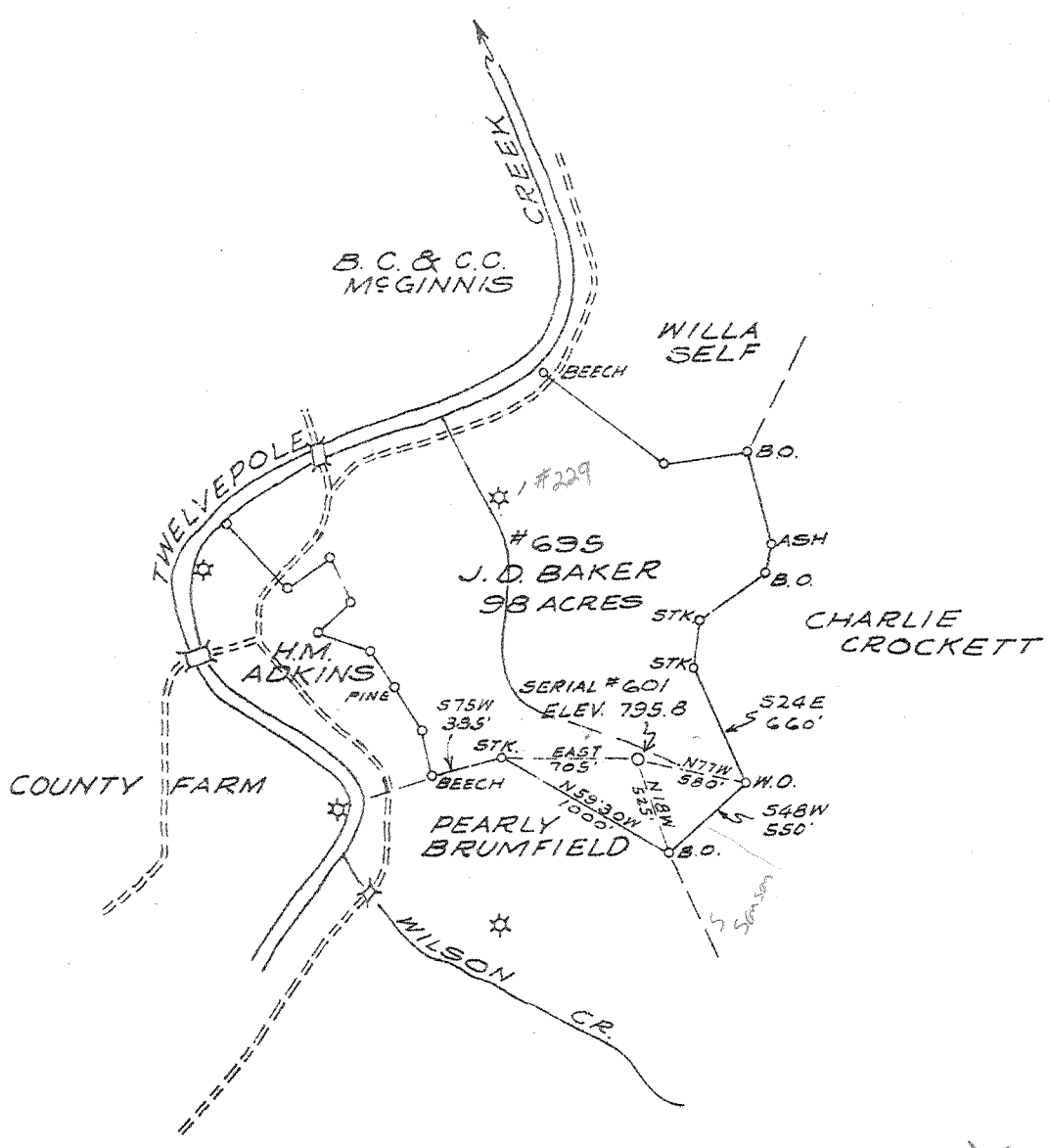


Latitude 38° 15'

Longitude 82° 25'



W-052
S-12

New Location
 Drill Deeper
 Abandonment

Vol. XVII P. 688

Company THE OWENS, LIBBEY-OWENS GAS DEPT
 Address BOX 1375 CHARLESTON, W. VA.
 Farm J. D. BAKER
 Tract _____ Acres 98 Lease No. 695
 Well (Farm) No. 2 Serial No. 601
 Elevation (Spirit Level) 795.8
 Quadrangle WAYNE NW
 County WAYNE District UNION
 Engineer T.S. Johnson
 Engineer's Registration No. 269
 File No. _____ Drawing No. _____
 Date MAR. 31, 1941 Scale 1" = 1000'

STATE OF WEST VIRGINIA
 DEPARTMENT OF MINES
 OIL AND GAS DIVISION
 CHARLESTON

WELL LOCATION MAP
 FILE NO. WAY-242

+ Denotes location of well on United States Topographic Maps, scale 1 to 62,500, latitude and longitude lines being represented by border lines as shown.
 - Denotes one inch spaces on border line of original tracing.

Sample (112-71) (1354-334)

Deep Well

Union District, Wayne County, W. Va.

By The Owens, Libbey-Owens Gas Dept., Charleston, W. Va.

Located 0.52 mi. W. of 82° 25' and 0.2 mi. S. of 38° 15' - NW -
Wayne Quadrangle.

Elevation, 795.8' L.

Permit Way-242.

Drilling commenced April 8, 1941; completed May 27, 1941.

Shot May 26, 1941; depth, 2560-3085'.

Gas well; 94,000 cu. ft.

Rock pressure, 290 lbs. in 24 hours.

Fresh water, 390 and 470'; salt water, 1040'.

8" casing, 422'; 6" casing, 1740'; 3" tubing, 3083'.

Section based on samples from 1354 to 3348' examined by C. N. Apsouri
(most of Devonian Shales section omitted).

Top. Bottom. Thickness.

Top.	Bottom.	Thickness.	
MAUCH CHUNK GROUP, 16+ FEET			
1354	- 1362	8	Shale, dark-green, calcareous, 75%; gray shale, 25%
1362	- 1366	4	Limestone, light-brown
1366	- 1370	4	Shale, dark-green, 60%; light-brown limestone, 40%
GREENBRIER LIMESTONE, 174 FEET			
1370	- 1375	5	Limestone, light-brown
1375	- 1380	5	Limestone, nearly white, sandy
1380	- 1456	76	Limestone, light-brown to nearly white
1456	- 1461	5	Limestone, light-brown, partly oolitic, 70%; green shale, probably cavings, 30%
1461	- 1477	16	Limestone, nearly white, slightly oolitic
1477	- 1482	5	Limestone, nearly white, dolomitic
1482	- 1512	30	Limestone, light-brown to nearly white
1512	- 1524	12	Limestone, light-brown, oolitic
1524	- 1532	8	Limestone, white, slightly oolitic
1532	- 1538	6	Limestone, light-brown, slightly dolomitic
1538	- 1544	6	Limestone, brown, dolomitic, slightly sandy
POCONO FORMATION, 673 FEET			
1544	- 1561	17	Shale, gray, partly calcareous, 60%; limestone, light-brown, sandy, 40%
1561	- 1566	5	Sandstone, white, very fine, 60%; dark-gray shale, 40%
1566	- 1574	8	Sandstone, white, very fine
1574	- 1580	6	No sample
1580	- 1602	22	Siltstone, gray, sandy
1602	- 1606	4	No sample
1606	- 1615	9	Sandstone, white, coarse, 50%; light-gray coarse siltstone, 50%
1615	- 1638	23	Siltstone, light-gray, sandy
1638	- 1654	16	Siltstone, light-gray, sandy, 60%; gray silty shale, 40%
1654	- 1675	21	Siltstone, light-gray, sandy
1675	- 1746	71	Siltstone and shale, gray to brown
1746	- 1800	54	No samples
1800	- 1951	151	Shale, gray
1951	- 1971	20	Shale, gray, 50%; brown shaly siltstone, 50%
1971	- 2097	126	Shale, gray
2097	- 2103	6	Shale, dark-gray
2103	- 2109	6	Shale and siltstone, gray, 75%; white, very fine sandstone, 25%
2109	- 2135	26	Shale, gray

(OVER)

J. D. BAKER NO. 2 (601) WELL (Continued).

Top.	Bottom.	Thickness.	
2135	- 2151	16	Shale, dark-gray, 70%; gray shale, 30%
2151	- 2182	31	No samples (brown shale reported, 2160-2182')
2182	- 2192	10	Sandstone, very fine, pyritic (Berea)
2192	- 2194	2	No sample
2194	- 2217	23	Sandstone, very fine, 50%; gray shale, 50%
DEVONIAN SHALES, 1127 FEET			
2217	- 2235	16	Shale and siltstone, gray
2235	- 2346	111	Shale, gray
2346	- 3282	936	Samples not examined
3282	- 3293	11	Shale, gray
3293	- 3344	51	Shale, very dark gray
HUNTERSVILLE CHERT? (CORNIFEROUS), 4+ FEET			
3344	- 3348	4	Chert, light-gray, calcareous
	3348		Total depth by samples
	3347		Total depth by driller's record

WEST VIRGINIA DEPARTMENT OF MINES
OIL & GAS DIVISION
W E L L R E C O R D

Permit No. Way-242
Wayne Quad.

Gas Well

Company The Owens, Libbey-Owens Gas Dept.,
Address Box 1375, Charleston, W. Va.
Farm J. D. Baker ACRES 98
Location Twelve Pole Creek
Well No. 601 ELEV. 796
District Union - Wayne County
Surface & Mineral J. D. Baker, Wayne, W. Va.
Commenced April 8, 1941
Completed May 27, 1941
Shot 5/26/41 - depth 2560-3085
Open Flow 9/10ths W in 2" Orifice
Volume 94,000 c.f.
Rock Pressure 290 lbs. 24 hrs.
Fresh Water 390 and 470
Salt Water 1040

CASING & TUBING
8-1/4 422 422
6-5/8 1740 1740
3 3083 3083

Packer - O.W. Wall &
Anchor
Size - 3x6-5/8x16
Depth set - 2207-2213

Perf. top - 2931-36
" bot. - 2982-87
" top - 3034-39

Surface	rd	s	0	22	Berea ?	gr	h	2196	2217	
Slate	gr	s	22	48	Slate & Shells	dk	h	2217	2261	
Sand	gr	s	48	78	Slate&Shells	gr	s	2261	2296	
Slate	gr	s	78	112	Slate	dk	s	2296	2306	
Slate	rd	s	112	121	Shale	bn	s	2306	2366	
Slate	gr	s	121	187	Slate	gr	s	2366	2466	
Sand	gr	s	187	207	Slate&Shells	gr	s	2466	2544	
Slate	lt	s	207	293	Slate	gr	s	2544	2596	
Slate	dk	s	293	345	Shale	bn	s	2596	2606	
Slate	wh	s	345	385	Slate&Shells	dk	s	2606	2642	
Sand	wh	s	385	418	Shale	bn	s	2642	2719	
Slate	wh	s	418	426	Shale	wh	s	2719	2765	
Sand	lt	s	426	451	Shale	bn	s	2765	2897	
Slate	lt	s	451	461	Slate&Shells	bn	s	2897	2918	
Sand	gr	h	461	518	Shale	bn	s	2918	3085	
Slate	dk	s	518	528	Slate	wh	s	3085	3167	
Sand	wh	s	528	603	Shale	bn	s	3167	3177	
Slate	dk	s	603	860	Slate	wh	s	3177	3193	
Sand	wh	h	860	895	Slate&Shells	gr	s	3193	3225	
Slate	drk	s	895	898	Slate	lt	s	3225	3293	
Sand	gr	h	898	938	Shale	bn	s	3293	3346	No Gas in Shale
Slate	dk	s	938	946						
Sand	wh	s	946	1029	Coniferous	lt	h	3346	3347	
Slate	dk	h	1029	1035	Total Depth				3347	
Sand	wh	h	1035	1144	SW 1140 HF Filled to				3085	
Slate	dk	s	1144	1198						
Sand	gr	h	1198	1298						
Slate	dk	s	1298	1310						
Sand	gr	h	1310	1340						
Slate	dk	s	1340	1342						
Sand	wh	h	1342	1354						
Lime	dk	h	1354	1370						
Big Lime	gr	h	1370	1375						
Big Lime	wh	h	1375	1384						
Sand	gr	s	1564	1601						
Big Injun	gr	s	1601	1626						
Sand	dk	h	1626	1640						
Sand	gr	s	1640	1684						
Slate	gr	s	1684	1735						
Shell	dk	h	1735	1750						
Slate	gr	s	1750	1800						
Slate&Shells	gr	s	1800	1911						
Shell	dk	h	1911	1919						
Slate&Shells	gr	s	1919	2084						
Sand	gr	h	2084	2109						
Slate&Shells	dk	s	2109	2160						
Shale	bn	s	2160	2182						
Berea	gr	h	2182	2196	Oil			2192		

Show

3347
196
2551

1601
2192
3083