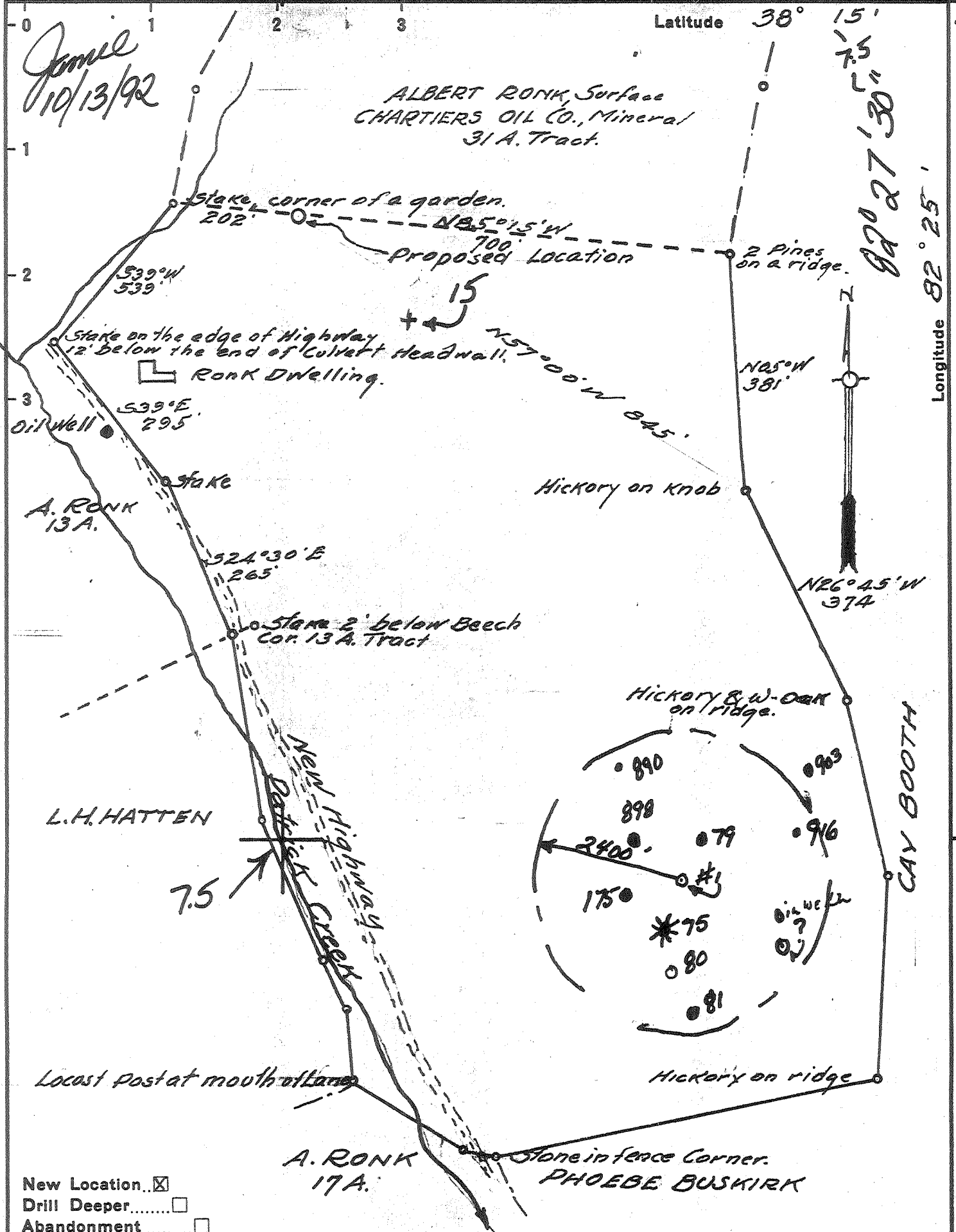


10,730'

Latitude 38° 15'

James  
10/13/92

ALBERT RONK, Surface  
CHARTIERS OIL CO., Mineral  
31 A. Tract.



92° 27' 30" W

Longitude 82° 25'

13410'

New Location   
Drill Deeper   
Abandonment

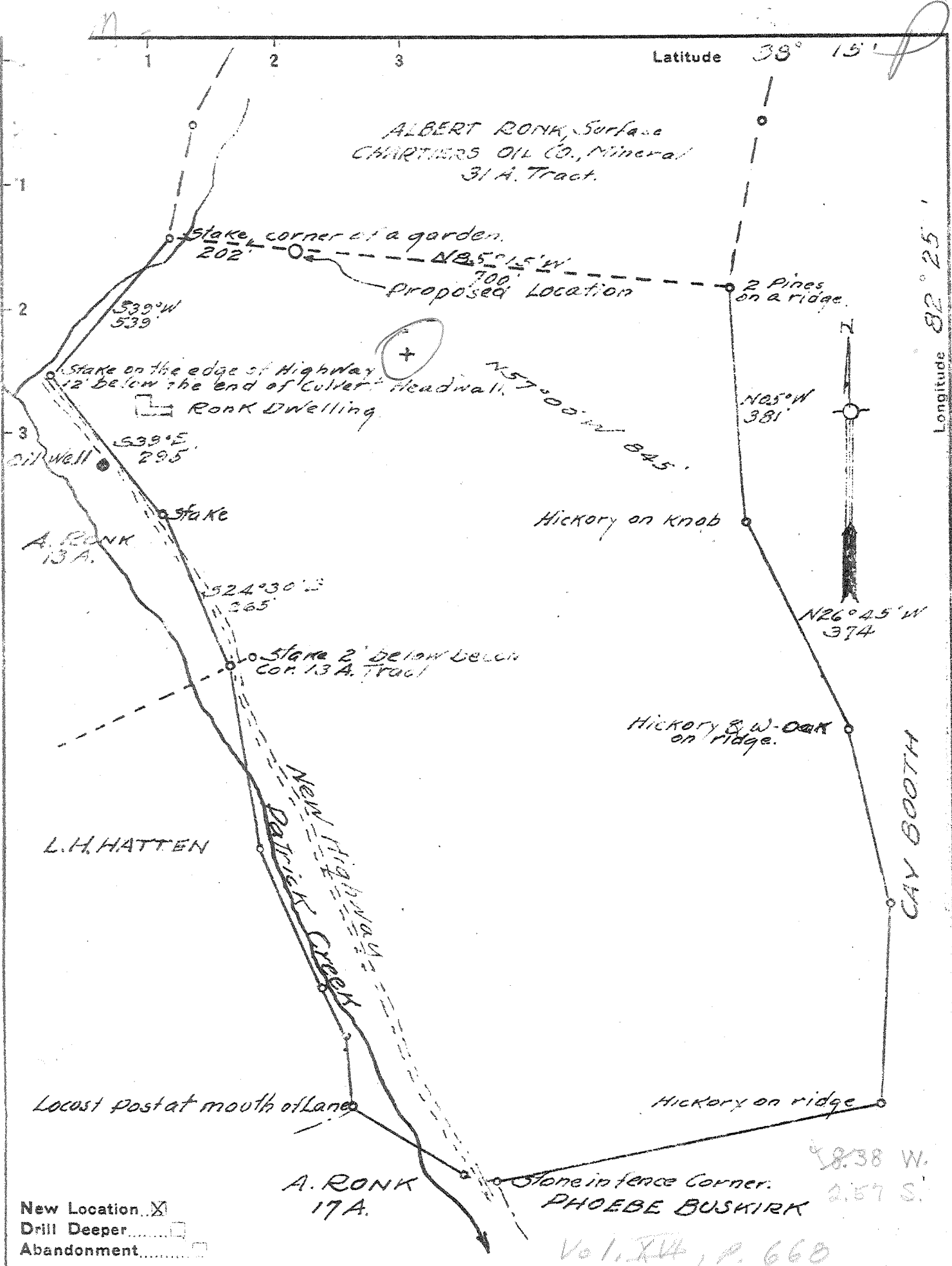
Company PIP Petroleum  
 Address 100 Renaissance Center, Suite 1690  
 Farm Albert Ronk / Missing Surface  
 Tract \_\_\_\_\_ Acres 30 Lease No. \_\_\_\_\_  
 Well (Farm) No. 1 Serial No. \_\_\_\_\_  
 Elevation (Spirit Level) 799.031  
 Quadrangle Wayne 15 7.5  
 County Wayne District BUTLER  
 Engineer Basil S. Burgess  
 Engineer's Registration No. 469  
 File No. \_\_\_\_\_ Drawing No. \_\_\_\_\_  
 Date 7-3-40 Scale 1"=200'

Detroit, MI. 48243  
STATE OF WEST VIRGINIA  
DEPARTMENT OF MINES  
OIL AND GAS DIVISION  
DONNA CARUANA CHARLESTON

WELL LOCATION MAP  
API Well No. 47-099-00206-P

+ Denotes location of well on United States Topographic Maps, scale 1 to 62,500, latitude and longitude lines being represented by border lines as shown.

- Denotes one inch spaces on border line of original tracing.



Company Chartiers Oil Co.

Address Pittsburg, Pa.

Farm Albert Ronk

Tract \_\_\_\_\_ Acres 30 Lease No. \_\_\_\_\_

Well (Farm) No. 1 Serial No. 412 10/26/88

Elevation (Spirit Level) 799.03 790 - 75 700

Quadrangle Wayne NN

County Wayne District BUTLER

Engineer Basil S. Burgess

Engineer's Registration No. 469

File No. \_\_\_\_\_ Drawing No. \_\_\_\_\_

Date 7-3-40 Scale 1"=200'

STATE OF WEST VIRGINIA  
DEPARTMENT OF MINES  
OIL AND GAS DIVISION  
CHARLESTON

**WELL LOCATION MAP**  
FILE NO. WAY-206

+ Denotes location of well on United States Topographic Maps, scale 1 to 62,500, latitude and longitude lines being represented by border lines as shown.

- Denotes one inch spaces on border line of original tracing.

6-6 229

Deep Well



WEST VIRGINIA DEPARTMENT OF MINES  
OIL & GAS DIVISION  
W E L L R E C O R D

Permit No. Way-206  
Wayne Quad.

Gas Well

Company	The Chartiers Oil Co.	CASING & TUBING
Address	808 Columbia Bldg., Pittsburgh, Pa.	13 Wood 7
Farm	Albert Ronk ACRES 122-1/2	8-1/4 1175
Well No.	1 ELEV. 799.03	6-5/8 2238
District	Butler - Wayne County	5-3/16 3410
Surface	Albert Ronk, Wayne, W. Va.	2 3832
Mineral	Same & Chartiers Oil Co., Pgh. Pa.	Packer - Midget Leas & Rubber
Commenced	July 18, 1940	Size - 2" x 5-3/16"
Completed	Sept. 18, 1940	Depth set - 3774
Open Flow	19/10ths Merc. in 2"	
Volume	700,000 c.f.	
Rock Pressure	1280 lbs. 24 hrs.	5-3/16" casing cemented
Water	-	Sept. 15, 1940

No Coal

Gravel	0	11	
Shale - blue	11	218	
Sand	218	360	Water 360 - 1/2 bailer
Shale - black	360	380	
Sand-Shells	380	560	
Shale - blue	560	610	
Lime-Sand	610	642	
Shale	642	705	
Sand	705	788	Oil 705 - show
Shale - grey	788	925	
Salt Sand	925	1025	Water 940 - hole full
Shale	1025	1034	
Sand	1034	1056	
Shale	1056	1075	
Sand	1075	1175	
Shale	1175	1210	
Little Lime	1210	1222	
Pencil Cave	1222	1224	
Big Lime	1224	1410	
Big Injun	1410	1580	Gas 1445
Shale	1580	1998	
Shale - Brown	1998	2024	
Berea Grit	2024	2034	Oil & Gas 2026
Shale-Sand	2034	2138	
Shale - black	2138	2230	
Shale - white	2230	2320	
Shale - brown	2320	2370	
Shale - white	2370	2455	
Shale - brown	2455	2525	
Shale - white	2525	2560	
Shale - brown	2560	2650	
Shale - grey	2650	2692	
Shale - brown	2692	2775	Gas 2650
Shale - white	2775	3050	
Shale - brown	3050	3095	
Uniform Lime	3095	3838	Sulphur Water at 3200 and 3305
			Gas 3305, 3360 & 3385
			Gas 3800 - Top of pay

3095  
799  

---

2296

uniform  
Niagara