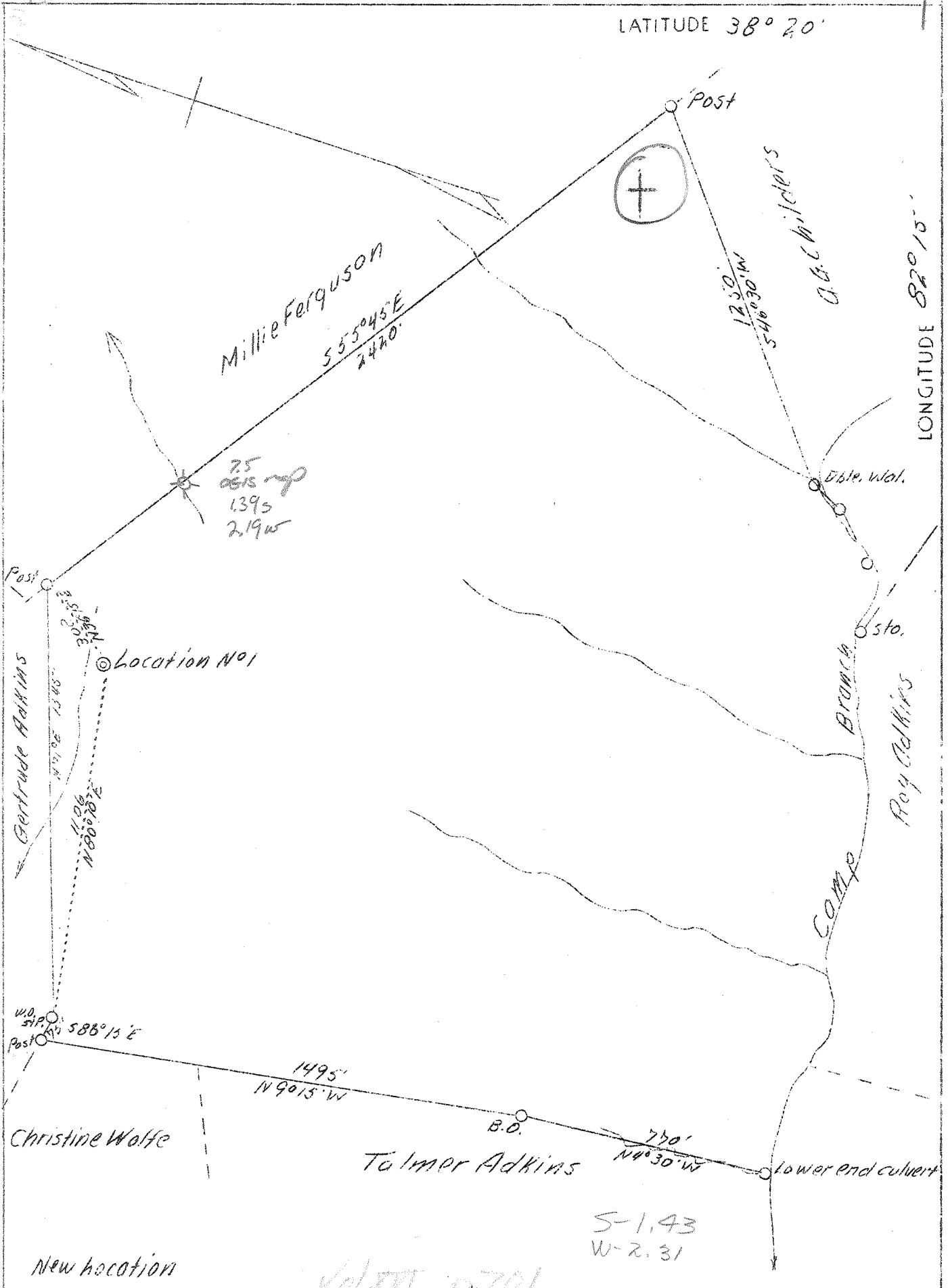


LATITUDE 38° 20'

LONGITUDE 82° 15'



Company H. L. Skidmore  
 Address Paintsville, Ky.  
 Farm N. B. Morrison  
 Tract 1  
 Acres 150  
 Well (Farm) No. 1  
 Elevation (SL) 880  
 Quadrangle *SE* Guyandot *SE*  
 County Wayne  
 District Union  
 Engineer G. C. Ewing  
 Eng. Reg. No. 309  
 Date Sept. 4, 1939  
 Scale 1" = 400'

STATE OF WEST VIRGINIA  
 Department of Mines  
 OIL & GAS DIVISION  
 Charleston

WELL LOCATION MAP

File No. Way-170

x Denotes location of well on U. S. Topographic Maps, scale 1 to 62,500, latitude and longitude lines being represented by border lines as shown.

- Denotes one inch spaces on border line of original tracing.

*Deep Well*

WEST VIRGINIA DEPARTMENT OF MINES  
OIL & GAS DIVISION  
W E L L R E C O R D

Permit No. Way-170  
Guyandot Quad.

Gas Well

Company H. L. Skidmore  
Address 1212-6th Ave., Huntington, W. Va.  
Farm M. B. Morrison ACRES 150  
Location Guyandot  
Well No. 1 ELEV. 880  
District Union - Wayne County  
Surface & Mineral Mrs. M.B. Morrison, Barboursville, W.Va.  
Commenced Sept. 23, 1939  
Completed Dec. 18, 1939  
Shot 12/20/39 - Depth top 3082-bottom 3782  
Open Flow 4/10ths Water in one inch  
Volume 66,000 c.F.  
Rock Pressure 320 lbs. 36 hrs.  
Water None

CASING & TUBING

10	20
8-1/4	160
6-5/8	1939

Packer -  
Size -  
Depth set - 1939

Formation	Top	Base	Formation	Top	Base
Surface	0	20	White Slate	2910	3110
Red Rock	20	35	Brown Shale	3110	3160
Slate	35	340	White Slate	3160	3219
Sand	340	355	Brown Shale	3210	3445
Slate	355	440	White Slate	3445	3675
Sand	440	450	Brown Shale	3675	3780
Slate	450	465	Corniferous	3780	3782
Sand	465	485	Total Depth		3782
Slate	485	565			
Sand	565	705			
Slate	705	740			
Sand	740	780			
Slate	780	785			
Sand	785	810			
Slate	810	815			
Lime	815	821			
Slate	821	830			
Sand	830	865			
Black S	865	870			
Sand	870	885			
Slate Shells	885	940			
Sand	940	1020			
Slate Shells	1020	1075			
Salt Sand	1075	1158			
Slate	1158	1163			
Sand	1163	1473			
Black Lime	1473	1486			
Red Rock	1486	1498			
Slate Shells	1498	1562			
Little Lime	1562	1583			
Pencil Cave	1583	1583			
White Lime	1583	1760			
Slate	1760	1765			
Lime Grit	1765	1800			
Slate	1800	1805			
Keener Sand	1805	1835			
Injun Sand	1835	1835			
Slate&Shells	1835	2395			
Coffee Shale	2395	2401			
Berea Grit	2401	2425			
Slate Shells	2425	2480			
B. Shale	2480	2545			
Slate Shells	2545	2880			
Brown Shale	2880	2910			

3780  
880  

---

2900

1075  
830  

---

195

1835  
1805  

---

95

883

50