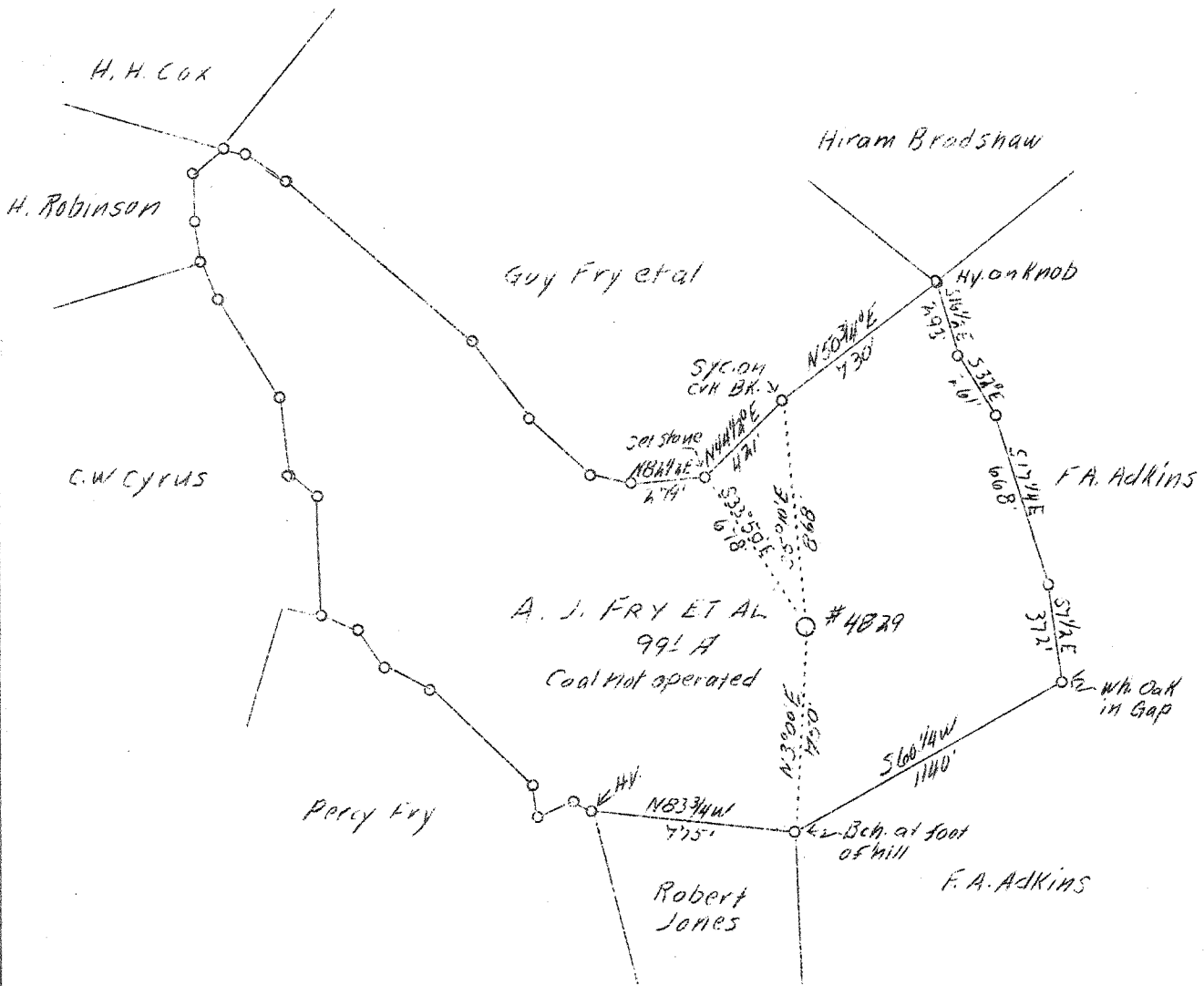


LATITUDE 38°15'



LONGITUDE 87°20'



2108 W  
0157 S

APR. 17/31

New Location Vol. XVI, p. 696

Company	United Fuel Gas Co.,
Address	Charleston, W. Va.
Farm	A. J. Fry, et al
Acres	99.1
Lease No.	39492
Well (Farm) No.	One
Serial No.	4829
Elevation	625 Barometer
Quadrangle	Wayne
County	Wayne
District	Union
Engineer	G. A. Cunningham
Eng. Reg. No.	659
File No.	20-51
Date	Feb. 2, 1939
Scale	1" - 660'

STATE OF WEST VIRGINIA  
Department of Mines  
OIL & GAS DIVISION  
Charleston

WELL LOCATION MAP

File No. Way-151

x Denotes location of well on U. S. Topographic Maps, scale 1 to 62,500, latitude and longitude lines being represented by border lines as shown.

- Denotes one inch spaces on border line of original tracing.

Deep Well

WEST VIRGINIA DEPARTMENT OF MINES

OIL & GAS DIVISION

WELL RECORD

Permit No. Way-151

Gas Well

Wayne Quad.

CASING & TUBING

Company	United Fuel Gas Co.	10	21	21
Address	Charleston, W. Va.	8-1/4	398	398
Farm	A. J. Fry et al ACRES 99.1	6-5/8	1114	1114
Location	Millers Fork of Beech Fork			
Well No.	4829 ELEV. 625			
District	Union - Wayne County			
Surface & Mineral	A. J. Fry, et al, Wayne, W. Va.			
Commenced	March 1, 1939			
Completed	April 20, 1939			
Date shot	4/21/39 - Depth 2359			
Open Flow	2/10ths Water in 2 inch A. S.			
Volume	60,000 c.f.			
Rock Pressure	475 lbs. 48 hrs.			
Water	-			

Formation Color <sup>Hay</sup> 5 Top Base Result Formation Color <sup>Hay</sup> 5 Top Base Result

Formation	Color	Hay	5	Top	Base	Result	Formation	Color	Hay	5	Top	Base	Result
Surface						0							17
Sand						17							27
Slate						27							100
Sand						100							140
Slate						140							200
Sand						200							245
Slate						245							330
Sand						330							396
Slate						396							595
Salt Sand						595							797
Slate						797							835
Sand						835							987
Slate						987							995
Maxon Sand						995							1014
Slate						1014							1050
Little Lime						1050							1075
Pencil Cave						1075							1089
Big Lime						1089							1251
Slate & Shells						1251							1295
Injun Sand						1295							1345
Slate & Shells						1345							1670
Shell						1670							1710
Slate						1710							1740
Shell						1740							1760
Slate						1760							1850
Brown Shale						1850							1862
Berca Grit						1862							1869
Slate						1869							1897
Shell						1897							1932
Slate						1932							1948
Brown Shale						1948							2027
Slate						2027							2355
Brown Shale						2355							2415
Slate						2415							2512
Brown Shale						2512							2835
Slate						2835							3040
Brown Shale						3040							3114
Corniferous Lime						3114							3115
Total Depth													3115

102

505

50

2720

Show gas 2720