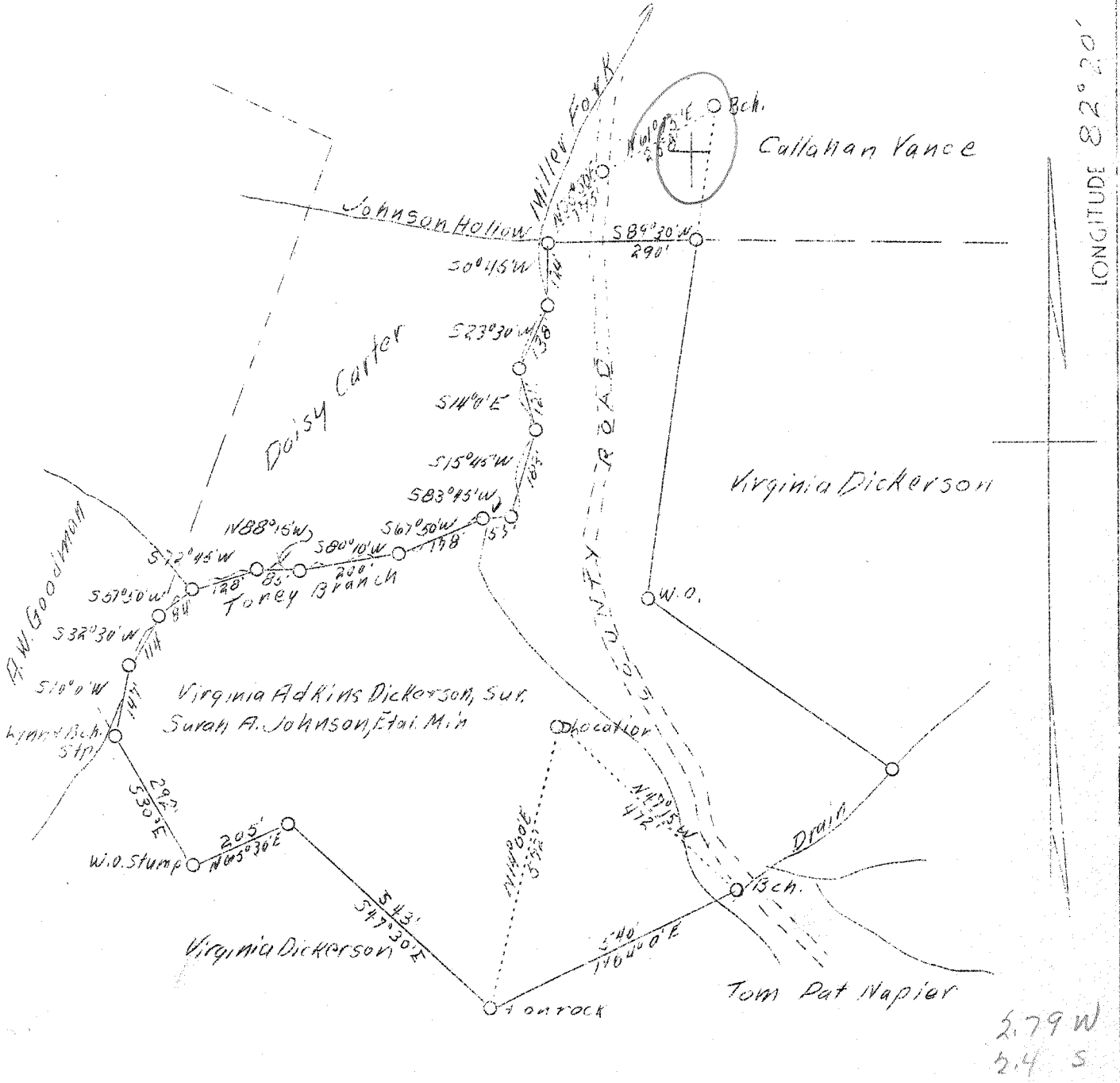


LATITUDE 38° 15'

LONGITUDE 82° 20'



New Location

Vol. XVI, P. 693

Company	Fraley Gas Company
Address	R. H. Adkins, Hamlin, W.Va.
Farm	Virginia Adkins Dickerson
Tract	One
Acres	40 plus
Well (Farm) No.	One
Elevation (SP)	810
Quadrangle	Wayne <i>MC</i>
County	Wayne
District	Union
Engineer	G. C. Ewing
Eng. Reg. No.	309
Date	Sept. 30, 1938
Scale	1" = 300'

STATE OF WEST VIRGINIA  
 Department of Mines  
 OIL & GAS DIVISION  
 Charleston

WELL LOCATION MAP

File No. Way-144

x Denotes location of well on U. S. Topographic Maps, scale 1 to 62,500, latitude and longitude lines being represented by border lines as shown.

- Denotes one inch spaces on border line of original tracing.

*Deep Well*



STATE OF WEST VIRGINIA  
DEPARTMENT OF MINES  
OIL AND GAS DIVISION 13

WELL RECORD

Oil or Gas Well Gas  
(KIND)

Quadrangle \_\_\_\_\_

Permit No. Way-144

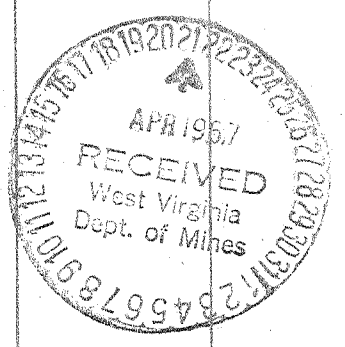
Company R.H. Adkins  
Address Hamlin, W.Va.  
Farm Virginia Dickerson Acres \_\_\_\_\_  
Location (waters) Millers Fork  
Well No. 1 Elev. \_\_\_\_\_  
District Union County Wayne  
The surface of tract is owned in fee by Virginia Dickerson  
Address Wayne, W.Va.  
Mineral rights are owned by C.M. Fraley et al  
Address Wayne, W.Va.  
Drilling commenced Jan. 13, 1939  
Drilling completed May 1, 1939  
Date Shot 5-3-1939 From 3275' To 2000'  
With 7,600 Lbs. Detonite

Casing and Tubing	Used in Drilling	Left in Well	Packers
Size			Spang
16			Kind of Packer
13			Wall & Anchor
100		17'	Size of <u>6 5/8 x</u>
8 1/2		356	<u>8 1/2'</u>
6 1/2		1,237	Depth set <u>2,143'</u>
5 3/16			Perf. top <u>2100</u>
3			Perf. bottom <u>2250</u>
2		3,275	Perf. top _____
Liners Used			Perf. bottom _____

Open Flow 34/10ths Water in 2 Inch  
/10ths Merc. in \_\_\_\_\_ Inch  
Volume 144 MCF ONONDAGA M. Cu. Ft.  
Rock Pressure 340 lbs. 72 hrs.  
Oil None bbls., 1st 24 hrs.  
Fresh water 500 feet \_\_\_\_\_ feet  
Salt water 775 feet 945 feet

CASING CEMENTED \_\_\_\_\_ SIZE \_\_\_\_\_ No. Ft. \_\_\_\_\_ Date \_\_\_\_\_  
COAL WAS ENCOUNTERED AT 23 FEET 36 INCHES  
\_\_\_\_\_ FEET \_\_\_\_\_ INCHES \_\_\_\_\_ FEET \_\_\_\_\_ INCHES  
\_\_\_\_\_ FEET \_\_\_\_\_ INCHES \_\_\_\_\_ FEET \_\_\_\_\_ INCHES

Formation	Color	Hard or Soft	Top	Bottom	Oil, Gas or Water	Depth Found	Remarks
Red Clay			0	17			
Sand			17	23			
Slate			23	45			
Sand & Slate			45	93			
Coal			93	96			
Blue Slate			96	104			
Black Slate			104	113			
Blue Slate			113	194			
Sand			194	298			
Slate			298	307			
Sand			307	351			
Slate Blue			351	420			
Sand White			420	492			
Slate Blue			492	540			
Sand Blue			540	550			
Slate			550	590			
Lime Shell			590	635			
Slate			635	650			
Lime Shell			650	665			
White Slate			665	740			
White Shells			740	775			
Salt Sand			775	945			
Slate White			945	960			
Sand Blue			960	970			
Slate			970	985			
Sand			985	998			
Slate Blue			998	1000			
Sand			1000	1130			
Slate			1130	1141			
Lime Shell			1141	1150			
Slate Blue			1150	1195			
Little Lime			1195	1210			
Pencil Cave			1210	1215			
Big Lime			1215	1227			
White Slate			1227	1229			



Formation	Color	Hard or Soft	Top 13	Bottom	Oil, Gas or Water	Depth Found	Remarks
Big Lime			1229	1386			
Keener Sand			1386	1410			
Red Rock			1410	1435			
Shell?			1435	1455			
Enjun Sand			1455	1480			
Shell			1480	1490			
Sand Blue			1490	1504			
Blue Slate			1504	1560			
Blue Slate			1560	1715			
White Slate			1715	1780			
Shell			1780	1800			
Slate Blue			1800	1968			
Slate & Shell			1968	2009			
Brown Shale			2009	2014			
Berea Sand			2014	2021			
Lime Shell			2021	2025			
White Slate			2025	2033			
Shell			2033	2060			
Slate & Shell			2060	2105			
Brown Shell			2105	2190			
Slate & Shell			2190	2230			
White Slate			2230	2331			
Blue Slate			2331	2460			
Brown Slate			2460	2485			
Black Shell			2485	2510			
Brown Shale			2510	2583			
White Slate			2583	2593			
Dark Shale			2593	2640			
White Slate			2640	2655			
Gray Shale			2655	2685			
Brown Shale			2685	2753			
Gray Shale			2753	2763			
Brown Shale			2763	2942			
Lime Shell			2942	2980			
White Slate			2980	3110			
Shell			3110	3155			
White Slate			3155	3175			
Dark Slate			3175	3192			
Brown Shale			3192	3273			
Con. Lime	ONONDAGA		3273	3275			
Bottom of Hole			3275				

Date May 31, 1939

APPROVED R.H. Adkins, Owner

By W. J. Henderson  
(Title) Supt.