

New Location   
 Drill Deeper   
 Abandonment  11/2/78

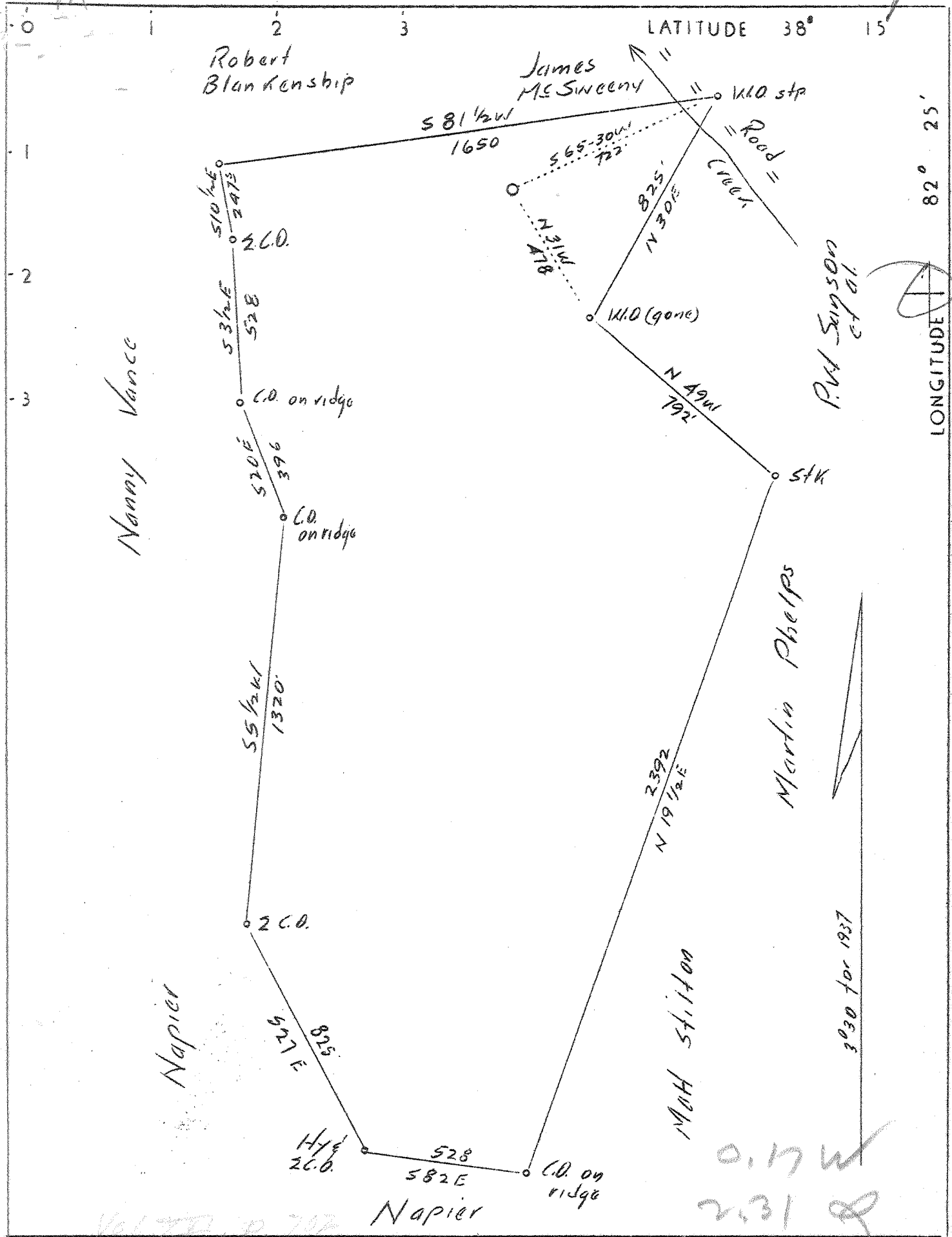
Company JACKSON DEVELOPMENT CO. INC.  
 Address PO BOX 498, HAMLIN WV 25523  
 Farm P.W. SANSOM, ETAL  
 Tract \_\_\_\_\_ Acres 96 Lease No. \_\_\_\_\_  
 Well (Farm) No. 1 Serial No. \_\_\_\_\_  
 Elevation (Spirit Level) 765  
 Quadrangle Wayne NW  
 County Wayne District UNION  
 Engineer H. V. Carper Jr.  
 Engineer's Registration No. 738  
 File No. \_\_\_\_\_ Drawing No. \_\_\_\_\_  
 Date 17th June 1937 Scale 1" = 400'

STATE OF WEST VIRGINIA  
 DEPARTMENT OF MINES  
 OIL AND GAS DIVISION  
 CHARLESTON

WELL LOCATION MAP  
 FILE NO. WAY-119-P

+ Denotes location of well on United States Topographic Maps, scale 1 to 62,500, latitude and longitude lines being represented by border lines as shown. NOV 21 1978  
 — Denotes one inch spaces on border line of original tracing. **47-099**

Deep Well



Company	Woodall & Jackson
Address	Hamlin, W. Va.
Farm	P.W. Sanson, et al
Tract	Acres 96 Lease No.
Well (Farm) No.	1 Serial No.
Elevation (Spirit Level)	765
Quadrangle	Wayne
County	Wayne District Union
Engineer	H.W. Carper Jr.
Engineer's Registration No.	738
File No.	Drawing No.
Date	June 17, 1937 Scale 1"=400'

STATE OF WEST VIRGINIA  
 Department of Mines  
 OIL AND GAS DIVISION  
 CHARLESTON

WELL LOCATION MAP  
 File No. WAY-119

Denotes location of well on United States Topographic Maps, scale 1 to 62,500, latitude and longitude lines being represented by border lines as shown.

Denotes one inch spaces on border line of original tracing.

Deep Well

WEST VIRGINIA DEPARTMENT OF MINES

OIL AND GAS DIVISION

WELL RECORD

Permit No. Way-119

Gas Well

Wayne Quad.

CASING & TUBING

Company	Woodall & Jackson Gas Co.	13	645	645
Address	Hamlin, W.Va.	6 5/8	1144	1144
Farm	P.W.Sansom et al	2	1928	1928
Location	Miller's Fork			
Well No.	One			
	Elev. 765'			
District	Union			
	County Wayne			
Surface	P.W.Sansom et al, Wayne, W.Va.	Kind	Not given	
Mineral	Same,	Depth	1144	
Drilling	Commenced July 8, 1937	Size	Not given	
	Completed Oct. 25, 1937	Perf. top		
Date Shot	Oct. 13, 1937	Perf. bottom	60	
Volume	521,280 Cu.Ft.			
Rock Press.	600# 48 hrs.			

PACKER

Formation Color		Hor	TOP	Base	Result	Formation Color		Hor	TOP	Base	Result
Surface			0	8							
Sand			8	22							
Lime			22	38							
Slate			38	57							
Sand			57	122							
Slate			122	152							
Sand			152	241							
Slate			241	308							
Sand			308	378							
Slate & Shells			378	415							
Sand			415	468							
Slate			468	571							
Sand			571	615	Water						
Slate	Black		615	650	585						
Salt Sand			650	700							
Slate			700	705	Water						
Sand			705	792	595						
Slate & Shells			792	810							
Sand			810	1026							
Slate			1026	1035							
Pale Red Rock			1035	1041							
Slate	Gray		1041	1050							
Lime Shell			1050	1062							
Red Rock			1062	1082							
Slate	Grey		1082	1088							
Little Lime			1088	1118							
Lime	White		1118	1130							
Slate			1130	1134							
Big Lime			1134	1309							
Red Rock			1309	1331							
Big Injun			1331	1379							
Lime Shell			1379	1394							
Slate			1394	1823							
Shell			1823	1829							
Slate & Shell			1829	1850							
Slate	Black		1850	1904							
Shale	Brown		1904	1908							
Berea Sand			1908	1913							
Lime	Black		1913	1970							
Slate	White		1970	1995							
Brown (?)			1995	2075							
Slate	White		2075	2419							
Shale	Brown		2419	2883	Gas						
Shale	White		2883	3123	2435						
Shale	Brown		3123	3187							
Corniferous Lime			3187								

3187  
265  
-----  
2422

105

1331  
765  
-----  
566