

LATITUDE

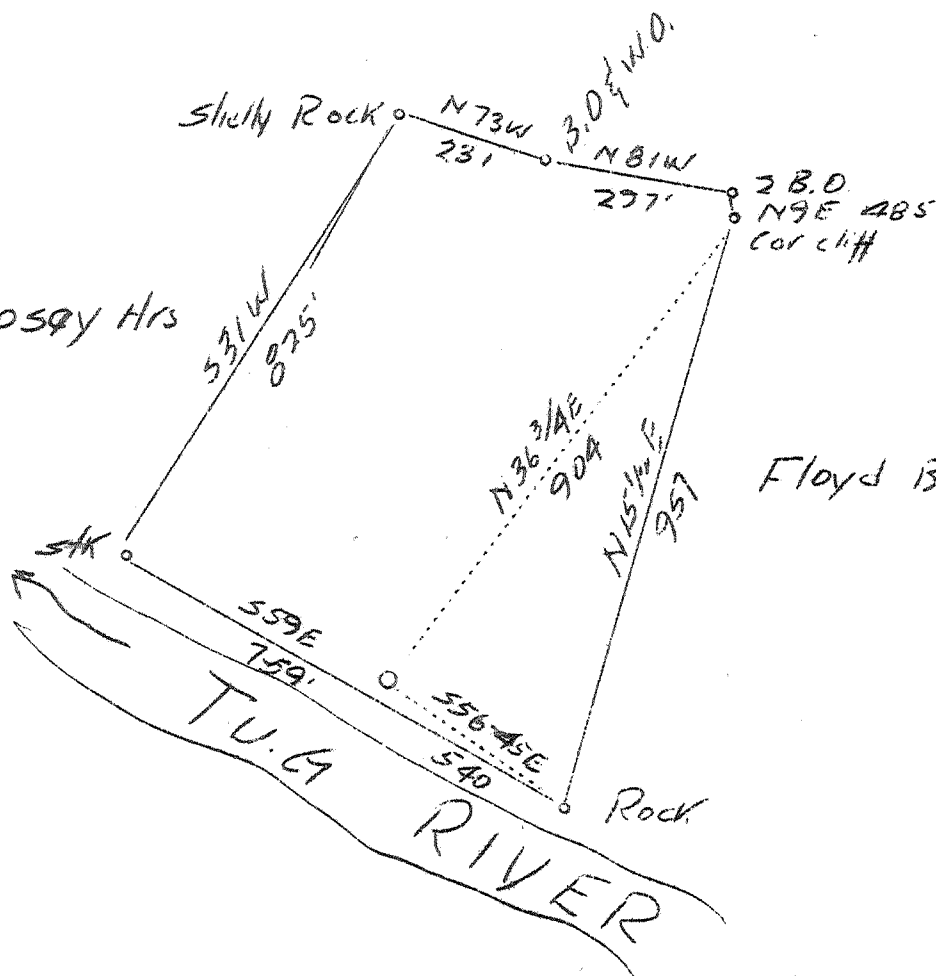
37° 55' 00"

LONGITUDE 82° 20' 12"

Harvey Stepp Hrs.

Dempsey Hrs

Floyd Brewer



4.2 S 37° 55'  
4.51 W 82° 20'

ABD.  
8/41

See Map ETL, p 579

Company Huntington Oklahoma Oil Co.

Address Huntington, W.Va.

Farm C.C.Preece

Tract          Acres 14 Lease No.         

Well(Farm) No. 1 Serial No.         

Elevation (Spirit Level) 607'

Quadarangle Naugatack G

County Wayne District Lincoln

Engineer Basil S. Burgess

Engineer's Registration No. 467

File No.          Drawing No.         

Date 6-29-37 Scale 1"-300'

STATE OF WEST VIRGINIA  
Department of Mines  
OIL AND GAS DIVISION  
CHARLESTON

WELL LOCATION MAP  
File No. WAY-115

Denotes location of well on United States Topographic Maps, scale 1 to 62,500, latitude and longitude lines being represented by border lines as shown.

Denotes one inch spaces on border line of original tracing.

Deer Well

WEST VIRGINIA DEPARTMENT OF MINES

OIL & GAS DIVISION

WELL RECORD

Permit No. Way-115

- Well

Quad.

CASING & TUBING

Company                   Huntington Oklahoma Oil Co.  
 Address                 Box 424, Huntington, W. Va.  
 Farm                     -                                 ACRES -  
 Well No.                 1 Preece  
 District                 -             Wayne County  
 Surface & Mineral     -  
 Shot                     At 2178 - 3018  
 Open Flow               -  
 Volume                  -     82 m  
 Rock Pressure          -  
 Oil                       -  
 Fresh Water            95  
 Salt Water              -

No casing record given

Drilling commenced -             Completed - (log dated 8/14/37)

Formation Color <sup>Har</sup> Top Base Result				Formation Color <sup>Har</sup> Top Base Result			
Surface		0	24				
Sand		24	40				
Coal		40	43				
Slate		43	95				
Coal		95	99				
Slate & Sand		99	155				
Sand		155	170				
Slate		170	220				
Sand		220	235				
Slate		235	420				
Sand		420	500				
Slate		500	505				
Sand		505	525				
Slate & Sand		525	585				
Slate		585	605				
Slate & Sand		605	795				
Sand		795	820				
Slate		820	845				
Red Rock		845	860				
Slate		860	870				
Sand		870	880				
Red Rock		880	900				
Slate		900	915				
Red Rock		915	925				
Hard Shell		925	945				
Slate		945	1018				
Maxton		1018	1030				
Little Lime		1030	1062				
Pencil Clay		1062	1065				
Big Lime		1065	1255				
Keener Sand		1255	1275				
Big Injun		1275	1310				
Slate & Shells		1310	1755				
Sunberry		1755	1785				
Berea Grit		1785	1900				
Brown Shale		1900	1975				
White Shale		1975	2030				
Hard Shell		2030	2037				
Light Shale		2037	2150				
Brown Shale		2150	2300				
Light Shale		2300	2390				
Brown Shale		2390	2515				
White & Brown		2515	2550				
Brown Shale		2550	2675				
White Shale		2675	2923				
Brown Shale		2923	3008				
Ferrous Lime		3008	3018	Bottom	PRODUCING	WELL	