

9M

LATITUDE 38° 20' P

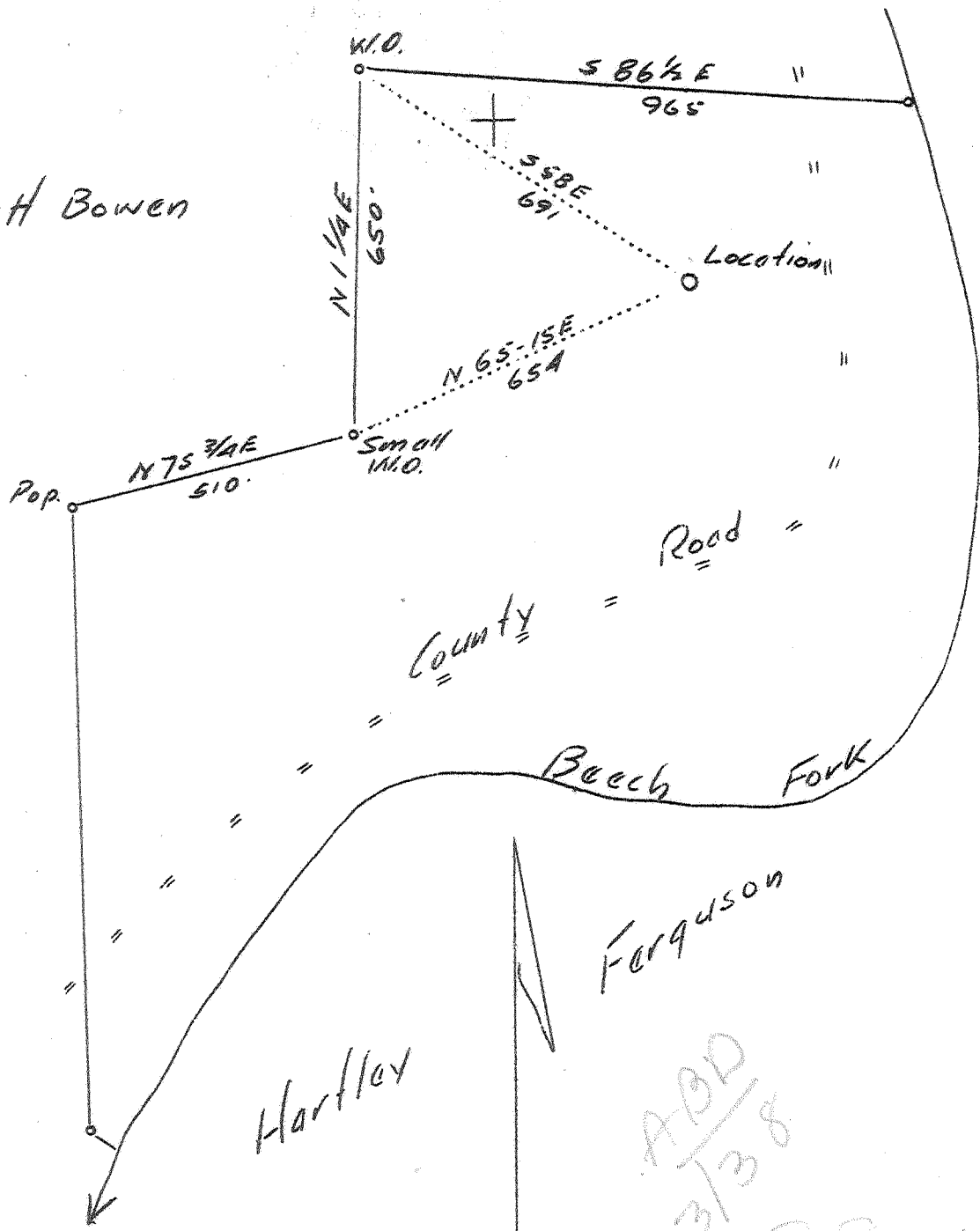
LONGITUDE 82° 15'

Virgil Lusher

OH Adkins

Jett Bowen

John Morrison



ADD 3/38

3.87 W

20 P

VALLEY P 685

Company	Mountaineer Natural Gas Co.
Address	Hamlin, W.Va.
Farm	Hurston Adkins & Wife
Tract	Acres 33 Lease No.
Well (Farm) No.	1 Serial No.
Elevation (Spirit Level)	650
Quadrangle	Guyandotte SE
County	Wayne District Union
Engineer	H.W. Carper Jr.
Engineer's Registration No.	788
File No.	Drawing No.
Date	June 5, 1937 Scale 1"-300'

STATE OF WEST VIRGINIA
 Department of Mines
 OIL AND GAS DIVISION
 CHARLESTON

WELL LOCATION MAP
 File No. WAY-113

+ Denotes location of well on United States Topographic Maps, scale 1 to 62,500, latitude and longitude lines being represented by border lines as shown.

— Denotes one inch spaces on border line of original tracing.

650 (23) Deep Well

WEST VIRGINIA DEPARTMENT OF MINES

OIL & GAS DIVISION

WELL RECORD

Permit No. Way-113

Gas Well

Guyandotte Quad.

CASING & TUBING

Company	Mountaineer Natural Gas Co.	10	25-4	25-4
Address	Hamlin, W. Va.	8-1/4	405	405
Farm	Hurston Adkins ACRES 33	6-5/8	1805-2	1805-2
Location	Beech Fork	No packer		
Well No.	1 ELEV. 650			
District	Union - Wayne County			
Surface & Mineral	Hurston Adkins, Barboursville, W.Va.			
Drilling commenced	June 15, 1937			
Drilling completed	Aug. 23, 1937			
Date Shot	8/23/37 - Depth 2765-3624			
Open Flow	2/10ths water in 1 inch			
Volume	17,000 c.f.			
Rock Pressure	280 lbs. 72 hrs.			
Fresh Water	-			
Salt Water	1050			

Formation Color ^{Mar} 5 Top Base Result Formation Color ^{Mar} 5 Top Base Result

Formation	Color	^{Mar} 5	Top	Base	Result	Formation	Color	^{Mar} 5	Top	Base	Result
Red Clay		s	0	25							
Slate & Red Rock		s	25	425							
Broken Sand		s	425	610							
Slate & Shells		s	610	650							
Sand		h	650	715							
Slate & Shells		s	715	965							
Sand		h	965	990							
Slate & Shells		s	990	1050							
Salt Sand		h	1050	1170	No oil or gas						
Slate		s	1170	1175							
Sand		h	1175	1340							
Slate		s	1340	1412							
Red Rock		h	1412	1415							
Slate & Shells		s	1415	1444							
Little Lime		h	1444	1470							
Pencil Cave		s	1470	1474							
Big Lime		h	1474	1632	No oil or gas						
Slate		s	1632	1647							
Keener Sand		h	1647	1720							
Big Injun		s	1720	1800	No oil or gas						
Shell		s	1800	1825							
Slate		s	1825	1870							
Shells		h	1870	1890							
Slate & Shells		h	1890	2040							
Shells		h	2040	2070							
Slate & Shells		h	2070	2267							
Coffee Shale		s	2267	2282							
Berea Sand		h	2282	2297	No oil or gas						
Slate		s	2297	2320							
Brown Shale		s	2320	2430							
White Slate		s	2430	2750							
Gray Shale		s	2750	2785							
Brown Shale		s	2785	2865							
Gray Shale		s	2865	2890							
Brown Shale		s	2890	2915							
White Slate		s	2915	2975							
Brown Shale		s	2975	3040							
White Slate		s	3040	3080							
Brown Shale		s	3080	3313							
Brown Shale		s	3080	3313	Gas showing						
White Slate		s	3313	3527							
Brown Shale		s	3527	3624							
Carboniferous		h	3624	3626							

650
610

1720
1800

No oil or gas found in paying quantities above the Devonian Shale in this vicinity or field known as Beech Fork Field