

LATITUDE 38° 15'

82° 30'  
LONGITUDE

T'S OGIS topo location

7.5' loc	<u>2.46</u>	15' loc	<u>2.46</u>
	<u>0.13</u>	(calc.)	<u>0.13</u>

Company \_\_\_\_\_

Farm \_\_\_\_\_

Quad Prichard Louisa

County Wayne NE

District Union

WELL LOCATION MAP

File No. Way-59

Plot of Proposed Location of Thompson Well No. 1 of the Charlton Oil Company of Pittsburgh Pa. on the Freelin Thompson farm consisting of 150 Acres Located in Butler District, Wayne County.

G. W. RONK

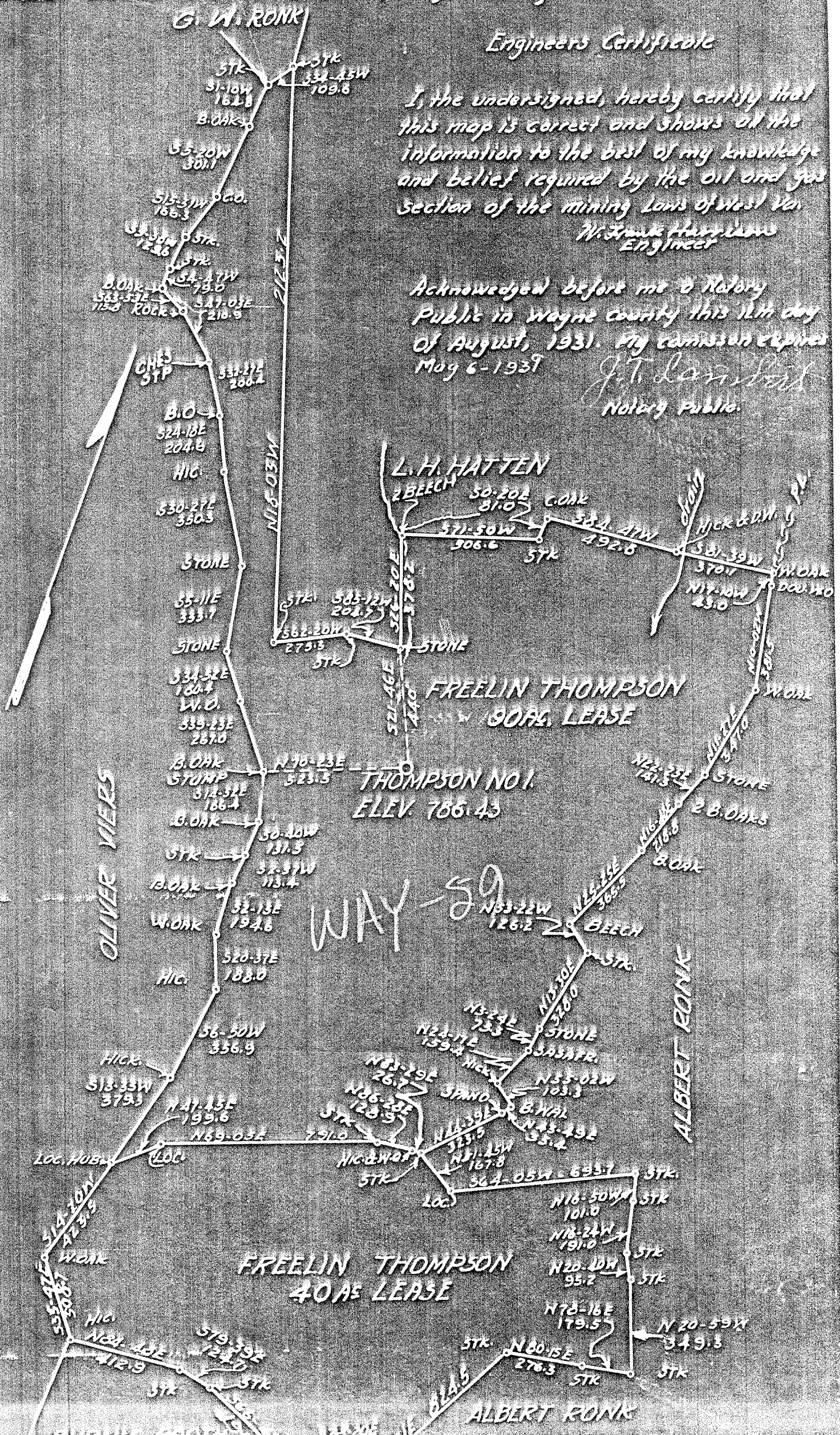
Engineers Certificate

I, the undersigned, hereby certify that this map is correct and shows all the information to the best of my knowledge and belief required by the oil and gas section of the mining laws of West Va.

W. Frank Harrison  
Engineer

Acknowledged before me a Notary Public in Wayne county this 12th day of August, 1931. My commission expires May 6-1937

J. T. Lantz  
Notary Public.



WEST VIRGINIA DEPARTMENT OF MINES

Oil and Gas Section

PRELIMINARY DATA SHEET NO. 1

File No. WAY-59

Well No. 1.

The Chartiers Oil Company of 808 Columbia Bldg.,

Pittsburgh, Penna., on ththe Freelin Thompson, Farm

containing 150 acres. Location

Butler District, in Wayne County, West Virginia.

The surface of the above tract is owned in fee by Freelin Thompson

of R.F.D.#2, Prichard, West Va. address, and the mineral rights are owned by

Freelin Thompson of R.F.D.#2, Prichard, West Va.

The oil and gas privileges are held under lease by the above named company, and this well is drilled under permit No. Wayne #59 issued by the West Virginia Department of Mines, Oil and Gas Section,

September 18th, 1931. 19

Elevation of surface at top of well, 786.43 Spirit Barometric.

The number of feet of the different sized casings used in the well.

feet size. Wood conductor.

94 feet 10" size. csg. 1226 feet 8 1/2" sized csg.

2077 feet 6-5/8" size. csg. 3376 feet 5-3/16" sized csg.

feet size. csg. feet sized csg.

Anchor Paramaco packer of 6-5/8" x 8 1/2" size, set at 2005 ft.

Bottom Hole packer of 5-3/16" x 6-5/8" size, set at 3791 ft.

in casing perforated at feet to feet.

in casing perforated at feet to feet.

Coal was encountered at 518 feet; thickness 3 ft. inches, and at

feet; thickness inches; and at feet; thickness inches.

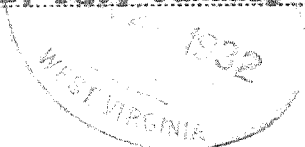
Liners were used as follows: (Give details)

Pittsburgh, Pa., January 21st, 1932.

Date.

Approved The Chartiers Oil Company, Owner.

By J.M. Brown Asst. Treas. (Title)



FREELIN

~~WATER~~ (WATER) THOMPSON NO. 1 WELL.

By Chertiers Oil Co.

Butler District, Wayne County, N. Va.

On west side of Patrick Creek 2 mi. above its junction with West Fork of Twelvepole Creek and 3 1/2 miles S. 80° W. of Wayne.

Completed, January 21, 1932.

Elevation, 786' L.

	Top. Feet.	Bottom. Feet.
Clay, yellow, soft	0	20
Clay, white, soft	20	35
Sand, white, soft	35	40
Shale, white, soft	40	70
Sand, white, soft	70	80
Shale, light, soft	80	100
Red rock, soft	100	115
Lime shells, dark, hard	115	180
Sand, Big Injua, Mahoning, white, soft	180	195
Shale, light, soft	195	220
Sand, dark, hard	220	255
Slate, white, soft	255	320
Sand, dark, hard	320	340
Slate, white, soft	340	345
Sand, Second Cow Run, Herndon, white, soft.	345	435
Slate, black, soft	435	480
Lime shells, dark, hard	480	490
Slate, black, soft	490	518
Coal, Coalburg	518	521
Slate, black, soft	521	664
Lime shells, dark, soft	664	734
Slate, dark, soft	734	750
Sand, Salt, white, soft	750	780
Slate, white, soft	780	810
Sand, Salt, white, hard	810	835
Sand and shells, dark, soft	835	900
Sand, Salt, white, hard (salt water, 925' hole full)	900	1055
Slate, dark, soft	1055	1060
Sand, Salt, dark, hard	1060	1110
Slate and lime shell, dark, hard	1110	1132
Red rock, soft	1132	1172
Slate, white, soft	1172	1183
Little Lime, dark, hard	1183	1206
Pencil Cave, dark, soft	1206	1209
Big Lime, white, hard	1209	1379
Sand, Big Injua (little gas, 1426')	1379	1565
Slate and shale	1565	2009
Sand, Berea, dark, hard (oil, 11 gal. in 2 hr.)	2009	2019
Sand shells, dark, hard	2019	2050
Sand, hard, broken	2050	2075
Slate, white, soft	2075	2085
Sand shells, white, hard	2085	2097
Slate, white, soft	2097	2110
Shale, brown, soft	2110	2254
Shale, white, hard	2254	2310

	Top. Feet.	Bottom. Feet.
Shale, brown, soft . . . . .	2310	2335
Shale, white, hard . . . . .	2335	2360
Shale, brown, soft (little gas, 2450-2460') .	2360	2510
Shale, white, hard . . . . .	2510	2541
Shale, brown, hard (small gas show, 2670-2690') . . . . .	2541	2740
Slate, white, soft . . . . .	2740	2750
Shale, brown, soft . . . . .	2750	2838
Shale, white, soft . . . . .	2838	3041
Lime, white, hard . . . . .	3041	3045
Shale, brown, soft . . . . .	3045	3071
Lime, hard, Onondaga, Niagara, etc. (little acid water, 3176-3180'; poisonous gas, 3270-3272'; gas pay, 3769 $\frac{1}{2}$ -3786 $\frac{1}{2}$ ') . .	3071	3791
Total depth . . . . .		3791

553

10" casing, 94'; 8 $\frac{1}{4}$ " casing, 1226'; 6-5/8" casing, 2077';  
5-3/16" casing, 3376'.

Anchor Par. packer, 6-5/8" x 8 $\frac{1}{4}$ " set at 2005'.  
Bottom hole packer, 5-3/16" x 6-5/8", set at 3791'.  
Gas well: 994,000 cu. ft.

WAY-57

The Chartiers Oil Company

COMPLETION DATA SHEET

808 Columbia Bldg., Address

NO. 2

Pittsburgh, Penna.

FORMATION RECORD

Name	Color	Character	Oil, Gas or Water	Top	Bottom	Thickness	Total Depth	Remarks
Clay	Yellow	Soft		0	20			
Clay	White	Soft		20	35			
Sand	White	Soft		35	40			
Shale	White	Soft		40	70			
Sand	White	Soft		70	80			
Shale	Light	Soft		80	100			
10" Casing					94			
Red Rock	Red	Soft		100	115			
Lime Shells	Dark	Hard		115	180			
Sand	White	Soft		180	195			
Shale	Light	Soft		195	220			
Sand	Dark	Hard		220	255			
Slate	White	Soft		255	320			
Sand	Dark	Hard		320	340			
Slate	White	Soft		340	345			
Sand	White	Soft		345	435			
Slate	Black	Soft		435	480			
Lime Shells	Dark	Hard		480	490			
Slate	Black	Soft		490	518			
Coal	Black	Soft		518	521			
Slate	Black	Soft		521	664			
Lime Shells	Dark	Soft		664	734			
Slate	Dark	Soft		734	750			
Sand	White	Soft		750	780			
Slate	White	Soft		780	810			
Sand	White	Hard		810	835			
Sand & Shells	Dark	Soft		835	900			
Salt Sand	White	Hard		900	1055			
Water hole full					925			
Slate	Dark	Soft		1055	1060			
Sand	Dark	Hard		1060	1110			
Slate & Lime Shell	Dark	Hard		1110	1132			
Red Rock	Red	Soft		1132	1172			
Slate	White	Soft		1172	1183			
Little Lime	Dark	Hard		1183	1206			
Pencil Cave	Dark	Soft		1206	1209			
Big Lime	White	Hard		1209	1379			S.L.M.
8 1/4" 24# casing, steel line measurement					1226			
Big Injun Sand	White	Soft		1379	1565			
Little Gas at					1426			
Slate & Shale	Dark	Soft		1565	2009			
Berea Grit	Dark	Hard		2009	2019			

way-59

The Chartiers Oil Company  
 808 Columbia Bldg., Address  
 Pittsburgh, Penna.

COMPLETION DATA SHEET  
 NO. 2  
 FORMATION RECORD

Name	Color	Character	Oil, Gas or Water	Top	Bottom	Thickness	Total Depth	Remarks
Area Grit	tested 11 gal.	Oil in 2 hrs.						
and Shells	Dark	Hard		2019	2050			
and broken	Black	Hard		2050	2075			
late	White	Soft		2075	2085			
5-8" 17# casing	(Steel shoe on bottom)				2077			
and Shells	White	Hard		2085	2097			
late	White	Soft		2097	2110			
rown Shale	Brown	Soft		2110	2254			
hale	White	Hard		2254	2310			
hale	Brown	Soft		2310	2335			
hale	White	Hard		2335	2360			
hale	Brown	Soft		2360	2510			
ittle gas from				2450	2460			
hale	White	Hard		2510	2541			
hale	Brown	Hard		2541	2740			
small show of gas from				2670	2690			
late	White	Soft		2740	2760			
Shale	Brown	Soft		2750	2838			
Shale	White	Soft		2838	3041			
Lime	White	Hard		3041	3045			
Shale	Brown	Soft		3045	3071			
Niagra Lime	Light	Hard		3071	3791			
5-3/16" 20# casing,	steel shoe on bottom				3376			
Little acid water				3176	3180			
Poisonous Gas				3270	3272			
Top of pay, steel line measurement					3769 1/2			
Pay from					3786 1/2			
Bottom hole					3791			

Onondaga - Held - Salina  
 S.L.M.

553

Well was not shot ~~at~~ feet; well was shot at ..... feet.

Salt water at 925 feet; salt fresh water at ..... feet.

Well was producing hole.

THE CHARTIERS OIL COMPANY

January 19th, 1932.  
 Date

Approved

*J.M. Brown*

Owner Asst. Treas.

NOTE: All bottom formations must be noted as indicated above and all key-rocks and oil and gas sands must be recorded under their proper geological names in the district as well as any local names commonly used in the district for such strata.