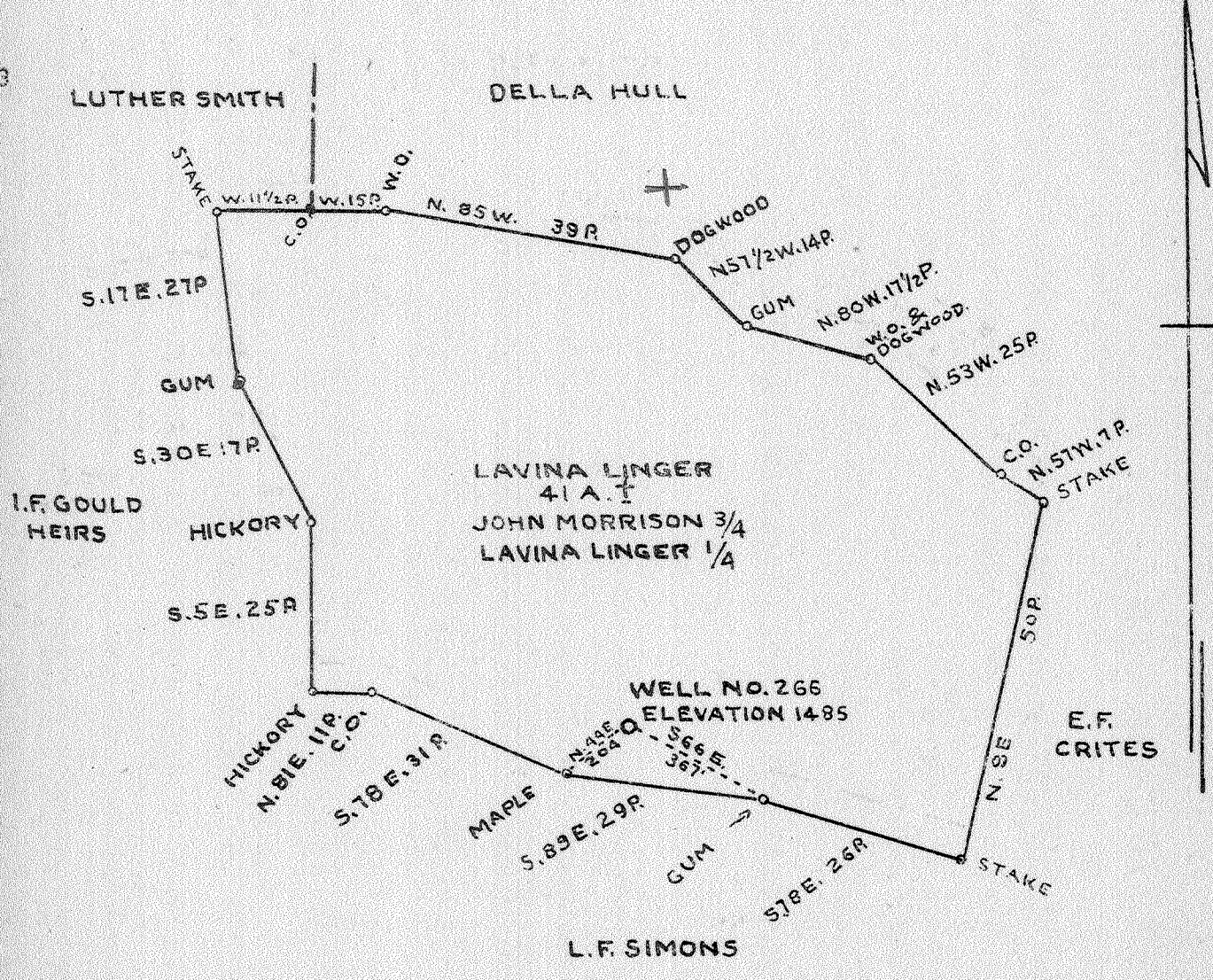


0 1 2 3

Latitude 39 00

**199 in Upshur Co Rep*

Longitude 80 15



COAL IS OWNED BY JOHN MORRISON AND MERLE FERGUSON

3.68 W
3.86

JUN 23 1941

New Location...
Drill Deeper...
Abandonment...

Company **CUMBERLAND AND ALLEGHENY GAS CO.**
 Address **800 UNION TRUST BLDG. PITTSBURGH PA.**
 Farm **LAVINA LINGER ET AL.**
 Tract Acres **41** Lease No. **242**
 Well (Farm) No. **1** Serial No. **266**
 Elevation (Spirit Level) **1485'**
 Quadrangle **CRAWFORD N.E. 1/4**
 County **UPSHUR** District **BUCKHANNON**
 Engineer *Jenkins*
 Engineer's Registration No. _____
 File No. _____ Drawing No. **Y-10-148**
 Date **JUNE 11 - 194** Scale **1" = 400'**

STATE OF WEST VIRGINIA
 DEPARTMENT OF MINES
 OIL AND GAS DIVISION
 CHARLESTON

WELL LOCATION MAP
 File No. **UP-8A**

Was 097 70096
 Denotes location of well on United States Topographic Maps, scale 1 to 62,500, latitude and longitude lines being represented by border lines as shown.

— Denotes one inch spaces on border line of original tracing.

LAVINA LINGER ET AL. No. 1 (766) - CUMBERLAND & ALLEGHENY GAS CO. — UP-8-A
 Abhatt-French Creek (189)

STATE OF WEST VIRGINIA
DEPARTMENT OF MINES
OIL AND GAS DIVISION

76

WELL RECORD

Permit No. Drilled in 1908 by
Buckhannon Relief Oil & Gas Co.

Oil or Gas Well Gas
(KIND)

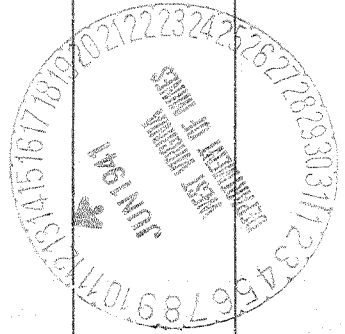
Company Cumberland and Allegheny Gas Co.
Address 800 Union Trust Bldg., Pittsburgh, Pa.
Farm Lavina Linger Acres 1.2
Location (waters).....
Well No. 1 - 266 Elev. 1485 ft.
District Buckhannon County Upshur
The surface of tract is owned in fee by John Morrison
R. D. 3 Address Buckhannon, WVa
Mineral rights are owned by Cumberland and Allegheny
Gas Company Address Pittsburgh, Pa.
Drilling commenced ?
Drilling completed ?
Date shot..... Depth of shot.....
Open Flow /10ths Water in..... Inch
/10ths Merc. in..... Inch
Volume..... Cu. Ft.
Rock Pressure..... lbs..... hrs.
Oil..... bbls., 1st 24 hrs.
Fresh water..... feet..... feet
Salt water..... feet..... feet

Casing and Tubing	Used in Drilling	Left in Well	Packers
Size			
16			Kind of Packer.....
13			
10			Size of.....
8 1/4			
6 5/8	In well,		Depth set.....
5 3/16	but do not		
3	know amount		Perf. top.....
2			Perf. bottom.....
Liners Used.....			Perf. top.....
			Perf. bottom.....

CASING CEMENTED..... SIZE..... No. Ft..... Date
COAL WAS ENCOUNTERED AT None FEET..... INCHES
FEET..... INCHES..... FEET..... INCHES
FEET..... INCHES..... FEET..... INCHES

Formation	Color	Hard or Soft	Top	Bottom	Oil, Gas or Water	Depth Found	Remarks
Big Lime			1433	1472			
Big Injun			1472	1626	Gas 1478 ft.		
Squaw Sand			1630	1670	Show of oil 1490 ft.		
Sand			1685	1704	Oil and water 1650 ft.		
Weir			1723	1758			
Sand			1767	1800			
Berea Sand			1810	1877			
50-Foot Sand			1990	1996			
30-Foot Sand			2052	2066	Show of oil at 2058 - also gas		
Gordon			2152	2186			
Gas			2154	2164	Gas 2154 - 2164		
Fourth Sand			2226	2230			
Bayard Sand			2397	2400			
Total depth				2410			

See also pgs. 351 - 353,
Barbour, Upshur, Randolph
Co reports; #49 on BUR map



LATITUDE 38° 57' 30"

A 1343



CRAWFORD NE

0.995
1.31W



LONGITUDE 80° 17' 30"

7'5 OGIS topo location

7.5' loc _____ 15' loc _____
(calc.) _____

Company _____

Farm Louilla Linger #2

Quad Adrian 7 1/2

County Upshur

District Buckhannon

WELL LOCATION MAP

File No. 097-70096

NW 097 30008