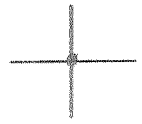


LATITUDE 38° 55'



2.22
0.92
08° 08' LONGITUDE

7.5 OGIS topo location

7.5' loc _____ 15' loc _____
(calc.) _____

Company Hope

Farm Hazen Phillips # 2658

Quad Crawford 15'

County Upshur

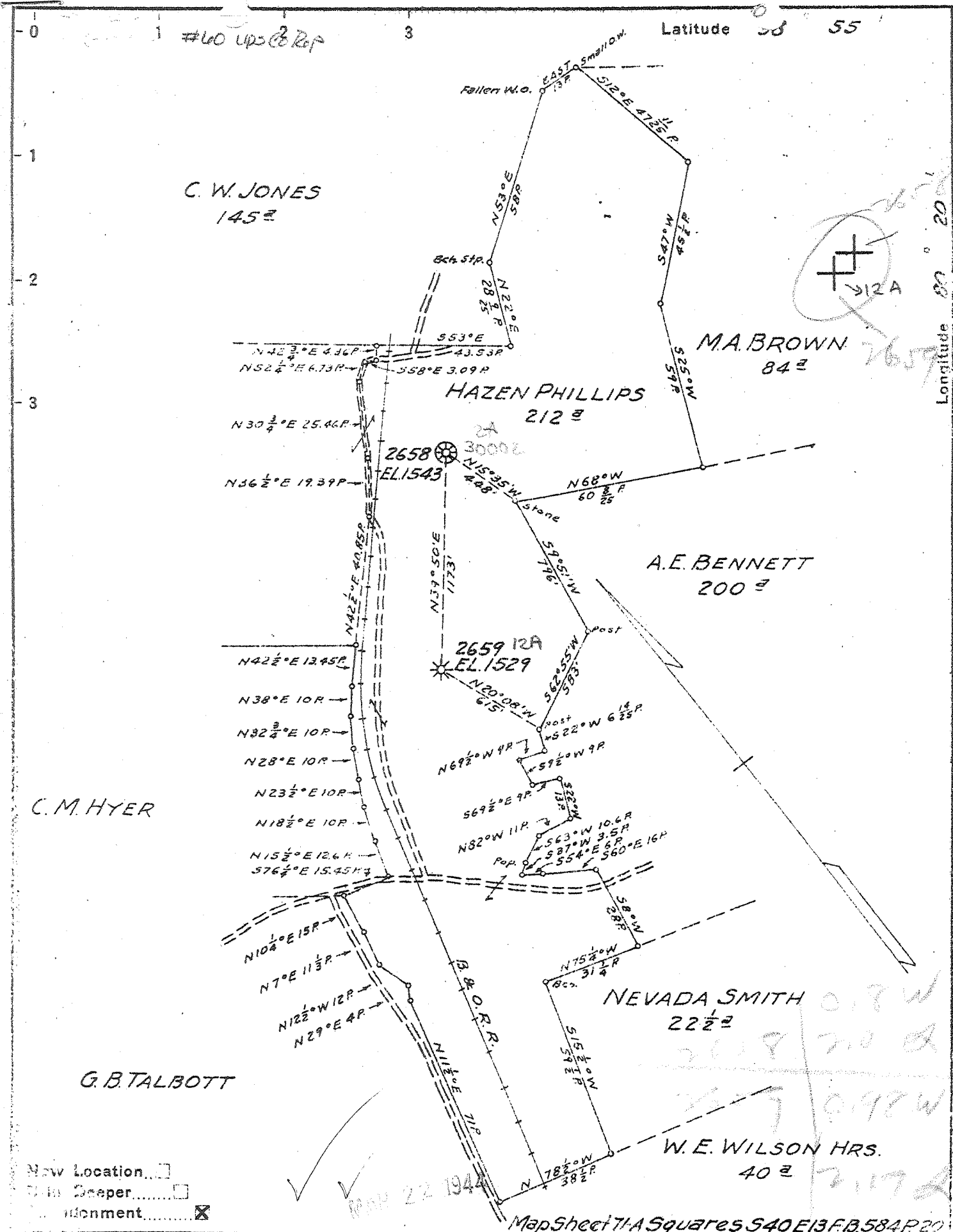
District Banks

See 097 30012 - prop. map

WELL LOCATION MAP

File No. 097-30002

map # 61 on Upshur
County Report map.



Company HOPE NATURAL GAS CO.
 Address CLARKSBURG, W. VA.
 Farm HAZEN PHILLIPS
 Acres 212 Lease No. 24809
 (Farm) No. _____ Serial No. 2658-2659
 Elevation (Spirit Level) 1543 - 1529
 Township CRAWFORD
 County UPSHUR District BANKS
 Engineer W.M. Bowers
 Engineer's Registration No. 900
 File No. _____ Drawing No. _____
 Date MARCH 9, 1944 Scale 1" = 40 P

STATE OF WEST VIRGINIA
 DEPARTMENT OF MINES
 OIL AND GAS DIVISION
 CHARLESTON

WELL LOCATION MAP
 FILE NO. Ups-12-A

WED 097 70056
 + Denotes location of well on United States Topographic Maps, scale 1 to 62,500, latitude and longitude lines being represented by border lines as shown.
 - Denotes one inch spaces on border line of original tracing.

PHILLIPS, HAZEN, NO. 2658.

Up-2-A.

By Hope Natural Gas Co.

Banks Dist.

Im. Remita - D.F. Nos. 8 & 39

LATITUDE 38° 55' 00"

A 2061



CRAWFORD ME

1.902
0.74W



02° 08' 00" LONGITUDE

7'5 OGIS topo location

7.5' loc _____ 15' loc 1.905
(calc.) 0.74W

Company _____

Farm P. F. Hyre #3

Quad Adrian 7 1/2 / Crawford C

County Upsher

District Banks

WELL LOCATION MAP

File No. 097 - 70057

097 30002