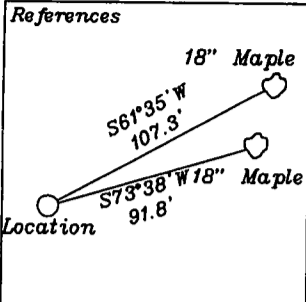


Top Hole 4,573'

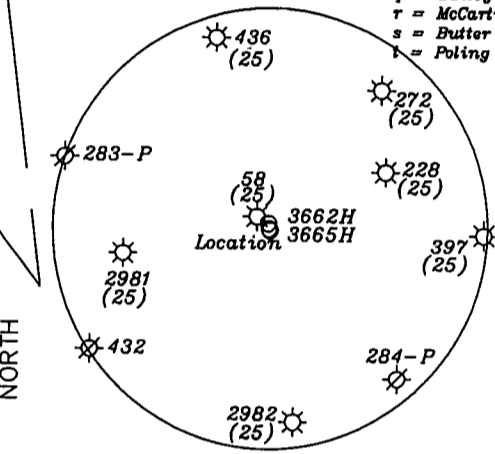
Bottom Hole 2,414'

LATITUDE 39-00-00 N (TH)
LATITUDE 38-57-30 N (BH)



- C = Warner 5.09 Ac.
- D = Whitsitt 4 Ac. TM.5H/1.3
- E = Browning 0.75 Ac. TM.5H/1.2
- F = Shipley 5.42 Ac. TM.5H/1.1
- G = Trust of Light Church Chapel 3.15 Ac. TM.5H/2.1
- H = Stonegate Estates Approx. 53.21 Ac.
- I = Randolph 2.74 Ac. TM.4H/55.1
- J = Gemmill 4.36 Ac. TM. 4H/50
- K = Hoover 6.51 Ac. TM.5H/2.2
- L = White 2.98 Ac. TM.5H/3.2
- Lease # (1-302884-000)
- M = Hayes 2 Ac. TM.5H/3.5
- N = Willis 1.686 Ac. TM.5H/3.10
- O = Willis 6.217 Ac. TM.5H/3.4
- a = Hollen 2.01 Ac. TM.6H/33.11 & 33.24
- b = Mills 2.67 Ac. TM.5H/33.22 & 33.23
- c = Honeycut 1.29 Ac. TM.5H/33.21
- d = Metzner 0.966 Ac. TM.5H/33.8
- e = Smith 1.55 Ac. TM.5H/33.1
- f = Tallman 1.86 Ac. TM.5H/33.10 & 33.14
- g = Westfall 1.95 Ac. TM.5H/33.17
- h = Coberty 1.37 Ac. TM.5H/33.6 & 33.13
- i = Crose 1.53 Ac. TM.5H/33.20
- l = Honeycut 0.66 Ac. TM.5H/33.9
- m = Walmsley 0.7 Ac. TM.5H/33.5
- n = Snyder 0.67 Ac. TM.5H/33.16
- o = Hardasty 1 Ac. TM.5H/33.7 & 33.15
- p = Honeycut 0.66 Ac. TM.5H/33.9
- q = Bailey 0.88 Ac. TM.5H/33.2
- r = McCartney 0.53 Ac. TM.5H/33.3
- s = Butler TM.5H/33.4 & 33.18
- t = Poling 4.45 Ac. TM.5H/33

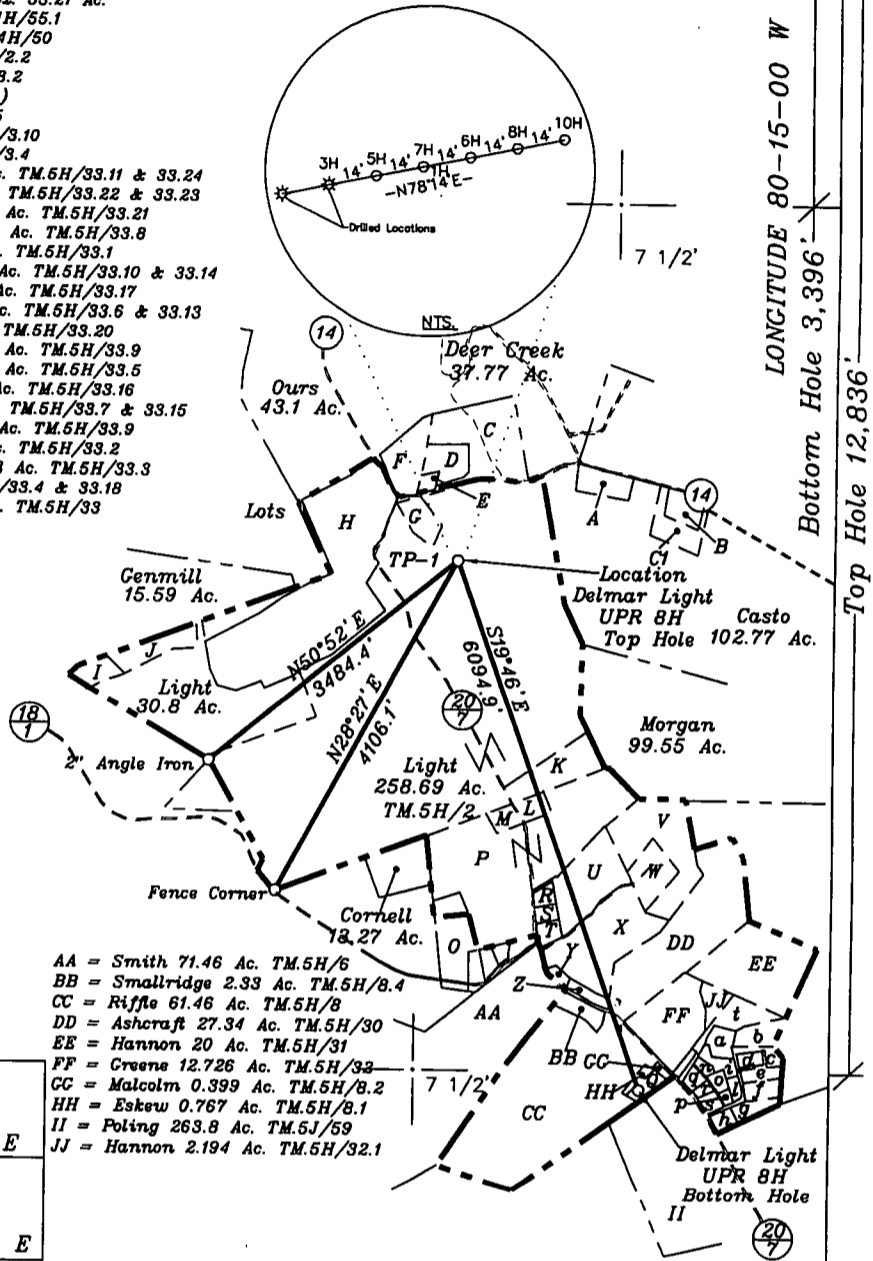
- P = McCowan 48.55 Ac. TM.5H/3.1
- Lease # (1-212707-000)
- Q = Phillips 1.541 Ac. TM. 5H/8.3
- R = Peggs 1 Ac. TM. 5H/10.8
- S = Peggs 1 Ac. TM. 5H/10
- T = Peggs 1.5 Ac. TM. 5H/10.9
- U = Clevenger 17.63 Ac. TM. 5H/10.7
- V = Heavner 16.12 Ac. TM. 5H/10.5
- W = Heavner 5.37 Ac. TM. 5H/10.3
- X = Clevenger 17.63 Ac. TM. 5H/10.4
- Y = Smith 1.13 Ac. TM. 5H/10.2 & 10.6
- Z = Snyder 1.303 TM. 5H/9.1, 9.2, 10.1



Notes: Ties to wells and corners are based on State Plane Grid North-WV South Zone NAD 27.

Top Hole
NAD 27-38.964856 N, 80.265670 W
UTM NAD 83-14150706.9 N, 1849194.0 W
State Plane NAD 27-716319.7 N, 2208811.7 E

Bottom Hole
NAD 27-38.949063 N, 80.258584 W
UTM NAD 83-14144973.6 N, 1851255.2 W
State Plane NAD 27-710583.9 N, 2210872.8 E



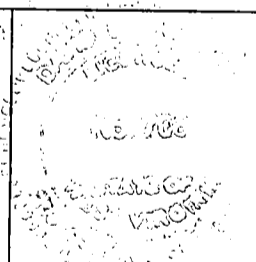
- AA = Smith 71.46 Ac. TM.5H/6
- BB = Smallridge 2.33 Ac. TM.5H/8.4
- CC = Riffe 61.46 Ac. TM.5H/8
- DD = Ashcraft 27.34 Ac. TM.5H/30
- EE = Hannon 20 Ac. TM.5H/31
- FF = Creene 12.726 Ac. TM.5H/32
- GG = Malcolm 0.399 Ac. TM.5H/8.2
- HH = Eskew 0.767 Ac. TM.5H/8.1
- II = Poling 263.8 Ac. TM.5H/59
- JJ = Hannon 2.194 Ac. TM.5H/32.1

(+) DENOTES LOCATION OF WELL ON UNITED STATES TOPOGRAPHIC MAPS

FILE NO. _____
DRAWING NO. 1
SCALE 1" = 2,000'
MINIMUM DEGREE OF ACCURACY 1 in 2500
PROVEN SOURCE OF ELEVATION Mine Control
Point 70-elev. 1692.6'

I THE UNDERSIGNED, HEREBY CERTIFY THAT THIS PLAT IS CORRECT TO THE BEST OF MY KNOWLEDGE AND BELIEF AND SHOWS ALL THE INFORMATION REQUIRED BY LAW AND THE REGULATIONS ISSUED AND PRESCRIBED BY THE DEPARTMENT OF ENERGY

(SIGNED) David D. Johnson
R.P.E. _____ L.L.S. 708



STATE OF WEST VIRGINIA
Division of Environmental Protection
OFFICE OF OIL AND GAS

DATE May 02, 2011
OPERATOR'S WELL NO. Delmar Light UPR 8H
API WELL NO. 47 097 03800H

WELL TYPE: OIL GAS LIQUID INJECTION X WASTE DISPOSAL _____
(IF "GAS") PRODUCTION X STORAGE _____ DEEP _____ SHALLOW X

LOCATION: ELEVATION 1,745' WATER SHED Lick Run and Stony Run
DISTRICT Buckhannon COUNTY Upshur

QUADRANGLE Adrian 7 1/2'

SURFACE OWNER Delmar & Alice Light ACREAGE 258.69 ac.
OIL & GAS ROYALTY OWNER John R. Shomo, David D. Johnson, Donna J. Johnson, & Kelly K. Johnson LEASE ACREAGE 443.634 ac.

LEASE NO. 3-051400-000 (TM. 5H-2, 2.1, 2.2), 1-302884-000 (TM. 5H-3.2), 1-212707-000 (TM. 5H-3, 3.1, 3.10) & 3-050245-000 (TM. 5H-8.0, thru 8.4), 1-311521-000 (TM.5H-32)

PROPOSED WORK: DRILL X CONVERT _____ DRILL DEEPER _____ REDRILL _____ FRACTURE OR STIMULATE _____ PLUG OFF OLD FORMATION _____ PERFORATE NEW FORMATION X OTHER PHYSICAL CHANGE IN WELL (SPECIFY) _____
PLUG AND ABANDON _____ CLEAN OUT AND REPLUG _____

TARGET FORMATION Marcellus ESTIMATED DEPTH 7,540'+ Horizontal Leg

WELL OPERATOR Chesapeake Appalachia, L.L.C. DESIGNATED AGENT Eric B. Gillespie
ADDRESS P.O. Box 18496 Oklahoma City, OK 73154-0496 ADDRESS P.O. Box 6070 Charleston, WV 25362

LONGITUDE 80-15-00 W
Bottom Hole 3,396'
Top Hole 12,836'

CANCELLED

COUNTY NAME PERMIT



west virginia department of environmental protection

Office of Oil and Gas
601 57th Street SE
Charleston, WV 25304
(304) 926-0450
(304) 926-0452 fax

Earl Ray Tomblin, Governor
Randy C. Huffman, Cabinet Secretary
www.dep.wv.gov

November 15, 2012

FINAL INSPECTION REPORT

Horizontal Well Permit Cancelled

CHESAPEAKE APPALACHIA, L.L.C.,

The FINAL INSPECTION REPORT for the CANCELLED permit, API Well Number: 47-9703800, issued to CHESAPEAKE APPALACHIA, L.L.C., and listed below has been received in this office. The permit has been cancelled as of 11/15/2012.

James Martin
Chief

Operator: CHESAPEAKE APPALACHIA, L.L.C.
Operator's Well No: DELMAR LIGHT UPR 8H
Farm Name: LIGHT, DELMAR & ALICE
API Well Number: 47-9703800
Date Issued: 09/15/2011

Date Cancelled: 11/15/2012

Promoting a healthy environment.