

WW-7

8-30-06



West Virginia Department of Environmental Protection
Office of Oil and Gas
WELL LOCATION FORM: GPS

API:47-097-03331

WELL NO.: 626235

FARM NAME: Coastal Lumber Company

RESPONSIBLE PARTY NAME: SWN Production Co., LLC

COUNTY: Upshur DISTRICT: Banks

QUADRANGLE: Goshen

SURFACE OWNER: Coastal Forest Resources Co.

ROYALTY OWNER: Chesapeake Appalachia LLC

UTM GPS NORTHING: 4285037.4

UTM GPS EASTING: 563369.6

GPS ELEVATION: 2579'

The Responsible Party named above has chosen to submit GPS coordinates in lieu of preparing a new well location plat for a plugging permit or assigned API number on the above well. The Office of Oil and Gas will not accept GPS coordinates that do not meet the following requirements:

1. Datum: NAD 1983, Zone: 17 North, Coordinate Units: meters, Altitude: height above mean sea level (MSL) – meters.
2. Accuracy to Datum – 3.05 meters
3. Data Collection Method:

Survey grade GPS : Post Processed Differential
Real-Time Differential

Mapping Grade GPS : Post Processed Differential
Real-Time Differential

4. **Letter size copy of the topography map showing the well location.**

I the undersigned, hereby certify this data is correct to the best of my knowledge and belief and shows all the information required by law and the regulations issued and prescribed by the Office of Oil and Gas.

Signature

Date

5/14/15

Title

Kevin J. Perdue

9703331P

Received

Topographical Map of Well 626235 (Coastal Forest Resources Co 1)

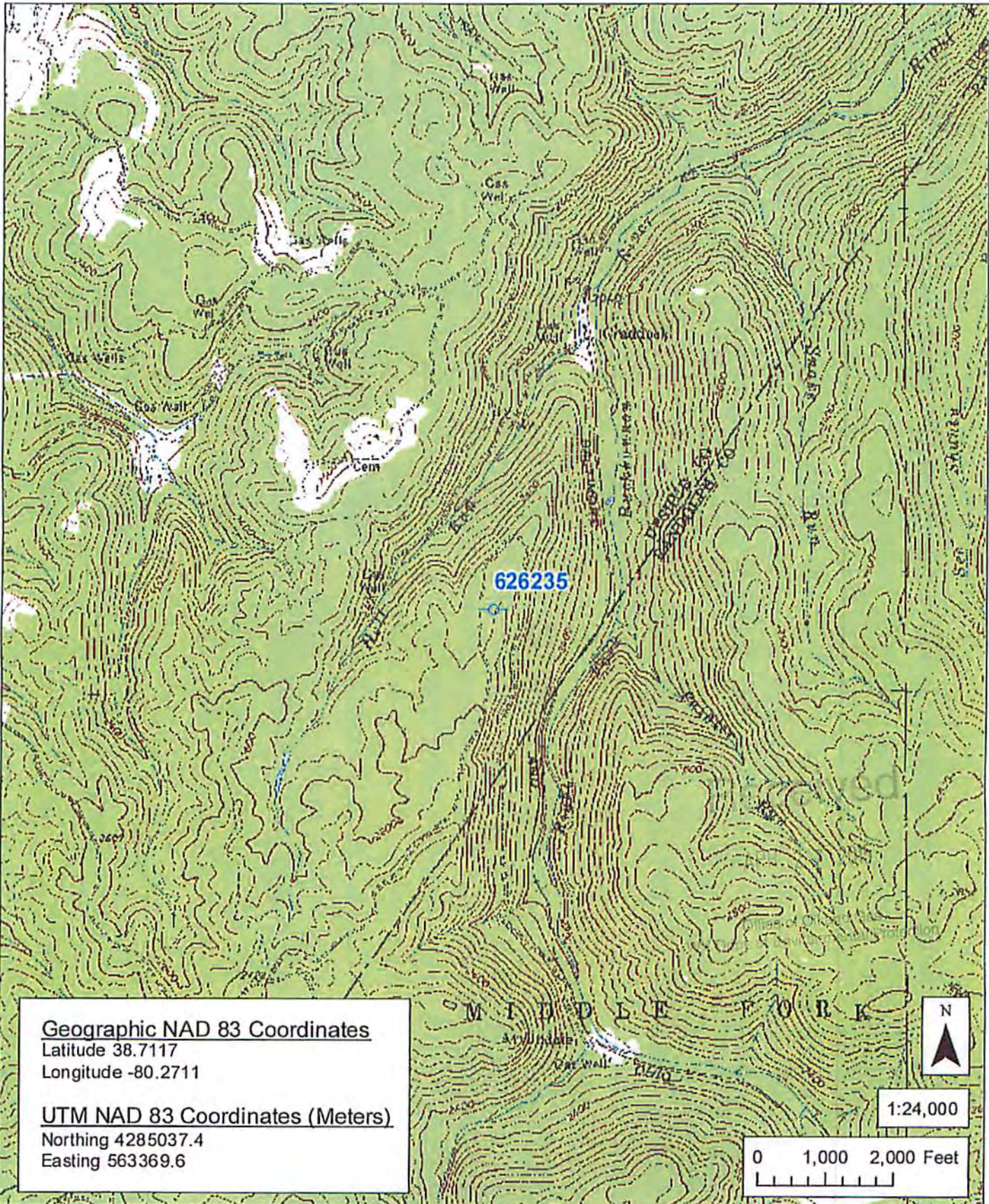
API = 47-97-3331

Field Office - Jane Lew

County - Upshur

APR 27 2015

Office of Oil and Gas
WV Dept. of Environmental Protection



Geographic NAD 83 Coordinates
 Latitude 38.7117
 Longitude -80.2711

UTM NAD 83 Coordinates (Meters)
 Northing 4285037.4
 Easting 563369.6



1:24,000

