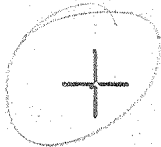


Latitude 39° 15'

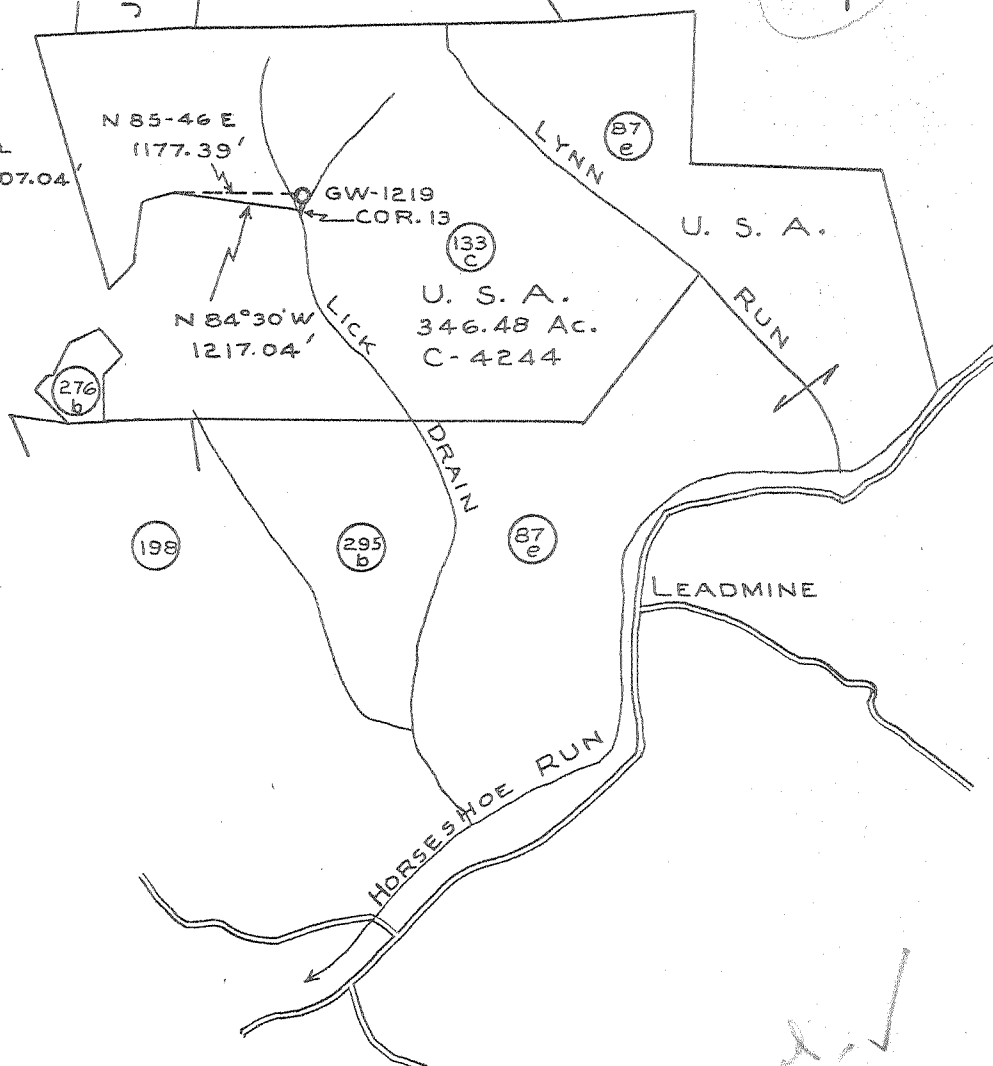
Longitude 79° 35'

JOHN HANS BELING

3.055
0.80W
2 EC
3.06-S
0.78-W



NOTE:
FROM COR. 13 GAS WELL
LOCATION IS N10°22'W 207.04'



Fractured
12-12-55 ✓

- New Location...
- Drill Deeper.....
- Abandonment.....

Company COLUMBIAN CARBON Co.
 Address Box 873 CHARLESTON, W. VA.
 Farm UNITED STATES OF AMERICA
 PART OF 1109.32 AC.
 Tract 133-C Acres 346.48 Lease No. C-4244
 Well (Farm) No. D-1 Serial No. GW-1219
 Elevation (Spirit Level) 2072.99 FT.
 Quadrangle PARSONS 2-NE W-080 S-305
 County TUCKER District ST. GEORGE
 Engineer _____
 Engineer's Registration No. 2074
 File No. _____ Drawing No. W-9-55
 Date MAY 25, 1955 Scale 1" = 2000'

STATE OF WEST VIRGINIA
 DEPARTMENT OF MINES
 OIL AND GAS DIVISION
 CHARLESTON

WELL LOCATION MAP

FILE NO. JUC-15

+ Denotes location of well on United States Topographic Maps, scale 1 to 62,500, latitude and longitude lines being represented by border lines as shown.

- Denotes one inch spaces on border line of original tracing.

bleary 1-0-0 *Deep*



STATE OF WEST VIRGINIA
DEPARTMENT OF MINES
OIL AND GAS DIVISION 9

Quadrangle Parsons 2 WS

Permit No. TUC-15

WELL RECORD

Oil or Gas Well dry hole
(KIND)

Company Columbian Carbon Company
Address Box 873, Charleston 23, W. Va.
Farm United States of America Acres 346.48
Location (waters) Horseshoe Run
Well No. D-1, GW-1219 Elev. 2072.99'
District St. George County Tucker
The surface of tract is owned in fee by Director, Bureau of Land Management
Address Washington, D. C.

Casing and Tubing	Used in Drilling	Left in Well	Packers
Size			Kind of Packer
16			<u>Mid. btm. hole</u>
13 3/8" 48#	28'	28'	Size of <u>8-5/8"</u>
10 3/4" 40#	494'	494'	Depth set <u>1017'DLM</u>
8 1/4" 24#	1025'4"	1025'4"	
8 1/4" 24#	4282'8"	4282'8"	
5 3/16"			
3"			Perf. top
2"			Perf. bottom
Liners Used			Perf. top
			Perf. bottom

Mineral rights are owned by same
Address _____
Drilling commenced 9-14-55
Drilling completed 12-10-55
Date Shot not shot From _____ To _____
With _____
Open Flow /10ths Water in _____ Inch
/10ths Merc. in _____ Inch
Volume _____ Cu. Ft.
Rock Pressure _____ lbs. _____ hrs.
Oil _____ bbls., 1st 24 hrs.
WELL ACIDIZED not acidized
WELL FRACTURED see reverse side

CASING CEMENTED _____ SIZE _____ No. Ft. _____ Date _____
see reverse side
COAL WAS ENCOUNTERED AT none FEET _____ INCHES
_____ FEET _____ INCHES FEET _____ INCHES
_____ FEET _____ INCHES FEET _____ INCHES

RESULT AFTER TREATMENT dry hole

ROCK PRESSURE AFTER TREATMENT _____

Fresh Water 20' Feet _____ Salt Water _____ Feet _____

Formation	Color	Hard or Soft	Top	Bottom	Oil, Gas or Water	Depth	Remarks
Cellar			0	8			
Siltstone			8	22	F. water	20'	hole full
Slate and Shells			22	2510			
Dark Shale			2510	2543			
Slate and Shells			2543	3165			
Brown Shale			3165	3682	Gas pocket	3414'	
Black Shale			3682	4171			
Brown break			4171	4173			
Lime - <i>Onondaga</i>			4173	4224			
Chert - <i>HRV</i>			4224	4319			
Lime - <i>Needmore</i>			4319	4343			
Shale - <i>Needmore</i>			4343	4374			
Oriskany			4374	4441			
Lime - <i>?</i>			4441	4481			
Sand - <i>?</i>			4481	4486			
Lime - <i>?</i>			4486	4509			
TOTAL DEPTH-----				4509'			

APR 1958
RECEIVED
WEST VIRGINIA
DEPT. OF MINES
5879542

Formation	Color	Hard or Soft	Top	Bottom	Oil, Gas or Water	Depth Found	Remarks
10-3/4" casing							ran with midget bottom hole packer at 487' DLM.
8-5/8" casing							ran with midget bottom hole packer at 1017' DLM - 12 sacks Aquagel.
7" casing							ran with shoe at 4243' DLM - Circulated Aquagel and cemented with 50 sacks. Pumped plug to 25' of bottom.
<p>Fractured 12-12-55. Ran 2" tubing and set packer at 4233'. Dumped in 40 bbls. Diesel fuel to break down formation. Pumping pressure with 2 trucks 2300#. Pumped in 1600 gallons kerosene with 3000# sand. Maximum pressure 2800# - flushed with 45 bbls. fuel oil - final pressure 1800#. Pulled tubing and swabbed. Salt water came in as fast as they could bail.</p>							



Date April 22, 19 58

APPROVED Columbian Carbon Company, Owner

By W. S. Moore, Sup't of Production
(Title)