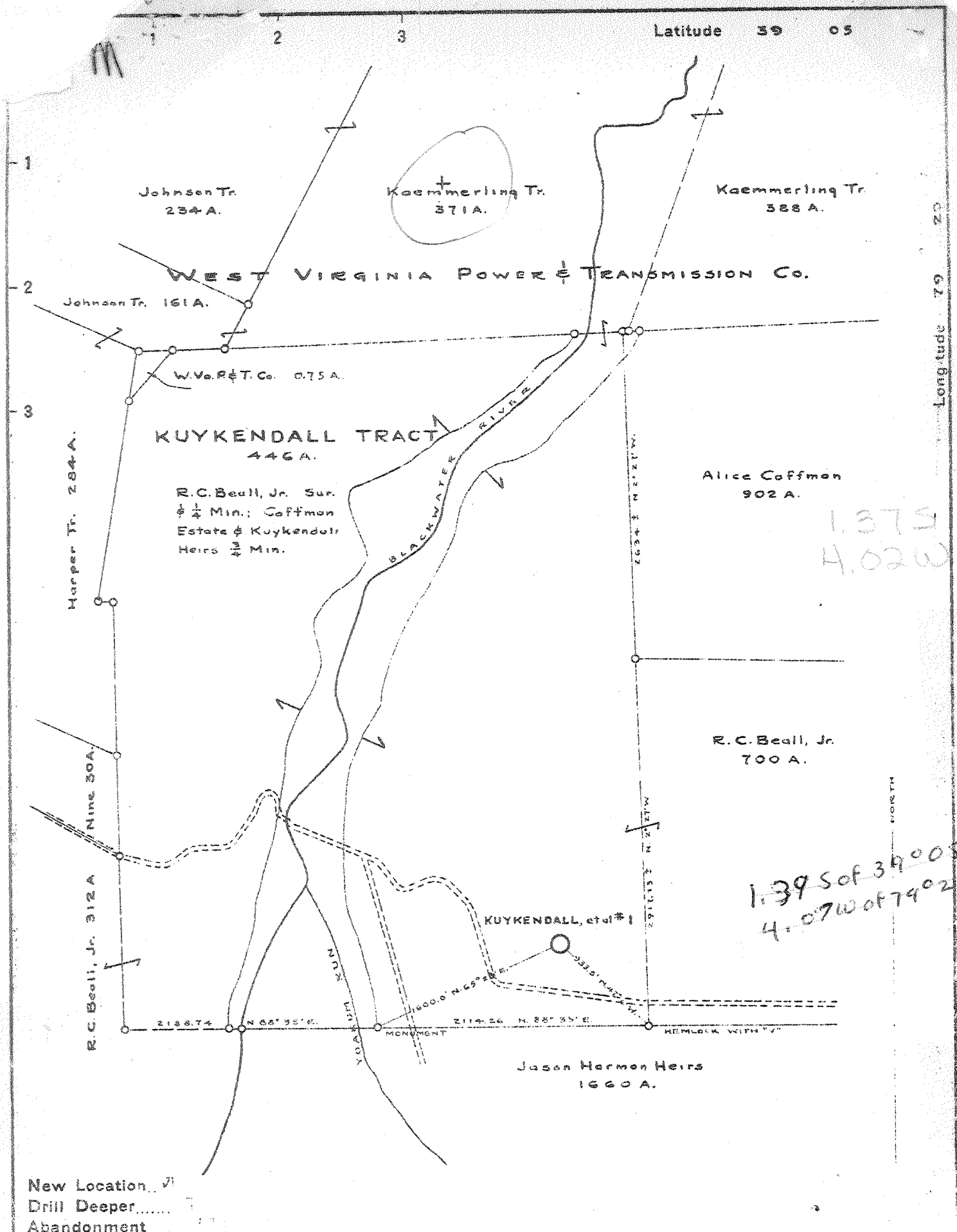


P.



New Location    
 Drill Deeper    
 Abandonment

Company	THE OHIO OIL CO.
Address	FINDLAY, OHIO
Farm	KUYKENDALL, ET AL, UNIT
Tract	Acres 640.40 Lease No. 126
Well (Farm) No.	Serial No.
Elevation (Spirit Level)	3341.7
Quadrangle	DAVIS - SC
County	TUCKER District DRY FORK
Engineer	<i>E. B. Phoebe</i>
Engineer's Registration No.	
File No.	Drawing No.
Date	JULY 7, 1944 Scale 1" = 1000'

STATE OF WEST VIRGINIA  
 DEPARTMENT OF MINES  
 OIL AND GAS DIVISION  
 CHARLESTON

**WELL LOCATION MAP**  
 FILE NO. TUC-2

+ Denotes location of well on United States Topographic Maps, scale 1 to 62,500, latitude and longitude lines being represented by border lines as shown.

- Denotes one inch spaces on border line of original tracing.

Acres of the Mile Ground

DEEP WELL 1-1 287

WEST VIRGINIA DEPARTMENT OF MINES  
OIL & GAS DIVISION  
W E L L R E C O R D

Gas Well  
CASING & TUBING

Permit No. Tuc-2			
Davis Quad.			
Company	The Ohio Oil Company		
Address	539 S. Main St., Findlay, Ohio	20"	151'
Farm	Kuykendall et al unit A-640.40	13 3/8	814'
Location	Blackwater River, Canaan Valley	7	8305'
Well No.	1	Elev. 3349	2 7/8 8407'6 8407'6
District	Dry Fork Tucker County		
Surface	Kuykendall et al, Davis, W.Va.		No Packer
Mineral	Same		
Commenced	9-19-44		Casing cemented: 20"
Completed	3-25-46		151' 10-2-44
Date shot	3-2-45	Depth 8340' to 8360'	13 3/8 814' 10-27-44
		with 230 qts. for acidizing see footnotes	7" 8305' 1-23-46
Volume	4,150,000 C.F.		
Rock Pressure	3000 lbs. 24 hrs.		No coal
No water			

Sandstone & Shale	Wh & Gr	H O	190	
Sandstone & Shale	Wh & Gr	Round		
		& hard		
stone & shaley	Sandstone		190	1119
✓ Sixth-Sand-	Gr		1119	1194
Shale	Red		1194	1464
Sandstone & Shale	Gr&Red		1464	2022
Shaley Sandstone &				2022
Shale & sandstone			2022	2715
✓ Speechley & sandstone &				2715
shaley sandstone			2715	2759
Shale & shaley sandstone		Gr	2759	3836
Shaley Sandstone			3836	3850
✓ Benson Sand. Sandstone	Gr		3850	3885
Shale & Shaley Sandstone			3885	7400
Eff. Brk., Shale	Dk. Gr to Bk		7400	7610
✓ Tully, Limestone & Shale			7610	7630
Shale Dk Gr. to Bk			7630	8107
✓ Onondaga, Shale & Shaley				8107
Limestone	Bk		8107	8154
✓ Huntersville Chert			8154	8200
Huntersville Cherty Shale			8200	8250
✓ Oriskany, Sandstone			8250	8380
✓ Helderbert Sandy Limestone,				8380
somewhat Cherty	Drk Gr		8380	8410

Grace sandstone  
Bottom red

Gr to dk. Gr.  
Gr to Dk. Gr.  
Gr & Bk.

Lt. gr and black  
Lt. gr.  
Lt. Gr. Hard, Quartz to white.  
ic, with calc. cement  
T.D.

*Cores (at the Mile ground)*

Acidized as follows:

2-14-46 8305' to 8403 with 5000 gallons by Dowell Incorporated  
2-23-46 8220-8285 with 5000 gallons by Dowell Incorporated  
3-20-46 8220 to 8410 with 8000 gallons by Dowell Incorporated

*Cores at the Mile Ground*

7990-7995'  
8036-8041'  
8043-8052'  
8100-8105'  
8147-8149' } Onondaga ls.  
8250-8289' }  
8290-8301' } Oriskany Cores  
8303-8314' }  
8318-8320' }

8107      8250  
3349      3349  
-----  
- 4758 - 4801

TUC-2

KUYKENDALL ETAL. UNIT NO. 1 WELL.

Dry Fork District, Tucker County, W. Va.

By The Ohio Oil Co., Findlay, Ohio.

Located 1.4 mi. S. of 39° 05' and 4.09 mi. W. of 79° 20' - SC - Davis  
Quadrangle.

Elevation, 3341.7' L.

Drilling commenced Sept. 19, 1944; completed March 25, 1945.

Shot March 2, 1945, at 3840 to 3860', with 230 qts.

Acidized as follows:

8305 to 8403', with 5,000 gallons by Dowell, Inc.

8220 to 8285', with 5,000 gallons by Dowell, Inc.

8220 to 8410', with 8,000 gallons by Dowell, Inc.

Volume after acidizing, 4,150,000 cu. ft. per day.

Rock pressure, 3,000 lbs. in 24 hrs.

20" casing, 151'; 13-3/8", 814'; 7", 8305'; 2-7/8" tubing, 8407' 6";  
all of casing cemented.

Section based on complete set of samples examined by J. H. C. Martens.

Record to RCT from Martens June 26, 1947.

Top. Bottom. Thickness.

POCONO FORMATION, 190+ FEET			
10 -	31	21	Sandstone, light-brown and white, coarse to very coarse
31 -	36	5	Shale, gray, with some brown stain
36 -	46	10	Shale, dark-gray
46 -	60	14	Sandstone, light-gray, medium- to coarse-grained
60 -	90	30	Siltstone, gray
90 -	96	6	Shale, bright-green, somewhat dolomitic, not distinctly laminated, 60%; gray siltstone, 40%
96 -	101	5	Sandstone, light-gray and light-green, fine, 50%; dark-gray shale, 30%; green shale, 20%
101 -	104	3	Sandstone, light-green, fine; also some coarse sand and green shale
104 -	111	7	Sandstone, light-gray, fine, with a few coarse grains
111 -	114	3	Siltstone, gray
114 -	120	6	Sandstone, gray to light-gray, mostly fine
120 -	123	3	No sample
123 -	127	4	Shale, gray, silty
127 -	133	6	Siltstone, green, sandy, 50%; gray silty shale, 50%
133 -	146	13	Siltstone and silty shale, gray; contains many fragmentary plant fossils
146 -	149	3	Sandstone, gray, fine, with carbonized and pyritized plant fossils
149 -	151	2	Shale, gray, silty
151 -	174	23	Siltstone and silty shale, gray
174 -	177	3	Sandstone, light-gray, medium-grained
177 -	190	13	Sandstone, light-green, fine
CATSKILL FORMATION, 1832 FEET			
190 -	193	3	Siltstone, red, coarse, 50%; light-gray siltstone and very fine sandstone, 50%
193 -	196	3	Siltstone and shale, red, 60%; light-gray to light-green coarse siltstone, 40%
196 -	230	34	Shale, red, mostly silty
230 -	247	17	Siltstone and shale, red
247 -	275	28	Siltstone, red and green, micaceous; a little dolomite, 262-265'
275 -	287	12	Shale, red, silty, slightly dolomitic
287 -	304	17	Sandstone, red, with green specks, very fine

(Continued OVER, page 2)

Top.	Bottom.	Thickness.	
304	- 311	7	Dolomite, light-brown, sandy, 50%; red and green fine sandstone, 50%
311	- 325	14	Sandstone, light-green, with red specks, dolomitic, fine
325	- 332	7	Sandstone, red and green
332	- 344	12	Shale, red
344	- 353	9	Siltstone, green, sandy; also some red and green shale
353	- 400	47	Shale, red
400	- 412	12	Siltstone and shale, green
412	- 437	25	Siltstone, red and green
437	- 446	9	Siltstone, grayish-green
446	- 451	5	Sandstone, light-gray, fine
451	- 457	6	No sample
457	- 468	11	Sandstone, light-green, very fine
468	- 473	5	Siltstone, green, coarse, 70%; red silty shale, 30%
473	- 486	13	Shale, red
486	- 491	5	Siltstone, red, fine
491	- 498	7	Siltstone, green, sandy
498	- 520	22	Sandstone, light-green to nearly white, very fine
520	- 527	7	Sandstone, very light green, fine
527	- 531	4	Sandstone, red and light-green, fine
531	- 537	6	Shale, red, very silty
537	- 558	21	Sandstone, red, very fine
558	- 580	22	Sandstone, very light green to nearly white, fine
580	- 588	8	Shale, red, silty
588	- 594	6	Sandstone, light-green, very fine
594	- 623	29	Siltstone, red
623	- 630	7	Siltstone, green and red
630	- 638	8	Sandstone, light-green, very fine
638	- 648	10	Sandstone, light-green and light-red, very fine
648	- 653	5	Sandstone, very light green, fine
653	- 659	6	Sandstone, light-green, very fine
659	- 666	7	Siltstone, red and green, very sandy
666	- 685	19	Sandstone, light-green, with some red, very fine
685	- 695	10	Siltstone, gray to grayish-green, sandy
695	- 742	47	Sandstone, light-green, with some red, fine to very fine
742	- 752	10	Shale, red, silty
752	- 759	7	Siltstone, red
759	- 762	3	Sandstone, light-green, with some red, very fine
762	- 772	10	Sandstone, light-green, fine to very fine; a few pieces of coal and some pyrite
772	- 782	10	Siltstone, red
782	- 788	6	Shale, red, silty
<del>788</del>	- 793	5	Siltstone, red, with a few fragments of red dolomite
793	- 799	6	Siltstone, red, sandy
799	- 812	13	Sandstone, light-green to white, fine
812	- 826	14	Siltstone, red
826	- 839	13	Shale, red, silty
839	- 844	5	Siltstone, red
844	- 852	8	Sandstone, light-red, fine
852	- 868	16	Shale and siltstone, red
868	- 898	30	Siltstone, red, mostly sandy
898	- 913	15	Shale and siltstone, red
913	- 921	8	Siltstone, red
921	- 933	12	Sandstone, red, very fine
933	- 943	10	Sandstone, red and light-green, very fine

(Continued on page 3)

Top.	Bottom.	Thickness.	
943	- 949	6	Sandstone, light-green, very fine
949	- 958	9	Shale and siltstone, red; a few pieces of reddish dolomite
958	- 968	10	Sandstone, red, very fine; a few fragments of reddish dolomite
968	- 972	4	Siltstone, red
972	- 992	20	Shale and siltstone, red
992	- 1002	10	Sandstone, red, very fine
1002	- 1006	4	Siltstone, red
1006	- 1011	5	Sandstone, light-red, fine
1011	- 1018	7	Siltstone, red
1018	- 1030	12	Sandstone, light-red, fine- to medium-grained
1030	- 1037	7	Siltstone, red
1037	- 1044	7	Sandstone, light-red, very fine
1044	- 1050	6	Siltstone, red
1050	- 1054	4	Siltstone, red, 50%; light-red fine sandstone, 50%
1054	- 1066	12	Siltstone, red, dolomitic
1066	- 1071	5	Sandstone, light-red, very fine
1071	- 1087	16	Siltstone, red, sandy
1087	- 1098	11	Sandstone, red, very fine
1098	- 1104	6	Shale and siltstone, red
1104	- 1110	6	Siltstone, red, coarse
1110	- 1115	5	Shale, red, silty
1115	- 1118	3	Siltstone, red
1118	- 1128	10	Sandstone, light-green, very fine
1128	- 1145	17	Sandstone, light-gray, fine; appears rather loosely cemented
1145	- 1150	5	Shale and siltstone, red and green; a little reddish dolomite
1150	- 1152	2	Siltstone, red, dolomitic
1152	- 1155	3	Sandstone, light-red, fine
1155	- 1168	13	Siltstone, gray and green, sandy, somewhat dolomitic
1168	- 1186	18	Sandstone, light gray, very fine
1186	- 1196	10	Sandstone, light-gray, fine
1196	- 1208	12	Siltstone, red; a few fragments of reddish dolomite
1208	- 1216	8	Sandstone, red, very fine
1216	- 1220	4	Siltstone, red, sandy
1220	- 1228	8	Sandstone, gray, very fine
1228	- 1240	12	Shale, red and green
1240	- 1245	5	Siltstone, red
1245	- 1256	11	Siltstone, red and green, sandy
1256	- 1269	13	Siltstone, red, sandy
1269	- 1290	21	Shale, red, very silty; a few fragments of red and white dolomite
1290	- 1298	8	Siltstone, red
1298	- 1308	10	Shale and siltstone, red
1308	- 1310	2	Siltstone, light-gray, and red, sandy
1310	- 1345	35	Shale and siltstone, red
1345	- 1375	30	Siltstone, red, very sandy
1375	- 1382	7	Shale, green
1382	- 1392	10	Shale and siltstone, red
1392	- 1399	7	Siltstone, red
1399	- 1411	12	Sandstone, red, very fine
1411	- 1416	5	Shale, red
1416	- 1425	9	Shale and siltstone, red

Top.	Bottom.	Thickness.	
1425	- 1444	19	Siltstone, red
1444	- 1452	8	Sandstone, red, very fine
1452	- 1459	7	Shale, red
1459	- 1464	5	Sandstone, green and red, very fine
1464	- 1469	5	Siltstone, light-green, sandy, 70%; red shale and siltstone, 30%
1469	- 1488	19	Siltstone, grayish-green, sandy
1488	- 1493	5	Sandstone, light-green and light-red, very fine
1493	- 1500	7	Sandstone, light-green, very fine
1500	- 1506	6	Shale, gray, 80%; nearly white very fine sandstone, 20%
1506	- 1535	29	Sandstone, nearly white, very fine
1535	- 1542	7	Shale, grayish-green, 50%; light-gray very fine sandstone, 50%
1542	- 1549	7	Shale and siltstone, grayish-green
1549	- 1561	12	Sandstone, light-green, with some red, very fine
1561	- 1575	14	Siltstone, red, very fine
1575	- 1582	7	Shale and siltstone, grayish-green and red
1582	- 1603	21	Sandstone, gray to brownish, very fine, silty
1603	- 1638	35	Siltstone, gray, very sandy; not much different from the siltstone above
1638	- 1642	4	Siltstone, greenish-gray
1642	- 1661	19	Sandstone, gray, fine to very fine
1661	- 1669	8	Siltstone, gray, shaly
1669	- 1674	5	Sandstone, gray, very fine
1674	- 1682	6	Shale, gray, silty, 50%; gray siltstone and very fine sandstone, 50%
1682	- 1692	10	Sandstone, light-gray to grayish-green, very fine
1692	- 1702	10	Sandstone, very light gray, fine
1702	- 1705	3	Shale, gray, silty, 60%; lighter gray siltstone and very fine sandstone, 40%
1705	- 1710	5	Sandstone, gray, very fine, 70%; gray shale, 30%
1710	- 1713	3	Siltstone, red, coarse
1713	- 1739	26	Sandstone, grayish-red, very fine
1739	- 1763	24	Sandstone, light-green to nearly white, fine to very fine, with a few coarser grains; also some gray shale and siltstone
1763	- 1804	41	Shale, gray, silty
1804	- 1810	6	Shale, gray, 50%; gray and very dark gray siltstone, containing a few coarse sand grains, 50%
1810	- 1834	24	Shale and siltstone, gray to grayish-green; also a little rather coarse sandstone
1834	- 1841	7	Shale, dark-gray, 70%; grayish-green siltstone, 30%
1841	- 1892	51	Shale and siltstone, grayish-green
1892	- 1898	6	Siltstone, gray
1898	- 1902	4	Shale, gray, silty
1902	- 1912	10	Shale, red and gray, silty
1912	- 1918	6	Shale and siltstone, gray
1918	- 1932	14	Siltstone, gray, sandy
1932	- 1936	4	Sandstone, gray, very fine
1936	- 1942	6	Siltstone, gray
1942	- 1948	6	Shale and siltstone, gray
1948	- 1950	2	Siltstone, gray, sandy
1950	- 1952	2	Sandstone, gray, very fine
1952	- 1956	4	Shale, gray
1956	- 1968	12	Siltstone, grayish-green, sandy

(Continued on page 5)

Top.	Bottom.	Thickness.	
1968	- 1973	5	Shale and coarse siltstone, gray
1973	- 1978	5	Siltstone, gray, sandy
1978	- 1987	9	Shale, red, silty, 60%; light-green coarse siltstone, 40%
1987	- 2007	20	Shale, red, silty
2007	- 2014	7	Siltstone, red
2014	- 2022	8	Shale and siltstone, red, 70%; light-green coarse siltstone, 30%
CHEMUNG, PORTAGE, AND GENESSEE FORMATIONS, 5568 FEET			
2022	- 2044	22	Shale and siltstone, gray to grayish-green
2044	- 2074	30	Shale, gray, with a little siltstone
2074	- 2101	27	Shale and siltstone, gray
2101	- 7400	5299	Samples not examined (gas at 3848-3861')
7400	- 7510	110	Shale, very dark gray, slightly calcareous
7510	- 7590	80	Shale, black; also considerable amounts of shale of various shades of gray
TULLY LIMESTONE, 40 FEET			
7590	- 7610	20	Limestone, brownish-gray, very fine textured; the two samples on this interval are mostly shale of various shades of gray, with only a little limestone
7610	- 7630	20	Limestone, brownish-gray, very fine textured; also some gray shale
HAMILTON AND MARCELLUS SHALES, 525 FEET			
7630	- 7700	70	Shale, gray to dark-gray; also some limestone, probably from above
7700	- 7840	140	Shale, gray to dark-gray
7840	- 7850	10	Shale, black, slightly calcareous
7850	- 7900	50	Shale, gray to dark-gray, slightly calcareous
7900	- 8120	120	Shale, black, partly calcareous
8120	- 8155	35	Shale, black, calcareous, with a little gray to dark-gray limestone
HUNTERSVILLE CHERT, 95 FEET			
8155	- 8195	40	Chert, light-gray and dark-gray
8195	- 8235	40	Shale, dark-gray to black, and dark-gray chert
8235	- 8250	15	Chert, gray, silty and calcareous (samples are mostly shale)
ORISKANY SANDSTONE, 135 FEET			
8250	- 8270	20	Sandstone, light-gray, fine- to medium-grained (very little sandstone in samples)
8270	- 8324	54	Sandstone, gray to dark-gray, fine- to medium-grained, mostly calcareous
8324	- 8354	30	Sandstone, white to light-gray, fine- to medium-grained, less calcareous than interval above
8354	- 8379	25	Sandstone, light-gray, fine, mostly highly calcareous (all of the samples from the Huntersville Chert and those from the Oriskany down to this depth are so much contaminated with shale that no detailed description is possible)
8379	- 8385	6	Sandstone, gray, very fine, highly calcareous
HEILDERBERG LIMESTONE, 18+ FEET			
8385	- 8399	14	Limestone, gray, very sandy and slightly cherty
8399	- 8403	4	Limestone, dark-gray, very silty; last sample, labelled 8401-8403', contains several fragments of gray to white, fine sandstone which is not present in the last few samples above this
8403			Total depth, corrected to 8410'

# DRILLER'S RECORD

Previously Requested, but NOT  
AVAILABLE

DATE: 4/10/91

<u>093</u> COUNTY	<u>2 - D, W</u> PERMIT
----------------------	---------------------------



PROD for COUNTY = 093  
PERMIT = 2

CMPL DATE: 03/25/1946  
FARM NAME: Kuykendall et al Unit 1  
COMPANY NUM:

REC NUM	YEAR	OPERATOR	STATUS	GAS-ANNUAL-OIL		DAYS ON LINE
1	1989	Columb Gas Trns	W	21588	0	?
2	1990	Columb Gas Trns	W	57336	0	?
3	1991	Columb Gas Trns	W	57336	0	?
4	1992	Columbia Nat Rs	W	43570	0	?
5	1993	Columbia Nat Rs	W	50956	0	?
6	1994	Columbia Nat Rs	W	50726	0	?
7	1995	Columbia Nat Rs	W	27830	0	?
8	1996	Columbia Nat Rs	W	26500	0	?
9	1997	Columbia Nat Rs	W	23844	0	?

Enter choice \_

D - delete record                    M - modify record                    S - store new record  
C - change to brief screen        B - back to OGPROD menu

*Steve - remember, these figures are  
for the entire year.*

*1-22-91*

*According to  
Rich Drabish  
this well was  
reworked in 86.  
It is still  
producing.*

*724  
325-2849*