

EQT PRODUCTION COMPANY WELL NO. WV 516338 - STEPHEN SANDOR, JR., ET AL LEASE

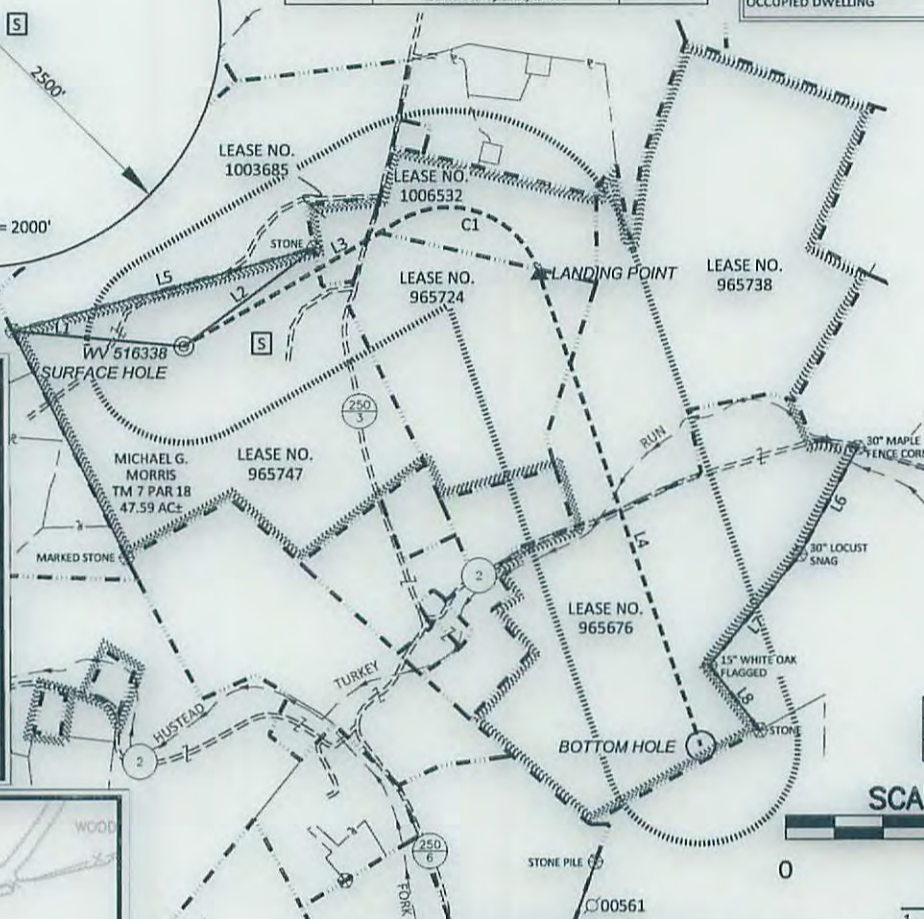
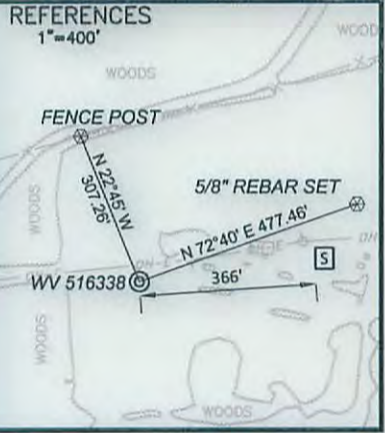
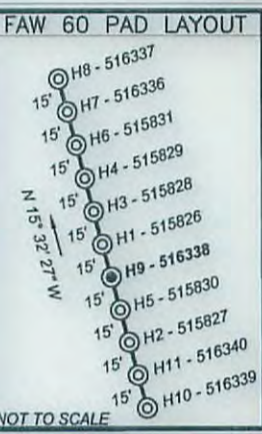
NO GAS WELLS WERE FOUND
WITHIN 2500' OF THE WV 516338
SURFACE HOLE LOCATION

WELL NO.
WV 516338

SCALE: 1" = 2000'

EQT PRODUCTION COMPANY WELL NO. WV 516338		
LEASE NO.	LESSOR	LEASE AC.
1003685	STEPHEN SANDOR JR., ET AL	2
965724	TEX RAYMOND HUGHES, ET UX	26.25
1006532	TEX RAYMOND HUGHES, ET AL	11.5
965738	MARTHA MABLE WITHERS	55.95
965676	RENEE ADAIR DEVELOPMENT COMPANY, LLC., ET AL	50.94 GROSS

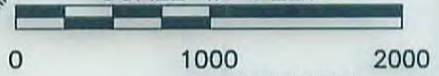
LEASING BOUNDARY	
OUTER LEASE BOUNDARY	
SURFACE BOUNDARY	
CREEK/STREAM	
ROADS	
PROPOSED LATERAL	
500' LATERAL OFFSET	
EXISTING GAS WELL (active)	
EXISTING GAS WELL (plugged)	
GAS WELL (never drilled)	
FOUND MONUMENT (as noted)	
OCCUPIED DWELLING	



ID	BEARING	DISTANCE
L1	N 84°47' W	887.23'
L2	N 52°48' E	841.45'
L3	N 59°52' E	1290.97'
L4	S 19°00' E	2575.41'
L5	N 74°36' E	1611.71'
L6	S 28°30' W	619.66'
L7	S 38°57' W	737.14'
L8	S 37°35' E	421.40'

CURVE TABLE			
TAG	RADIUS	ARC LENGTH	DELTA ANGLE
C1	500'	886.49'	101°35'02"

SCALE IN FEET



- NOTES ON SURVEY**
- NO WATER WELLS OR DEVELOPED SPRINGS USED FOR HUMAN OR DOMESTIC ANIMAL CONSUMPTION WERE FOUND WITHIN 250' OF THE WELL PAD.
 - SURFACE OWNERSHIP TAKEN FROM THE TAYLOR COUNTY TAX ASSESSOR AND COUNTY CLERK OFFICES IN OCTOBER, 2014.
 - WELL LATITUDE AND LONGITUDE FROM SURVEY GRADE OPUS SOLUTION DERIVED ON JANUARY 22, 2015.
 - TIES TO CORNERS AND REFERENCES BASED ON WV STATE PLANE COORDINATE SYSTEM, NAD '83 NORTH ZONE UNLESS OTHERWISE NOTED.
 - LEASE INFORMATION PROVIDED BY EQT PRODUCTION COMPANY.
- (+) DENOTES LOCATION OF WELL ON UNITED STATES TOPOGRAPHIC MAPS

**EQT PRODUCTION COMPANY
WELL NO. WV 516338
STEPHEN SANDOR, JR., ET AL LEASE
50.79 ACRES ±**

SURFACE HOLE
NAD '27 NORTH S.P.C.: N. 321226.56 E. 1812622.09
NAD '27 NORTH GEO. COORDINATES: LAT. 39.380059 LON. -80.162884
NAD '83 UTM 17N: N. 4359297.64 E. 572115.26

LANDING POINT
NAD '27 NORTH S.P.C.: N. 321801.54 E. 1814463.53
NAD '27 NORTH GEO. COORDINATES: LAT. 39.381126 LON. -80.156380
NAD '83 UTM 17N: N. 4359421.23 E. 572674.40

BOTTOM HOLE
NAD '27 NORTH S.P.C.: N. 319168.39 E. 1815302.03
NAD '27 NORTH GEO. COORDINATES: LAT. 39.374457 LON. -80.153351
NAD '83 UTM 17N: N. 4358683.58 E. 572942.21

600 Marketplace Suite 200, Bridgeport, WV 26330
Toll Free 855-488-9539
Fax 304-933-3327

Civil & Environmental Consultants, Inc.

DATE AUGUST 21, 2015

SCALE 1" = 1000' ACCURACY 1:200

OPERATORS
WELL No. WV 516338

47 - 091 - 01327 HGA
API No.

TYPE OF WELL:

GAS:
Production Storage *Deep *Shallow

PROPOSED WORK ON LOCATION:
Drill Drill Deeper Redrill Convert
Fracture/ Stimulate *Plug off to Formation
Perforate New Formation Plug and Abandon
Clean/ Replug Other Than Above
If "Other" Please see Details below—
DETAILS OF PROPOSED WORK _____

*TARGET FORMATION MARCELLUS

ESTIMATED DEPTH TVD: 7,184'

WELL OPERATOR EQT PRODUCTION COMPANY

ADDRESS 115 PROFESSIONAL PLACE P.O. BOX 280
BRIDGEPORT, WV 26330

I, the undersigned, hereby certify that this plot is correct to the best of my knowledge and belief and shows all the information required by law and the rules issued and prescribed by the Division of Environmental Protection.

**STATE OF WEST VIRGINIA
DIVISION OF ENVIRONMENTAL PROTECTION
OFFICE OF OIL AND GAS**

WELL AREA & LOCATION INFORMATION:

ELEVATION SOURCE DGPS (OPUS)

ELEVATION 1322.7' (GROUND), 1316.1' (PROPOSED)

WATERSHED UNNAMED TRIBUTARY OF HUSTEAD FORK DISTRICT 12/04/2015

COUNTY TAYLOR TOPO QUAD FAIRMONT WEST

SURFACE OWNER MICHAEL G. MORRIS

ACREAGE 47.59 ±

ROYALTY OWNER STEPHEN SANDOR, JR., ET AL LEASE NO. 965747

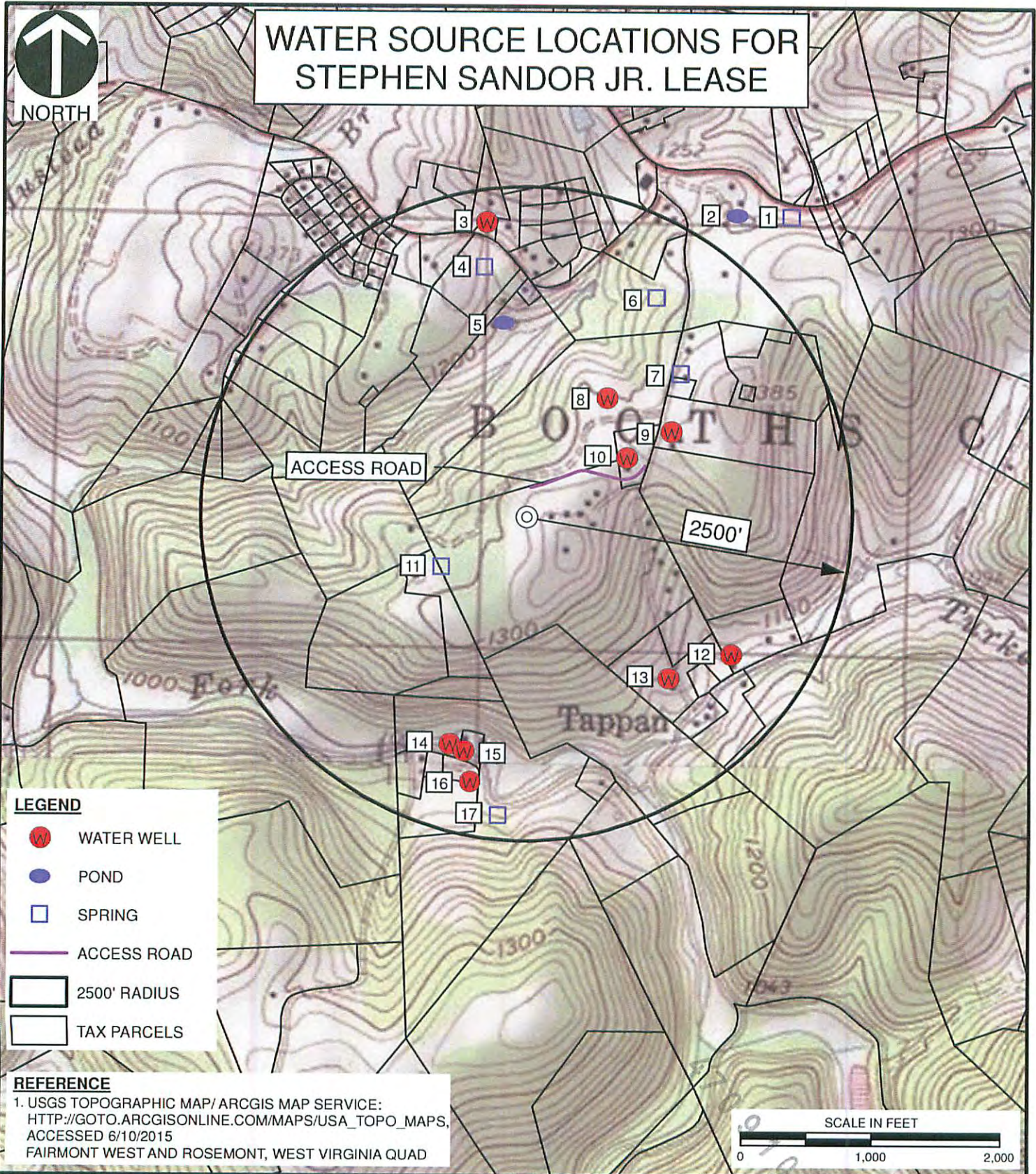
LEASE ACREAGE 50.79 ±

DESIGNATED AGENT REX C. RAY

ADDRESS 115 PROFESSIONAL PLACE P.O. BOX 280
BRIDGEPORT, WV 26330



WATER SOURCE LOCATIONS FOR STEPHEN SANDOR JR. LEASE



LEGEND

- WATER WELL
- POND
- SPRING
- ACCESS ROAD
- 2500' RADIUS
- TAX PARCELS

REFERENCE

1. USGS TOPOGRAPHIC MAP/ ARCGIS MAP SERVICE:
[HTTP://GOTO.ARCGISONLINE.COM/MAPS/USA_TOPO_MAPS](http://gto.arcgis.com/maps/usa_topo_maps),
 ACCESSED 6/10/2015
 FAIRMONT WEST AND ROSEMONT, WEST VIRGINIA QUAD



Civil & Environmental Consultants, Inc.

99 Cambridge Place - Bridgeport, WV 26330-2820
 Ph: 304-933-3119 • Toll: 855-488-9539 • Fax: 304-933-3327
www.cecinc.com

EQT PRODUCTION COMPANY
 FAW 60 WELL PAD
 TAYLOR COUNTY, WEST VIRGINIA

WATER SOURCES FOR FAW 60

DRAWN BY: ECA	CHECKED BY: JDR	APPROVED BY: DEM	FIGURE NO: WT
DATE: 06/10/2015	SCALE: 1" = 1,000'	PROJECT NO: 143-524.0021	12/04/2015

I:\svr-bridgeport\p\2011\43-524-GIS\Maps\Task_0021\WATER_SOURCES_TOPO.mxd 6/10/2015 7:45 AM (easpril)