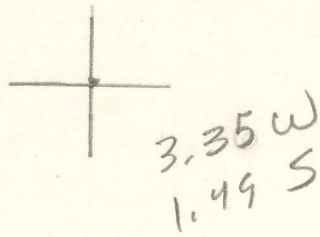


LATITUDE 38° 50'



102° 18' LONGITUDE

7'5 OGIS topo location

7.5' loc _____ 15' loc _____
 _____ (calc.) _____

Company _____

Farm D O Boggs Co

Quad Spencer (3c)

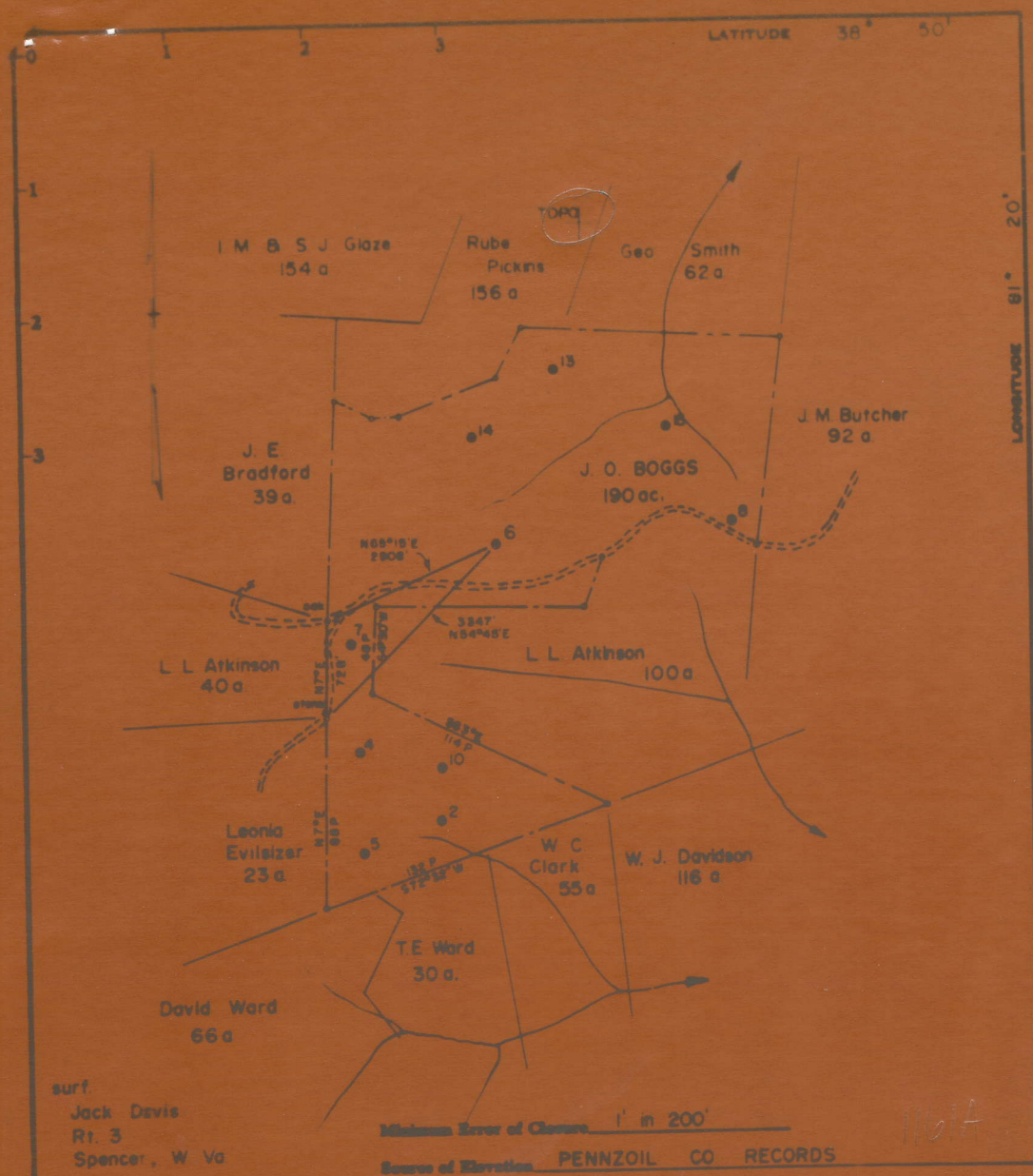
County Noane

District Spencer

WELL LOCATION MAP

File No. 87-1161A

See microfilm for
well record & plat



surf.
 Jack Davis
 Rt. 3
 Spencer, W Va

Minimum Error of Closure 1' in 200'
 Source of Elevation PENNZOIL CO RECORDS

I, the undersigned, hereby certify that this map is correct to the best of my knowledge and belief and shows all the information required by paragraph 6 of the rules and regulations of the oil and gas section of the mining laws of West Virginia.

Fracture
 New Location
 Drill Densur
 Abandonment *island*

Robert A. ...
 Signature: N 843 E W44

Map No. 41

Company PENNZOIL COMPANY
 Address P. O. Box 1588, Parkersburg, W. Va. 26101
 Farm O BOGGS

STATE OF WEST VIRGINIA
 DEPARTMENT OF MINES
 OIL AND GAS DIVISION
 CHARLESTON

Spencer District, Roane County, W. Va.

By Carter Oil Co.

On 160+ acres.

Keller Map H-23.

Elevation.....

Completed Jan. 10, 1913.

Oil well. Est. 300 bbls.; Act., 200 bbls.

From Heck's notes.

Bear Run

	Top.	Bottom.
Salt Sand (salt water, 1920 and 2000')	1870 -	2210
Big Lime	2210 -	2290
Big Injun Sand	2290 -	2295
Berea Sand (oil, 2715')	2709 -	2729
Total depth		2730 (2729?)(S.P.)