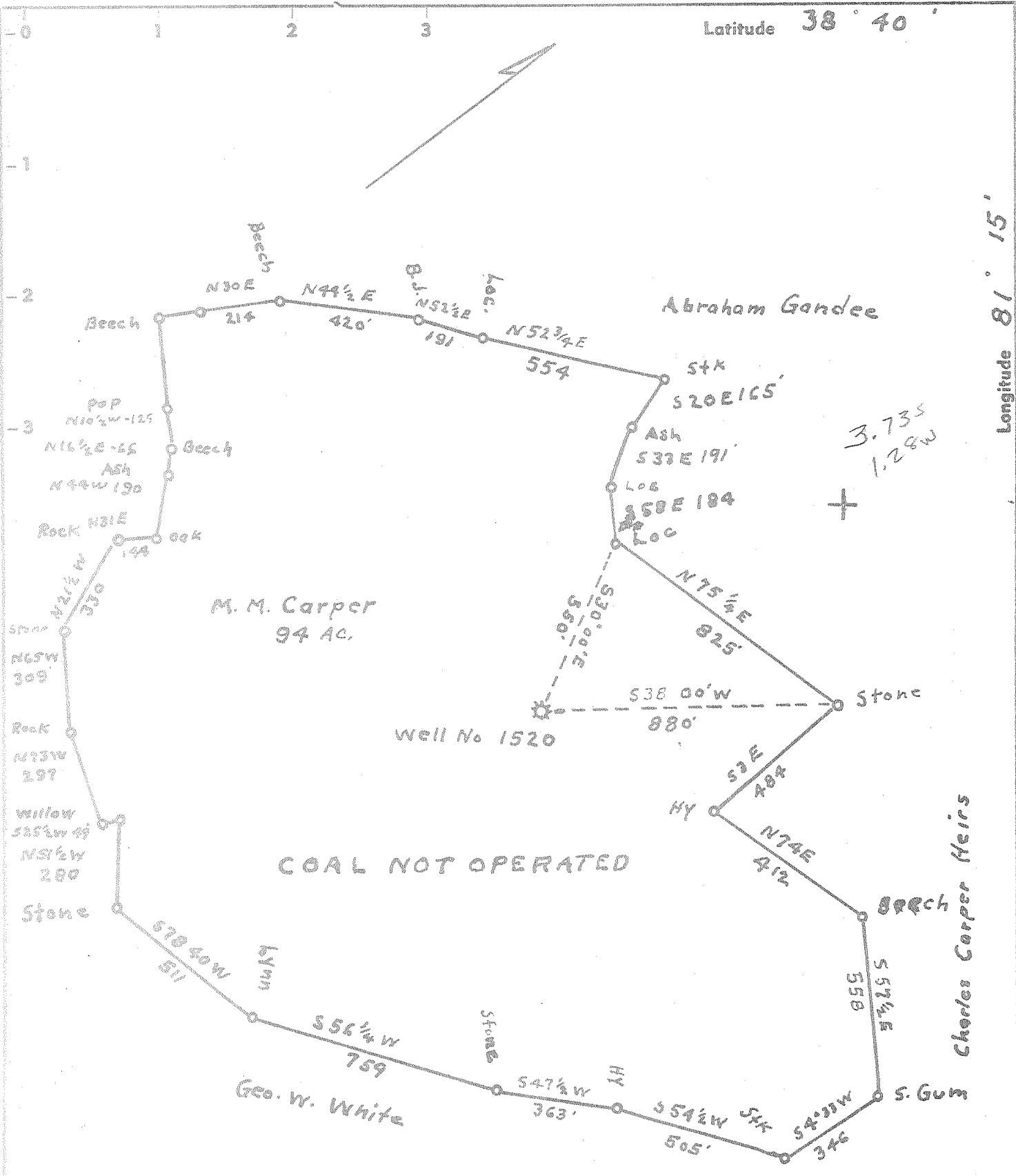


Latitude 38° 40'

Longitude 81° 15'



U.S.G.S. - B.M. El. 702 - Left Hand Run

- New Location
- Drill Deeper
- Redrill
- Abandonment 3-24-70

"I, the undersigned, hereby certify that this map is correct to the best of my knowledge and belief and shows all the information required by paragraph 6 of the rules and regulations of the oil and gas section of the mining laws of West Virginia."

Company Larry G. Parker
 Address 419 S. Lewis St. Glenville W.Va.
 Farm M. M. Carper
 Tract _____ Acres 94 Lease No. _____
 Well (Farm) No. ONE Serial No. 1520
 Elevation (Spirit Level) 1128.3
 Quadrangle Walton EC
 County Roane District Geary
 Engineer Charles O. Herwig
 Engineer's Registration No. 811
 File No. _____ Drawing No. _____
 Date March 20, 1970 Scale 1" = 400'

STATE OF WEST VIRGINIA
 DEPARTMENT OF MINES
 OIL AND GAS DIVISION
 CHARLESTON
 see microfilm for well record
WELL LOCATION MAP
 FILE NO. Ro-1146-A

+ Denotes location of well on United States Topographic Maps, scale 1 to 62,500, latitude and longitude lines being represented by border lines as shown.

— Denotes one inch spaces on border line of original tracing.