

LATITUDE

38 35

335
740



7.5' loc
via 7/31/91

81 D 730

LONGITUDE

LONGITUDE

7.5 ~~OGIS~~ topo location

7.5' loc _____

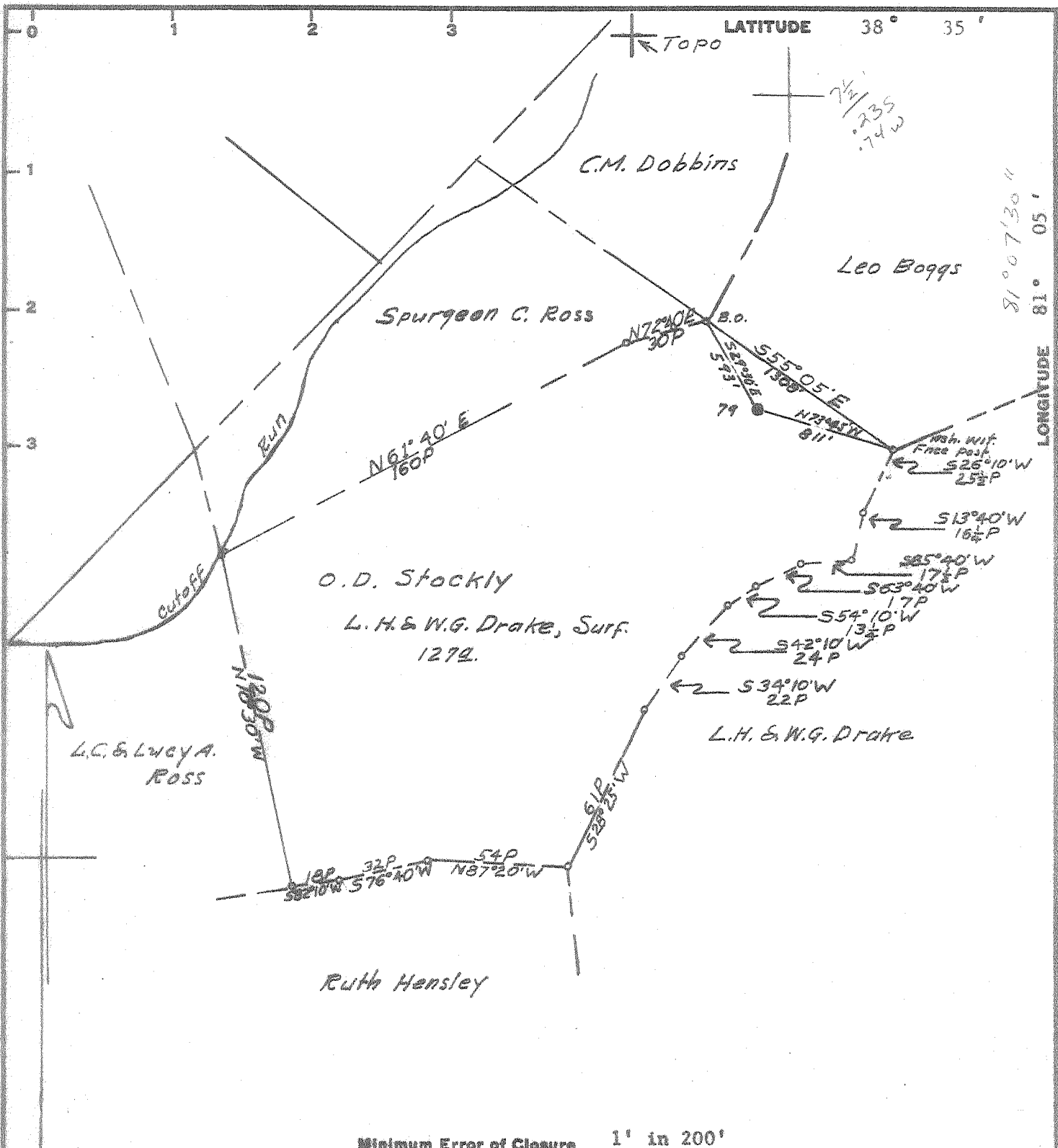
15' loc _____
(calc.) _____

Company _____	
Farm _____	
LOCATION MAP _____	
Quad <u>Newton</u>	
County _____	
District <u>Geary</u>	

WELL LOCATION MAP

File No. Roane 1136A

See Microfilm for Well Record



Minimum Error of Closure 1' in 200'

Source of Elevation Pennzoil United, Inc. Elevation Records

- Fracture
- New Location
- Drill Deeper
- Abandonment

I, the undersigned, hereby certify that this map is correct to the best of my knowledge and belief and shows all the information required by paragraph 6 of the rules and regulations of the oil and gas section of the mining laws of West Virginia.

Signed: A.C. Hilbert
 Map No. 83 Squares: N S 59 E W 31

Company	PENNZOIL UNITED, INC.		
Address	P. O. Box 1588, Parkersburg, W. Va.		
Farm	O. D. Stockly		
Tract	127A	of	4000A
Lease No.	60643		
Well (Farm) No.	79	Serial No.	
Elevation (Spirit Level)	1207.0 ground		
Quadrangle	Otter	/ Newgate S B	
County	Roane	District	Geary
Engineer	A.C. Hilbert		
Engineer's Registration No.	2534		
File No.		Drawing No.	
Date	April 18, 1968		
Scale	1" = 800'		

STATE OF WEST VIRGINIA
 DEPARTMENT OF MINES
 OIL AND GAS DIVISION
 CHARLESTON

WELL LOCATION MAP

FILE NO. ROA-1136-A

+ Denotes location of well on United States Topographic Maps, scale 1 to 62,500, latitude and longitude lines being represented by border lines as shown.

- Denotes one inch spaces on border line of original tracing.