

LATITUDE

38 35

$1\frac{1}{2}$
-16 S
-32 W

7.5' loc
Kla 7/21/91

81 0730

LONGITUDE

LONGITUDE

7.5 ~~OGIS~~ topo location

7.5' loc _____ 15' loc _____
(calc.) _____

Company _____

Farm _____

LOCATION MAP

Quad Newton

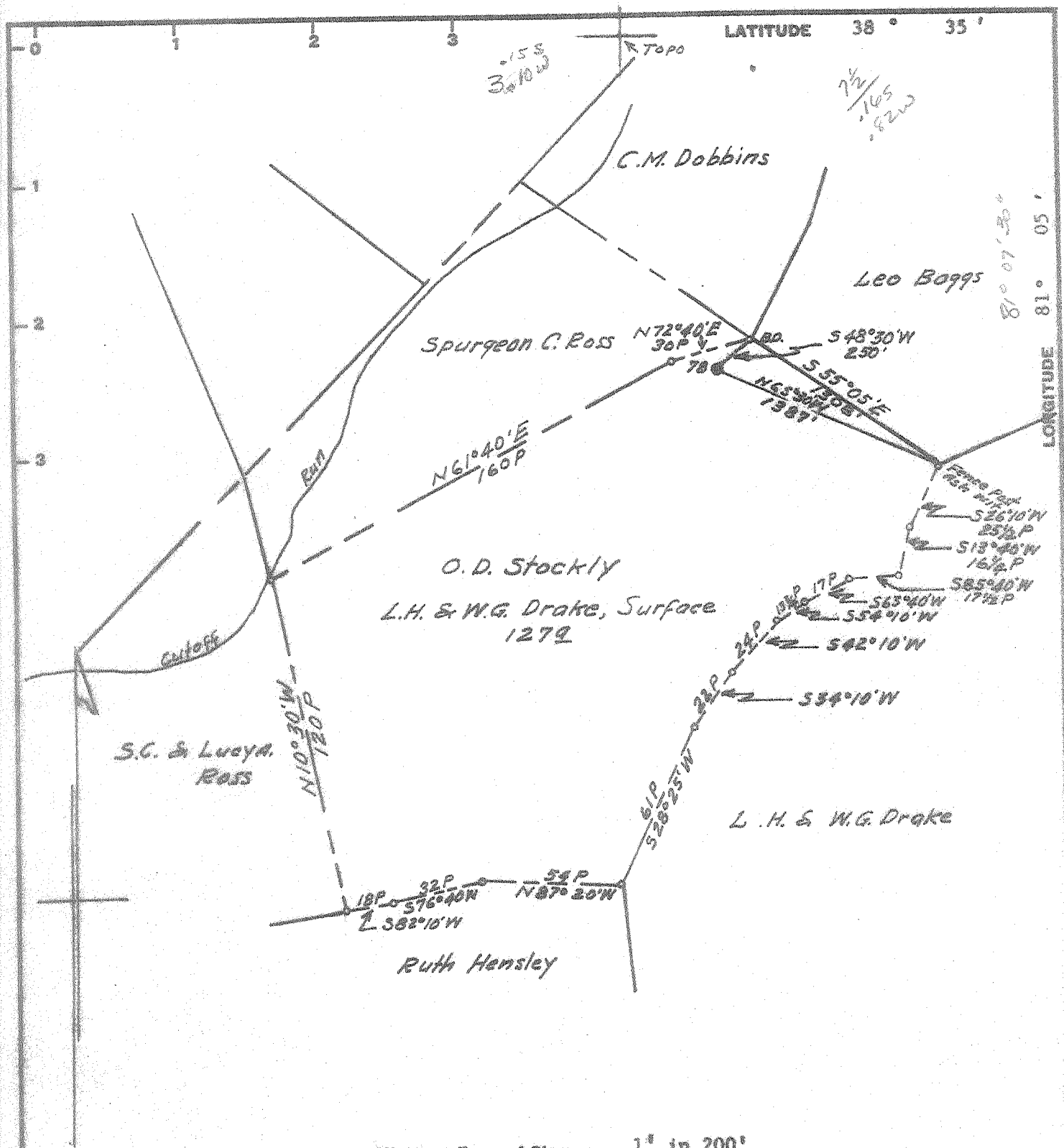
County _____

District Geary

WELL LOCATION MAP

File No. Boare 1135A

See Microfilm for
Well Record!



Minimum Error of Closure 1" in 200'

Source of Elevation Pennzoil United, Inc. Elevation Records

I, the undersigned, hereby certify that this map is correct to the best of my knowledge and belief and shows all the information required by paragraph 6 of the rules and regulations of the oil and gas section of the mining laws of West Virginia.

- Fracture
- New Location
- Drill Deeper
- Abandonment

Signed: A.C. Hilbert

Map No. 83 Squares: N S 59 E W 31

Company	PENNZOIL UNITED, INC.
Address	P. O. Box 1588, Parkersburg, W. Va.
Farm	O. D. Stockly
Tract	127 A. Acres 4000A. Lease No. 60643
Well (Farm) No.	78 Serial No.
Elevation (Spirit Level)	1318.0' ground
Quadrangle	Orter / Newton 7 1/2 SC
County	Roane District Geary
Engineer	A.C. Hilbert
Engineer's Registration No.	2534
File No.	Drawing No.
Date	April 18, 1968 Scale 1" = 800'

STATE OF WEST VIRGINIA
DEPARTMENT OF MINES
OIL AND GAS DIVISION
CHARLESTON

WELL LOCATION MAP

FILE NO. ROA-1135-A

† Denotes location of well on United States Topographic Maps, scale 1 to 62,500, latitude and longitude lines being represented by border lines as shown.

- Denotes one inch spaces on border line of original tracing.