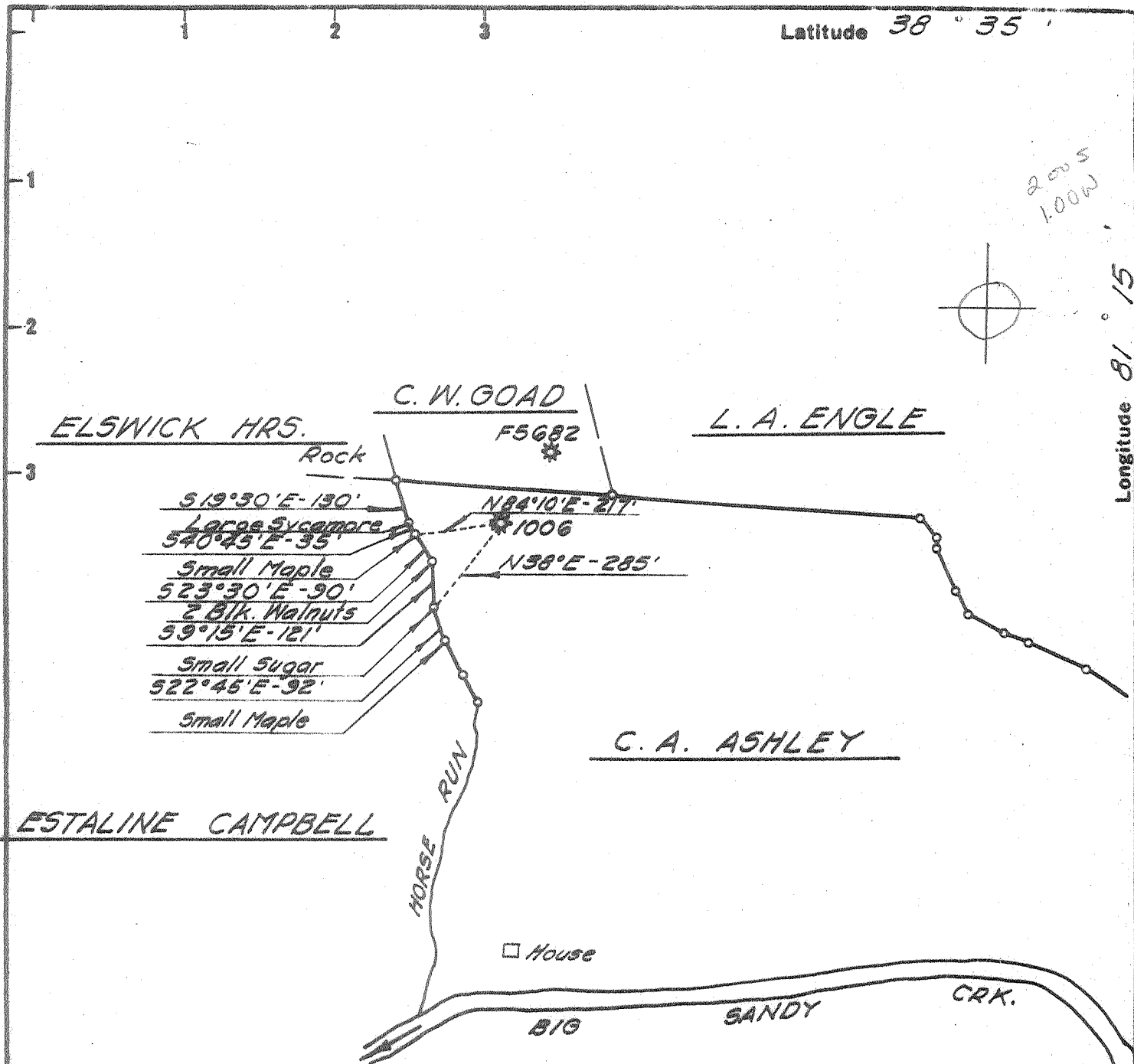


Latitude 38° 35'

2005  
100W

Longitude 81° 15'



**BENCH MARK DESCRIPTION**  
 U. S. G. S. Standard Disc. No. 229 S. K. S. Set  
 In Concrete Post, South Side Big Sandy Crk.,  
 North Side Secondary Road, 300' ± West of  
 Mouth of Horse Run. Elev. 670.00'

**DEGREE OF ACCURACY**  
 One Part in 200

- Fracture Before 6/5/27
- New Location
- Drill Deeper
- Redrill
- Abandonment

I, the undersigned, hereby certify that this map is correct to the best of my knowledge and belief and shows all the information required by Paragraph 5 of the Rules and Regulations of the Oil and Gas Section of the Mining Laws of West Virginia.  
 The accuracy of this survey is within the limits and as prescribed in paragraph 5 by the Oil and Gas Division of the Department of Mines Regulations.  
**PROVEN ELEVATION 670.00'**

Company UNITED FUEL GAS CO.  
 Address CHARLESTON, W. VA.  
 Farm C. A. ASHLEY  
 Tract \_\_\_\_\_ Acres 68 Lease No. 2235  
 Well (Farm) No. 1 Serial No. 1006  
 Elevation (Spirit Level) 779.48'  
 Quadrangle WALTON SE  
 County ROANE District GEARY  
 Engineer O. J. Spitzer  
 Engineer's Registration No. 2712  
 File No. 80-73 Drawing No. \_\_\_\_\_  
 Date AUG. 21, '67 Scale 1" = 400'

STATE OF WEST VIRGINIA  
 DEPARTMENT OF MINES  
 OIL AND GAS DIVISION  
 CHARLESTON  
*see Microfilm for well record*  
**WELL LOCATION MAP**  
 FILE NO. ROA-1131-A

+ Denotes location of well on United States Topographic Maps, scale 1 to 62,500 latitude and longitude lines being represented by border lines as shown.  
 - Denotes one inch spaces on border line of original tracing.