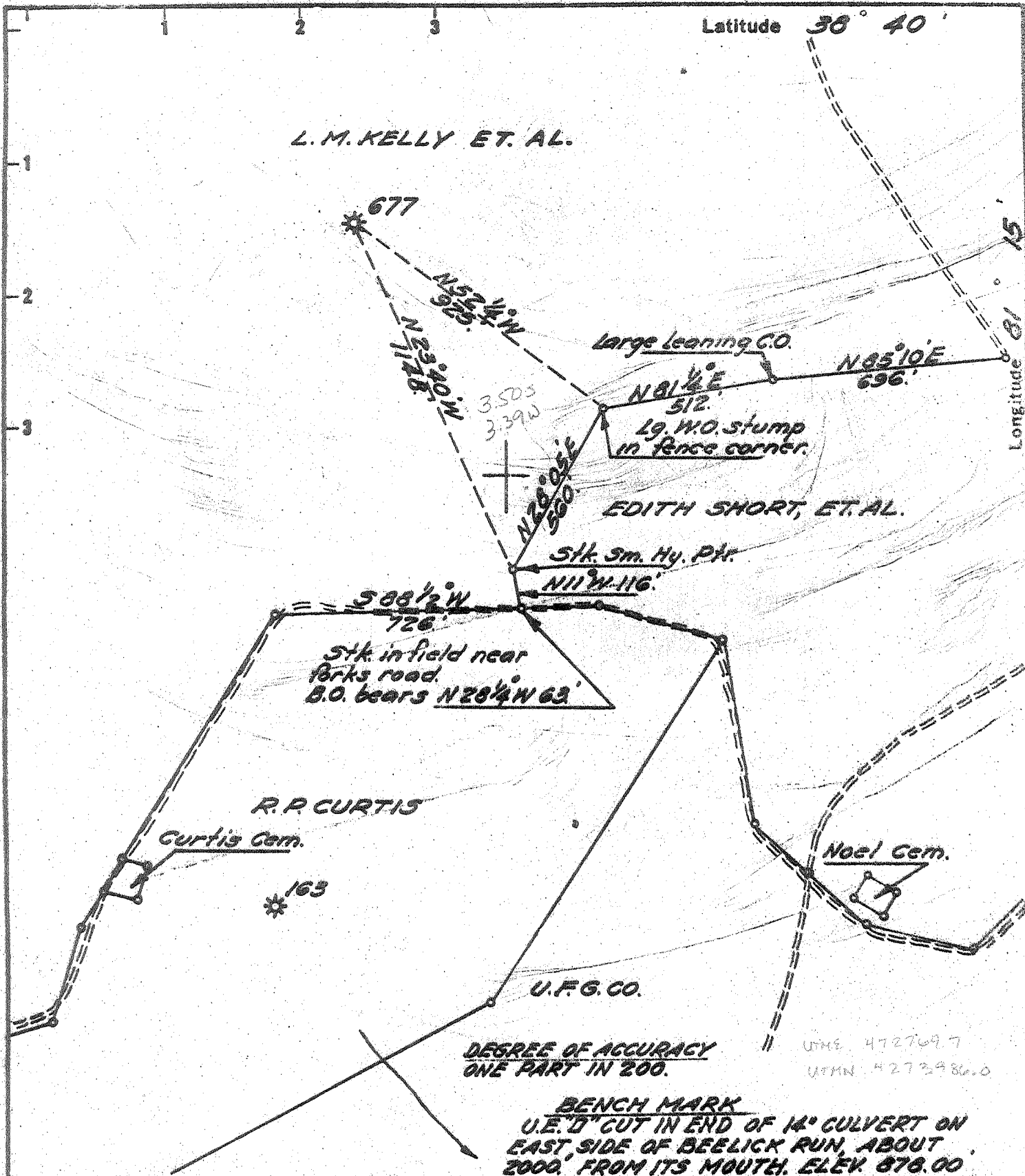


Latitude 38° 40'

Longitude 81° 15'

L. M. KELLY ET. AL.



DEGREE OF ACCURACY ONE PART IN 200.

USME 472709.7
UTMN 4273986.0

BENCH MARK
U.E. D CUT IN END OF 14" CULVERT ON EAST SIDE OF BEELICK RUN, ABOUT 2000' FROM ITS MOUTH. ELEV 878.00

- Fracture
- Before 6/5/27
- New Location
- Drill Deeper
- Redrill
- Abandonment

I, the undersigned, hereby certify that this map is correct to the best of my knowledge and belief and shows all the information required by Paragraph 5 of the Rules and Regulations of the Oil and Gas Section of the Mining Laws of West Virginia.

The accuracy of this survey is within the limits and as prescribed in paragraph 5 by the Oil and Gas Division of the Department of Mines Regulations.

PROVEN ELEVATION 878.00'

Company UNITED FUEL GAS CO.
 Address CHARLESTON W.VA.
 Farm L. M. KELLY ET. AL.
 Tract _____ Acres 152 Lease No. 1974
 Well (Farm) No. 1 Serial No. 677
 Elevation (Spirit Level) 885.02'
 Quadrangle WALTON ll
 County ROANE District WALTON
 Engineer O. L. Jones
 Engineer's Registration No. _____
 File No. 78-77 Drawing No. _____
 Date OCT. 17, 1966 Scale 1" = 400'

STATE OF WEST VIRGINIA
 DEPARTMENT OF MINES
 OIL AND GAS DIVISION
 CHARLESTON
 see microfilm for well record
WELL LOCATION MAP
 FILE NO. ROA-1127-A
Cancelled 7-20-61

+ Denotes location of well on United States Topographic Maps, scale 1 to 62,500 latitude and longitude lines being represented by border lines as shown.

- Denotes one inch spaces on border line of original tracing.

ERL