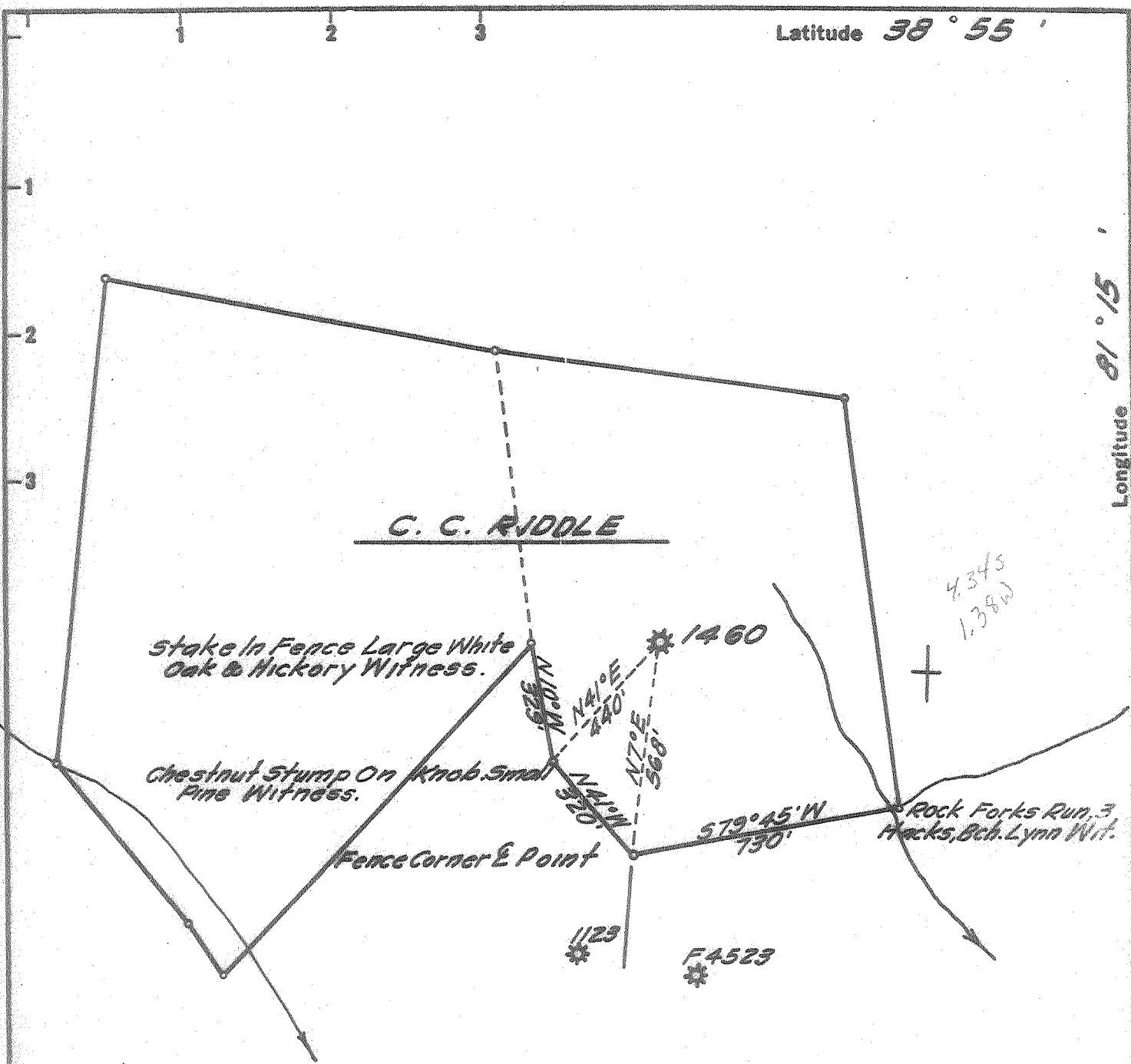


Latitude 38° 55'

Longitude 81° 15'



BENCH MARK DESCRIPTION

U.S. G.S. U.E. Square Painted on North End of 24" Drain Pipe 1800' N.E. of Low Gap Between Right Fork of Triplett Run & Spruce Run. Elev. 803.00'

DEGREE OF ACCURACY

One Part in 200

- Fracture Before 6/5/27
- New Location
- Drill Deeper
- Redrill
- Abandonment

I, the undersigned, hereby certify that this map is correct to the best of my knowledge and belief and shows all the information required by Paragraph 5 of the Rules and Regulations of the Oil and Gas Section of the Mining Laws of West Virginia.

The accuracy of this survey is within the limits and as prescribed in paragraph 5 by the Oil and Gas Division of the Department of Mines Regulations. **PROVEN ELEVATION 803.0'**

Company UNITED FUEL GAS CO.
 Address CHARLESTON, W. VA.
 Farm C. C. RIDDLE
 Tract _____ Acres 60 Lease No. 13066
 Well (Farm) No. 1 Serial No. 1460
 Elevation (Spirit Level) 963.82'
 Quadrangle SPENCER-EC
 County ROANE District SPENCER
 Engineer _____
 Engineer's Registration No. 2529
 File No. 80-93 Drawing No. _____
 Date JULY 15, '66 Scale 1" = 400'

STATE OF WEST VIRGINIA
 DEPARTMENT OF MINES
 OIL AND GAS DIVISION
 CHARLESTON
 see microfilm for well record
WELL LOCATION MAP
 FILE NO. ~~XXXXXXXXXX~~
ROA-1125-A

+ Denotes location of well on United States Topographic Maps, scale 1 to 62,500 latitude and longitude lines being represented by border lines as shown.
 - Denotes one inch spaces on border line of original tracing.