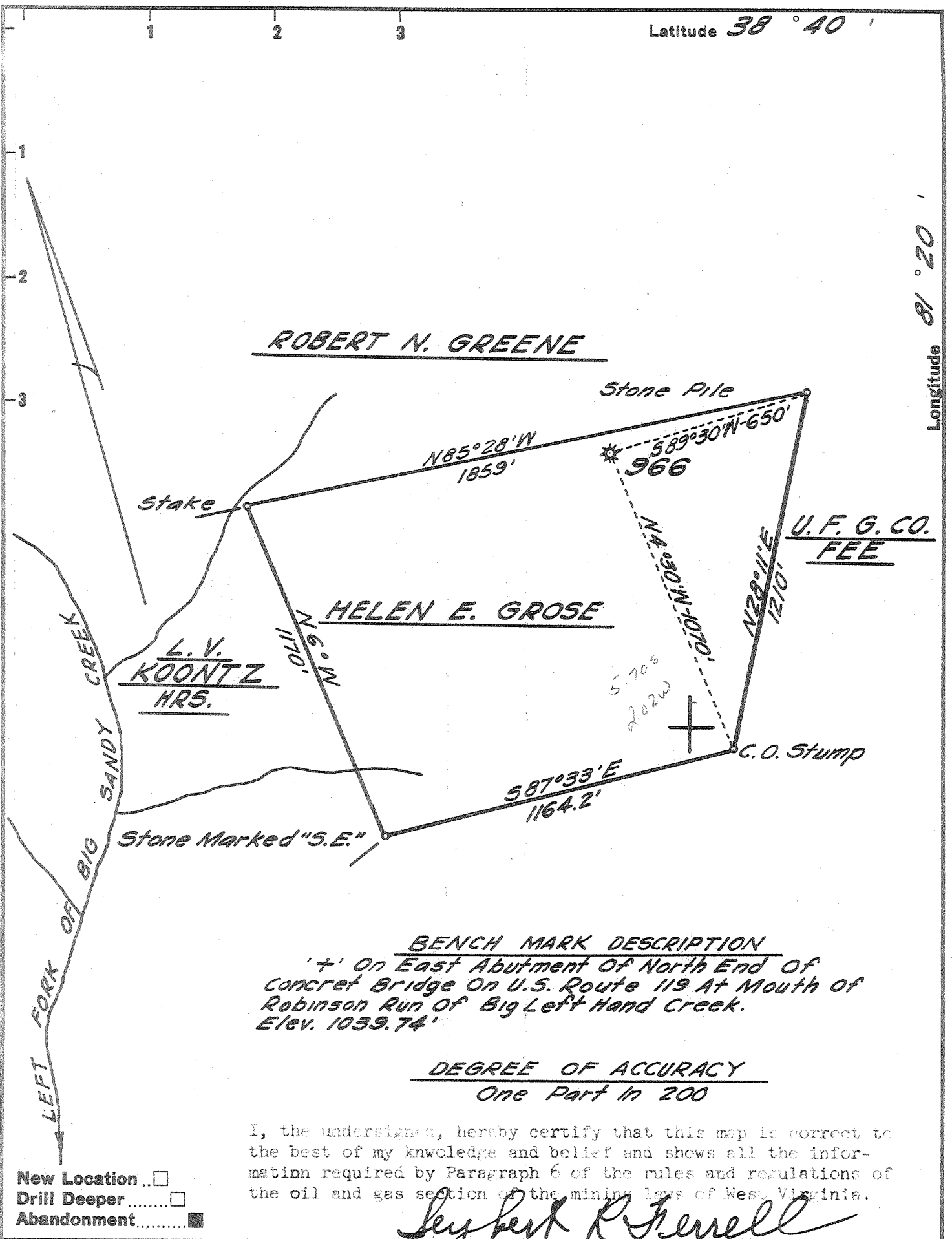


Latitude  $38^{\circ} 40'$

Longitude  $81^{\circ} 20'$



New Location...   
 Drill Deeper.....   
 Abandonment.....

Company **UNITED FUEL GAS CO.**  
 Address **CHARLESTON, W. VA.**  
 Farm **HELEN E. GROSE**  
 Tract \_\_\_\_\_ Acres **39** Lease No. **12147**  
 Well (Farm) No. **(1)** Serial No. **966**  
 Elevation (Spirit Level) **1068.17'**  
 Quadrangle **WALTON - C**  
 County **ROANE** District **WALTON**  
 Engineer *Seybert R. Jewell*  
 Engineer's Registration No. **2529**  
 File No. **74-75** Drawing No. \_\_\_\_\_  
 Date **NOV. 4, '65** Scale **1" = 400'**

STATE OF WEST VIRGINIA  
 DEPARTMENT OF MINES  
 OIL AND GAS DIVISION  
 CHARLESTON

See microfiche for Well Record

**WELL LOCATION MAP**  
 FILE NO. **ROA-1120-A**

+ Denotes location of well on United States Topographic Maps, scale 1 to 62,500, latitude and longitude lines being represented by border lines as shown.

- Denotes one inch spaces on border line of original tracing.