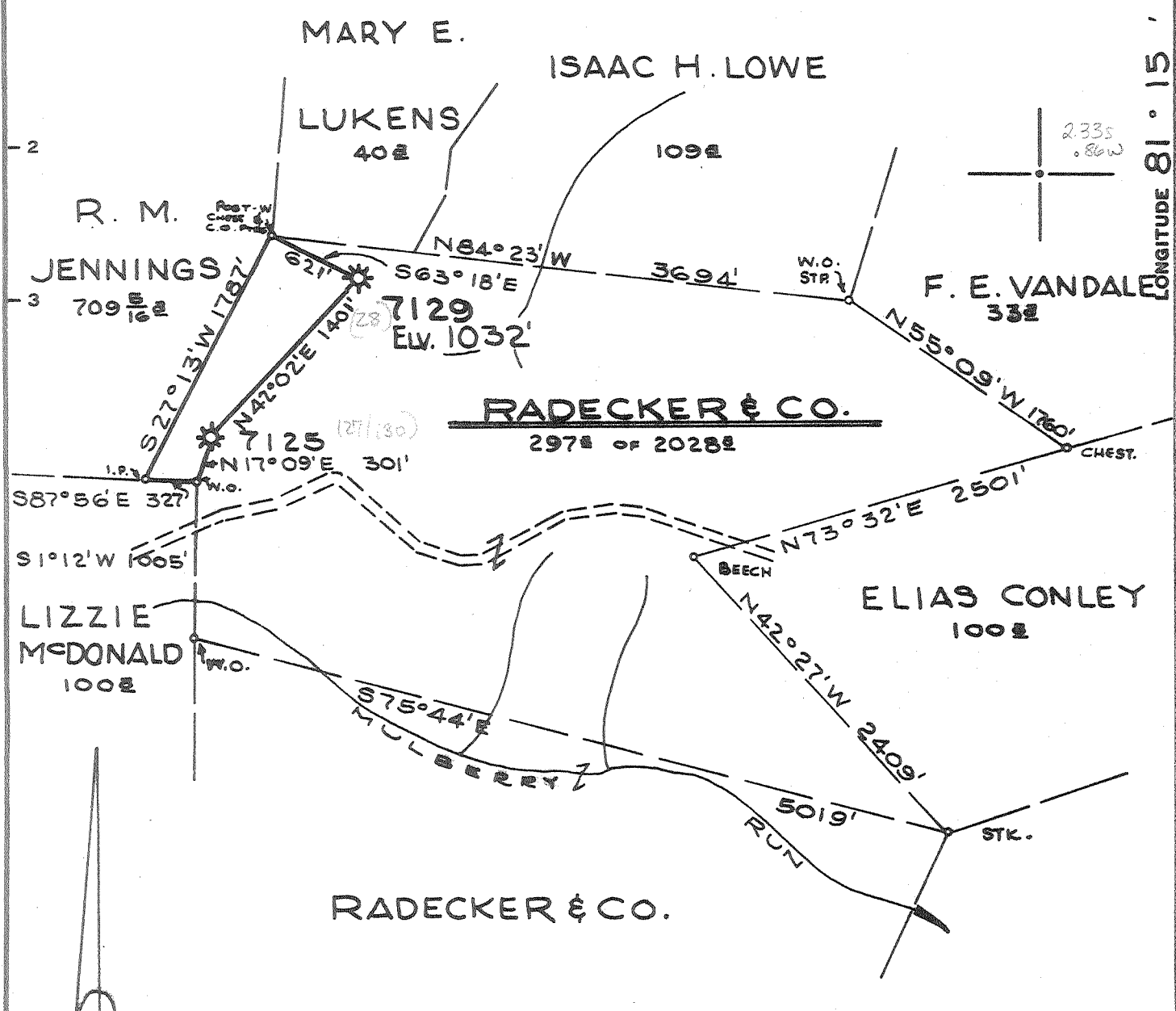


LATITUDE 38° 55'

LONGITUDE 81° 15'

12,250'



Minimum Error of Closure 1' IN 200'  
 Source of Elevation LEVELS FROM ROAD FORKS - HEAD OF LEE RUN TO CONSOLIDATED GAS SUPPLY CORP. WELL NO. 7129.  
 "I, the undersigned, hereby certify that this map is correct to the best of my knowledge and belief and shows all the information required by paragraph 6 of the rules and regulations of the oil and gas section of the mining laws of West Virginia."

New Location.....  
 Drill Deeper.....  
 Abandonment.....

MAP SHEET 32S S38-W37 F.B.1373 PG.7-9

Company CONSOLIDATED GAS SUPPLY CORP.  
 Address CLARKSBURG, W. VA.  
 Farm RADECKER & COMPANY  
 Tract \_\_\_\_\_ Acres 297± Lease No. 42779  
 Well (Farm) No. \_\_\_\_\_ Serial No. 7129  
 Elevation (Spirit Level) 1032'  
 Quadrangle SPENCER-E.C.  
 County ROANE District SPENCER  
 Engineer Jackson M. Jarvis.  
 Engineer's Registration No. 2397  
 File No. \_\_\_\_\_ Drawing No. \_\_\_\_\_  
 Date OCT. 7 1965 Scale 1" = 60 FEET

STATE OF WEST VIRGINIA  
 DEPARTMENT OF MINES  
 OIL AND GAS DIVISION  
 CHARLESTON

*See Microfilm for well records*

**WELL LOCATION MAP**  
 FILE NO. ROA-1117-A

† Denotes location of well on United States Topographic Maps, scale 1 to 62,500, latitude and longitude lines being represented by border lines as shown.  
 - Denotes one inch spaces on border line of original tracing.