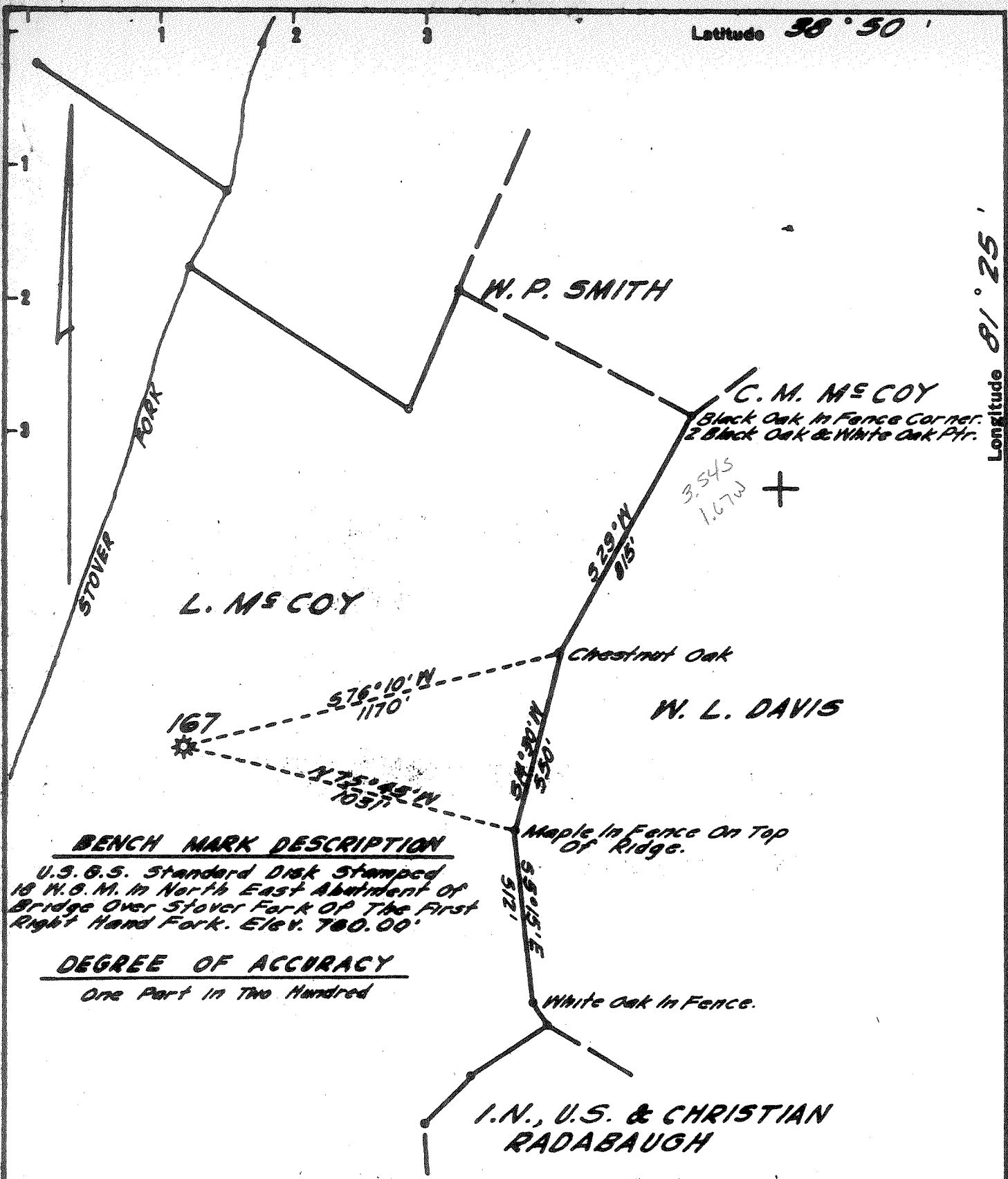


Latitude 38° 50'

Longitude 81° 25'



BENCH MARK DESCRIPTION
 U.S.G.S. Standard Disk Stamped
 18 W.G.M. in North East Abutment of
 Bridge Over Stover Fork of the First
 Right Hand Fork. Elev. 780.00'

DEGREE OF ACCURACY
 One Part in Two Hundred

I, the undersigned, hereby certify that this map is correct to the best of my knowledge and belief and shows all the information required by Paragraph 1 of the rules and regulations of the oil and gas section of the mining laws of West Virginia.

Sydney R. Russell

New Location
 Drill Deeper
 Abandonment

Company UNITED FUEL GAS CO.
 Address CHARLESTON, W. VA.
 Farm L. MCCOY
 Tract _____ Acres 250 Lease No. 5425
 Well (Farm) No. _____ Section No. 167
 Elevation (Spirit Level) 855.39'
 Quadrangle SPENCER - SW
 County ROANE District CURTIS
 Engineer Sydney R. Russell
 Engineer's Registration No. 2529
 File No. 70-89 Drawing No. _____
 Date JAN. 7, 1965 Scale 1" = 200'

STATE OF WEST VIRGINIA
 DEPARTMENT OF MINES
 OIL AND GAS DIVISION
 CHARLESTON

see Microfilm for Well Record
WELL LOCATION MAP
 FILE NO. ROZ-1116-A

+ Denotes location of well on United States Topographic Maps, scale 1 to 62,500, latitude and longitude lines being represented by border lines as shown.

- Denotes one inch spaces on border line of original tracing.