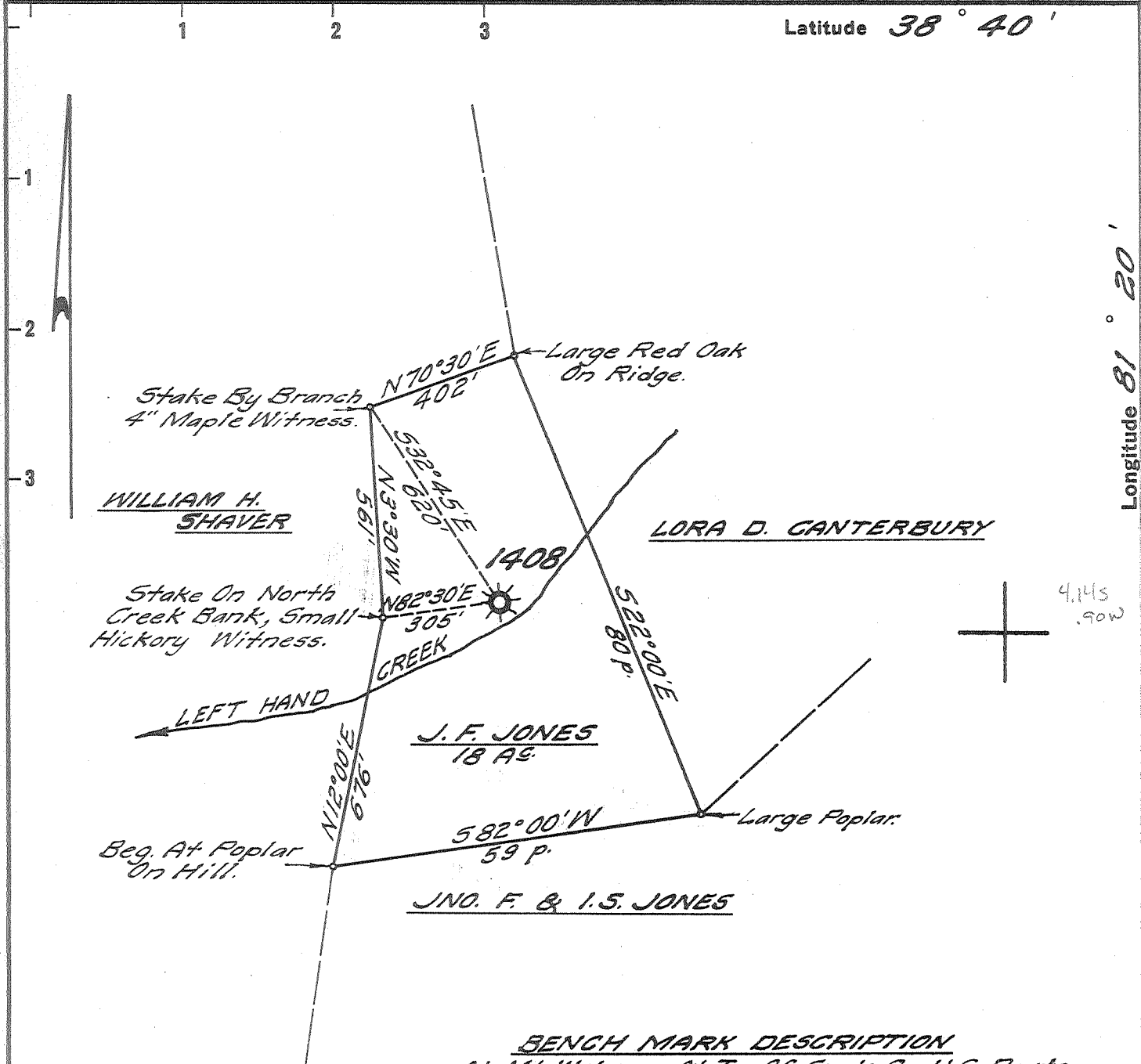


Latitude 38° 40'

Longitude 81° 20'



BENCH MARK DESCRIPTION

At Mt. Welcome At Top Of Grade On U.S. Route No. 119 At North Of Center Line Of U.S. Route No. 119, 25' South, South East Of The West Pole Of Twin Power Transmission Line Poles, 39.5' North West Of A Sign (Mt. Welcome). In Top Of A Rock Outcrop In Cut, And About 3 1/2 Feet Above Level Of Highway.
Elev. 1075.224

DEGREE OF ACCURACY

One Part In Two Hundred.

I, the undersigned, hereby certify that this map is correct to the best of my knowledge and belief and shows all the information required by paragraph 6 of the rules and regulations of the Oil and Gas Section of the Mining Law of West Virginia.

New Location
 Drill Deeper
 Abandonment

gan

Severus R. Ferrell

Company UNITED FUEL GAS CO.
 Address CHARLESTON, W. VA.
 Farm J. F. JONES
 Tract _____ Acres 58 Lease No. 7230
 Well (Farm) No. _____ Serial No. 1408
 Elevation (Spirit Level) 1052.57
 Quadrangle WALTON - B C
 County ROANE District WALTON
 Engineer S. R. Ferrell
 Engineer's Registration No. 2529
 File No. 76-77 Drawing No. _____
 Date APRIL 21, 1964 Scale 1" = 400'

STATE OF WEST VIRGINIA
 DEPARTMENT OF MINES
 OIL AND GAS DIVISION
 CHARLESTON

See Microfilm for Well Record
WELL LOCATION MAP
 FILE NO. R02-1110-A

+ Denotes location of well on United States Topographic Maps, scale 1 to 62,500, latitude and longitude lines being represented by border lines as shown.
 - Denotes one inch spaces on border line of original tracing.