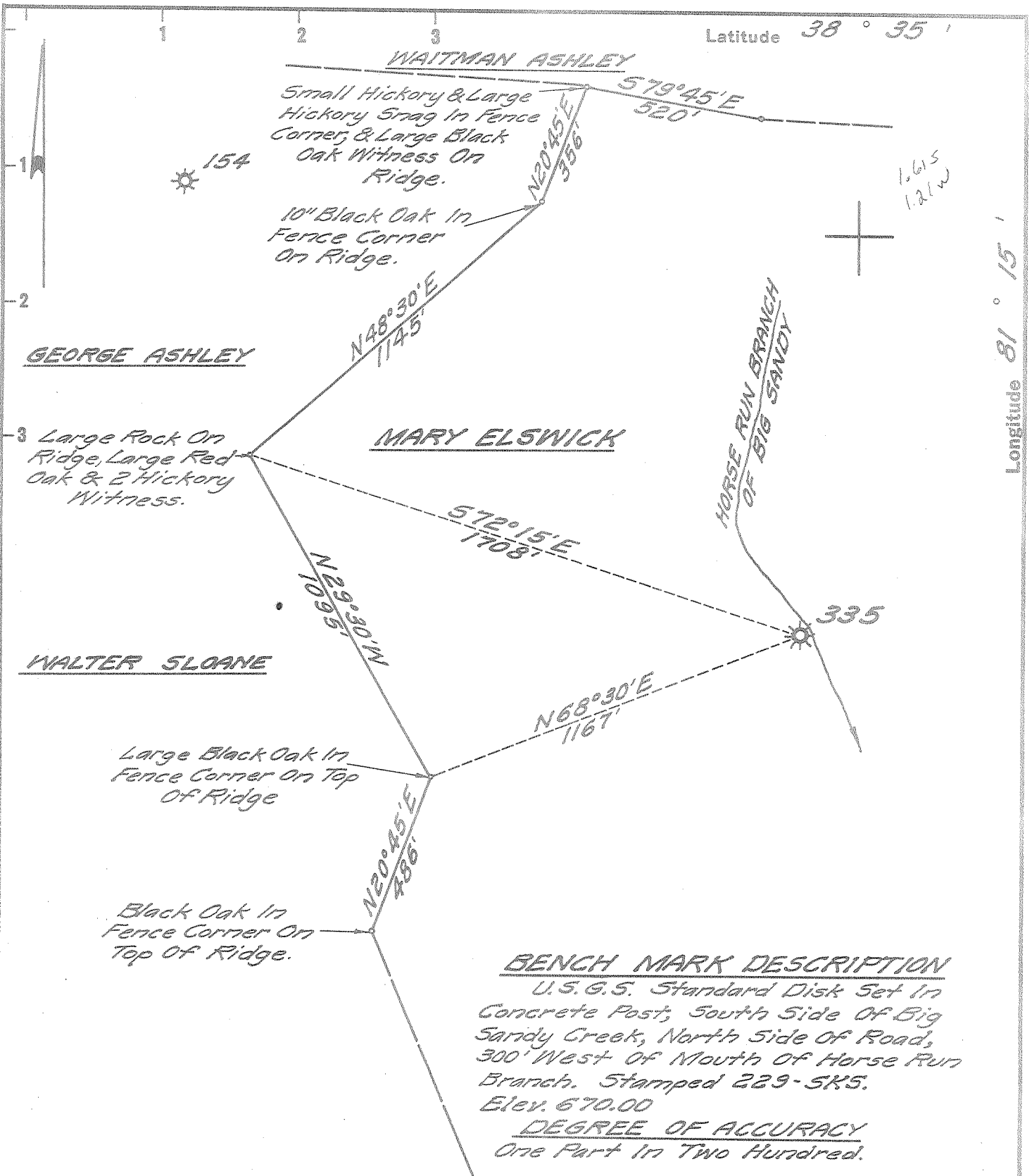


Latitude 38° 35'

Longitude 81° 15'



New Location ..
 Drill Deeper
 Abandonment

Seybert Russell

Company UNITED FUEL GAS CO
 Address CHARLESTON, W.VA.
 Farm M.J. ELSWICK
 Tract _____ Acres 177 Lease No. 2301
 Well (Farm) No. 1 Serial No. 335
 Elevation (Spirit Level) 764.37
 Quadrangle WALTON
 County ROANE District GEARY
 Engineer Seybert Russell
 Engineer's Registration No. 2529
 File No. 80-73 Drawing No. _____
 Date MAY 18, 1964 Scale 1" = 400'

STATE OF WEST VIRGINIA
 DEPARTMENT OF MINES
 OIL AND GAS DIVISION
 CHARLESTON

see microfilm for Well Record

WELL LOCATION MAP
 FILE NO. ROA-1103-A

+ Denotes location of well on United States Topographic Maps, scale 1 to 62,500, latitude and longitude lines being represented by border lines as shown.

- Denotes one inch spaces on border line of original tracing.