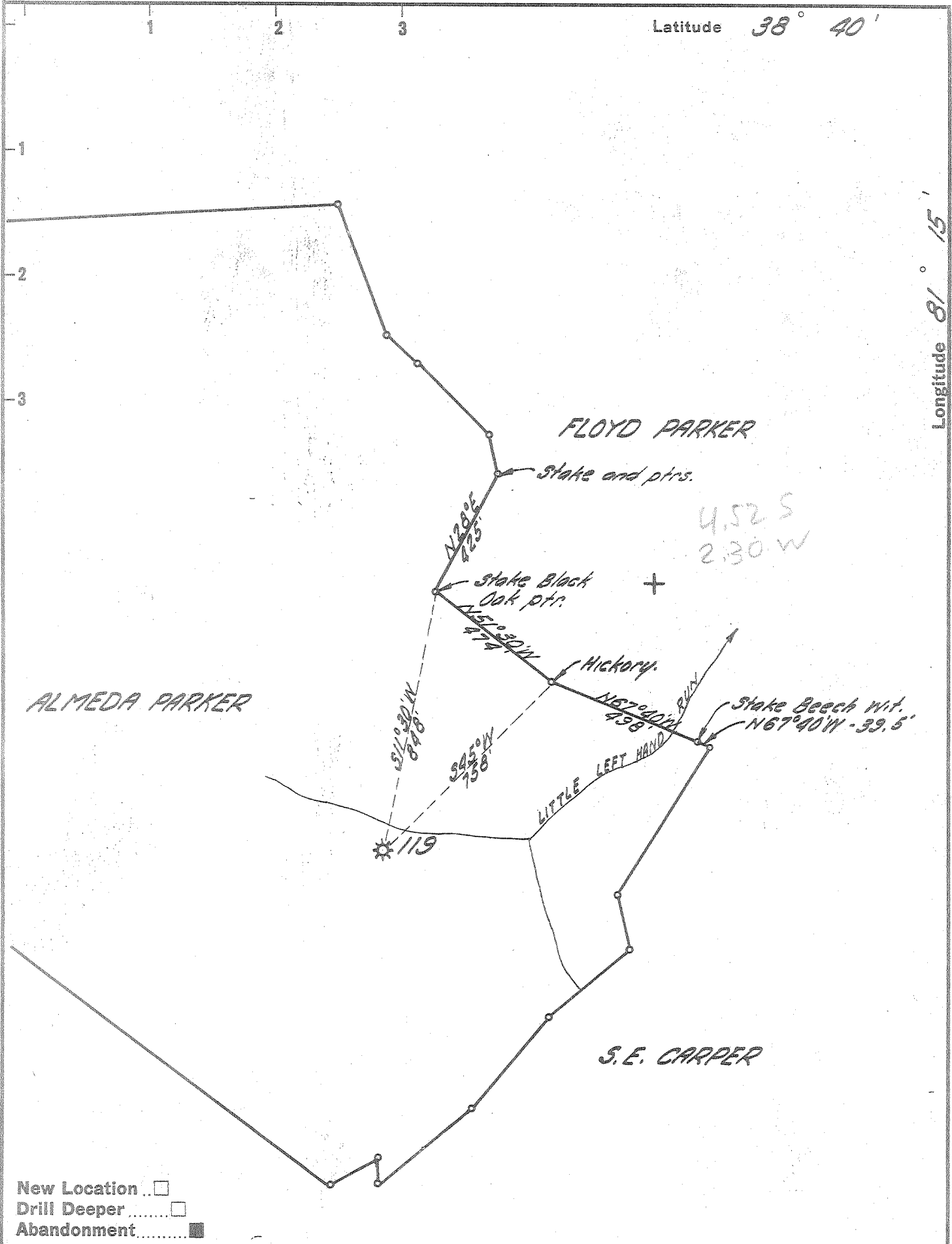


Latitude 38° 40'

Longitude 81° 15'



New Location

Drill Deeper

Abandonment

Company UNITED FUEL GAS CO.

Address CHARLESTON W.VA.

Farm ALMEDA PARKER

Tract _____ Acres 179 Lease No. 1512

Well (Farm) No. _____ Serial No. 119

Elevation (Spirit Level) 908.00'

Quadrangle WALTON

County ROANE District GEARY

Engineer Seybert R. Jewell

Engineer's Registration No. 2529

File No. 80-75 Drawing No. _____

Date 1-16-62 Scale 1" = 400'

STATE OF WEST VIRGINIA
 DEPARTMENT OF MINES
 OIL AND GAS DIVISION
 CHARLESTON

See microfilm for Well Record

WELL LOCATION MAP

FILE NO. ROA-1091-A

+ Denotes location of well on United States Topographic Maps, scale 1 to 62,500, latitude and longitude lines being represented by border lines as shown.

- Denotes one inch spaces on border line of original tracing.