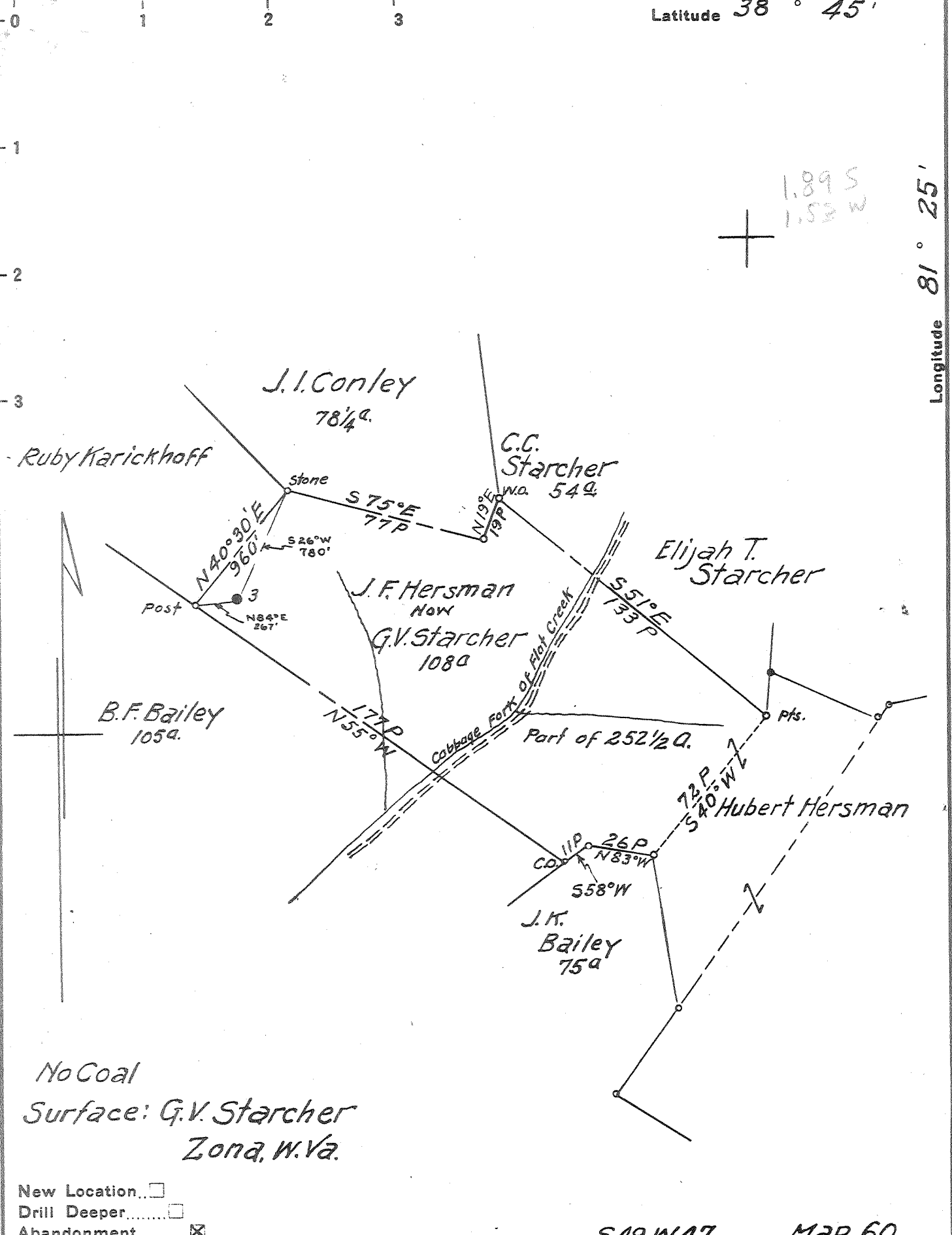


Latitude 38° 45'

Longitude 81° 25'

1.89 S  
1.53 W



No Coal  
 Surface: G.V. Starcher  
 Zona, W.Va.

- New Location...
- Drill Deeper.....
- Abandonment.....

S49W47 Map 60

Company	South Penn Natural Gas Co.
Address	Parkersburg, W.Va.
Farm	J.F. Hersman
Tract	Acres 252 1/2 Lease No. 57135
Well (Farm) No.	3 Serial No.
Elevation (Spirit Level)	1058.84 Floor
Quadrangle	Walton + 75 quad
County	Roane District Harper
Engineer	A.C. Wilbert
Engineer's Registration No.	2534
File No.	Drawing No.
Date	Nov. 19, 1958 Scale 1" = 800'

STATE OF WEST VIRGINIA  
 DEPARTMENT OF MINES  
 OIL AND GAS DIVISION  
 CHARLESTON

WELL LOCATION MAP  
 FILE NO. ROA-1046-A

- + Denotes location of well on United States Topographic Maps, scale 1 to 62,500, latitude and longitude lines being represented by border lines as shown.
- Denotes one inch spaces on border line of original tracing.



STATE OF WEST VIRGINIA  
DEPARTMENT OF MINES  
OIL AND GAS DIVISION

WELL RECORD

632

Paul Walton  
Permit No. 1046-A

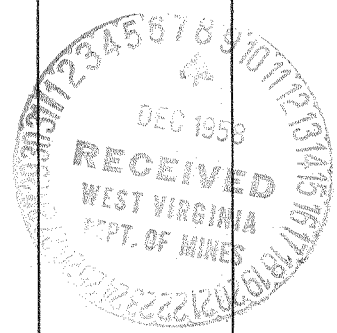
Oil or Gas Well \_\_\_\_\_ (KIND)

Company SOUTH PENN NATURAL GAS COMPANY  
Address P. O. Box 1280, Parkersburg, West Virginia  
Farm J. F. Hersman Acres 252 1/2  
Location (waters) Cabbage Fork of Flat Creek  
Well No. 3 Elev. 1058.84  
District Harpur County Roane  
The surface of tract is owned in fee by G. V. Starcher  
Address Zona, W. Va.  
Mineral rights are owned by John F. White, et al.  
Address Zona, W. Va.  
Drilling commenced Oct. 16, 1907  
Drilling completed Nov. 7, 1907  
Date Shot 11-8-07 From \_\_\_\_\_ To \_\_\_\_\_  
With 30 cts.  
Open Flow /10ths Water in \_\_\_\_\_ Inch  
/10ths Merc. in \_\_\_\_\_ Inch  
Volume \_\_\_\_\_ Cu. Ft.  
Rock Pressure \_\_\_\_\_ lbs. \_\_\_\_\_ hrs.  
Oil 15 bbls., 1st 24 hrs.  
Fresh water 1400 feet  
Salt water \_\_\_\_\_ feet

Casing and Tubing	Used in Drilling	Left in Well	Packers
Size			
16			Kind of Packer
13			No Record
10	842'-9"	None	Size of
8 1/4	1211'-5"	None	
6 5/8	1524'-9"	1524'-9"	Depth set
5 3/16			
3			Perf. top
2			Perf. bottom
Liners Used			Perf. top
			Perf. bottom

CASING CEMENTED \_\_\_\_\_ SIZE \_\_\_\_\_ No. Ft. \_\_\_\_\_ Date \_\_\_\_\_  
COAL WAS ENCOUNTERED AT NONE FEET \_\_\_\_\_ INCHES  
\_\_\_\_\_ FEET \_\_\_\_\_ INCHES FEET \_\_\_\_\_ INCHES  
\_\_\_\_\_ FEET \_\_\_\_\_ INCHES FEET \_\_\_\_\_ INCHES

Formation	Color	Hard or Soft	Top	Bottom	Oil, Gas or Water	Depth Found	Remarks
1st. Sand			90	110			
2nd. Sand			572	662			
3rd. Sand			730	755			
4th. Sand			775	815			
5th. Sand			925	955			
Big Dunkard			1195	1210			
Gas Sand			1400	1475			
Sand			1610	1670	Water	1400	3 Bailers
Salt Sand			1793	1823	Pay	1808	
TOTAL DEPTH				1823			



AUG 2 1961

