

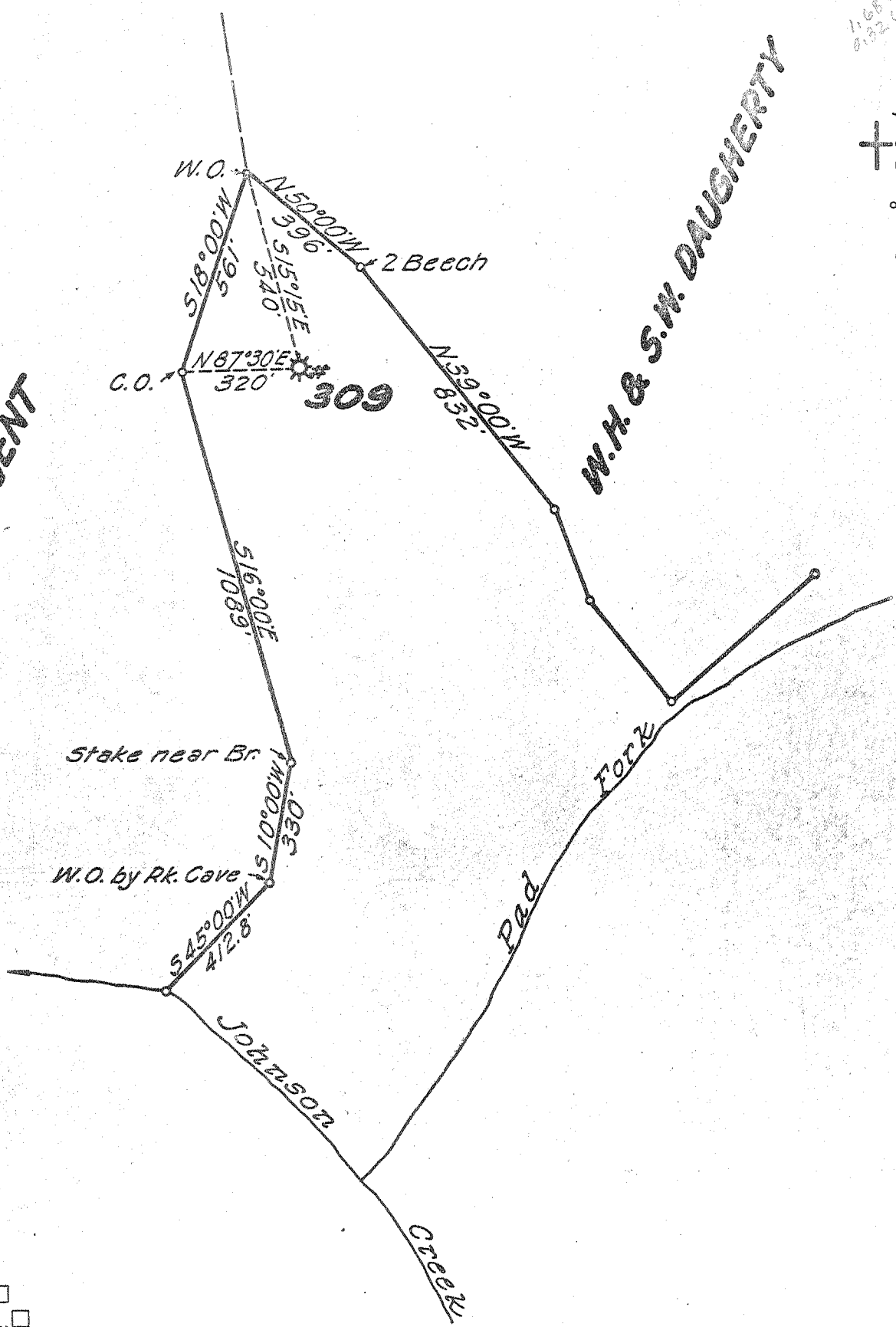
Latitude 38° 40'

1685
032W

Longitude 81° 20'

H. D. SERGENT

W. H. & S. W. DAUGHERTY



New Location ..
 Drill Deeper
 Abandonment

Company UNITED FUEL GAS CO.
 Address CHARLESTON, W. VA.
 Farm H. L. HELPER
 Tract _____ Acres 100 Lease No. 1909
 Well (Farm) No. _____ Serial No. 309
 Elevation (Spirit Level) 900.
 Quadrangle WALTON
 County ROANE District WALTON
 Engineer Hubert R. Howell
 Engineer's Registration No. 2529
 File No. 76-79 Drawing No. _____
 Date 5-16-57 Scale 1"=400'

STATE OF WEST VIRGINIA
 DEPARTMENT OF MINES
 OIL AND GAS DIVISION
 CHARLESTON

WELL LOCATION MAP
 FILE NO. ROA-1018-A

+ Denotes location of well on United States Topographic Maps, scale 1 to 62,500, latitude and longitude lines being represented by border lines as shown.

- Denotes one inch spaces on border line of original tracing.

Roane 1018A
70150

Walton District, Roane County, W. Va.

The Ohio Fuel Oil Co.

Rig commenced Aug. 14, 1910, and completed Aug. 23, 1910.

Drilling commenced Dec. 16, 1910, and completed, Feb. 4, 1911.

Contractor, Pratt Drilling Co., Charleston, W. Va.

Drillers, T. K. Tompson and H. O. Foreman.

Conductor, 16'.

Threads 6-5/8", 15' 2".

This well came in gas and was turned over to the United Fuel Gas Co.
who furnished tubing, packer, etc.

Examined and approved by E. H. Lange, Foreman.

Copied from Record Books of The Ohio Fuel Oil Co. by C. E. Krebs,
Nov. 10, 1911.

	Top.	Bottom.	Thickness.
Conductor	0	- 16	16
Sand	70	- 180	110
Red rock and slate	240	- 295	55
Slate and red lime	295	- 665	370
Little Dunkard Sand	665	- 720	55
Slate	720	- 740	20
Big Dunkard Sand	740	- 850	110
Salt Sand (little water, 1490'; big water, 1520')	1440		
Break	1650	- 1655	5
Little Lime	1771		
Pencil Cave	1800		
Big Lime (gas, 1940')	1927	- 1980	63
Total depth		1981	



VFW

STATE OF WEST VIRGINIA
DEPARTMENT OF MINES
OIL AND GAS DIVISION

WELL RECORD

Oil or Gas Well Gas
(KIND)

Quadrangle Walton

Permit No. 1018-A

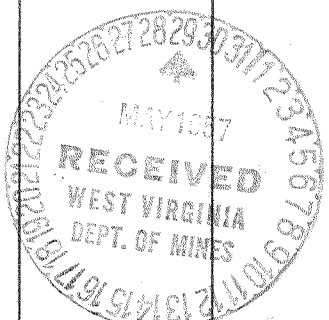
Company United Fuel Gas Co.
Address P.O. Box 1273; Charleston 25, W. Va.
Farm H. L. Helper Acres 100
Location (waters) Rad Fork
Well No. 309 Elev. 900
District Walton County Roane
The surface of tract is owned in fee by _____
Address _____
Mineral rights are owned by Herbert Daugherty, et al
Address Walton, W. Va.
Drilling commenced Dec. 16, 1910
Drilling completed Feb. 4, 1911
Date Shot _____ From _____ To _____
With _____

Casing and Tubing	Used in Drilling	Left in Well	Packers
Size			
16			Kind of Packer
13			
10	295		Size of
8 1/4	810		
6 5/8	1820	1820	Depth set
5 3/16			
3		1993	Perf. top
2			Perf. bottom
Liners Used			Perf. top
			Perf. bottom

Open Flow _____ /10ths Water in _____ Inch
_____ /10ths Merc. in _____ Inch
Volume 6,500,000 Cu. Ft.
Rock Pressure _____ lbs. _____ hrs.
Oil _____ bbls., 1st 24 hrs.
Fresh water _____ feet _____ feet
Salt water _____ feet _____ feet

CASING CEMENTED _____ SIZE _____ No. Ft. _____ Date _____
COAL WAS ENCOUNTERED AT _____ FEET _____ INCHES
_____ FEET _____ INCHES _____ FEET _____ INCHES
_____ FEET _____ INCHES _____ FEET _____ INCHES

Formation	Color	Hard or Soft	Top	Bottom	Oil, Gas or Water	Depth Found	Remarks
Sand			70	180	Tubing, packer, fittings, etc. furnished by U.F.G. Co. who had charge of well as soon as tubed.		
Red Rock & Slate			240	295			
Slate & Red Lime			295	665			
Little Dunkard			665	720			
Slate			720	740			
Big Dunkard			740	850			
Salt Sand			1440				
Little Water			1490				
Big Water			1520				
Break			1650	1655			
Top Little Lime			1771				
Top Pencil Cave			1800				
Top Big Lime			1812				
Top Big Injun			1927				
Gas			1940				
Bottom Sand			1980				
Bottom Hole			1981				



DEC 6 1957

