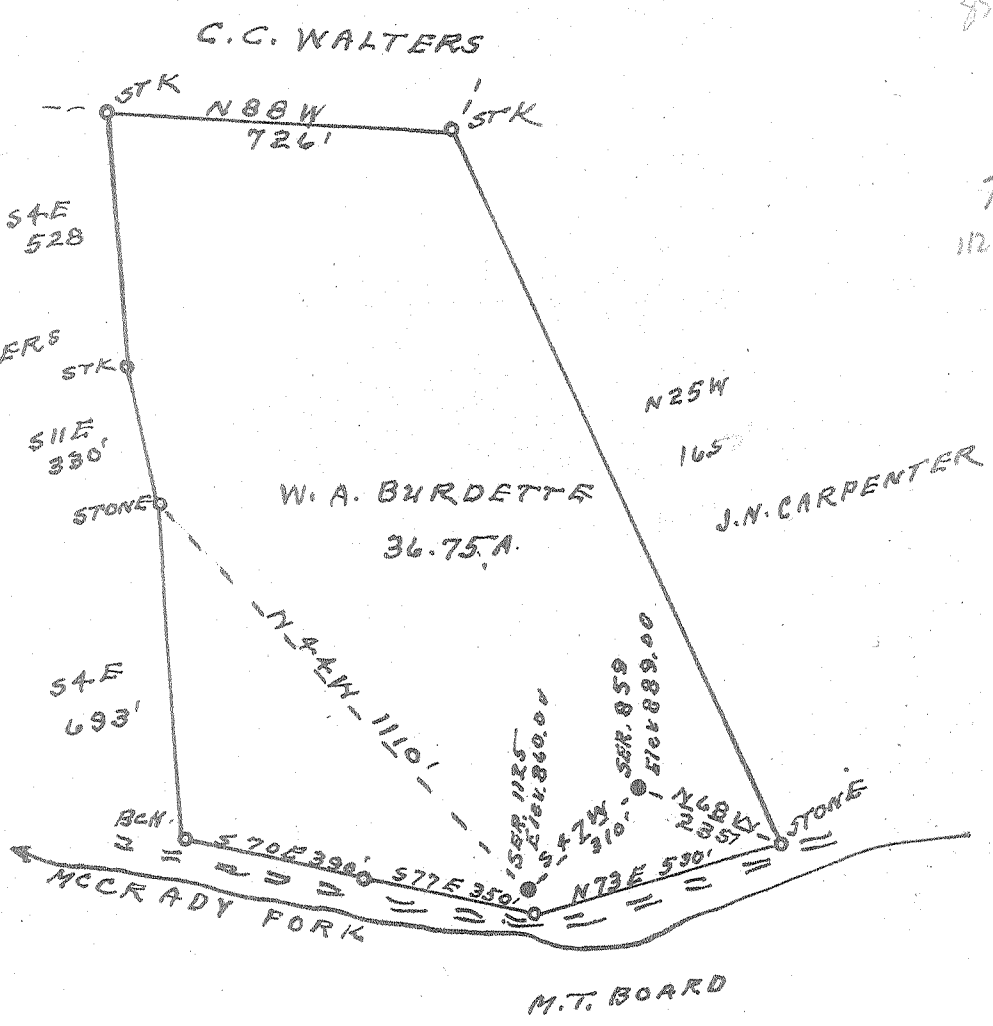


Latitude 38° 50'

Longitude 81° 30'



859 2.435  
 0.40 W  
 ---  
 1125 2.505  
 0.47 W

New Location..   
 Drill Deeper.....   
 Abandonment.....

Company CECIL RAINES ET AL  
 Address GANDEEVILLE, W.VA.  
 Farm W. A. BURDETTE  
 Tract \_\_\_\_\_ Acres 36.75 Lease No. \_\_\_\_\_  
 Well (Farm) No. \_\_\_\_\_ Serial No. SEE ABOVE  
 Elevation (Spirit Level) SEE ABOVE  
 Quadrangle RIPLEY  
 County ROANE District CURTIS  
 Engineer L. F. Dye  
 Engineer's Registration No. 804  
 File No. \_\_\_\_\_ Drawing No. \_\_\_\_\_  
 Date 1-29-57 Scale 1" = 400'

STATE OF WEST VIRGINIA  
 DEPARTMENT OF MINES  
 OIL AND GAS DIVISION  
 CHARLESTON

WELL LOCATION MAP  
 FILE NO. ROA-1011-A-#859  
ROA-1012-A-#1125

+ Denotes location of well on United States Topographic Maps, scale 1 to 62,500, latitude and longitude lines being represented by border lines as shown.  
 - Denotes one inch spaces on border line of original tracing.



STATE OF WEST VIRGINIA  
DEPARTMENT OF MINES  
OIL AND GAS DIVISION

576

Quadrangle Ripley  
Permit No. Comp. Dec 22, 1920

WELL RECORD

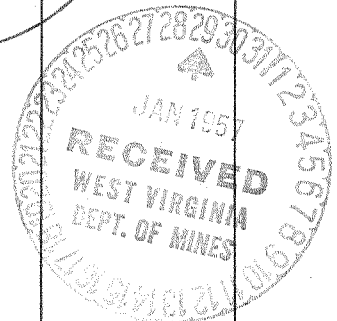
Oil or Gas Well Oil  
(KIND)

Company Cecil Raines et al.  
 Address Gandeeville, West Virginia.  
 Farm W. A. Burdette Acres 36 3/4  
 Location (waters) Mc Crady Fork (Frozen Camp)  
 Well No. 359.1 Ser. 1125 Elev. 860  
 District Curtis County Roane  
 The surface of tract is owned in fee by W. A. Burdette  
 Address \_\_\_\_\_  
 Mineral rights are owned by W. A. Burdette  
 Address \_\_\_\_\_  
 Drilling commenced Dec. 7, 1920  
 Drilling completed Dec. 22, 1920  
 Date Shot Dec. 24, 1920 From \_\_\_\_\_ To \_\_\_\_\_  
 With 30 Quarts Glycerine  
 Open Flow \_\_\_\_\_ /10ths Water in \_\_\_\_\_ Inch  
 \_\_\_\_\_ /10ths Merc. in \_\_\_\_\_ Inch  
 Volume \_\_\_\_\_ Cu. Ft.  
 Rock Pressure \_\_\_\_\_ lbs. \_\_\_\_\_ hrs.  
 Oil Unknown \_\_\_\_\_ bbls., 1st 24 hrs.  
 Fresh water \_\_\_\_\_ feet \_\_\_\_\_ feet  
 Salt water \_\_\_\_\_ feet \_\_\_\_\_ feet

Casing and Tubing	Used in Drilling	Left in Well	Packers
Size			Kind of Packer
16			
13			
10			Size of
8 1/4	700	Pulled	
6 5/8	870	870	Depth set
5 3/16			
3			Perf. top
2	935	935	Perf. bottom
Liners Used			Perf. top
			Perf. bottom

CASING CEMENTED None SIZE \_\_\_\_\_ No. Ft. \_\_\_\_\_ Date \_\_\_\_\_  
 COAL WAS ENCOUNTERED AT None FEET \_\_\_\_\_ INCHES  
 \_\_\_\_\_ FEET \_\_\_\_\_ INCHES FEET \_\_\_\_\_ INCHES  
 \_\_\_\_\_ FEET \_\_\_\_\_ INCHES FEET \_\_\_\_\_ INCHES

Formation	Color	Hard or Soft	Top	Bottom	Oil, Gas or Water	Depth Found	Remarks
Red Rock			0	83			
Slate			83	125			
Red Rock			125	160			
Sand			160	190			
Slate			190	225			
Red Rock			225	300			
Sand			300	330			
Slate			330	400			
Red Rock			400	445			
Pitts. Sand			445	530			
Slate			530	540			
Sand			540	565			
Slate			565	630			
Sand			630	655			
Slate			655	670			
Red Rock			670	678			
Slate			678	685			
Shell			685	690			
Red Rock			690	710			
Shell			710	715			
Red Rock			715	775			
Slate			775	825			
Red Rock			825	850			
Slate			850	865			
Shell			865	870			
Slate			870	915			
Cow Run Sand			915	935			
Total Depth			935				



~~011 917 to 927~~  
011 917 to 927

