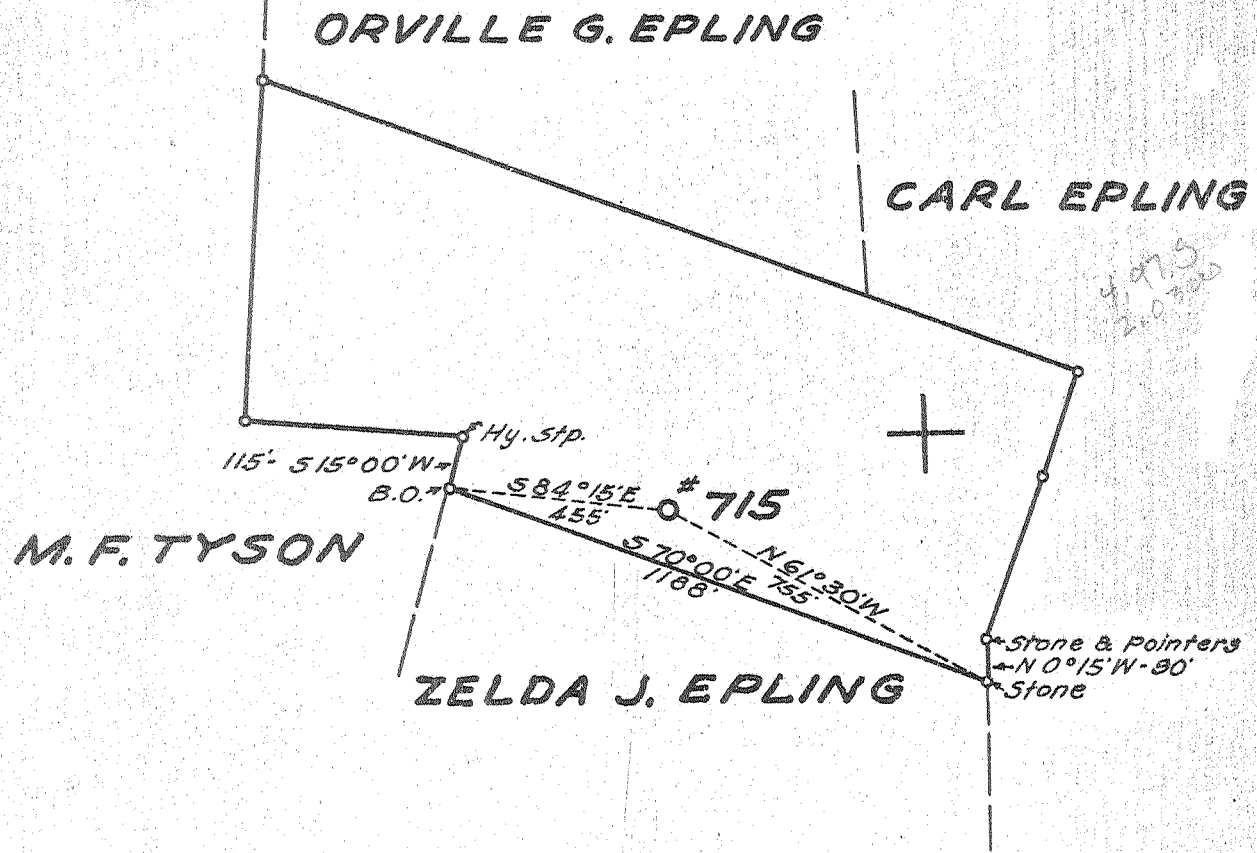


Latitude 38° 55'

Longitude 81° 15'



New Location...

Drill Deeper.....

Abandonment.....

Company UNITED FUEL GAS CO.

Address CHARLESTON, W.VA.

Farm I.N. & ZELDA J. EPLING

Tract \_\_\_\_\_ Acres 26 Lease No. 6418

Well (Farm) No. \_\_\_\_\_ Serial No. 715

Elevation (Spirit Level) 956.1

Quadrangle SPENCER

County ROANE District SPENCER

Engineer Sybert & Truell

Engineer's Registration No. 2529

File No. 80-93 Drawing No. \_\_\_\_\_

Date 6-12-56 Scale 1" = 400'

STATE OF WEST VIRGINIA  
DEPARTMENT OF MINES  
OIL AND GAS DIVISION  
CHARLESTON

WELL LOCATION MAP  
FILE NO. ROA-999-A

+ Denotes location of well on United States Topographic Maps, scale 1 to 62,500, latitude and longitude lines being represented by border lines as shown.

- Denotes one inch spaces on border line of original tracing.



534

STATE OF WEST VIRGINIA  
DEPARTMENT OF MINES  
OIL AND GAS DIVISION

Quadrangle Spencer

WELL RECORD

Permit No. 99-A

Oil or Gas Well Gas  
(KIND)

Company UNITED FUEL GAS COMPANY  
Address P.O. Box 1273, Charleston 25, W. Va.  
Farm I. N. & Z. J. Epling Acres 26  
Location (waters) Little Creek  
Well No. 715 Elev. 956.1'  
District Spencer County Roane  
The surface of tract is owned in fee by \_\_\_\_\_  
Address \_\_\_\_\_  
Mineral rights are owned by Nettie M. Starr  
First National Bank Address Spencer, W.Va.  
Drilling commenced 11-5-15  
Drilling completed 12-1915  
Date Shot \_\_\_\_\_ From \_\_\_\_\_ To \_\_\_\_\_  
With \_\_\_\_\_  
Open Flow 52 /10ths Water in \_\_\_\_\_ 2 Inch  
\_\_\_\_\_ /10ths Merc. in \_\_\_\_\_ Inch  
Volume 338,000 Cu. Ft.  
Rock Pressure 565 lbs. 60 hrs.  
Oil \_\_\_\_\_ bbls., 1st 24 hrs.  
Fresh water \_\_\_\_\_ feet \_\_\_\_\_ feet  
Salt water 1760 feet \_\_\_\_\_ feet

Casing and Tubing	Used in Drilling	Left in Well	Packers
Size			Kind of Packer
16			<u>Parmaco</u>
13			Size of
10	<u>685'</u>		<u>5-3/16"x3"</u>
8 1/4	<u>1085'</u>		Depth set
6 5/8		<u>1963'6"</u>	<u>2018'</u>
5 3/16			Perf. top
3			Perf. bottom
2		<u>2175'10"</u>	Perf. top
Liners Used			Perf. bottom

CASING CEMENTED \_\_\_\_\_ SIZE \_\_\_\_\_ No. Ft. \_\_\_\_\_ Date \_\_\_\_\_

COAL WAS ENCOUNTERED AT \_\_\_\_\_ FEET \_\_\_\_\_ INCHES  
\_\_\_\_\_ FEET \_\_\_\_\_ INCHES \_\_\_\_\_ FEET \_\_\_\_\_ INCHES  
\_\_\_\_\_ FEET \_\_\_\_\_ INCHES \_\_\_\_\_ FEET \_\_\_\_\_ INCHES

Formation	Color	Hard or Soft	Top	Bottom	Oil, Gas or Water	Depth Found	Remarks
Sand			12	40	Water at 1760' Gas 2063', 2070', 2088', 2120'		
Red Rock			40	150			
Sand			150	200			
Red Rock			200	575			
Sand			575	640			
Slate			640	660			
Slate Sand			660-700	700			
Red Rock			700	825			
Slate Sand			825	1000			
Little Dunkard			1000	1025			
Slate			1025	1085			
Big Dunkard			1085	1180			
Slate			1180	1220			
Sand			1220	1500			
Slate			1500	1700			
Salt Sand			1700	1860			
Little Lime			1860	1880			
White Sand			1880	1900			
Little Lime			1900	1938			
Pencil Cave			1938	1944			
Big Lime			1944	2062			
Big Injun			2062	2122			
Total depth			2163'				

