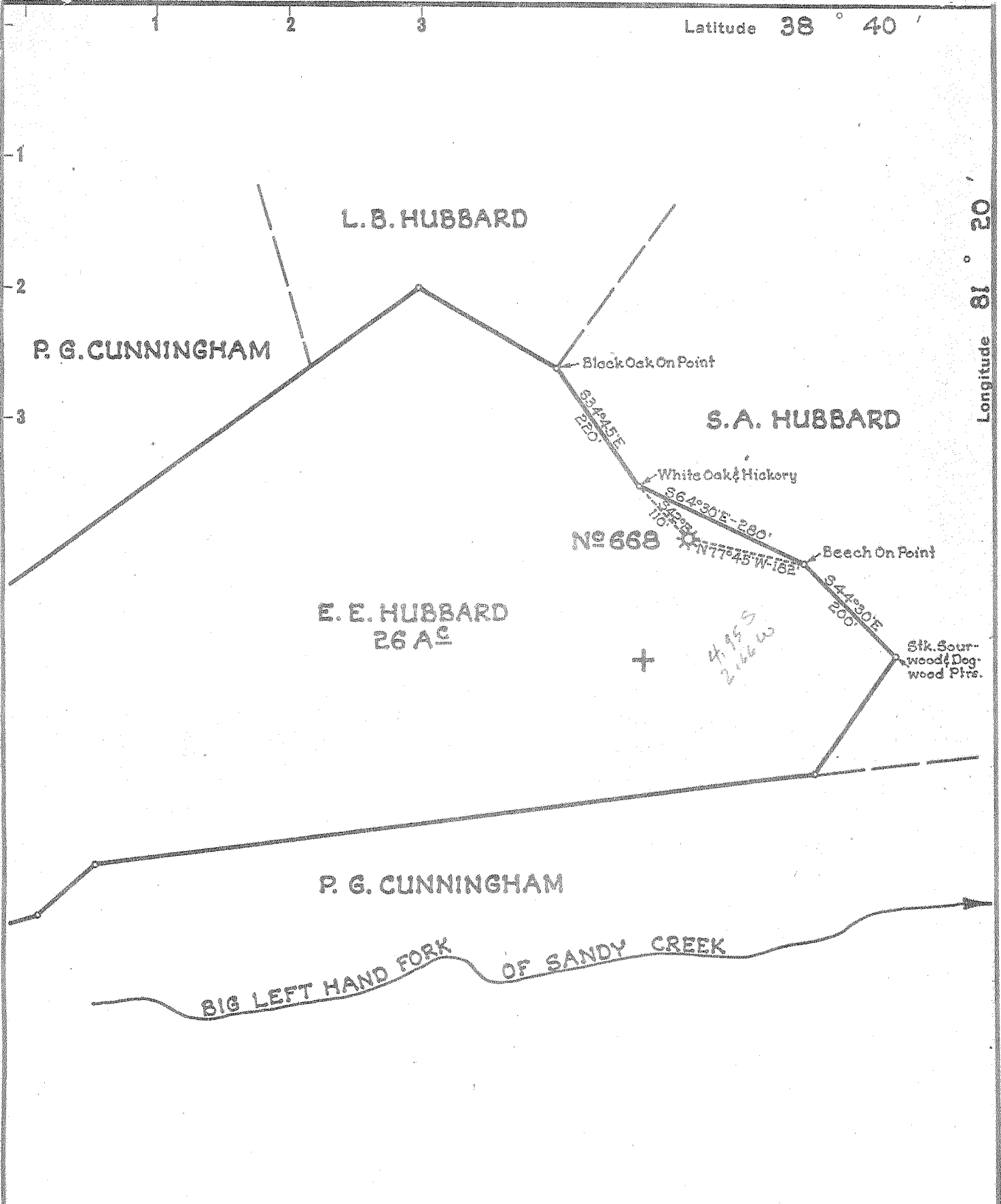


Latitude 38° 40'

Longitude 81° 20'



New Location...
 Drill Deeper.....
 Abandonment.....

Company	UNITED FUEL GAS CO.
Address	CHARLESTON, W.VA.
Farm	E. E. HUBBARD
Tract	Acres 26 Lease No. 6557
Well (Farm) No.	Serial No. 668
Elevation (Spirit Level)	895.0'
Quadrangle	WALTON
County	ROANE District WALTON
Engineer	<i>Robert R. Shull</i>
Engineer's Registration No.	2529
File No.	74-75 Drawing No.
Date	8-11-55 Scale 1"=200'

STATE OF WEST VIRGINIA
 DEPARTMENT OF MINES
 OIL AND GAS DIVISION
 CHARLESTON

WELL LOCATION MAP
 FILE NO. ROA-977-A

+ Denotes location of well on United States Topographic Maps, scale 1 to 62,500, latitude and longitude lines being represented by border lines as shown.

- Denotes one inch spaces on border line of original tracing.



STATE OF WEST VIRGINIA
DEPARTMENT OF MINES
OIL AND GAS DIVISION

577

Quadrangle Walton
Permit No. 777

WELL RECORD

Oil or Gas Well Gas
(KIND)

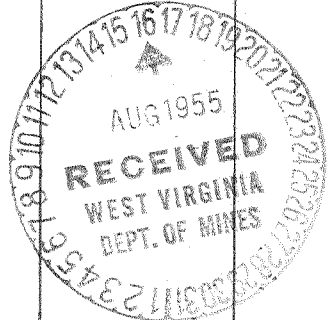
Company UNITED FUEL GAS CO.
 Address P.O. Box 1273, Charleston 25, W. Va.
 Farm E. E. & C. O. Hubbard Acres 26
 Location (waters) Sandy Creek
 Well No. 668 Elev. 895'
 District Walton County Roane
 The surface of tract is owned in fee by _____
 Address _____
 Mineral rights are owned by Howard E. Hubbard, et al
 Address Walton, W. Va.
 Drilling commenced 3-17-15
 Drilling completed 4-28-15
 Date Shot _____ From _____ To _____
 With _____
 Open Flow 6 /10ths Water in _____ Inch
 _____ /10ths Merc. in 3 Inch
 Volume 3,062,000 Cu. Ft.
 Rock Pressure 360 lbs. 48 hrs.
 Oil _____ bbls., 1st 24 hrs.
 Fresh water 75 feet _____ feet
1368' feet 1388' feet
 Salt water _____ feet _____ feet

Casing and Tubing	Used in Drilling	Left in Well	Packers
Size			
16		16'	Kind of Packer
13			<u>Anchor</u>
10			Size of
8 3/4	580'		<u>3x6-5/8x16</u>
6%		1775'1"	Depth set
5 3/16			<u>1856</u>
3		1987'11"	Perf. top
2			Perf. bottom
Liners Used			Perf. top
			Perf. bottom

CASING CEMENTED _____ SIZE _____ No. Ft. _____ Date _____

COAL WAS ENCOUNTERED AT _____ FEET _____ INCHES
 _____ FEET _____ INCHES _____ FEET _____ INCHES
 _____ FEET _____ INCHES _____ FEET _____ INCHES

Formation	Color	Hard or Soft	Top	Bottom	Oil, Gas or Water	Depth Found	Remarks
Conductor				16			
Mountain Sand			11	135			
Red Rock			135	250			
White Slate			250	402			
Lime			402	412			
Red Rock			412	440			
Sand			440	495			
White Slate			495	570			
Dunkard Sand			570	780			
Slate & Shells			780	960			
Lime			960	975			
Slate			975	1060			
Sand			1060	1120			
Black Slate			1120	1170			
Sand			1170	1220			
Black Slate			1220	1310			
Salt Sand			1310	1568			
Slate			1568	1572			
2nd Salt Sand			1572	1624			
Black Slate			1624	1626			
Maxon Sand			1626	1707			
Little Lime			1707	1741			
Pencil Cave			1741	1747			
Big Lime			1747	1879			
Big Injun			1879	1920			
Slate			1920	1978			
Total depth			1978'				



Small show of gas 1847'
Gas 1881-1893'
Gas 1914' - 1920'

OCT 6 1955

